



## DRILL STEM TEST REPORT

Prepared For: **F.G.Holl Company L.L.C.**

9431 East Central Suite 100  
Wichita, Kansas 67206-2563

ATTN: Rene Husted

**Bell "A" #1-7**

**7-30s-13w Barber**

Start Date: 2012.02.13 @ 02:15:00

End Date: 2012.02.13 @ 00:00:00

Job Ticket #: 15863                      DST #: 5

Superior Testers Enterprises LLC  
PO Box 138 Great Bend KS 67530  
1-800-792-6902

Printed: 2012.02.13 @ 07:48:27



# DRILL STEM TEST REPORT

F.G.Holl Company L.L.C.

**7-30s-13w Barber**

9431 East Central Suite 100  
Wichita, Kansas 67206-2563

**Bell "A" #1-7**

Job Ticket: 15863

**DST#: 5**

ATTN: Rene Husted

Test Start: 2012.02.13 @ 02:15:00

## GENERAL INFORMATION:

Formation: **Viola**

Deviated: No Whipstock: ft (KB)

Time Tool Opened: 00:00:00

Time Test Ended: 00:00:00

Test Type: Conventional Bottom Hole (Initial)

Tester: Gene Budig

Unit No: 3335-52

**Interval: 4523.00 ft (KB) To 4573.00 ft (KB) (TVD)**

Reference Elevations: 1855.00 ft (KB)

Total Depth: 4573.00 ft (KB) (TVD)

1842.00 ft (CF)

Hole Diameter: 7.88 inches Hole Condition: Fair

KB to GR/CF: 13.00 ft

**Serial #: 8405 Outside**

Press @ Run Depth: 336.21 psig @ 4569.98 ft (KB)

Capacity: 5000.00 psig

Start Date: 2012.02.13

End Date: 2012.02.13

Last Calib.: 2012.02.13

Start Time: 02:30:00

End Time: 09:49:30

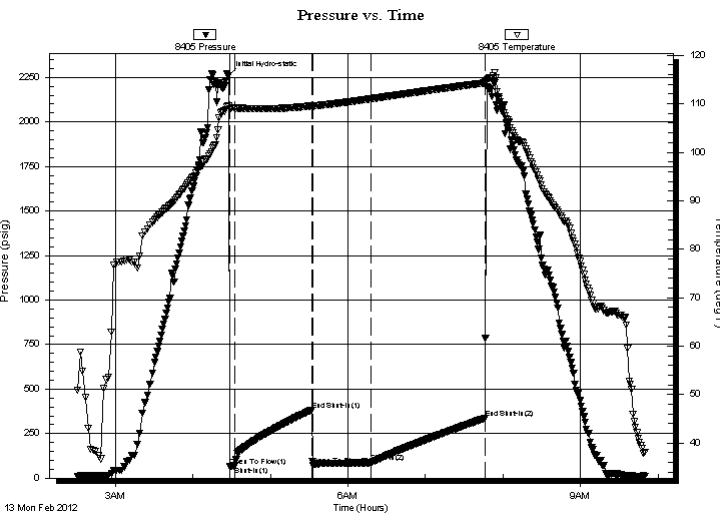
Time On Btm: 2012.02.13 @ 04:27:30

Time Off Btm:

**TEST COMMENT:** 1st Opening 05 Minutes Fair blow built to the bottom of a 5 gallon bucket in 3 minutes

1st Shut-In 60 Minutes-No blow back

2nd Opening 45 Minutes-Good blow built to the bottom of a 5 gallon bucket in 1 minute and decreased to a 2 1/2 inch blow



## PRESSURE SUMMARY

Time (Min.)	Pressure (psig)	Temp (deg F)	Annotation
0	2260.77	109.50	Initial Hydro-static
1	66.48	109.04	Open To Flow (1)
5	68.77	109.11	Shut-In(1)
65	383.20	109.56	End Shut-In(1)
66	71.05	109.51	Open To Flow (2)
111	86.79	111.03	Shut-In(2)
199	336.21	114.30	End Shut-In(2)

## Recovery

Length (ft)	Description	Volume (bbl)
420.00	gas in the pipe	4.25
70.00	oil cut mud	0.98
0.00	10% Gas 10% Oil 80%Mud	0.00

## Gas Rates

	Choke (inches)	Pressure (psig)	Gas Rate (Mcf/d)



# DRILL STEM TEST REPORT

F.G.Holl Company L.L.C.

**7-30s-13w Barber**

9431 East Central Suite 100  
Wichita, Kansas 67206-2563

**Bell "A" #1-7**

Job Ticket: 15863

**DST#: 5**

ATTN: Rene Husted

Test Start: 2012.02.13 @ 02:15:00

## GENERAL INFORMATION:

Formation: **Viola**

Deviated: No Whipstock: ft (KB)

Time Tool Opened: 00:00:00

Time Test Ended: 00:00:00

Test Type: Conventional Bottom Hole (Initial)

Tester: Gene Budig

Unit No: 3335-52

**Interval: 4523.00 ft (KB) To 4573.00 ft (KB) (TVD)**

Reference Elevations: 1855.00 ft (KB)

Total Depth: 4573.00 ft (KB) (TVD)

1842.00 ft (CF)

Hole Diameter: 7.88 inches Hole Condition: Fair

KB to GR/CF: 13.00 ft

**Serial #: 8400 Inside**

Press @ Run Depth: 337.65 psig @ 4568.98 ft (KB)

Capacity: 5000.00 psig

Start Date: 2012.02.13

End Date: 2012.02.13

Last Calib.: 1899.12.30

Start Time: 02:30:00

End Time: 09:55:30

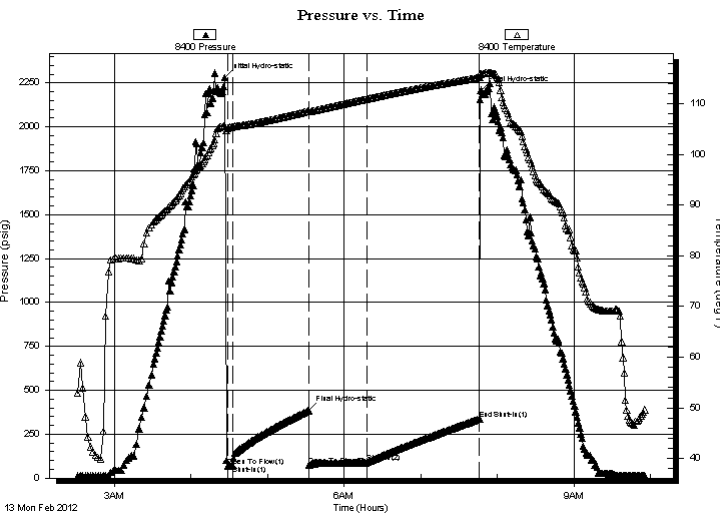
Time On Btm: 2012.02.13 @ 04:26:30

Time Off Btm: 2012.02.13 @ 05:32:00

**TEST COMMENT:** 1st Opening 05 Minutes Fair blow built to the bottom of a 5 gallon bucket in 3 minutes

1st Shut-In 60 Minutes-No blow back

2nd Opening 45 Minutes-Good blow built to the bottom of a 5 gallon bucket in 1 minute and decreased to a 2 1/2 inch blow



## PRESSURE SUMMARY

Time (Min.)	Pressure (psig)	Temp (deg F)	Annotation
0	2279.17	105.62	Initial Hydro-static
2	67.78	105.20	Open To Flow (1)
6	71.35	105.43	Shut-In(1)
66	384.23	108.53	Final Hydro-static
66	75.29	108.40	Open To Flow (2)
112	88.71	110.94	Shut-In(2)
200	337.65	115.15	End Shut-In(1)
201	2206.27	115.79	Final Hydro-static

## Recovery

Length (ft)	Description	Volume (bbl)
420.00	gas in the pipe	4.25
70.00	oil cut mud	0.98
0.00	10% Gas 10% Oil 80%Mud	0.00

## Gas Rates

	Choke (inches)	Pressure (psig)	Gas Rate (Mcf/d)



# DRILL STEM TEST REPORT

**TOOL DIAGRAM**

F.G.Holl Company L.L.C.

**7-30s-13w Barber**

9431 East Central Suite 100  
Wichita, Kansas 67206-2563

**Bell "A" #1-7**

Job Ticket: 15863

**DST#: 5**

ATTN: Rene Husted

Test Start: 2012.02.13 @ 02:15:00

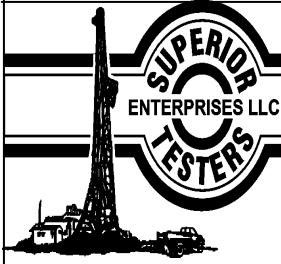
## Tool Information

Drill Pipe:	Length: 4340.00 ft	Diameter: 3.80 inches	Volume: 60.88 bbl	Tool Weight: 2000.00 lb
Heavy Wt. Pipe:	Length: ft	Diameter: inches	Volume: - bbl	Weight set on Packer: 20000.00 lb
Drill Collar:	Length: 180.00 ft	Diameter: 2.25 inches	Volume: 0.89 bbl	Weight to Pull Loose: 75000.00 lb
			<u>Total Volume: - bbl</u>	Tool Chased 0.00 ft
Drill Pipe Above KB:	25.00 ft			String Weight: Initial 65000.00 lb
Depth to Top Packer:	4523.00 ft			Final 65000.00 lb
Depth to Bottom Packer:	ft			
Interval between Packers:	49.98 ft			
Tool Length:	77.98 ft			
Number of Packers:	2	Diameter: 6.75 inches		

Tool Comments:

Tool Description	Length (ft)	Serial No.	Position	Depth (ft)	Accum. Lengths
Shut-In Tool	5.00			4500.00	
Hydraulic Tool	5.00			4505.00	
Jars	6.00			4511.00	
Safety Joint	2.00			4513.00	
Packer	5.00			4518.00	28.00 Bottom Of Top Packer
Packer	5.00			4523.00	
Anchor	5.00			4528.00	
Change Over Sub	0.75			4528.75	
Drill Pipe	31.48			4560.23	
Change Over Sub	0.75			4560.98	
Anchor	7.00			4567.98	
Recorder	1.00	8400	Inside	4568.98	
Recorder	1.00	8405	Outside	4569.98	
Bull Plug	3.00			4572.98	49.98 Bottom Packers & Anchor

**Total Tool Length: 77.98**



# DRILL STEM TEST REPORT

**FLUID SUMMARY**

F.G.Holl Company L.L.C.

**7-30s-13w Barber**

9431 East Central Suite 100  
Wichita, Kansas 67206-2563

**Bell "A" #1-7**

Job Ticket: 15863

**DST#: 5**

ATTN: Rene Husted

Test Start: 2012.02.13 @ 02:15:00

## Mud and Cushion Information

Mud Type: Gel Chem  
Mud Weight: 9.00 lb/gal  
Viscosity: 49.00 sec/qt  
Water Loss: 8.80 in<sup>3</sup>  
Resistivity: ohm.m  
Salinity: 4000.00 ppm  
Filter Cake: 1.00 inches

Cushion Type:  
Cushion Length: ft  
Cushion Volume: bbl  
Gas Cushion Type:  
Gas Cushion Pressure: psig  
Oil API: deg API  
Water Salinity: ppm

## Recovery Information

Recovery Table

Length ft	Description	Volume bbl
420.00	gas in the pipe	4.252
70.00	oil cut mud	0.982
0.00	10% Gas 10% Oil 80%Mud	0.000

Total Length: 490.00 ft      Total Volume: 5.234 bbl

Num Fluid Samples: 0

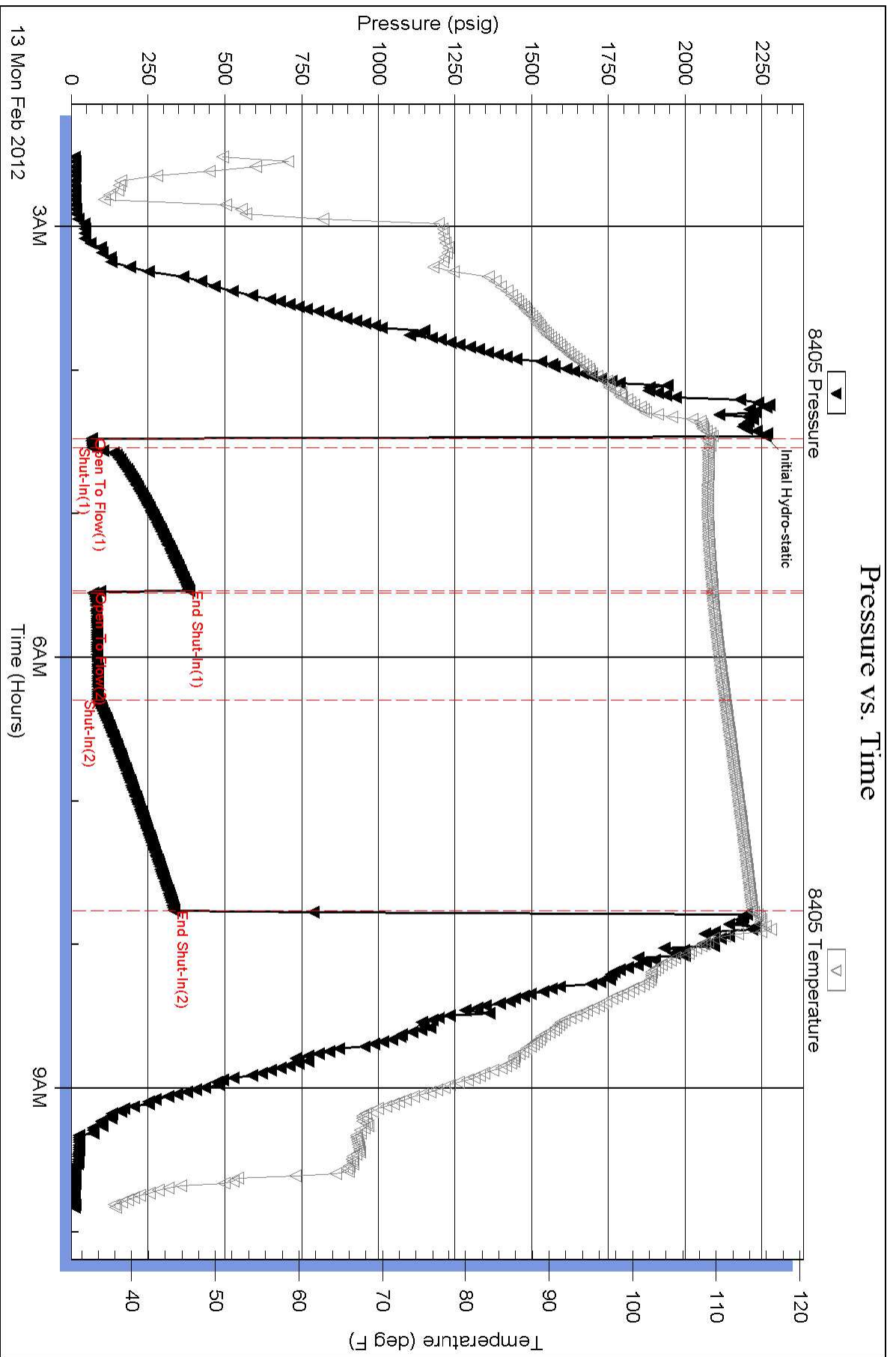
Num Gas Bombs: 0

Serial #:

Laboratory Name:

Laboratory Location:

Recovery Comments:



### Pressure vs. Time

