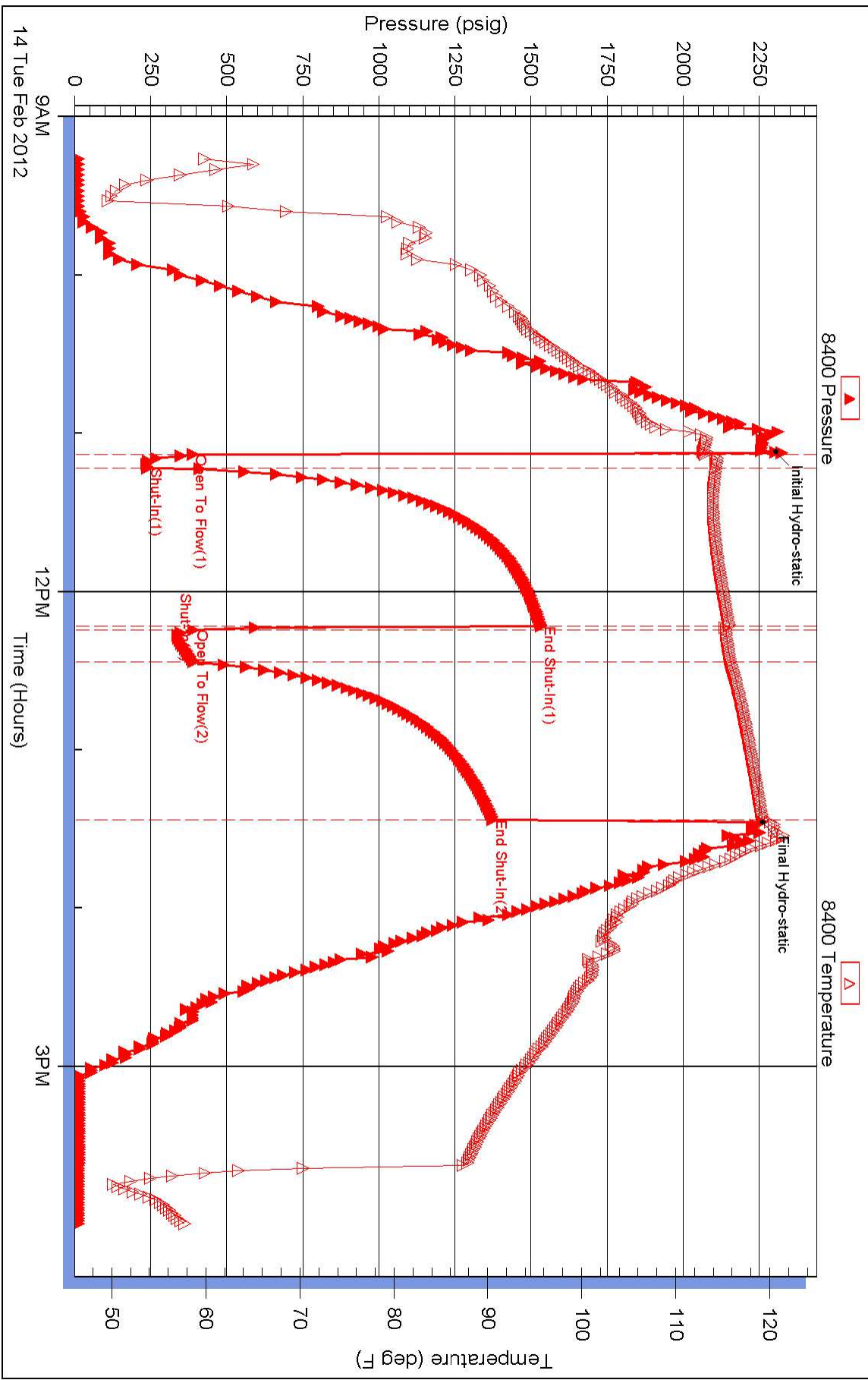
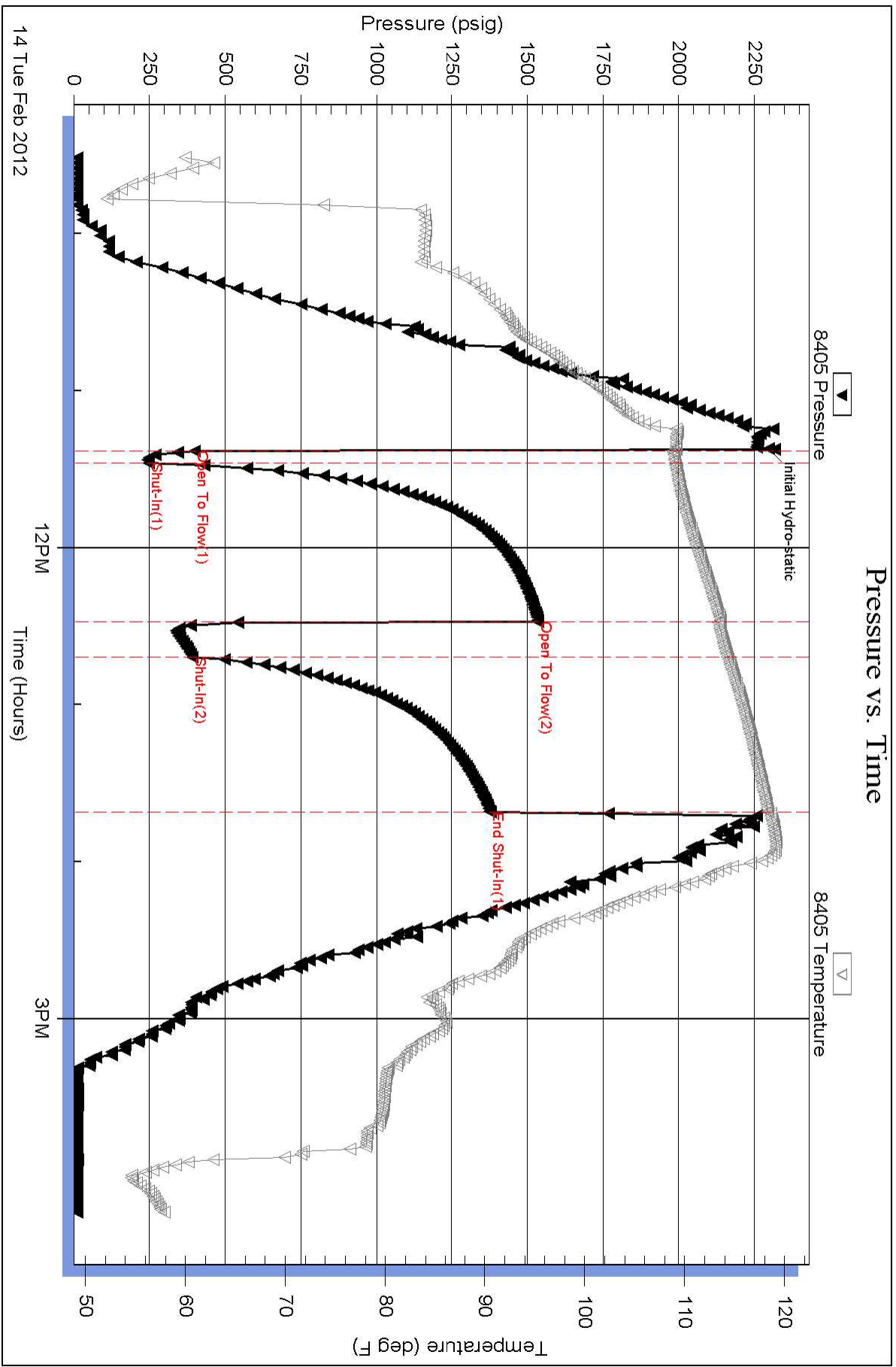


Pressure vs. Time







DRILL STEM TEST REPORT

FLUID SUMMARY

F.G.Holl Company L.L.C.

7-30s-13w Barber

9431 East Central Suite 100
Wichita, Kansas 67206-2563

Bell "A" #1-7

Job Ticket: 15865

DST#: 7

ATTN: Rene Husted

Test Start: 2012.02.14 @ 09:45:00

Mud and Cushion Information

Mud Type: Gel Chem
Mud Weight: 9.00 lb/gal
Viscosity: 52.00 sec/qt
Water Loss: 8.80 in³
Resistivity: ohm.m
Salinity: 8.80 ppm
Filter Cake: 1.00 inches

Cushion Type:
Cushion Length: ft
Cushion Volume: bbl
Gas Cushion Type:
Gas Cushion Pressure: psig

Oil API: deg API
Water Salinity: ppm

Recovery Information

Recovery Table

Length ft	Description	Volume bbl
0.00	180 Gas in the pipe	0.000
100.00	Very Slightly Oil cut Muddy Water	0.492
0.00	1%Oil 30%Mud 69%Water	0.000
120.00	Slightly Muddy Water with a trace of oil	0.955
0.00	Trace of Oil 8%Mud 92%Water	0.000
120.00	Slightly muddy water with a trace of oil	1.683
0.00	TRACE OF OIL 4% mUD 96%Water	0.000
360.00	Water Chlorides 48000	5.050
0.00	Resistivity .15@ 58 Degrees	0.000

Total Length: 700.00 ft Total Volume: 8.180 bbl

Num Fluid Samples: 0 Num Gas Bombs: 0 Serial #:

Laboratory Name: Laboratory Location:

Recovery Comments:



DRILL STEM TEST REPORT

TOOL DIAGRAM

F.G.Holl Company L.L.C.

7-30s-13w Barber

9431 East Central Suite 100
Wichita, Kansas 67206-2563

Bell "A" #1-7

Job Ticket: 15865

DST#: 7

ATTN: Rene Husted

Test Start: 2012.02.14 @ 09:45:00

Tool Information

Drill Pipe:	Length: 4491.00 ft	Diameter: 3.80 inches	Volume: 63.00 bbl	Tool Weight: 2000.00 lb
Heavy Wt. Pipe:	Length: ft	Diameter: inches	Volume: - bbl	Weight set on Packer: 20000.00 lb
Drill Collar:	Length: 180.00 ft	Diameter: 2.25 inches	Volume: 0.89 bbl	Weight to Pull Loose: 80000.00 lb
			<u>Total Volume: - bbl</u>	Tool Chased 0.00 ft
Drill Pipe Above KB:	25.00 ft			String Weight: Initial 72000.00 lb
Depth to Top Packer:	4674.00 ft			Final 74000.00 lb
Depth to Bottom Packer:	ft			
Interval between Packers:	21.00 ft			
Tool Length:	49.00 ft			
Number of Packers:	2	Diameter: 6.75 inches		

Tool Comments:

Tool Description	Length (ft)	Serial No.	Position	Depth (ft)	Accum. Lengths
Shut-In Tool	5.00			4651.00	
Hydraulic Tool	5.00			4656.00	
Jars	6.00			4662.00	
Safety Joint	2.00			4664.00	
Packer	5.00			4669.00	28.00 Bottom Of Top Packer
Packer	5.00			4674.00	
Anchor	16.00			4690.00	
Recorder	1.00	8400	Inside	4691.00	
Recorder	1.00	8405	Outside	4692.00	
Bull Plug	3.00			4695.00	21.00 Bottom Packers & Anchor
Total Tool Length:	49.00				



DRILL STEM TEST REPORT

F.G.Holl Company L.L.C.

7-30s-13w Barber

9431 East Central Suite 100
Wichita, Kansas 67206-2563

Bell "A" #1-7

Job Ticket: 15865

DST#: 7

ATTN: Rene Husted

Test Start: 2012.02.14 @ 09:45:00

GENERAL INFORMATION:

Formation: **Arbuckle**

Deviated: No Whipstock: ft (KB)

Time Tool Opened: 00:00:00

Time Test Ended: 00:00:00

Test Type: Conventional Bottom Hole (Initial)

Tester: Gene Budig

Unit No: 3335-44 Pratt

Interval: 4674.00 ft (KB) To 4695.00 ft (KB) (TVD)

Reference Elevations: 1855.00 ft (KB)

Total Depth: 4695.00 ft (KB) (TVD)

1842.00 ft (CF)

Hole Diameter: 7.88 inches Hole Condition: Fair

KB to GR/CF: 13.00 ft

Serial #: 8400 Inside

Press @ Run Depth: 1375.06 psig @ 4691.00 ft (KB)

Capacity: 5000.00 psig

Start Date: 2012.02.14

End Date:

2012.02.14

Last Calib.: 2012.02.15

Start Time: 09:15:00

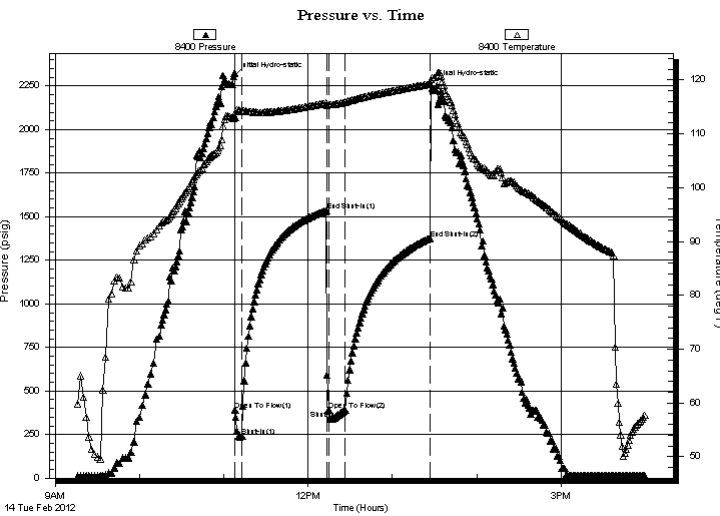
End Time:

16:00:00

Time On Btm: 2012.02.14 @ 11:07:00

Time Off Btm: 2012.02.14 @ 13:27:30

TEST COMMENT: 1st Opening 5 Minutes Good blow built to the bottom of a 5 gallon bucket in 2 minutes
1st Shut-In 60 Minutes-No blow back
2nd Opening 15 Minutes-Good bow built to the bottom of a 5 gallon bucet in 1 minute
2nd Shut_in 60 Minutes-No blow back



PRESSURE SUMMARY

Time (Min.)	Pressure (psig)	Temp (deg F)	Annotation
0	2302.74	112.90	Initial Hydro-static
1	389.19	113.13	Open To Flow (1)
6	240.50	114.24	Shut-In(1)
66	1534.64	115.72	End Shut-In(1)
68	392.55	115.39	Open To Flow (2)
80	390.73	115.87	Shut-In(2)
140	1375.06	119.26	End Shut-In(2)
141	2258.81	120.09	Final Hydro-static

Recovery

Length (ft)	Description	Volume (bbl)
0.00	180 Gas in the pipe	0.00
100.00	Very Slightly Oil cut Muddy Water	0.49
0.00	1%Oil 30%Mud 69%Water	0.00
120.00	Slightly Muddy Water w with a trace of oil	0.95
0.00	Trace of Oil 8%Mud 92%Water	0.00
120.00	Slightly muddy w ater w with a trace of oil	1.68

Gas Rates

	Choke (inches)	Pressure (psig)	Gas Rate (Mcf/d)



DRILL STEM TEST REPORT

F.G.Holl Company L.L.C.

7-30s-13w Barber

9431 East Central Suite 100
Wichita, Kansas 67206-2563

Bell "A" #1-7

Job Ticket: 15865

DST#: 7

ATTN: Rene Husted

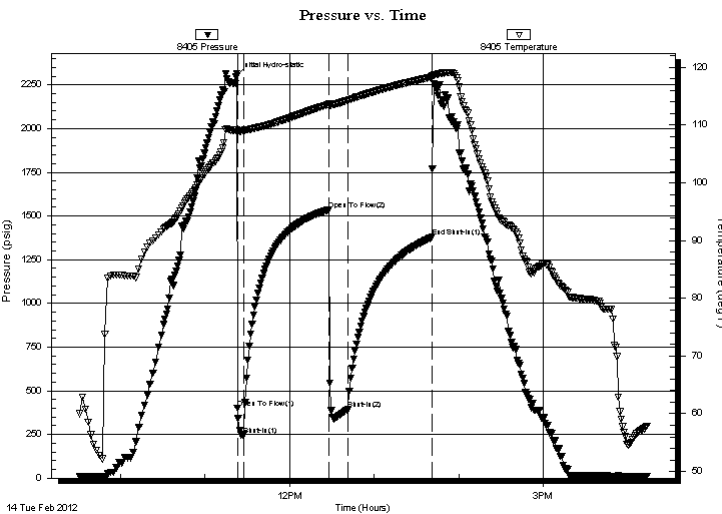
Test Start: 2012.02.14 @ 09:45:00

GENERAL INFORMATION:

Formation: **Arbuckle**
 Deviated: No Whipstock: ft (KB)
 Test Type: Conventional Bottom Hole (Initial)
 Time Tool Opened: 00:00:00
 Tester: Gene Budig
 Time Test Ended: 00:00:00
 Unit No: 3335-44 Pratt
 Interval: **4674.00 ft (KB) To 4695.00 ft (KB) (TVD)**
 Reference Elevations: 1855.00 ft (KB)
 Total Depth: 4695.00 ft (KB) (TVD)
 1842.00 ft (CF)
 Hole Diameter: 7.88 inches
 Hole Condition: Fair
 KB to GR/CF: 13.00 ft

Serial #: 8405 Outside
 Press @ Run Depth: 1378.27 psig @ 4692.00 ft (KB) Capacity: 5000.00 psig
 Start Date: 2012.02.14 End Date: 2012.02.14 Last Calib.: 2012.02.15
 Start Time: 09:30:00 End Time: 16:13:30 Time On Btm: 2012.02.14 @ 11:22:00
 Time Off Btm:

TEST COMMENT: 1st Opening 5 Minutes Good blow built to the bottom of a 5 gallon bucket in 2 minutes
 1st Shut-In 60 Minutes-No blow back
 2nd Opening 15 Minutes-Good bow built to the bottom of a 5 gallon bucet in 1 minute
 2nd Shut_in 60 Minutes-No blow back



PRESSURE SUMMARY

Time (Min.)	Pressure (psig)	Temp (deg F)	Annotation
0	2296.81	109.10	Initial Hydro-static
1	398.94	108.81	Open To Flow (1)
6	248.02	109.02	Shut-In(1)
66	1536.73	113.60	Open To Flow (2)
80	391.77	114.27	Shut-In(2)
139	1378.27	118.34	End Shut-In(1)

Recovery

Length (ft)	Description	Volume (bbl)
0.00	180 Gas in the pipe	0.00
100.00	Very Slightly Oil cut Muddy Water	0.49
0.00	1%Oil 30%Mud 69%Water	0.00
120.00	Slightly Muddy Water w with a trace of oil	0.95
0.00	Trace of Oil 8%Mud 92%Water	0.00
120.00	Slightly muddy w ater w with a trace of oil	1.68

Gas Rates

Choke (inches)	Pressure (psig)	Gas Rate (Mcf/d)



DRILL STEM TEST REPORT

Prepared For: **F.G.Holl Company L.L.C.**

9431 East Central Suite 100
Wichita, Kansas 67206-2563

ATTN: Rene Husted

Bell "A" #1-7

7-30s-13w Barber

Start Date: 2012.02.14 @ 09:45:00

End Date: 2012.02.14 @ 00:00:00

Job Ticket #: 15865 DST #: 7

Superior Testers Enterprises LLC
PO Box 138 Great Bend KS 67530
1-800-792-6902

Printed: 2012.02.15 @ 02:53:13