

**TRILOBITE
TESTING, INC.**

DRILL STEM TEST REPORT

Prepared For: **Herman L Loeb, LLC**

PO Box 838
Lawrenceville IL 62439

ATTN: George Payne

Kroutwurst #19

34-16s-11w Barton, KS

Start Date: 2011.11.08 @ 16:41:31

End Date: 2011.11.09 @ 02:33:31

Job Ticket #: 44872 DST #: 1

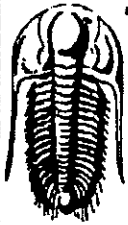
Trilobite Testing, Inc

PO Box 362 Hays, KS 67601

ph: 785-625-4778 fax: 785-625-5620

Printed: 2011.11.16 @ 11:26:14

Herman L Loeb, LLC 34-16s-11w Barton, KS Kroutwurst #19 DST # 1 Arbuckle 2011.11.08



**TRILOBITE
TESTING, INC**

DRILL STEM TEST REPORT

Herman L Loeb, LLC
 PO Box 838
 Lawrenceville IL 62439
 ATTN: George Payne

34-16s-11w Barton,KS
Kroutwurst #19
 Job Ticket: 44872 DST#: 1
 Test Start: 2011.11.08 @ 16:41:31

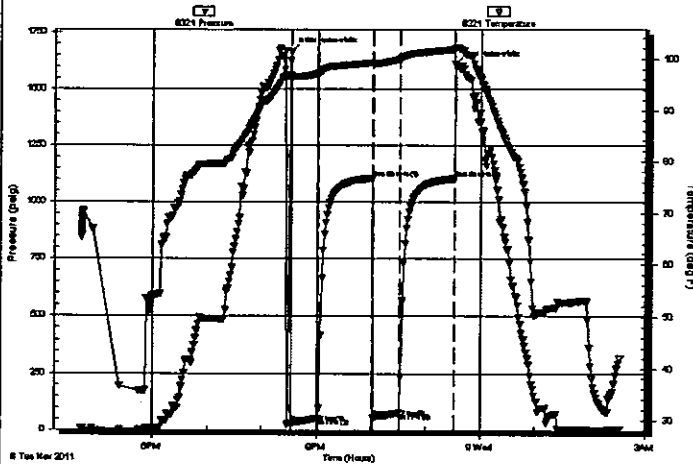
GENERAL INFORMATION:

Formation: **Arbuckle**
 Deviated: **No Whipstock:** ft (KB)
 Time Tool Opened: 20:32:01
 Time Test Ended: 02:33:31
 Interval: **3380.00 ft (KB) To 3415.00 ft (KB) (TVD)**
 Total Depth: **3415.00 ft (KB) (TVD)**
 Hole Diameter: **7.88 inches** Hole Condition: **Good**
 Test Type: **Conventional Bottom Hole (Initial)**
 Tester: **Jeff Brown**
 Unit No: **44**
 Reference Elevations: **1953.00 ft (KB)**
1943.00 ft (CF)
 KB to GR/CF: **10.00 ft**

Serial #: 8321 Inside
 Press@RunDepth: **77.07 psig @ 3383.00 ft (KB)** Capacity: **8000.00 psig**
 Start Date: **2011.11.08** End Date: **2011.11.09** Last Calib.: **2011.11.09**
 Start Time: **16:41:32** End Time: **02:32:31** Time On Btm: **2011.11.08 @ 20:31:31**
 Time Off Btm: **2011.11.08 @ 23:32:01**

TEST COMMENT: IFF-Weak blow built to 3 1/4 in
 ISI-Dead no blow back
 FFP-Weak blow built to 3 1/4 in
 FSI-Dead no blow back

Pressure vs. Time



PRESSURE SUMMARY

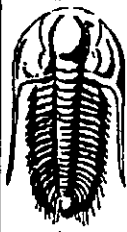
Time (Min.)	Pressure (psig)	Temp (deg F)	Annotation
0	1664.05	96.85	Initial Hydro-static
1	31.51	96.59	Open To Flow (1)
30	53.80	97.22	Shut-In(1)
90	1105.32	99.32	End Shut-In(1)
90	57.40	99.07	Open To Flow (2)
120	77.07	100.00	Shut-In(2)
180	1103.05	101.79	End Shut-In(2)
181	1609.10	102.09	Final Hydro-static

Recovery

Length (ft)	Description	Volume (bbl)
63.00	OCM25%O75%M	0.31
31.00	HOCM40%O60%M	0.15
33.00	Gassy Oil 10%G90%O	0.16
0.00	94-GIP	0.00

Gas Rates

	Choke (inches)	Pressure (psig)	Gas Rate (Mcf/d)



**TRILOBITE
TESTING, INC**

DRILL STEM TEST REPORT

TOOL DIAGRAM

Herman L Loeb, LLC
PO Box 838
Lawrenceville IL 62439
ATTN: George Payne

34-16s-11w Barton, KS
Kroutwurst #19
Job Ticket: 44872 **DST#: 1**
Test Start: 2011.11.08 @ 16:41:31

Tool Information

Drill Pipe:	Length: 3160.00 ft	Diameter: 3.80 inches	Volume: 44.33 bbl	Tool Weight: 2000.00 lb
Heavy Wt. Pipe:	Length: 0.00 ft	Diameter: 2.70 inches	Volume: 0.00 bbl	Weight set on Packer: 20000.00 lb
Drill Collar:	Length: 218.00 ft	Diameter: 2.25 inches	Volume: 1.07 bbl	Weight to Pull Loose: 59000.00 lb
			<u>Total Volume: 45.40 bbl</u>	Tool Chased 0.00 ft
Drill Pipe Above KB:	21.00 ft			String Weight: Initial 54000.00 lb
Depth to Top Packer:	3380.00 ft			Final 55000.00 lb
Depth to Bottom Packer:	ft			
Interval between Packers:	35.00 ft			
Tool Length:	58.00 ft			
Number of Packers:	2	Diameter: 6.75 inches		
Tool Comments:				

Tool Description	Length (ft)	Serial No.	Position	Depth (ft)	Accum. Lengths
Change Over Sub	1.00			3358.00	
Shut In Tool	5.00			3363.00	
Hydraulic tool	5.00			3368.00	
Safety Joint	3.00			3371.00	
Packer	4.00			3375.00	23.00 Bottom Of Top Packer
Packer	5.00			3380.00	
Stubb	1.00			3381.00	
Perforations	2.00			3383.00	
Recorder	0.00	8321	Inside	3383.00	
Recorder	0.00	8737	Outside	3383.00	
Perforations	29.00			3412.00	
Bullnose	3.00			3415.00	35.00 Bottom Packers & Anchor
Total Tool Length:	58.00				



**TRILOBITE
TESTING, INC**

DRILL STEM TEST REPORT

FLUID SUMMARY

Herrman L. Loeb, LLC
 PO Box 838
 Lawrenceville IL 62439
 ATTN: George Payne

34-16s-11w Barton, KS
Kroutwurst #19
 Job Ticket: 44872 DST#: 1
 Test Start: 2011.11.08 @ 16:41:31

Mud and Cushion Information

Mud Type: Gel Chem	Cushion Type:	Oil API: 41 deg API
Mud Weight: 9.00 lb/gal	Cushion Length: ft	Water Salinity: ppm
Viscosity: 49.00 sec/qt	Cushion Volume: bbl	
Water Loss: 7.99 in ³	Gas Cushion Type:	
Resistivity: ohm.m	Gas Cushion Pressure: psig	
Salinity: 5900.00 ppm		
Filter Cake: inches		

Recovery Information

Recovery Table

Length ft	Description	Volume bbl
63.00	OCM 25%O75%M	0.310
31.00	HOCM 40%O60%M	0.152
33.00	Gassy Oil 10%G90%O	0.162
0.00	94-GIP	0.000

Total Length: 127.00 ft Total Volume: 0.624 bbl

Num Fluid Samples: 0 Num Gas Bombs: 0 Serial #:
 Laboratory Name: Laboratory Location:
 Recovery Comments:

