



TEMPORARY ABANDONMENT WELL APPLICATION

OPERATOR: License# _____
 Name: _____
 Address 1: _____
 Address 2: _____
 City: _____ State: _____ Zip: _____ + _____
 Contact Person: _____
 Phone: (_____) _____
 Contact Person Email: _____
 Field Contact Person: _____
 Field Contact Person Phone: (_____) _____

API No. 15- _____
 Spot Description: _____
 _____ Sec. _____ Twp. _____ S. R. _____ E W
 _____ feet from N / S Line of Section
 _____ feet from E / W Line of Section
 GPS Location: Lat: _____, Long: _____
 County: _____ (e.g. xx.xxxxx) (e.g. -xxx.xxxxx)
 Lease Name: _____ Well #: _____
 Elevation: _____ GL KB
 Well Type: (check one) Oil Gas OG WSW Other: _____
 SWD Permit #: _____ ENHR Permit #: _____
 Gas Storage Permit #: _____
 Spud Date: _____ Date Shut-In: _____

	Conductor	Surface	Production	Intermediate	Liner	Tubing
Size						
Setting Depth						
Amount of Cement						
Top of Cement						
Bottom of Cement						

Casing Fluid Level: _____ How Determined? _____ Date: _____
 Casing Squeeze(s): _____ to _____ w / _____ sacks of cement, _____ to _____ w / _____ sacks of cement. Date: _____
 (top) (bottom) (top) (bottom)
 Do you have a valid Oil & Gas Lease? Yes No
 Depth and Type: Junk in Hole at _____ (depth) Tools in Hole at _____ (depth) Casing Leaks: Yes No Depth of casing leak(s): _____
 Type Completion: ALT. I ALT. II Depth of: DV Tool: _____ w / _____ sacks of cement Port Collar: _____ w / _____ sack of cement
 (depth) (depth)
 Packer Type: _____ Size: _____ Inch Set at: _____ Feet
 Total Depth: _____ Plug Back Depth: _____ Plug Back Method: _____

Geological Data:

Formation Name	Formation Top	Formation Base	Completion Information
1. _____	At: _____	to _____ Feet	Perforation Interval _____ to _____ Feet or Open Hole Interval _____ to _____ Feet
2. _____	At: _____	to _____ Feet	Perforation Interval _____ to _____ Feet or Open Hole Interval _____ to _____ Feet

Submitted Electronically

Do NOT Write in This Space - KCC USE ONLY

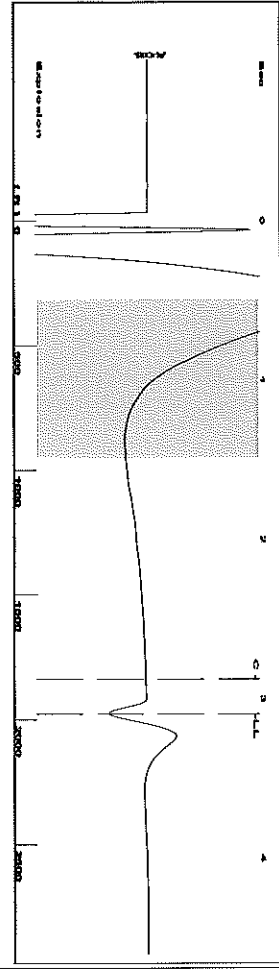
Date Tested: _____ Results: _____ Date Plugged: _____ Date Repaired: _____ Date Put Back in Service: _____

Review Completed by: _____ Comments: _____ TA Approved: Yes Denied

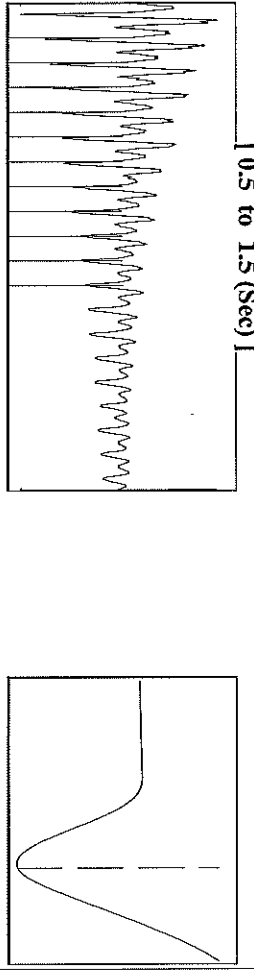
Mail to the Appropriate KCC Conservation Office:

	KCC District Office #1 - 210 E. Frontview, Suite A, Dodge City, KS 67801	Phone 620.225.8888
	KCC District Office #2 - 3450 N. Rock Road, Building 600, Suite 601, Wichita, KS 67226	Phone 316.630.4000
	KCC District Office #3 - 1500 SW Seventh Steet, Chanute, KS 66720	Phone 620.432.2300
	KCC District Office #4 - 2301 E. 13th Street, Hays, KS 67601-2651	Phone 785.625.0550
	Underground Porosity Gas Storage (UPGS) 8200 E. 34th Street Circle N., Suite 1003, Wichita, KS 67226	Phone 316.734.4933

Group: MyWells Well: Hanke 1-6 (acquired on: 04/13/12 14:26:38)



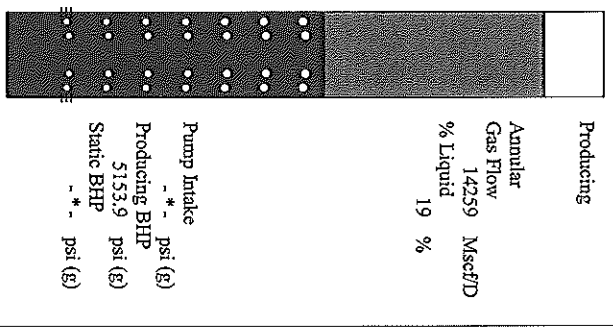
Filter_Type High Pass Automatic Collar Count Yes
 Manual Acoustic Vel 0.124558 ft/s Manual JTS/sec 19.6464
 Time 3.098 sec
 Joints 62.3837 Jts
 Depth 1977.56 ft



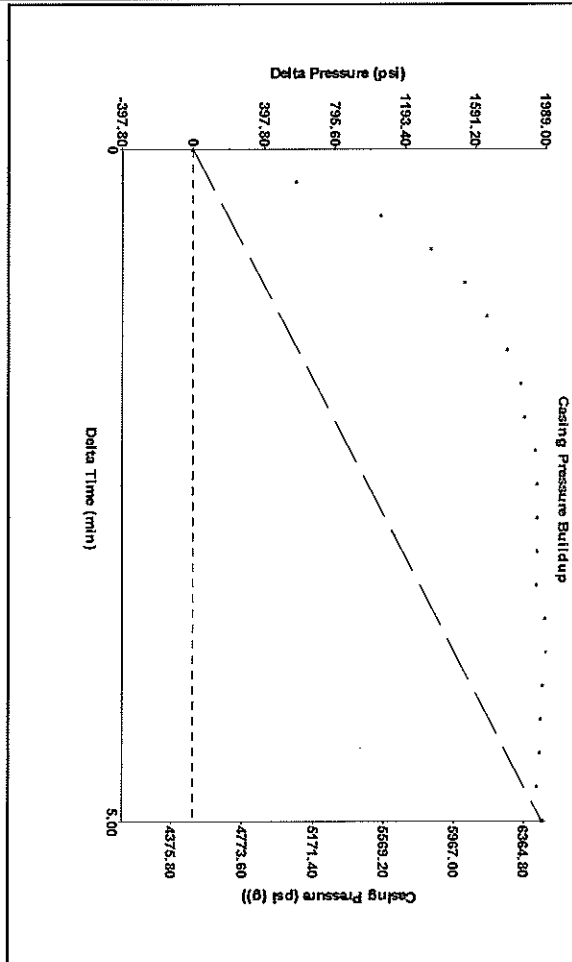
Analysis Method: Automatic

Group: MyWells Well: Hanke 1-6 (acquired on: 04/13/12 14:26:38)

Production	Potential	Casing Pressure	Producing
Current	BBL/D	4498.4 psi (g)	Annular
Oil	BBL/D	Casing Pressure Buildup	Gas Flow
Water	BBL/D	1967.3 psi	14259 Mscf/D
Gas	Mscf/D	5.00 min	% Liquid
IPR Method	Vogel	Gas/Liquid Interface Pressure	19 %
PBHP/SBHP	0.0	4742.6 psi (g)	
Production Efficiency		Liquid Level Depth	
Oil	40 deg-API	1977.56 ft	
Water	1.05 Sp.Gr.H2O	Pump Intake Depth	
Gas	0.70 Sp.Gr.AIR	- * - ft	
Acoustic Velocity	1276.67 ft/s	Formation Depth	
		4234.00 ft	

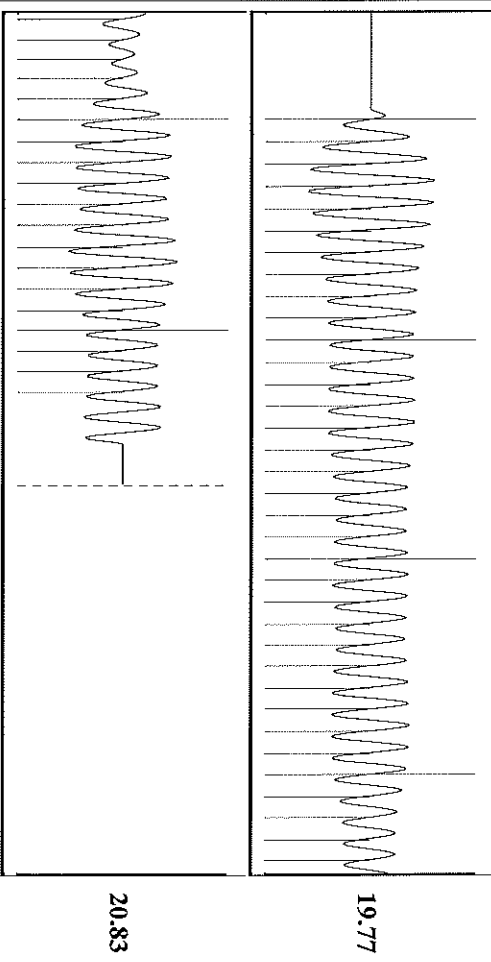


Group: MyWells Well: Hanke 1-6 (acquired on: 04/13/12 14:26:38)



Change in Pressure 1967.31 psi PT 6147
 Change in Time 5.00 min Range 0 - ? psi

Group: MyWells Well: Hanke 1-6 (acquired on: 04/13/12 14:26:38)



Acoustic Velocity 1276.67 ft/s Joints counted 53
 Joints Per Second 20.1368 Jts/sec Joints to liquid level 62.3837
 Depth to liquid level 1977.56 ft Filter Width 17.6464
 Automatic Collar Count Yes Time to 1st Collar 2.88