



Confidentiality Requested:

Yes  No

KANSAS CORPORATION COMMISSION 1078187  
OIL & GAS CONSERVATION DIVISION

Form ACO-1  
August 2013

Form must be Typed  
Form must be Signed  
All blanks must be Filled

WELL COMPLETION FORM  
WELL HISTORY - DESCRIPTION OF WELL & LEASE

OPERATOR: License # \_\_\_\_\_

Name: \_\_\_\_\_

Address 1: \_\_\_\_\_

Address 2: \_\_\_\_\_

City: \_\_\_\_\_ State: \_\_\_\_\_ Zip: \_\_\_\_\_ + \_\_\_\_\_

Contact Person: \_\_\_\_\_

Phone: ( \_\_\_\_\_ ) \_\_\_\_\_

CONTRACTOR: License # \_\_\_\_\_

Name: \_\_\_\_\_

Wellsite Geologist: \_\_\_\_\_

Purchaser: \_\_\_\_\_

Designate Type of Completion:

- New Well       Re-Entry       Workover
- Oil       WSW       SWD       SIOW
- Gas       D&A       ENHR       SIGW
- OG       GSW       Temp. Abd.
- CM (Coal Bed Methane)
- Cathodic       Other (Core, Expl., etc.): \_\_\_\_\_

If Workover/Re-entry: Old Well Info as follows:

Operator: \_\_\_\_\_

Well Name: \_\_\_\_\_

Original Comp. Date: \_\_\_\_\_ Original Total Depth: \_\_\_\_\_

- Deepening       Re-perf.       Conv. to ENHR       Conv. to SWD
- Plug Back       Conv. to GSW       Conv. to Producer
- Commingled      Permit #: \_\_\_\_\_
- Dual Completion      Permit #: \_\_\_\_\_
- SWD      Permit #: \_\_\_\_\_
- ENHR      Permit #: \_\_\_\_\_
- GSW      Permit #: \_\_\_\_\_

Spud Date or Recompletion Date	Date Reached TD	Completion Date or Recompletion Date
-----------------------------------	-----------------	---

API No. 15 - \_\_\_\_\_

Spot Description: \_\_\_\_\_

\_\_\_\_\_ - \_\_\_\_\_ - \_\_\_\_\_ Sec. \_\_\_\_\_ Twp. \_\_\_\_\_ S. R. \_\_\_\_\_  East  West

\_\_\_\_\_ Feet from  North /  South Line of Section

\_\_\_\_\_ Feet from  East /  West Line of Section

Footages Calculated from Nearest Outside Section Corner:

- NE       NW       SE       SW

GPS Location: Lat: \_\_\_\_\_, Long: \_\_\_\_\_  
(e.g. xx.xxxxx)      (e.g. -xxx.xxxxx)

Datum:  NAD27       NAD83       WGS84

County: \_\_\_\_\_

Lease Name: \_\_\_\_\_ Well #: \_\_\_\_\_

Field Name: \_\_\_\_\_

Producing Formation: \_\_\_\_\_

Elevation: Ground: \_\_\_\_\_ Kelly Bushing: \_\_\_\_\_

Total Vertical Depth: \_\_\_\_\_ Plug Back Total Depth: \_\_\_\_\_

Amount of Surface Pipe Set and Cemented at: \_\_\_\_\_ Feet

Multiple Stage Cementing Collar Used?  Yes  No

If yes, show depth set: \_\_\_\_\_ Feet

If Alternate II completion, cement circulated from: \_\_\_\_\_

feet depth to: \_\_\_\_\_ w/ \_\_\_\_\_ sx cmt.

Drilling Fluid Management Plan

*(Data must be collected from the Reserve Pit)*

Chloride content: \_\_\_\_\_ ppm Fluid volume: \_\_\_\_\_ bbls

Dewatering method used: \_\_\_\_\_

Location of fluid disposal if hauled offsite: \_\_\_\_\_

Operator Name: \_\_\_\_\_

Lease Name: \_\_\_\_\_ License #: \_\_\_\_\_

Quarter \_\_\_\_\_ Sec. \_\_\_\_\_ Twp. \_\_\_\_\_ S. R. \_\_\_\_\_  East  West

County: \_\_\_\_\_ Permit #: \_\_\_\_\_

AFFIDAVIT

I am the affiant and I hereby certify that all requirements of the statutes, rules and regulations promulgated to regulate the oil and gas industry have been fully complied with and the statements herein are complete and correct to the best of my knowledge.

Submitted Electronically

KCC Office Use ONLY

- Confidentiality Requested  
Date: \_\_\_\_\_
- Confidential Release Date: \_\_\_\_\_
- Wireline Log Received
- Geologist Report Received
- UIC Distribution
- ALT  I  II  III Approved by: \_\_\_\_\_ Date: \_\_\_\_\_

1078187

Operator Name: \_\_\_\_\_ Lease Name: \_\_\_\_\_ Well #: \_\_\_\_\_

Sec. \_\_\_\_\_ Twp. \_\_\_\_\_ S. R. \_\_\_\_\_  East  West County: \_\_\_\_\_

**INSTRUCTIONS:** Show important tops of formations penetrated. Detail all cores. Report all final copies of drill stems tests giving interval tested, time tool open and closed, flowing and shut-in pressures, whether shut-in pressure reached static level, hydrostatic pressures, bottom hole temperature, fluid recovery, and flow rates if gas to surface test, along with final chart(s). Attach extra sheet if more space is needed.

Final Radioactivity Log, Final Logs run to obtain Geophysical Data and Final Electric Logs must be emailed to kcc-well-logs@kcc.ks.gov. Digital electronic log files must be submitted in LAS version 2.0 or newer AND an image file (TIFF or PDF).

Drill Stem Tests Taken <i>(Attach Additional Sheets)</i>	<input type="checkbox"/> Yes <input type="checkbox"/> No	<input type="checkbox"/> Log	Formation (Top), Depth and Datum	<input type="checkbox"/> Sample
Samples Sent to Geological Survey	<input type="checkbox"/> Yes <input type="checkbox"/> No	Name	Top	Datum
Cores Taken	<input type="checkbox"/> Yes <input type="checkbox"/> No			
Electric Log Run	<input type="checkbox"/> Yes <input type="checkbox"/> No			
List All E. Logs Run:				

CASING RECORD <input type="checkbox"/> New <input type="checkbox"/> Used							
Report all strings set-conductor, surface, intermediate, production, etc.							
Purpose of String	Size Hole Drilled	Size Casing Set (In O.D.)	Weight Lbs. / Ft.	Setting Depth	Type of Cement	# Sacks Used	Type and Percent Additives

ADDITIONAL CEMENTING / SQUEEZE RECORD				
Purpose:	Depth Top Bottom	Type of Cement	# Sacks Used	Type and Percent Additives
<input type="checkbox"/> Perforate				
<input type="checkbox"/> Protect Casing				
<input type="checkbox"/> Plug Back TD				
<input type="checkbox"/> Plug Off Zone				

Did you perform a hydraulic fracturing treatment on this well?  Yes  No *(If No, skip questions 2 and 3)*

Does the volume of the total base fluid of the hydraulic fracturing treatment exceed 350,000 gallons?  Yes  No *(If No, skip question 3)*

Was the hydraulic fracturing treatment information submitted to the chemical disclosure registry?  Yes  No *(If No, fill out Page Three of the ACO-1)*

Shots Per Foot	PERFORATION RECORD - Bridge Plugs Set/Type Specify Footage of Each Interval Perforated	Acid, Fracture, Shot, Cement Squeeze Record <i>(Amount and Kind of Material Used)</i>	Depth

TUBING RECORD: Size: \_\_\_\_\_ Set At: \_\_\_\_\_ Packer At: \_\_\_\_\_ Liner Run:  Yes  No

Date of First, Resumed Production, SWD or ENHR: \_\_\_\_\_ Producing Method:  
 Flowing  Pumping  Gas Lift  Other *(Explain)* \_\_\_\_\_

Estimated Production Per 24 Hours	Oil Bbls.	Gas Mcf	Water Bbls.	Gas-Oil Ratio	Gravity

<b>DISPOSITION OF GAS:</b> <input type="checkbox"/> Vented <input type="checkbox"/> Sold <input type="checkbox"/> Used on Lease <i>(If vented, Submit ACO-18.)</i>	<b>METHOD OF COMPLETION:</b> <input type="checkbox"/> Open Hole <input type="checkbox"/> Perf. <input type="checkbox"/> Dually Comp. <input type="checkbox"/> Commingled <i>(Submit ACO-5)</i> <input type="checkbox"/> Other <i>(Specify)</i> _____ <input type="checkbox"/> Other <i>(Specify)</i> _____	<b>PRODUCTION INTERVAL:</b> _____ _____
--	---	---

Conservation Division  
Finney State Office Building  
130 S. Market, Rm. 2078  
Wichita, KS 67202-3802



Phone: 316-337-6200  
Fax: 316-337-6211  
<http://kcc.ks.gov/>

Mark Sievers, Chairman  
Ward Loyd, Commissioner  
Thomas E. Wright, Commissioner

Sam Brownback, Governor

April 06, 2012

Glenna Lowe  
Trans Pacific Oil Corporation  
100 S MAIN STE 200  
WICHITA, KS 67202-3735

Re: ACO1  
API 15-051-26257-00-00  
Leiker B 1-13  
NE/4 Sec.13-15S-18W  
Ellis County, Kansas

Dear Production Department:

We are herewith requesting that the Well Completion Form ACO-1 and attached information for the subject well be held confidential for a period of two years.

Should you have any questions or need additional information regarding subject well, please contact our office.

Respectfully,  
Glenna Lowe



## DRILL STEM TEST REPORT

Prepared For: **Trans Pacific Oil Corp.**

100 South Main Suite 200  
Wichita, Kansas  
67202+3735

ATTN: Bryce Bidleman

**Leiker B 1-13**

**13/15S/18W Ellis Co.**

Start Date: 2012.02.06 @ 05:14:00

End Date: 2012.02.06 @ 00:00:00

Job Ticket #: 18831                      DST #: 1

Superior Testers Enterprises LLC  
PO Box 138 Great Bend KS 67530  
1-800-792-6902

Printed: 2012.02.07 @ 01:32:08



# DRILL STEM TEST REPORT

Trans Pacific Oil Corp.

**13/15S/18W Ellis Co.**

100 South Main Suite 200  
Wichita, Kansas  
67202+3735  
ATTN: Bryce Bidleman

**Leiker B 1-13**

Job Ticket: 18831

**DST#: 1**

Test Start: 2012.02.06 @ 05:14:00

## GENERAL INFORMATION:

Formation: **Lansing " 35" Zone**

Deviated: No Whipstock: ft (KB)

Time Tool Opened: 00:00:00

Time Test Ended: 00:00:00

Test Type: Conventional Bottom Hole (Initial)

Tester: Dylan E Ellis

Unit No: 3345/Great Bend/110

**Interval: 3309.00 ft (KB) To 3340.00 ft (KB) (TVD)**

Reference Elevations: 2009.00 ft (KB)

Total Depth: 3340.00 ft (KB) (TVD)

2004.00 ft (CF)

Hole Diameter: 7.88 inches Hole Condition: Fair

KB to GR/CF: 5.00 ft

**Serial #: 6666 Outside**

Press @ RunDepth: 838.65 psia @ 3336.00 ft (KB)

Capacity: 5000.00 psia

Start Date: 2012.02.06

End Date: 2012.02.07

Last Calib.: 2012.02.07

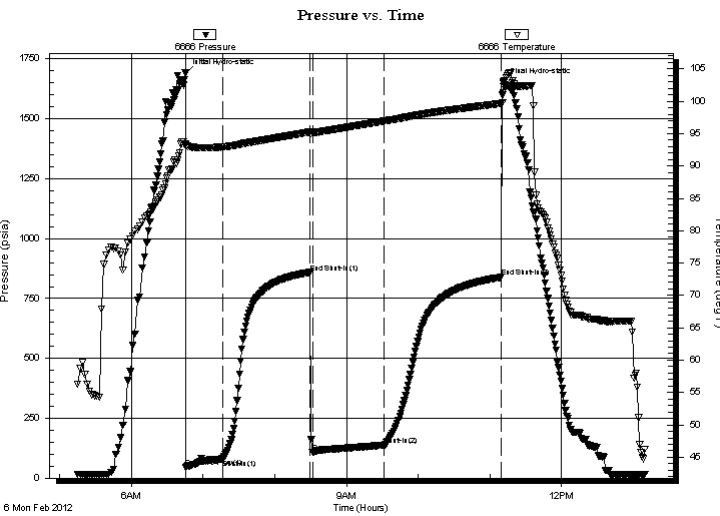
Start Time: 05:14:00

End Time: 13:10:00

Time On Btm: 2012.02.06 @ 06:45:00

Time Off Btm: 2012.02.06 @ 11:11:00

**TEST COMMENT:** 1ST Opening 30 Minutes very weak building blow /blow blew 4 inches into bucket of water  
1ST Shut-In 75 Minutes no blow back  
2ND Opening 60 Minutes very weak building blow /blow blew 4 inches into bucket of water  
2ND Shut-In 90 Minutes no blow back



## PRESSURE SUMMARY

Time (Min.)	Pressure (psia)	Temp (deg F)	Annotation
0	1690.68	93.44	Initial Hydro-static
1	44.85	93.25	Open To Flow (1)
31	80.30	92.94	Shut-In(1)
104	858.30	95.25	End Shut-In(1)
107	107.51	95.14	Open To Flow (2)
167	138.01	96.94	Shut-In(2)
265	838.65	99.66	End Shut-In(2)
266	1650.94	101.31	Final Hydro-static

## Recovery

Length (ft)	Description	Volume (bbl)
310.00	very lightly oil spotted mud	4.35
0.00	5% Oil 95% Mud	0.00

## Gas Rates

Choke (inches)	Pressure (psia)	Gas Rate (Mcf/d)



# DRILL STEM TEST REPORT

Trans Pacific Oil Corp.

**13/15S/18W Ellis Co.**

100 South Main Suite 200  
Wichita, Kansas  
67202+3735  
ATTN: Bryce Bidleman

**Leiker B 1-13**

Job Ticket: 18831

**DST#: 1**

Test Start: 2012.02.06 @ 05:14:00

## GENERAL INFORMATION:

Formation: **Lansing " 35" Zone**

Deviated: No Whipstock: ft (KB)

Time Tool Opened: 00:00:00

Time Test Ended: 00:00:00

Test Type: Conventional Bottom Hole (Initial)

Tester: Dylan E Ellis

Unit No: 3345/Great Bend/110

**Interval: 3309.00 ft (KB) To 3340.00 ft (KB) (TVD)**

Reference Elevations: 2009.00 ft (KB)

Total Depth: 3340.00 ft (KB) (TVD)

2004.00 ft (CF)

Hole Diameter: 7.88 inches Hole Condition: Fair

KB to GR/CF: 5.00 ft

**Serial #: 6731 Inside**

Press @ Run Depth: 837.82 psia @ 3337.00 ft (KB)

Capacity: 5000.00 psia

Start Date: 2012.02.06

End Date: 2012.02.07

Last Calib.: 2012.02.07

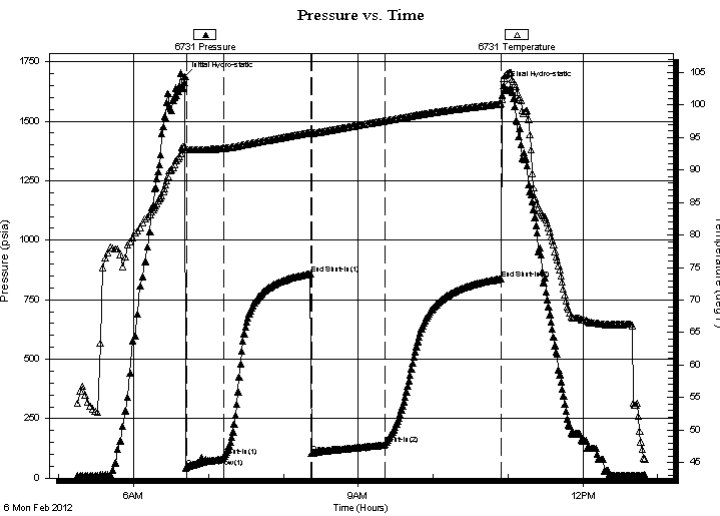
Start Time: 05:14:00

End Time: 12:49:30

Time On Btm: 2012.02.06 @ 06:41:00

Time Off Btm: 2012.02.06 @ 10:56:30

**TEST COMMENT:** 1ST Opening 30 Minutes very weak building blow /blow blew 4 inches into bucket of water  
1ST Shut-In 75 Minutes no blow back  
2ND Opening 60 Minutes very weak building blow /blow blew 4 inches into bucket of water  
2ND Shut-In 90 Minutes no blow back



## PRESSURE SUMMARY

Time (Min.)	Pressure (psia)	Temp (deg F)	Annotation
0	1687.13	93.66	Initial Hydro-static
1	45.42	93.12	Open To Flow (1)
32	90.53	93.33	Shut-In(1)
101	857.98	95.75	End Shut-In(1)
102	105.62	95.63	Open To Flow (2)
161	143.65	97.55	Shut-In(2)
254	837.82	100.15	End Shut-In(2)
256	1650.71	104.10	Final Hydro-static

## Recovery

Length (ft)	Description	Volume (bbl)
310.00	very lightly oil spotted mud	4.35
0.00	5% Oil 95% Mud	0.00

## Gas Rates

	Choke (inches)	Pressure (psia)	Gas Rate (Mcf/d)



# DRILL STEM TEST REPORT

**TOOL DIAGRAM**

Trans Pacific Oil Corp.

**13/15S/18W Ellis Co.**

100 South Main Suite 200  
 Wichita, Kansas  
 67202+3735  
 ATTN: Bryce Bidleman

**Leiker B 1-13**

Job Ticket: 18831

**DST#: 1**

Test Start: 2012.02.06 @ 05:14:00

**Tool Information**

Drill Pipe:	Length: 3304.00 ft	Diameter: 3.80 inches	Volume: 46.35 bbl	Tool Weight: 2000.00 lb
Heavy Wt. Pipe:	Length: 0.00 ft	Diameter: 0.00 inches	Volume: 0.00 bbl	Weight set on Packer: 20000.00 lb
Drill Collar:	Length: 0.00 ft	Diameter: 2.25 inches	Volume: 0.00 bbl	Weight to Pull Loose: 16000.00 lb
			<u>Total Volume: 46.35 bbl</u>	Tool Chased 0.00 ft
Drill Pipe Above KB:	15.00 ft			String Weight: Initial 46000.00 lb
Depth to Top Packer:	3309.00 ft			Final 46000.00 lb
Depth to Bottom Packer:	ft			
Interval between Packers:	31.00 ft			
Tool Length:	51.00 ft			
Number of Packers:	2	Diameter: 6.75 inches		

Tool Comments:

Tool Description	Length (ft)	Serial No.	Position	Depth (ft)	Accum. Lengths
------------------	-------------	------------	----------	------------	----------------

Shut-In Tool	5.00			3294.00	
Hydraulic Tool	5.00			3299.00	
Packer	5.00			3304.00	20.00 Bottom Of Top Packer
Packer	5.00			3309.00	
Anchor	26.00			3335.00	
Recorder	1.00	6666	Outside	3336.00	
Recorder	1.00	6731	Inside	3337.00	
Bull Plug	3.00			3340.00	31.00 Bottom Packers & Anchor

**Total Tool Length: 51.00**



# DRILL STEM TEST REPORT

## FLUID SUMMARY

Trans Pacific Oil Corp.

**13/15S/18W Ellis Co.**

100 South Main Suite 200  
 Wichita, Kansas  
 67202+3735  
 ATTN: Bryce Bidleman

**Leiker B 1-13**

Job Ticket: 18831

**DST#: 1**

Test Start: 2012.02.06 @ 05:14:00

### Mud and Cushion Information

Mud Type: Gel Chem  
 Mud Weight: 9.00 lb/gal  
 Viscosity: 49.00 sec/qt  
 Water Loss: 7.60 in<sup>3</sup>  
 Resistivity: ohm.m  
 Salinity: 5000.00 ppm  
 Filter Cake: 1.00 inches

Cushion Type:  
 Cushion Length: ft  
 Cushion Volume: bbl  
 Gas Cushion Type:  
 Gas Cushion Pressure: psia

Oil API: deg API  
 Water Salinity: ppm

### Recovery Information

Recovery Table

Length ft	Description	Volume bbl
310.00	very lightly oil spotted mud	4.348
0.00	5% Oil 95% Mud	0.000

Total Length: 310.00 ft      Total Volume: 4.348 bbl

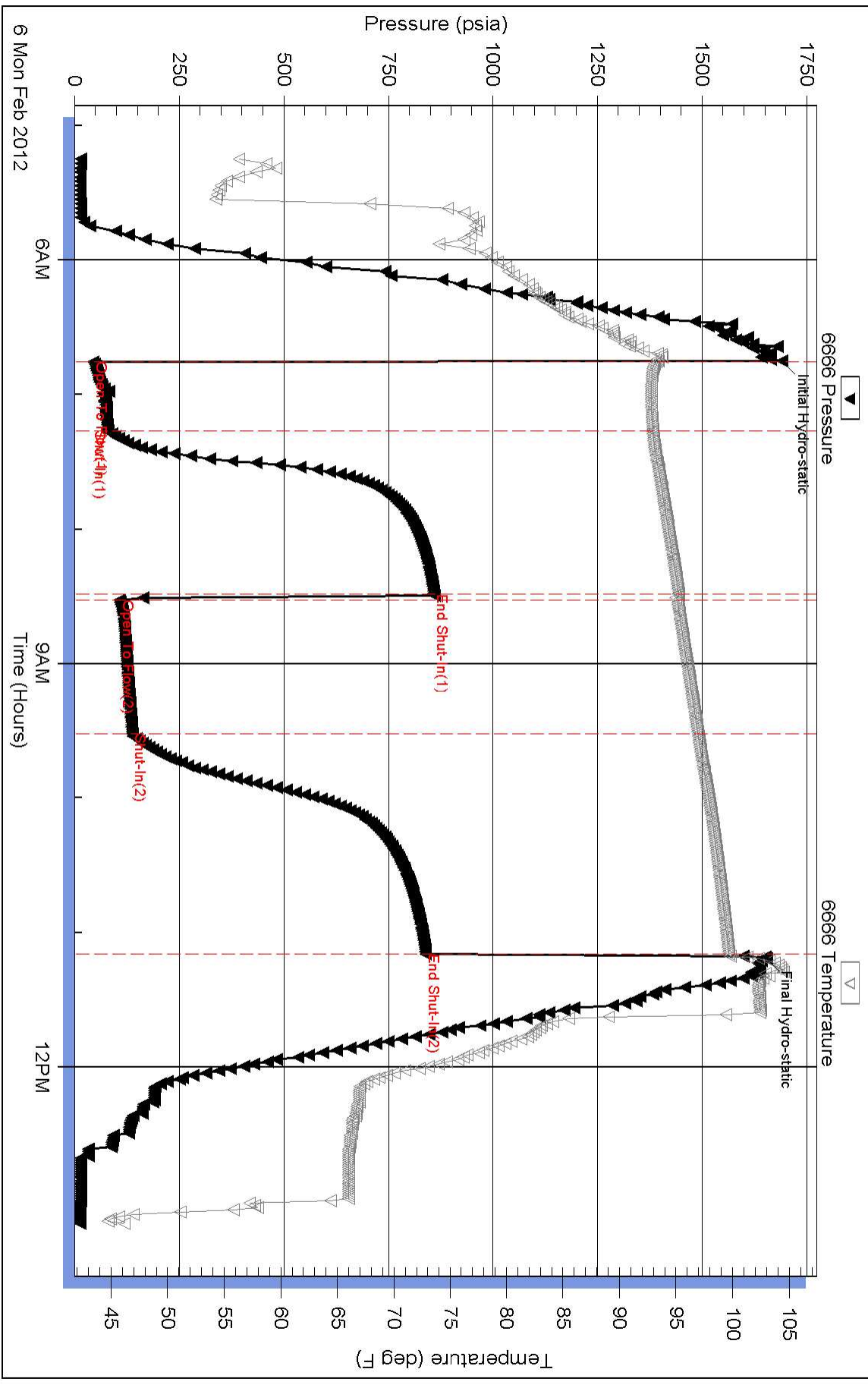
Num Fluid Samples: 0      Num Gas Bombs: 0      Serial #:

Laboratory Name:      Laboratory Location:

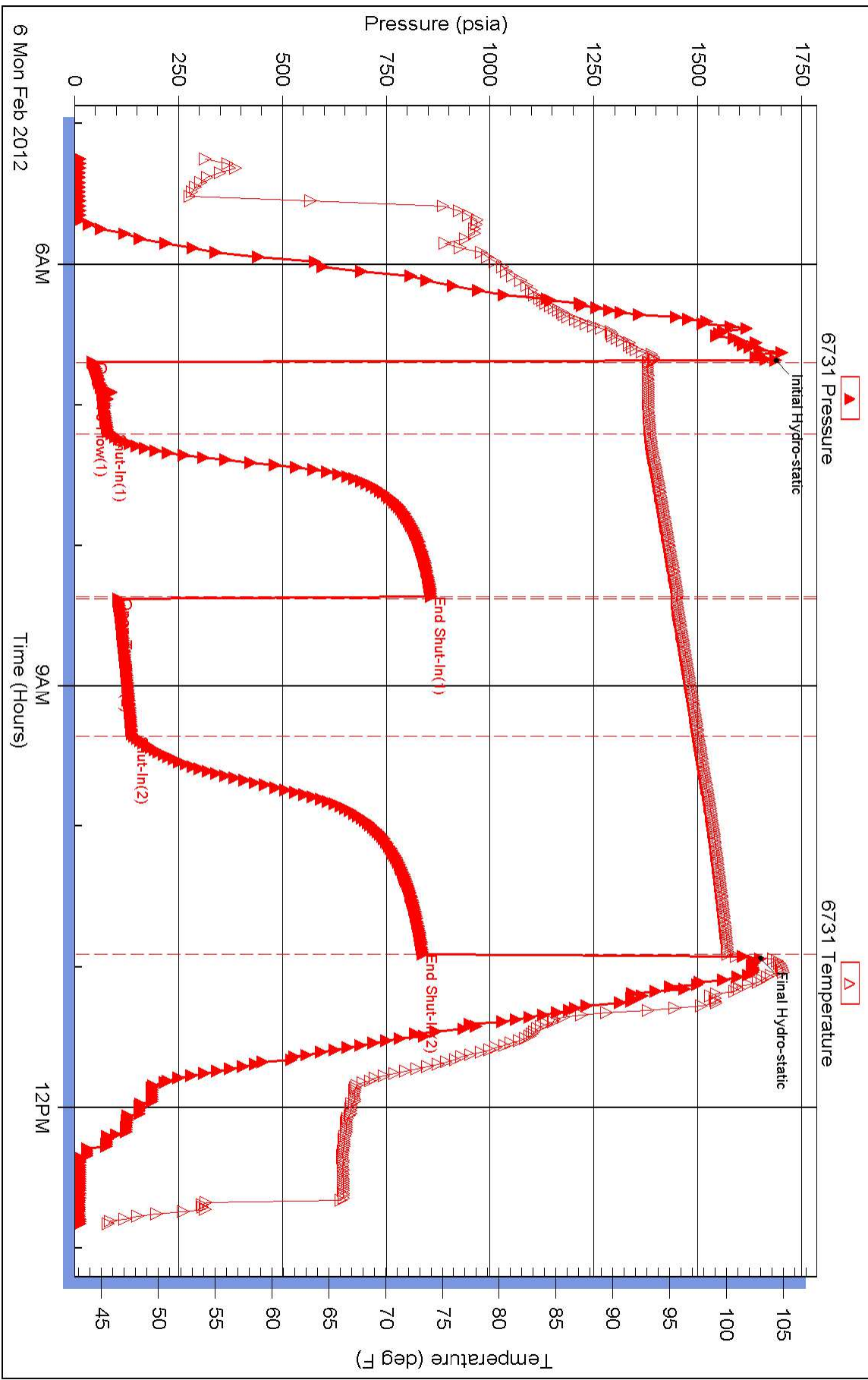
Recovery Comments:



### Pressure vs. Time



### Pressure vs. Time





## DRILL STEM TEST REPORT

Prepared For: **Trans Pacific Oil Corp.**

100 South Main Suite 200  
Wichita, Kansas  
67202+3735

ATTN: Bryce Bidleman

**Leiker B 1-13**

**13/15S/18W Ellis Co.**

Start Date: 2012.02.07 @ 01:35:00

End Date: 2012.02.07 @ 07:58:00

Job Ticket #: 18832                      DST #: 2

Superior Testers Enterprises LLC  
PO Box 138 Great Bend KS 67530  
1-800-792-6902

Printed: 2012.02.07 @ 18:12:48







# DRILL STEM TEST REPORT

**TOOL DIAGRAM**

Trans Pacific Oil Corp.

**13/15S/18W Ellis Co.**

100 South Main Suite 200  
 Wichita, Kansas  
 67202+3735  
 ATTN: Bryce Bidleman

**Leiker B 1-13**

Job Ticket: 18832

**DST#: 2**

Test Start: 2012.02.07 @ 01:35:00

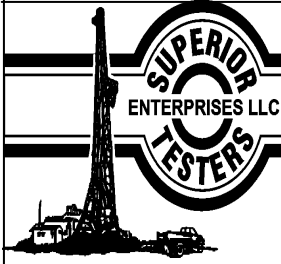
## Tool Information

Drill Pipe:	Length: 3335.00 ft	Diameter: 3.80 inches	Volume: 46.78 bbl	Tool Weight:	2000.00 lb
Heavy Wt. Pipe:	Length: 0.00 ft	Diameter: 0.00 inches	Volume: 0.00 bbl	Weight set on Packer:	20000.00 lb
Drill Collar:	Length: 0.00 ft	Diameter: 2.25 inches	Volume: 0.00 bbl	Weight to Pull Loose:	17000.00 lb
			<u>Total Volume: 46.78 bbl</u>	Tool Chased	0.00 ft
Drill Pipe Above KB:	14.00 ft			String Weight: Initial	46000.00 lb
Depth to Top Packer:	3341.00 ft			Final	47000.00 lb
Depth to Bottom Packer:	ft				
Interval between Packers:	54.47 ft				
Tool Length:	74.47 ft				
Number of Packers:	2	Diameter: 6.75 inches			

Tool Comments:

Tool Description	Length (ft)	Serial No.	Position	Depth (ft)	Accum. Lengths
Shut-In Tool	5.00			3326.00	
Hydraulic Tool	5.00			3331.00	
Packer	5.00			3336.00	20.00 Bottom Of Top Packer
Packer	5.00			3341.00	
Anchor	6.00			3347.00	
Change Over Sub	0.75			3347.75	
Drill Pipe	31.97			3379.72	
Change Over Sub	0.75			3380.47	
Anchor	10.00			3390.47	
Recorder	1.00	6731	Inside	3391.47	
Recorder	1.00	6666	Outside	3392.47	
Bull Plug	3.00			3395.47	54.47 Bottom Packers & Anchor

**Total Tool Length: 74.47**



# DRILL STEM TEST REPORT

## FLUID SUMMARY

Trans Pacific Oil Corp.

**13/15S/18W Ellis Co.**

100 South Main Suite 200  
Wichita, Kansas  
67202+3735  
ATTN: Bryce Bidleman

**Leiker B 1-13**

Job Ticket: 18832

**DST#: 2**

Test Start: 2012.02.07 @ 01:35:00

### Mud and Cushion Information

Mud Type: Gel Chem

Mud Weight: 9.00 lb/gal

Viscosity: 51.00 sec/qt

Water Loss: 7.60 in<sup>3</sup>

Resistivity: ohm.m

Salinity: 4800.00 ppm

Filter Cake: 1.00 inches

Cushion Type:

Cushion Length: ft

Cushion Volume: bbl

Gas Cushion Type:

Gas Cushion Pressure: psia

Oil API:

Water Salinity: ppm

deg API

### Recovery Information

Recovery Table

Length ft	Description	Volume bbl
5.00	Drilling Mud 100%	0.070

Total Length: 5.00 ft      Total Volume: 0.070 bbl

Num Fluid Samples: 0

Num Gas Bombs: 0

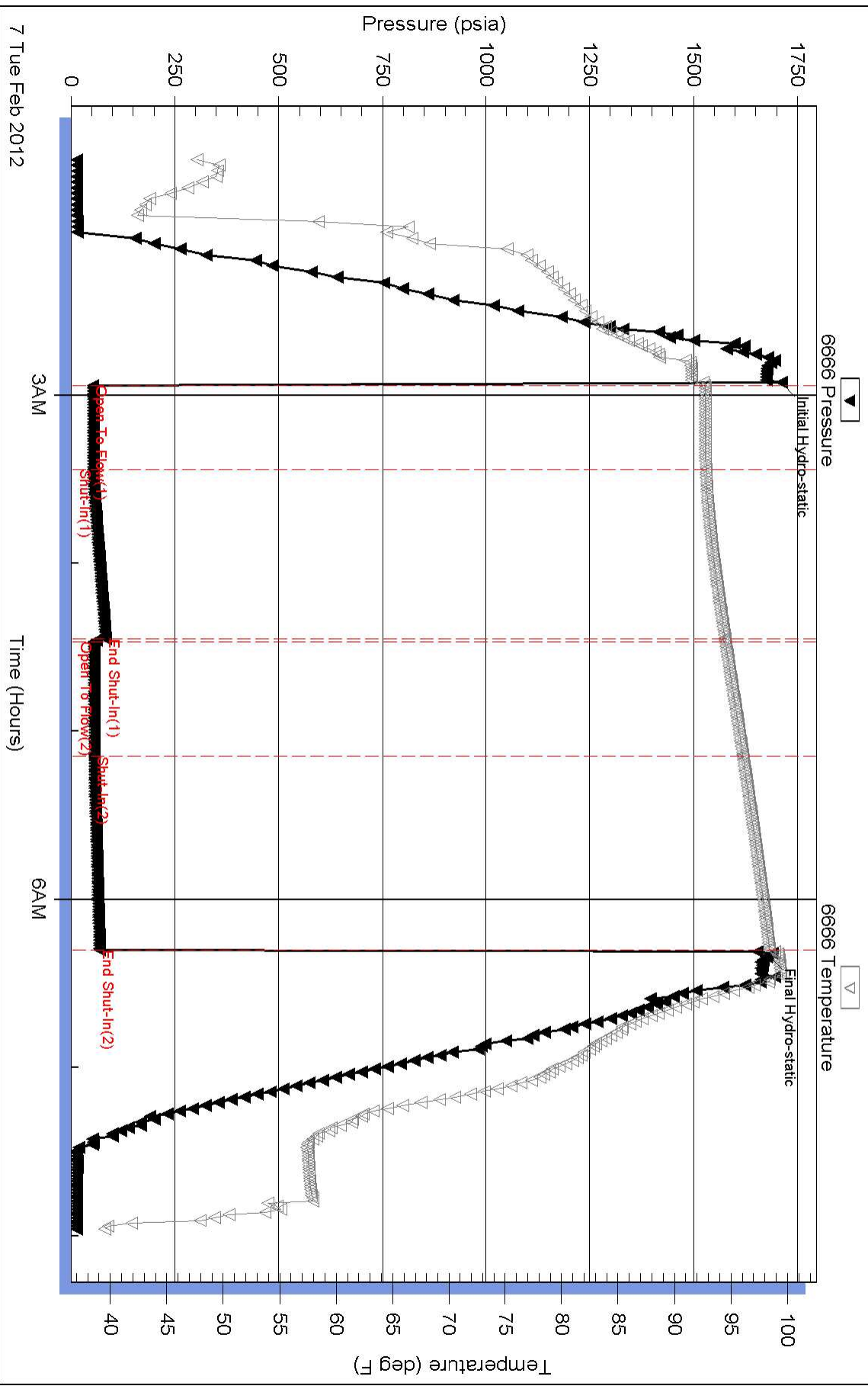
Serial #:

Laboratory Name:

Laboratory Location:

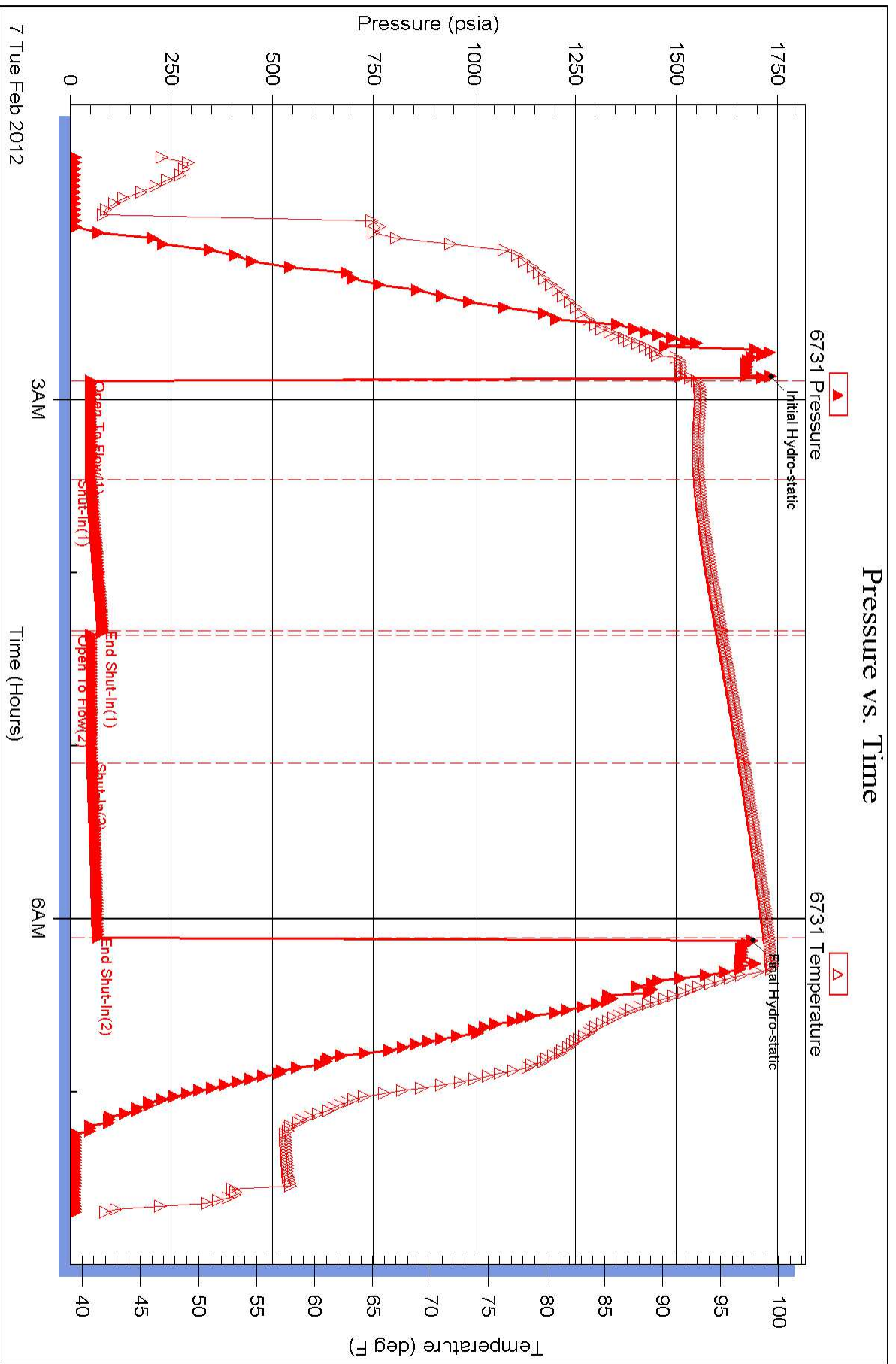
Recovery Comments: Thank You for the work

### Pressure vs. Time





### Pressure vs. Time





## DRILL STEM TEST REPORT

Prepared For: **Trans Pacific Oil Corp.**

100 South Main Suite 200  
Wichita, Kansas  
67202+3735

ATTN: Bryce Bidleman

**Leiker B 1-13**

**13/15S/18W Ellis Co.**

Start Date: 2012.02.08 @ 04:53:00

End Date: 2012.02.08 @ 13:29:00

Job Ticket #: 18833                      DST #: 3

Superior Testers Enterprises LLC  
PO Box 138 Great Bend KS 67530  
1-800-792-6902

Printed: 2012.02.08 @ 23:45:21



# DRILL STEM TEST REPORT

Trans Pacific Oil Corp.  
 100 South Main Suite 200  
 Wichita, Kansas  
 67202+3735  
 ATTN: Bryce Bidleman

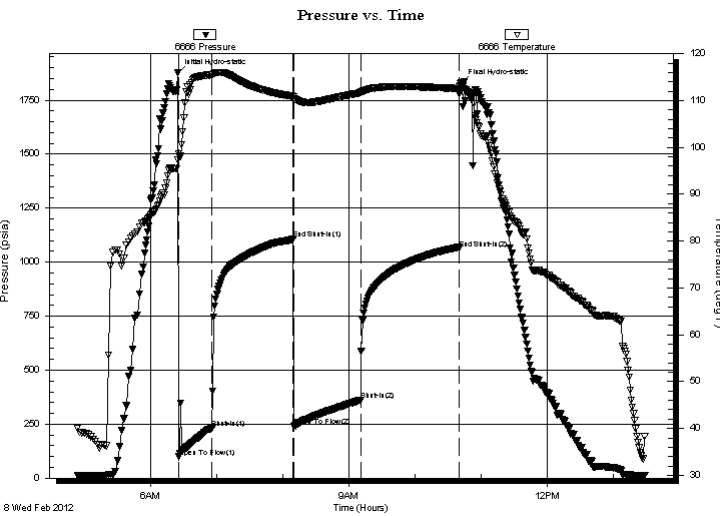
**13/15S/18W Ellis Co.**  
**Leiker B 1-13**  
 Job Ticket: 18833 **DST#: 3**  
 Test Start: 2012.02.08 @ 04:53:00

## GENERAL INFORMATION:

Formation: **Arbuckle**  
 Deviated: No Whipstock: ft (KB)  
 Test Type: Conventional Bottom Hole (Initial)  
 Time Tool Opened: 06:25:30 Tester: Dylan E Ellis  
 Time Test Ended: 13:29:00 Unit No: 3345/Great Bend/110  
 Interval: **3528.00 ft (KB) To 3589.00 ft (KB) (TVD)** Reference Elevations: 2009.00 ft (KB)  
 Total Depth: 3589.00 ft (KB) (TVD) 2004.00 ft (CF)  
 Hole Diameter: 7.88 inches Hole Condition: Fair KB to GR/CF: 5.00 ft

**Serial #: 6666 Outside**  
 Press @ Run Depth: 362.35 psia @ 3585.48 ft (KB) Capacity: 5000.00 psia  
 Start Date: 2012.02.08 End Date: 2012.02.08 Last Calib.: 2012.02.08  
 Start Time: 04:53:00 End Time: 13:29:00 Time On Btm: 2012.02.08 @ 06:24:30  
 Time Off Btm: 2012.02.08 @ 10:41:30

**TEST COMMENT:** 1ST Opening 30 Minutes fair building blow /blow blew to bottom of bucket in 8 minutes  
 1ST Shut-In 75 Minutes yes blow back/surface  
 2ND Opening 60 Minutes steady building blow /blow blew to bottom of bucket in 5 minutes  
 2ND Shut-In 90 Minutes yes blow back/



## PRESSURE SUMMARY

Time (Min.)	Pressure (psia)	Temp (deg F)	Annotation
0	1874.80	97.30	Initial Hydro-static
1	98.21	98.66	Open To Flow (1)
32	231.69	115.51	Shut-In(1)
105	1106.61	110.90	End Shut-In(1)
106	240.41	110.49	Open To Flow (2)
167	362.35	111.67	Shut-In(2)
256	1063.08	112.58	End Shut-In(2)
257	1825.28	113.12	Final Hydro-static

## Recovery

Length (ft)	Description	Volume (bbl)
630.00	Clean Gassy Oil	8.84
0.00	85% Oil 15% Gas	0.00
252.00	Oil cut Gassy Mud	3.53
0.00	10% Oil 15% Gas 75% Mud	0.00
0.00	126' Gas in the pipe	0.00
0.00	Gravity of Oil corrected w as 35	0.00

## Gas Rates

Choke (inches)	Pressure (psia)	Gas Rate (Mcf/d)





# DRILL STEM TEST REPORT

**TOOL DIAGRAM**

Trans Pacific Oil Corp.

**13/15S/18W Ellis Co.**

100 South Main Suite 200  
 Wichita, Kansas  
 67202+3735  
 ATTN: Bryce Bidleman

**Leiker B 1-13**

Job Ticket: 18833

**DST#: 3**

Test Start: 2012.02.08 @ 04:53:00

## Tool Information

Drill Pipe:	Length: 3519.00 ft	Diameter: 3.80 inches	Volume: 49.36 bbl	Tool Weight: 2000.00 lb
Heavy Wt. Pipe:	Length: 0.00 ft	Diameter: 0.00 inches	Volume: 0.00 bbl	Weight set on Packer: 20000.00 lb
Drill Collar:	Length: 0.00 ft	Diameter: 2.25 inches	Volume: 0.00 bbl	Weight to Pull Loose: 55000.00 lb
			<u>Total Volume: 49.36 bbl</u>	Tool Chased 0.00 ft
Drill Pipe Above KB:	11.00 ft			String Weight: Initial 46000.00 lb
Depth to Top Packer:	3528.00 ft			Final 51000.00 lb
Depth to Bottom Packer:	ft			
Interval between Packers:	60.48 ft			
Tool Length:	80.48 ft			
Number of Packers:	2	Diameter:	6.75 inches	

Tool Comments: The final weight was around 51-52,000 but for the first 6 stands we were dragging in the hole any were from 60,000 to 84,000 on the weight indicator.

Tool Description	Length (ft)	Serial No.	Position	Depth (ft)	Accum. Lengths
Shut-In Tool	5.00			3513.00	
Hydraulic Tool	5.00			3518.00	
Packer	5.00			3523.00	20.00 Bottom Of Top Packer
Packer	5.00			3528.00	
Anchor	6.00			3534.00	
Change Over Sub	0.75			3534.75	
Drill Pipe	31.98			3566.73	
Change Over Sub	0.75			3567.48	
Anchor	16.00			3583.48	
Recorder	1.00	6731	Inside	3584.48	
Recorder	1.00	6666	Outside	3585.48	
Bull Plug	3.00			3588.48	60.48 Bottom Packers & Anchor

**Total Tool Length: 80.48**



# DRILL STEM TEST REPORT

## FLUID SUMMARY

Trans Pacific Oil Corp.

**13/15S/18W Ellis Co.**

100 South Main Suite 200  
 Wichita, Kansas  
 67202+3735  
 ATTN: Bryce Bidleman

**Leiker B 1-13**

Job Ticket: 18833

**DST#: 3**

Test Start: 2012.02.08 @ 04:53:00

### Mud and Cushion Information

Mud Type: Gel Chem	Cushion Type:	Oil API:	deg API
Mud Weight: 9.00 lb/gal	Cushion Length: ft	Water Salinity:	ppm
Viscosity: 44.00 sec/qt	Cushion Volume: bbl		
Water Loss: 7.80 in <sup>3</sup>	Gas Cushion Type:		
Resistivity: ohm.m	Gas Cushion Pressure: psia		
Salinity: 4800.00 ppm			
Filter Cake: 1.00 inches			

### Recovery Information

Recovery Table

Length ft	Description	Volume bbl
630.00	Clean Gassy Oil	8.837
0.00	85% Oil 15% Gas	0.000
252.00	Oil cut Gassy Mud	3.535
0.00	10% Oil 15% Gas 75% Mud	0.000
0.00	126' Gas in the pipe	0.000
0.00	Gravity of Oil corrected w as 35	0.000

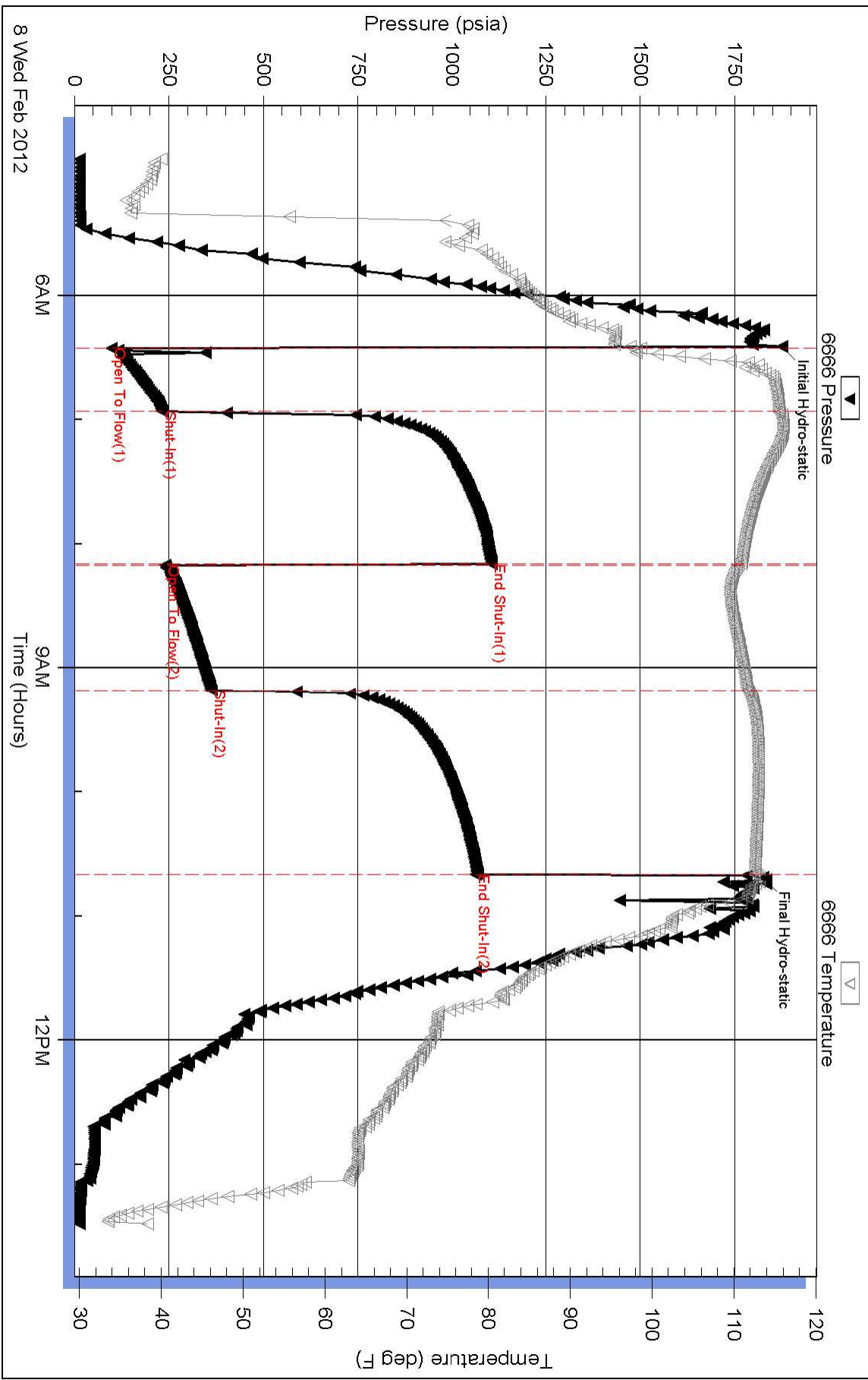
Total Length: 882.00 ft      Total Volume: 12.372 bbl

Num Fluid Samples: 0      Num Gas Bombs: 0      Serial #:

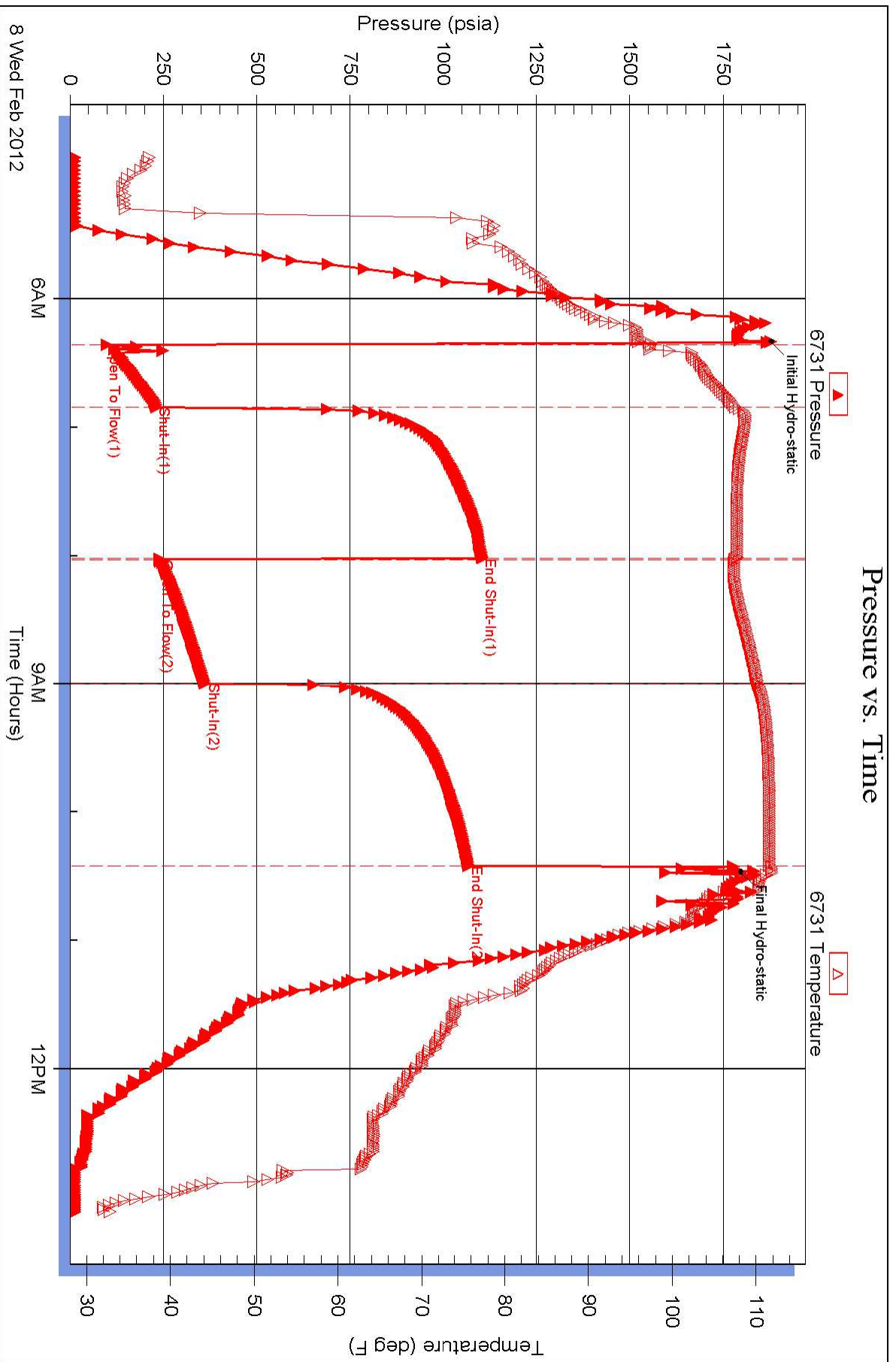
Laboratory Name:      Laboratory Location:

Recovery Comments: Thank You for the work! Hope to see you on the next one! :-)  
 Also take a note that we left half of the bottom packer in the hole!

### Pressure vs. Time



### Pressure vs. Time





**Well:** Leiker B 1-13

**STR:** 13-15S-18W

**Cty:** Ellis

**State:** Kansas

Log Tops:

Anhydrite	1171' (+838) +3'
Topeka	2988' (-979) +1'
Heebner	3253' (-1244) +1'
Lansing	3304' (-1295) flat
BKC	3529' (-1520) +3'
Arbuckle	3583' (-1574) +12'
RTD	3589' (-1580)

**CONFIDENTIAL**

# ALLIED OIL & GAS SERVICES, LLC 056953

Federal Tax I.D.# 20-5975804

REMIT TO P.O. BOX 31  
RUSSELL, KANSAS 67665

SERVICE POINT:

RUSSELL

DATE <u>2-2-12</u>	SEC. <u>13</u>	TWP. <u>15</u>	RANGE <u>18</u>	CALLED OUT	ON LOCATION	JOB START	JOB FINISH
LEASE <u>LEIKER</u>	WELL # <u>B-1113</u>	LOCATION <u>MONITOR 10 4 1/2 S - W 10 T O</u>		COUNTY <u>ELLIS</u>	STATE <u>KS</u>		
OLD OR (NEW) (Circle one)							

CONTRACTOR SHIELD #1 OWNER \_\_\_\_\_

TYPE OF JOB SURFACE

HOLE SIZE 12 7/8 T.D. \_\_\_\_\_

CASING SIZE 8 5/8 DEPTH 1185

TUBING SIZE \_\_\_\_\_ DEPTH \_\_\_\_\_

DRILL PIPE \_\_\_\_\_ DEPTH \_\_\_\_\_

TOOL \_\_\_\_\_ DEPTH \_\_\_\_\_

PRES. MAX \_\_\_\_\_ MINIMUM \_\_\_\_\_

MEAS. LINE \_\_\_\_\_ SHOE JOINT \_\_\_\_\_

CEMENT LEFT IN CSG. 10 FT

PERFS. \_\_\_\_\_

DISPLACEMENT 74.84 bbl

CEMENT

AMOUNT ORDERED 450 SK 3 1/2 2% on

COMMON	<u>450</u>	@	<u>16.25</u>	<u>7312.5</u>
POZMIX		@		
GEL	<u>9</u>	@	<u>21.25</u>	<u>191.25</u>
CHLORIDE	<u>16</u>	@	<u>58.00</u>	<u>931.2</u>
ASC		@		
		@		
		@		
		@		
		@		
		@		
		@		
		@		
HANDLING	<u>475</u>	@	<u>2.25</u>	<u>1068.75</u>
MILEAGE	<u>32 X 475 X .11</u>	@		<u>1672.00</u>
TOTAL				<u>11175.70</u>

EQUIPMENT

PUMP TRUCK CEMENTER Bob Smith

# 409 HELPER TONY

BULK TRUCK DRIVER CHRIS

# \_\_\_\_\_ DRIVER \_\_\_\_\_

REMARKS:

Pumped 450 SK = 105.79 bbl

CMT calculated to SURFACE

CHARGE TO: TRANS PACIFIC OIL

STREET \_\_\_\_\_

CITY \_\_\_\_\_ STATE \_\_\_\_\_ ZIP \_\_\_\_\_

SERVICE

DEPTH OF JOB	<u>1185</u>		
PUMP TRUCK CHARGE			<u>1925.00</u>
EXTRA FOOTAGE		@	
MILEAGE	<u>14</u>	@	<u>70%</u>
MANIFOLD	<u>HEAD 1</u>	@	<u>250%</u>
	<u>body m</u>	@	<u>40%</u>
		@	
TOTAL			<u>2277.00</u>

PLUG & FLOAT EQUIPMENT

<u>8 1/2 AFEU INSERT</u>	<u>1</u>	@	<u>218%</u>	<u>218.00</u>
<u>Rubber plug</u>	<u>1</u>	@	<u>79%</u>	<u>79.00</u>
		@		
		@		
		@		
TOTAL				<u>297.00</u>

To: Allied Oil & Gas Services, LLC.  
You are hereby requested to rent cementing equipment and furnish cementer and helper(s) to assist owner or contractor to do work as is listed. The above work was done to satisfaction and supervision of owner agent or contractor. I have read and understand the "GENERAL TERMS AND CONDITIONS" listed on the reverse side.

SALES TAX (If Any) \_\_\_\_\_

TOTAL CHARGES 13749.70

DISCOUNT \_\_\_\_\_

IF PAID IN 30 DAYS

PRINTED NAME FRANK EGG

SIGNATURE \_\_\_\_\_

**JOB LOG**

**SWIFT Services, Inc.**

DATE 02-09-12 PAGE NO. 1

CHART NO.	TIME	RATE (BPM)	VOLUME (GAL)	PUMPS		PRESSURE (PSI)		DESCRIPTION OF OPERATION AND MATERIALS
				T	C	TUBING	CASING	
	1230							DUPLICATION
								CMT: ODDS STD EA-2
								RTO 3589 SET PIPE 3584 SJ 14/16 ZUSERY 3570 5/2.14*
								CENT 1, 3, 5, 7, 9, 11 BUBBLE
	1440							START GSK, FLOWING
	1630							TAG BOTTOM
	1640							BREAK CIRC W/RLG
	1710						1600	DROP BAR & SET PRESSURE CIRC W/RLG
	1745		7.5					PLUG PH 30, MH 30
	1750	5.0	12				800	500 GAL MUD FRESH
			20					20 1/2" KILL FRESH
			36.5					150 STD EA-2 CMT
								DROP PLUG, WASHOUT PL
		6.0	0				200	START GSK
			51				200	CMT ON BOTTOM
			20.0				650	
			85.0				750	
	1800	4.5	87.1				1400	LAND AUC
								RELEASE <del>BY</del> COMEBACK
	1825						1500	Pumpdown Landings Reverse Key!
	1900							JOB COMPLETE
								THANK YOU!
								DAVE JEWELL, DOUG ZS-HAC
								RECEIVED
								BY _____

WELL NO. 1-13 LEASE LESTER B JOB TYPE CONCRETE TICKET NO. 21190

CUSTOMER TRANS PACIFIC

# GEOLOGIST'S REPORT

DRILLING TIME AND SAMPLE LOG

COMPANY Trans Pacific Oil Corp.  
 WELL # #1-13 Leiker B  
 LOCATION 2310' FNL, 860' FEL  
 SECTION 13 TWP 15S R 18W  
 COUNTY Ellis STATE Kansas  
 CONTRACTOR Shields Drilling Co., Inc.  
 START 1-31-12 COMP 2-9-12  
 RIG 3589' LTD 3590'  
 WELP 2800 TYPE WEL Chemical  
 SAMPLES SAVED FROM 2950 TO TD  
 DRILLING TIME KEPT FROM 2800 TO TD  
 SAMPLES EXAMINED FROM 2950 TO TD  
 GEOLOGICAL SUPERVISOR FROM 2910 TO TD  
 GEOLOGIST ON WELL W. Bryce Bidleman

ELEVATIONS  
 SURFACE 2009  
 CASING 2004  
 Measurements Are A From K.B.  
 CASING SURFACE 8 5/8" @ 1182'  
 PRODUCTION 5 1/2" @ 3584'  
 ELECTRICAL SURVEYS  
Superior Well Services  
RAG

FORMATION TOPS	LOC	SAMPLES	Reference Well: TPO Leiker A' 1-18 70' N of SW NWSW Sec. 18-15S-17W
Anhydrite	1121 +838	+3'	
Base/Anhydrite	1211 +798	-1'	
Topeka	2988 -977	+1'	
Heebner	3253 -1244	+1'	
Lansing	3304 -1295	Flat	
Base Kansas City	3529 -1520	+3'	
Arbuckle	3583 -1574	+12'	
LTD	3590 -1581		

Due to positive structural position and encouraging DST results in the 5 1/2" production casing was set 6' off bottom to further test the Arbuckle in the open hole.

Respectfully,  
*W. Bryce Bidleman*

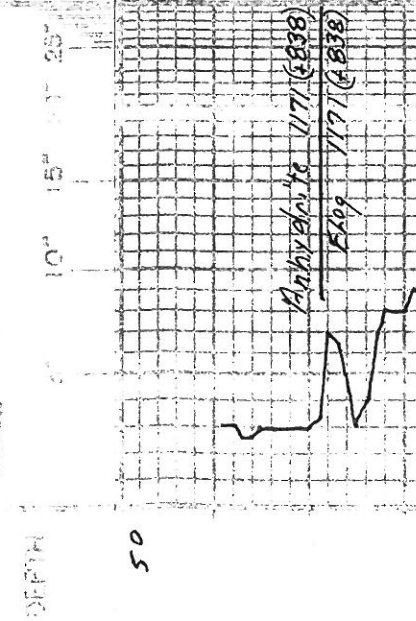
TPO  
 #1-18 Leiker A

## LEGEND

- Anhydrite
- Sandstone
- Shale
- Carbonaceous Shale
- Limestone
- Dolomite

SCALE 1" = 100'

DRILLING TIME IN MINUTES  
 PER FOOT  
 Rate of Penetration Increases



SAMPLE DESCRIPTIONS

REMARKS

Note:  
 8 5/8" casing was set  
 No drill time was rec  
 after 1185' so Base  
 Anhydrite is not se  
 on drill time.



50

Anhydrite 1171 (838)  
Flag 1171 (838)

Note:  
8 5/8" casing was set @  
after 1185' so Base  
Anhydrite is not see  
on drill time.

1200

Base Anhydrite No Sample Top  
Flag 1211 (798)

50  
2800

Tankie 2845 (836)  
Flag - Same

2845  
(836)  
(7250)

2900

50

LM-12 → 6Y Fx Foss TR GLUC,  
SHX, M. RT, MOST PSE.  
SB-6Y

LM-11A

LM-12 → 8Y → 6Y F. Foss,  
DSE, SHX - 6Y → BLK.

SH-6Y → BLK... SOME ARG LY  
1m

Topeka  
2559  
(980)  
147

3000

Topeka 2989 (980)  
E05 2988 (979)

50

3100

50

CA11  
3120  
(1161)

3200

SH-GY → BLK. SOME ARG GY  
LA.

LM-TA → BLK, FX, FOSS, DSE.

LM-TA → GY, FX, FOSS, DSE, ARG  
IN PT, DSE.

LM-CRM → TA, FX, ABOVE FOSS  
FEW VLS. FOSSEMS, RESIST  
DSE, MS.

LM-TA → GY, FX, ABOVE FOSS,  
DSE.

LM-TA → GY, FX, FOSS, CHKY, ARG  
IN PT, FEW VLS. FOSSEMS, MS.

LM-CRM → TA, FX, FOSS, CHKY, IN PT,  
MOST DSE, MS.

LM-TA → FX, ABOVE FOSS, CHKY  
IN PT, MOST DSE.

LM-TA → BLK, FX, DSE, HARD,  
MS.

LM-TA → GY, FX, FOSS, DSE,  
SM. AMT. CHK.

LM-TA → FX, DSE, HARD, CHKY  
IN PT.

LM-TA → GY, TA, FX, FOSS, MOST  
DSE, CHKY, ARG IN PT,  
TR. IN CHT.

LM-TA → GY, TA, FX, FOSS IN PT,  
DSE.

LM-AA  
SH-GRA → GY → BLK, MIC IN PT.

SH-MART → GY → BLK, SILTY IN PT.

LM-TA → FX, DSE, CHKY IN PT.  
SH-AA.

SH-DAG → GY → BLK,  
LM-CRM → TA, FEW FOSS, DSE.

LM-CRM → TA, FX, FEW FOSS,  
DSE, SM. AMT. CHK.  
TR. GY CHT. SH-AA.

LM-CRM → TA, FX, DSE, CHKY IN PT.  
CHI - TA → GY, FOSS, BLK.

LM-CHT-AA.

LM-CRM → TA, FX, MOST DSE, CHKY  
IN PT. FR. AMT. CHT - TA → GY,  
FOSS, SMP.

SH-MAR → GR → GY → BLK.

LM-TA → FX, FOSS, DSE, SMALL  
AMT. CHK. CHT - TA → GY, FOSS,  
SH-AA.

LM-TA → GY, FX, FEW FOSS, DSE,  
CHKY IN PT. MS.

LM-AA SH-GRA → GY → BLK.

LM-TA → GY → TA, FX, CHKY, ARG IN  
PT, FEW SCALLOPS, MOST DSE,  
WK. ODD, No. 5 in SP.

LM-CRM → TA, FX, SCAL. PR. IN PT,  
55. 55. ON BRK, TA FO, WK  
BOOK.

CHKY IN PT.



3100

LM-AA SH-GRN → GY → BLK.

LM-TL → GY → TR, Fx, CHKY, GRN IN PT, FEW SCAT VGS, MOST DSE, WK ODOOR, No Sew in SH.

LM-CRM-TL, Fx, SCAT PR PUPPT, P, SS GAS ON BK, TR FO, WK ODOOR.

LM-CRM → TL, Fx, FOS, PR SCAT PR PUPPT, FEW FOS, WIK ODOOR, No VIB, NO SHAW ODO.

CHT-TL → GY → TR, FOS.

LM-CRM, FA, FR AMT GRN, SPT, FEW FOS.

SH-GY → BLK, TR CARB SH.

SH-BLK, CARB, SPT.

LM-GY, FA, FOS, DSE.

SH-GY → GY → BLK, FR AMT TR GRN CLAYS.

LM-CRM-TL, Fx, DSE, FR AMT CHK, CHT-TL → ORANGE, 1 pc w/ BLK GUS, No FO.

LM-CRM → TL, Fx, FOS, SCAT PR VGS, 1, MP, DSE, FR AMT BK, CHT-AA, N.S.

SH-RD → GR → GY, SILTY WPT.

LM-CRM → TL, Fx, FOS, FEW SCAT VGS, W, End CAL, SS FOS, TR STR, FEW GAS BUB.

LM-AA, N.S.

SH-MAR → W.

FM-TL, F → MX, FEW FOS, OLLY, GO OLLY, FEW FOS, FOST HENS, FR AMT 2nd CAL, G.S FO, G, WIK ODOOR.

LM-TL, Fx, FOS, FEW SCAT VGS, MOSTLY DSE, N.S.

LM-CRM → TL, Fx, FEW FOS, PR VGS, 1, End CAL, IN SOME PT, SS BK FO, SPODY STR, OK ODOOR.

LM-CRM → TL, Fx, FOS, MOSTLY DSE, SCAT PR VGS, FEW FOS, 2nd CAL, W, SS FO, SPODY STR, No ODOOR.

LM-CRM, Fx, FOS, SCAT PR VGS, 1, FOS, MP, CHKY WPT, N.S.

SHKY-RD → BK → BK.

LM-TL, Fx, FOS, SCAT PR VGS, 1, W, SS BK FO, TR, NO ODOOR.

LM-CRM → TL, Fx, FEW FOS, IN PT, SCAT PR PUPPT, VGS, P, SS FO, SPODY STR, No ODOOR.

CHKY WPT.

LM-CRM → TL, Fx, FEW FOS, IN PT, DSE, SAME CHK, N.S.

SH-BK → GR → BK.

LM-WH → CRN, Fx, FEW FOS, IN PT, DSE, FR AMT CHK, N.S.

LM-WH → CRN, Fx, FEW FOS, DSE, CHKY IN PT, TR IN ENT, N.S.

LM-CRM → TL → GY, Fx, DSE.

SH-MAR → GR → GY → BK.

LM-TL → BK → TR → TR, Fx, FEW FOS, DSE, TR IN ENT, SH-AA.

LM-WH → CRN, Fx, FEW FOS, 1, FOS, MP, CHKY WPT, SMALL AMT 2nd CAL, VSS FO, TR SPODY STR, No ODOOR, FR AMT TR CHK.

LM-AA, SS FO, LT, SPODY STR, WIK ODOOR, CHT-AA.

SH-DK → GR → BK.

LM-CRM → TL, Fx, MOSTLY DSE, FR AMT 2nd CAL, FEW VGS, N.S.

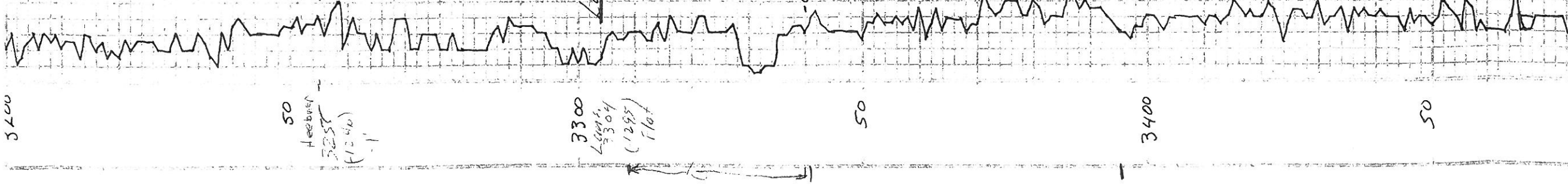
SH-AA, CHT-AA.

Heebner 3255 (-1246)

Flog 3253 (-1244)

Langston 3304 (-1295)

Flog 3302



50  
Heebner  
3255  
(1246)

3300  
Langston  
3304  
(1295)  
Flat

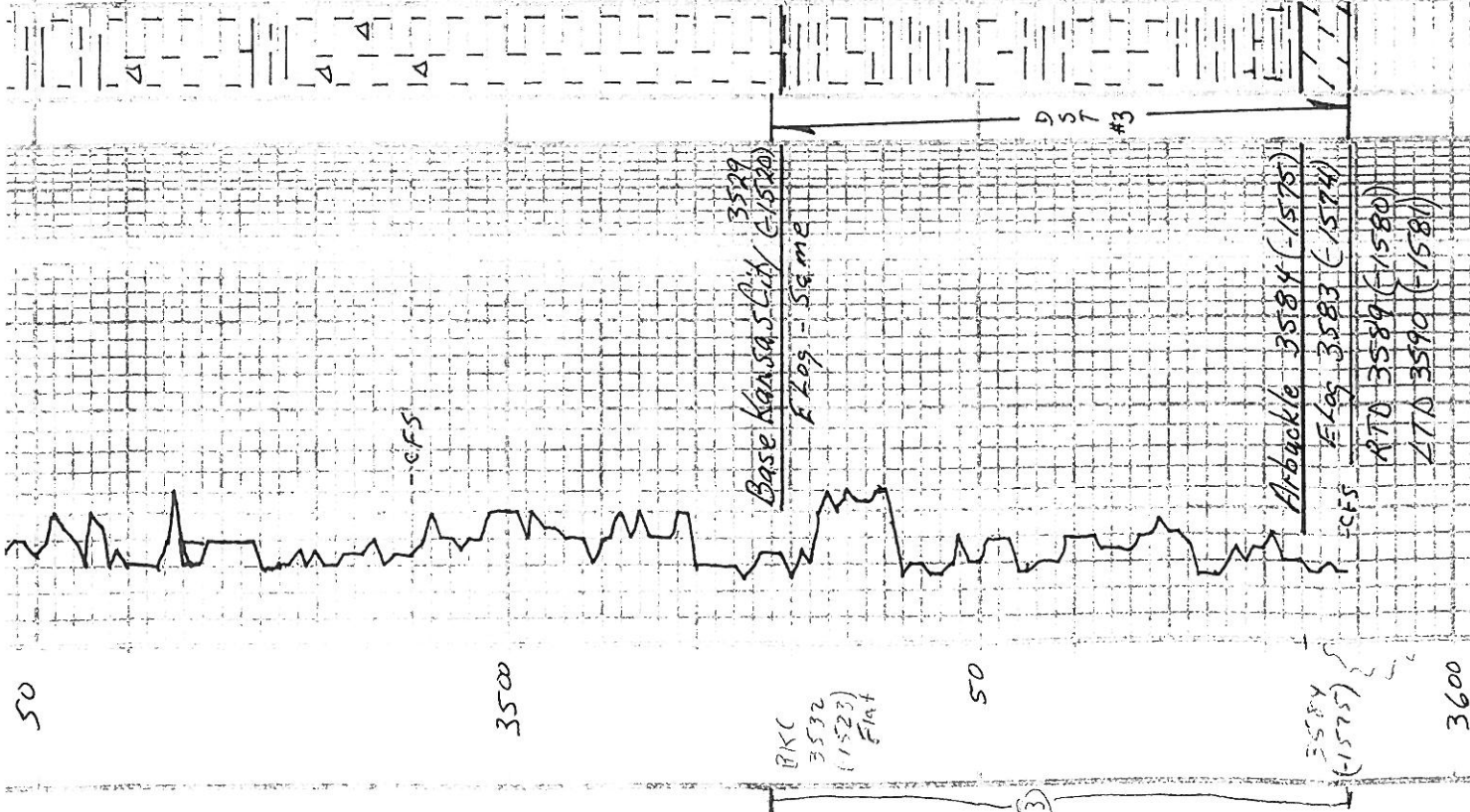
50

3400

50

DST #1 3309' - 3340'  
30-75 - 60-90  
1st Open - Very weak, built  
2nd Open - Very weak, built  
Rec: 310' VS o-spotted  
Note: Packing in shut  
was leaking. Rec  
amount is too high. PR  
are all valid.  
FP: 44-80 / 107-138  
SIP: 858 / 838  
HP: 1690 / 1650

DST #2 3341' - 33:  
30-60 - 40-60  
1st Open - Very Weak, su  
2nd Open - Very Weak, surte  
Died in 40 min.  
Rec: 5' M (No Show)  
FP: 52-53 / 54-56  
SIP: 83 / 68  
HP: 1711 / 1679



LM - CRM → TX, FEW FOSS, FEW  
 SCAT VGS, MOST DSE. CRT-TX,  
 TR-PS, SH, N.S.  
 LM - CRM → TX, FEW, MOSTLY DSE,  
 FR ANT MX, P.M. CAL, FEW VGS,  
 N.S. SH CRT-AM.

LM - CRM → TX, FEW FOSS, FEW  
 SCAT VGS, MOST DSE. CRT-TX,  
 TR-PS, SH, N.S.  
 LM - CRM → TX, FEW, MOSTLY DSE,  
 FR ANT CHK, CRT - CRM, MTH,  
 TR-PS, SH, N.S.  
 LM - CRM → TX, FEW, DSE, SCAT  
 MX 2nd CAL, N.S.

LM - WH → CRM, FEW FOSS, DSE,  
 FR VGS, FEW FOSS, MOSTLY DSE,  
 DSE, FR ANT CLR SPARR-CAL,  
 N.S.

LM - WH → CRM, FEW FOSS, DSE,  
 SH - DK GRD → CRT → BAK.

LM - WH → CRM → TX, FEW FOSS, DSE,  
 SH - AKA.

LM - CRM → TX, FEW FOSS,  
 MOSTLY DSE, FR ANT, MTH,  
 SH - MIA → TX → TX.

SH - MAR → GRM → TX,  
 LM - GRM → TX, FEW FOSS, FEW SD  
 GRAS. IN PT, DSE. N.S.

LM - TX → RD → TX → P.M. Foss,  
 MOST WRT W/ R GLASS, FEW  
 FOSS, DSE. SH - AA.

LM - CRM → TX, FEW FOSS,  
 CRM W/ PL SCAT, FEW VGS,  
 TR-PS, ES DR GRD FO: SPRT  
 DK STN, FR DRK.  
 LM - AA, PS DK GRD FO: SPRT STN,  
 WOODOR. SH - MAR → TX → BAK.

SH → MAR → DK LY → BLK, WEATH.  
 CRM - AA, F → MX, SUCR IN PT, P. FR  
 DOC - TX, F → MX, SUCR IN PT, P. FR  
 VGS, INT - BAK, FEW VGS,  
 6550' SAT STN, GP FLU,  
 GP GRAR.

SAMPLE DESCRIPTIONS

REMARKS

COMPANY Trans Pacific Oil Corp.

LEASE Leiker B #1-13

LOCATION 2310 FNL, 860' FEL DEG 13 NO 15S R10W 18W

COUNTY Ellis STATE Kansas

ELEVATION

K.B. 2009