

GRAND MESA

OPERATING COMPANY

(316) 265-3000
FAX: (316) 265-3455

1700 N. WATERFRONT PARKWAY
BLDG. 600
WICHITA, KANSAS 67208-5514

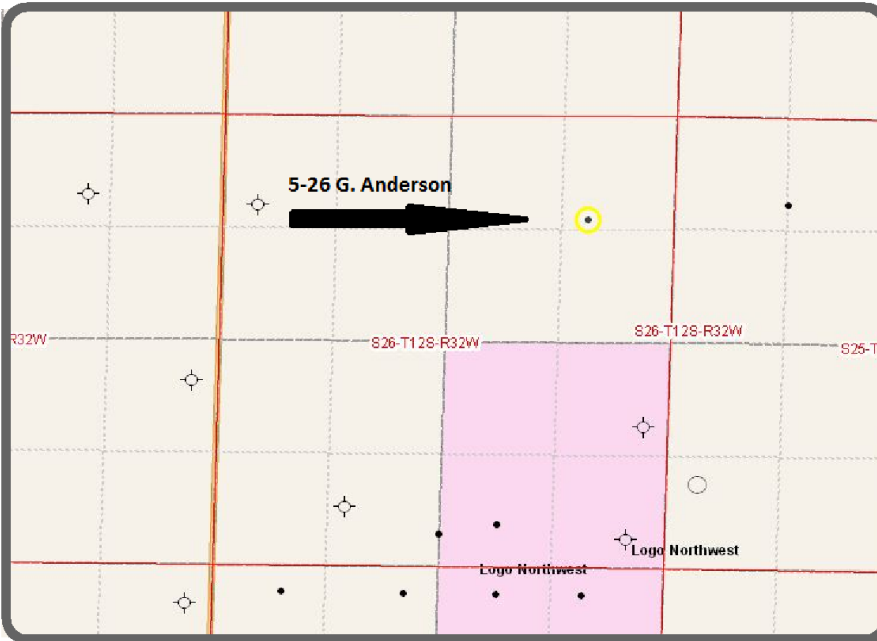
Scale 1:240 (5"=100') Imperial
Measured Depth Log

Well Name: #5-26 G. Anderson
Location: 1235' FNL, 1050' FEL, SECTION 26-12S-32W
License Number: API: 15-109-21075
Spud Date: 02/17/2012
Surface Coordinates: LAT 38.9859789
LONG -100.8356570
Bottom Hole Coordinates: Vertical hole
Ground Elevation (ft): 3011' K.B. Elevation (ft): 3016'
Logged Interval (ft): 3600' To: RTD Total Depth (ft): 4750'
Formation: Mississippi at RTD
Type of Drilling Fluid: Chemical
Region: Logan County
Drilling Completed: 02/25/2012

Printed by MUD.LOG from WellSight Systems 1-800-447-1534 www.WellSight.com

GEOLOGIST

Name: John Goldsmith
Company: John Goldsmith Wellsite Service
Address: 322 Greenwood Ct.
Cheney, KS 67025
316-640-0236



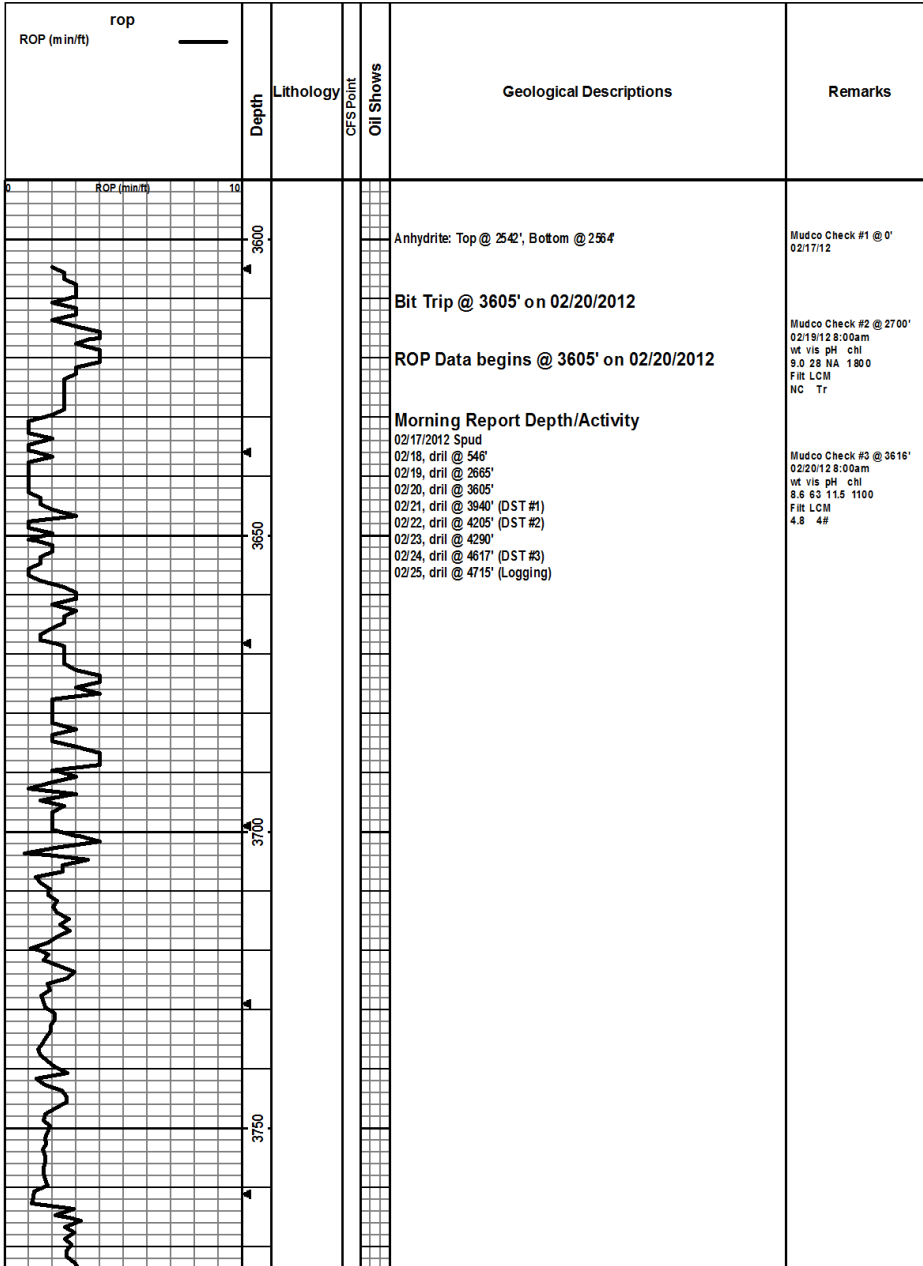
COMMENTS

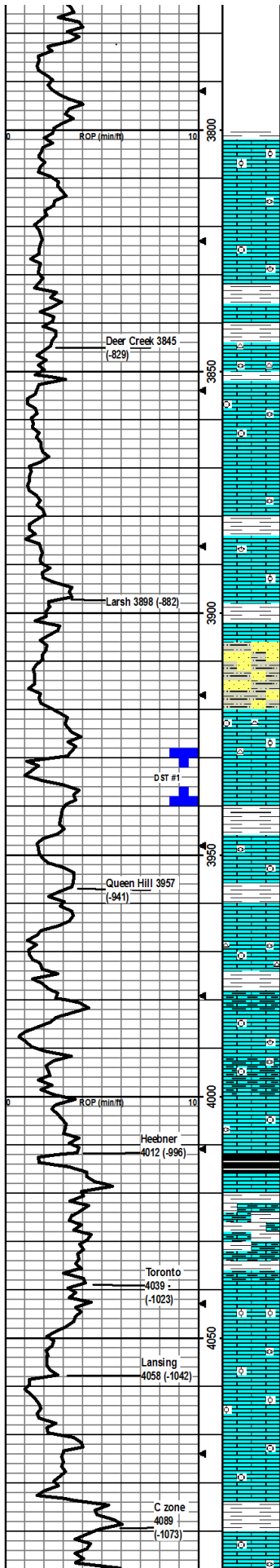
Contractor: Murfin Drilling Company Rig #24
Pusher: Tony Martin
Surface Casing: 6 joints of 8 5/8" set at 214'
Production Casing: 5.25" production casing was installed.
Mud by: MudCo
DST's by: Tribolite Testing
Logs by: Weatherford (DIL, CN-CD, ML, CS)
RTD=4800'
LTD=4802'

FORMATION TOPS

FORMATION	SAMPLE TOPS		LOG TOPS	
	Depth	Datum	Depth	Datum
Queen Hill	3957'	-941	3954'	-938
Heebner Shale	4012'	-996	4008'	-992

Toronto	4039'	-1023	4035'	-1019
Lansing	4058'	-1042	4054'	-1038
Muncie Creek Shale	4204'	-1188	4200'	-1184
Stark Shale	4286'	-1270	4280'	-1264
Hushpuckney Shale	4320'	-1304	4314'	-1298
Marmaton	4380'	-1364	4374'	-1358
Upper Fort Scott	4487'	-1471	4483'	-1467
Little Osage Shale	4506'	-1490	4502'	-1486
Excello Shale	4531'	-1515	4528'	-1512
Johnson Zone	4606'	-1590	4603'	-1587
Morrow	4628'	-1612	4622'	-1606
Mississippian	4656'	-1640	4651'	-1635
RTD	4750'	-1734		
LTD			4746'	-1730





Drill cutting samples at 10' intervals start at 3800'.

LS: tan, fn xln, vry foss, mostly ool, brittle, sm dense, tr-nvp, fw SH: gry/grn/brn, silty, easy-med crush, no cup odr, ns.

LS: tan/lt grn, fn xln, fw foss frags, mostly dense, sm hard, tr-nvp, fw pcs pure chl, fw SH: brn, silty, med crush, no cup odr, ns.

LS: gry/lt tan, fw mott, fn xln, sm foss var, sm dense/hard, tr-nvp, fw pcs chiky, fw SH: gry/brn, silty, soft, no cup odr, ns.

LS: gry/lt tan, fn xln, foss crin/brach/fuss, mostly brittle, fw hard, tr-nvp, sm pure pcs chl, fw SH: gry/brn, silty, no cup odr, ns.

LS: gry/tan, sm mott, fn xln, foss fuss/frags, sm brittle, mostly dense, tr-nvp, abund of chl, 1-2 pcs Chert: wht, opaque, sharp, fw SH: brn/gry, silty, soft, no cup odr, ns.

LS: tan, fn xln, foss fuss/frags/var, mostly brittle fw hard, tr-nvp, fw pcs chiky, fw SH: brn/grn, silty, easy-med crush, fw waxy, no cup odr, ns.

LS: tan/gry, fn xln, foss fuss/frags, mostly brittle, fw pcs w/ fr in foss por, abund pur chl, sm SH: gry/brn, silty, med crush, no cup odr, ns.

LS: lt tan, fn xln, dense, brittle, mostly uniform, tr-nvp, abund pur chl, fw SH: brn, silty, gritty, no cup odr, ns.

LS: tan, fn xln, foss frags, brittle, mostly uniform, tr-nvp, abund chl, fw SH: gry/brn, silty, easy-med crush, no cup odr, ns.

LS: gry/tan, fn xln, sm foss brach/ool, dense, sm hard, tr-nvp, abund pur chl, fw SH: gry/brn, silty, soft, no cup odr, ns.

LS: gry/tan, fn xln, fw foss frags, mostly dense/hard, tr-nvp, fw pcs pur chl, no cup odr, ns.

LS: tan, fn xln, fw foss frags, mostly hard, fw SS: gry, vfn grn, sub-rnd, cal cem, med crush, tr-nvp, no cup odr, ns.

LS: tan/gry, fn xln, fw foss frags, dense, mostly hard, tr-nvp, abund silts: gry/brn, silty/sandy, med crush, muddy, sm SS: gry, vfn grn, arg, muddy, no cup odr, ns.

LS: gry/tan, fn xln, fw foss, mostly dense, hard, tr-nvp, fw pcs, LS: gry, fn xln, fw foss frags pr intrare vug por, scat dul yel fluor, vssfo 1-2pcs, fw Chert tan, sharp, foss, no cup odr.

LS: lt tan, fn xln, sm dense, mostly uniform, fr intbdn-rare vug por, dul yel fluor, fr sto, 4.6 pcs/try in 30' smpl, none-faint cup odr, 60" smpl 3-4 pcs/try, mostly tan, dense, tr-nvp.

SH: gry/grn/brn, silty, med crush, fw waxy, fw LS: crm/lt tan, fn xln, foss frags, brittle, tr-ppt-intbdn por, no cup odr, ns.

LS: gry/lt tan, fn xln, fw foss frags/crin/fuss, mostly dense, sm hard, tr-nvp, fw pcs of pur chl, sm SH: drk gry/grn, silty, fissile, easy crush, no cup odr, ns.

LS: gry/lt tan, micro-fn xln, dense, mostly uniform, tr-nvp, fw SH: drk gry/grn, silty, fw waxy, easy crush, no cup odr, ns.

LS: gry/tan, fn xln, foss crin/fuss/frags, dense, sm hard, tr-nvp, sm Chert: gry, sharp, foss, fw SH: gry/brn, silty, med crush, no cup odr, ns.

LS: gry/tan, mott, fn xln, foss crin/brach, sm profus ool, fw dense/hard, tr-nvp, fw pcs of pur chl, fw SH: gry/brn, silty, med crush, no cup odr, ns.

LS: lt gry/tan, fn xln, foss frags, dense, mostly brittle, tr-nvp, fw pcs w/ drk m in stn, no fluor/no cut, svrl pcs of pur chl, sm SH: drk gry/grn, silty, med crush, sm waxy, no cup odr, ns.

LS: tan/lt gry, fn xln, foss, sm chiky, dense, brittle, tr-nvp, abund SH: drk gry/grn/brn/blk, silty, med crush, sm carb, fw fissile, no cup odr, ns.

LS: gry/lt tan, fn xln, mostly flakey, fw foss crin/frags, sm chiky, tr-nvp, fw SH: gry/brn/blk, silty, med crush, sm carb, no cup odr, ns.

SH: gry/grn, silty, fissile, med crush, sm LS: tan, fn xln, foss, brittle, tr-nvp, fw LS: gry, fn xln, gritty, sandy/grainy, dense/hard, tr-nvp, no cup odr, ns.

LS: lt tan, micro-fn xln, fw foss frags, mostly dense, 1 pcs with vssfo, scat dul yel fluor, shw cut pal blu, abund SH: brn/grn, silty, med crush, fw waxy, no cup odr.

LS: lt tan, fn xln, sm profus ool, mostly dense, fw pcs w/ fr intool por, dul yel fluor, stream cut pal blu, faint cup odr, sso, abund SH: brn/gry, silty, easy-med crush.

LS: lt tan, micro-fn xln, sm foss fuss/frags, mostly dense, tr-nvp, abund pur chl, fw SH: gry/brn, silty, easy-med crush, no cup odr, ns.

LS: lt tan, fn xln, sm profus ool, sm dense, fw pcs w/ fr intool por, abund pur chl, sm SH: gry/grn/brn, silty, easy-med crush, no cup odr, ns.

LS: lt tan, micro-fn xln, fw foss crin/frags, mostly dense, sm hard, tr-nvp, abund SH: gry/grn/brn, silty, sm soft, mostly med crush, no cup odr, ns.

LS: lt tan, micro-fn xln, fw foss frags, dense, sm brittle, mostly uniform, tr-nvp, fw pcs of pur chl, fw SH: gry/brn, silty, fissile, med crush, no cup odr, ns.

SH: brn/gry, silty, easy-med crush, mostly fissile, fw LS: tan, fn xln, sm foss, mostly dense, tr-nvp, no cup odr, ns.

LS: tan, fn xln, sm foss fuss/crin, mostly ool, mostly brittle, fw dense, rare tr intool por, fw SH: gry/brn, silty, fissile, no cup odr, ns.

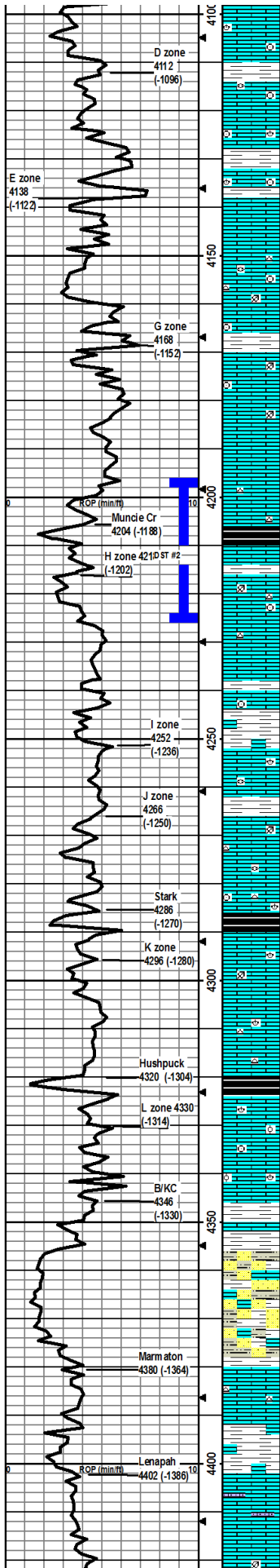
DST1) 3930-3940

3045/4560
1st) Wk Surface built to 7"
2nd) Wk Surface built to 8.5"
IF 16-88#
ISIP 116 4#
FFP 91-146# F SIP
113 7#
HP 1879-1845#
Recvd: 290' MW w/ oil scum
and gassy odor on tool

CFS @ 3640'
30"/60"

Mudco Check #4 @ 3940'
02/21/12 9:20am
wt vis pH chl
8.9 54 10.5 1500
Filt LCM
5.5 6#

CFS @ 4066'
30"/60"



LS: tan, fn xln, foss crin/brach, mostly dense, brittle, tr-nvp, svrl pcs pur chlk, fw SH: brn/grn, silty, soft, no cup odr, ns.
 LS: tan/lt tan, micro-fn xln, foss fuss/crin/frags, dense, sm brittle, tr-nvp, svrl pcs pur chlk, fw SH: gry/brn, silty, soft, no cup odr, ns.
 LS: gry/lt tan, fn xln, foss crin/brach, dense, hard, mostly chiky, mostly uniform, tr-nvp, fw pcs pur chlk, no cup odr, ns.
 LS: gry/lt tan, micro-fn xln, fw foss crin/brach/ool, mostly dense, hard, mostly uniform, tr-nvp, fw pcs pur chlk, fw pcs with drk min stns, no fluor/no cut, fw SH: gry/grn, silty, easy-med crush, no cup odr, ns.
 LS: lt gry/tan, micro-fn xln, mostly dense, sm hard, uniform, tr-nvp, fw pcs pur chlk, no cup odr, ns.
 LS: lt tan/tan, fn xln, sm foss fuss/crin/plants, mostly dense, tr-nvp, fw Chert: wht opaque, sharp, fw SH: drk gry/brn, silty, soft, no cup odr, ns.
 LS: tan/lt gry, fn xln, sm foss plants/crin, sm ool, mostly dense, tr-nvp, fw pcs chlk, fw SH: gry/brn, silty, med crush, fissile, no cup odr, ns.
 LS: lt tan/crm, micro-fn xln, vry fw foss frags, mostly dense, uniform, tr-nvp, fw SH: gry/grn/brn, silty, sm fissile, easy-med crush, no cup odr, ns.
 LS: lt tan/crm, micro-fn xln, vry fw foss frags, dense, mostly brittle, mostly uniform, tr-nvp, fw SH: gry/grn/grn, silty, fissile, easy-med crush, no cup odr, ns.
 LS: lt gry/lt tan, fn xln, mostly dense, mostly hard, fw pcs chiky, tr-nvp, fw SH: gry/grn/brn, silty, fissile, easy-med crush, no cup odr, ns.
 SH: gry/drk gry, silty, fissile, mostly carb, med crush, fw LS: tan, fn xln, flakey, dense, hard, tr-nvp, fw Chert wht, opaque, foss, no cup odr, ns.
 LS: tan, fn xln, foss crin/brach, sm chiky, sm dense/hard, tr-nvp, 1-2 pcs w/ slight edge stns, scat wk fluor, no cut, fw Chert wht, opaque, foss, no cup odr, abund SH: gry/grn/drk gry, silty, med crush, fw carb.
 LS: crm/lt tan, fn xln, fw foss frags, mostly chalky, tr-nvp, 2-3 pcs w/ slight patchy edge stns, dul yel fluor, sl wk cut, no cup odr, Chert: gry/brn, foss.
 LS: gry/lt tan, fn xln, dense, mostly brittle, uniform, tr-nvp, fw pcs of pur chlk, fw SH: gry/brn, silty, fissile, med crush, no cup odr, ns.
 LS: tan, fn xln, foss brach/frags, mostly dense, fw flakey, tr-nvp, fw pcs pur chlk, sm SH: gry/brn, silty, med crush, no cup odr, ns.
 LS: tan, fn xln, foss crin frags, mostly dense, tr-nvp, fw pcs pur chlk, abund SH: gry/olive, silty, sm gritty, med crush, no cup odr, ns.
 LS: tan/lt tan, fn xln, fw foss brach/fuss, mostly dense, fw pcs chiky, tr-nvp, sm SH: gry/brn/grn, silty, easy-med crush, no cup odr, ns.
 LS: lt tan/lt gry, fn xln, vry fw foss, mostly dense sm chiky pcs, fw hard, tr-nvp, fw SH: gry/grn, silty, soft, no cup odr, ns.
 LS: tan, fn xln, vry fw foss, mostly dense, sm brittle, tr-nvp, fw pcs pur chlk, fw Chert: wht, foss brach/frags, no cup odr, ns.
 LS: lt gry/tan, fn xln, sm foss brach/frags, sm flakey, mostly hard, tr-nvp, fw pcs of chlk, abund of SH: gry/grn/blk, silty, med crush, sm carb, no cup odr, ns.
 LS: gry/tan, fn-crs xln, sm foss brach/frags, sm flakey, tr-nvp, 1-2 pcs w/ slight edge stains, wk dul yel fluor, stream cut pal bliu, vsgfo, fw SH: gry/drk gry, silty, med crush, no cup odr.
 LS: tan/lt gry, fn xln, vry fw foss frags, flakey, mostly hard, tr-nvp, fw pcs pur chlk, fw SH: gry, silty, soft, no cup odr, ns.
 LS: gry/tan, fn xln, sm foss, sm flakey, mostly hard, tr-nvp, fw pcs of chlk, fw Chert: gry, opaque, sharp, fw SH: gry/grn/blk, silty, med crush, sm carb, no cup odr, ns.
 LS: gry/tan, fn xln, foss brach/ool, sm flakey, mostly hard, tr-nvp, fw pcs w/ drk stns, does no fluor/no cut, sm SH: gry/drk gry, silty, easy-med crush, no cup odr, ns.
 LS: gry/tan, sm mott, fn xln, foss brach/crin/ool, tr-nvp, sm pcs w/ drk min stns, no fluor/no cut, fw pcs of pur chlk, no cup odr, ns.
 LS: tan, fn xln, vry fw foss frags, mostly dense/brittle, mostly uniform, tr-nvp, fw pcs of pur chlk, no cup odr, ns.
 SitStn: brn, soft, muddy, sm SS: lt brn, vln grn, sub rnd, arg, med crush, fw SH: grn/grn, silty, soft, sm LS: gry/tan, fn xln, foss, tr-nvp, no cup odr, ns.
 SitStn: brn, soft, muddy, sm SS: lt brn, vln grn, arg, med-hard crush, sm SH: gry/grn, silty, waxy, easy-med crush, fw LS: gry/tan, sm mott, fn-crs xln, foss, tr-nvp, no cup odr, ns.
 SitStn: brn, soft, muddy, sm SS: lt brn, vln grn, arg, med crush, abund SH: drk gry/grn/brn, silty, fissile, med crush, fw LS: tan, fn xln, foss, brittle, tr-nvp, no cup odr, ns.
 LS: tan/lt tan, fn-med xln, flakey, sm brittle, mostly uniform, tr-nvp, fw pcs pur chlk, fw Chert: gry, sharp, sm SH: gry/brn, silty, med crush, no cup odr, ns.
 LS: tan, fn xln, fw foss frags, sm flakey, sm hard, tr-nvp, abund SH: gry/brn, silty, fissile, med crush, no cup odr, ns.
 LS: gry/tan, fn xln, sandy/gritty, sm flakey, mostly dense, med crush, tr-nvp, sm SH: gry/grn, silty, easy-med crush, no cup odr, ns.
 SH: gry/grn, silty, sm gritty, fissile, easy-med crush, sm SitStn: gry/brn, soft, fw LS: gry, fn xln, dense, hard, no cup odr, ns.

DST2) 4196-4225

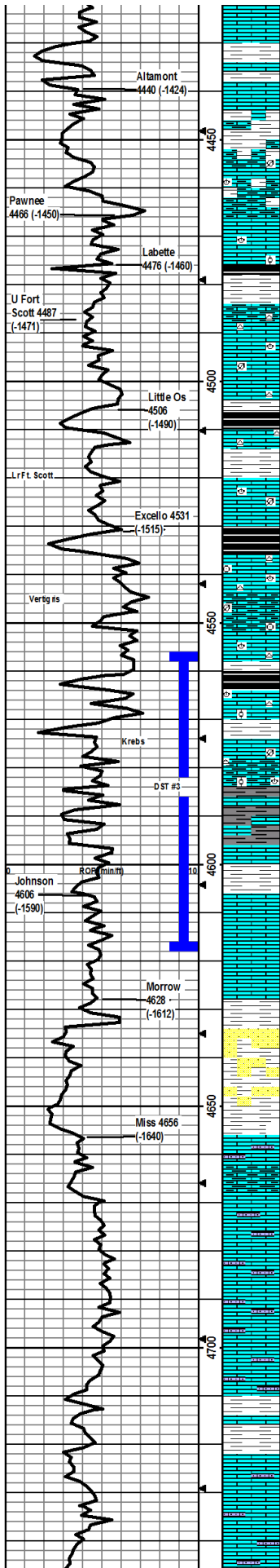
030303030
 1st) WK Surface died in 10"
 2nd) WK Surface died in 1"
 IFF 25-27#
 ISIP 729# FSP
 FFP 15-20# FSP
 705#
 HP 2038-2013#
 Recvd: 1' of Mud w/ few oil spots

CFS @ 4225'
 30"/60"

Mudco Check #5 @ 4205'
 0222/12 9:30am
 wt vis pH chl
 8.9 55 10.0 2000
 Filt LCM
 6.4 5#

Mudco Check #6 @ 4280
 0223/12 5:15am
 wt vis pH chl
 8.2 59 9.5 3000
 Filt LCM
 7.6 4#

CFS @ 4313'
 30"/60"



LS: tan, fn xln, fw foss frags, mostly dense, fw flakey, tr-nvp, abund SH: gry/grn/brn, silty, easy-med crush, no cup odr, ns.

LS: tan/lt tan, fn xln, flakey, mostly hard, sm chiky, tr-nvp, sm SH: gry/drk gry/grn, silty, sm fissile, easy-med crush, no cup odr, ns.

LS: tan/lt tan, fn-med xln, mostly flakey, sm fairly hard, fw chiky, tr-nvp, abund SH: gry/grn/purp, silty, sm fissile, med crush, no cup odr, ns.

LS: lt gry/tan, fn xln, fw foss frags/brach, sm flakey, fw chiky, rare ppt-intxln por, fw SH: gry/brn, silty, med crush, no cup odr, ns.

LS: gry/tan, fn xln, mostly flakey, hard, tr-nvp, fw pcs of pur chik, sm SH: gry/grn, silty, med crush, fw Slt Stn: gry/brn, silty, vry soft, no cup odr, ns.

SH: gry/grn/blk, silty, fissile, med crush, sm carb, fw LS: tan/gry, sm mott, fn-med xln, fw foss brach/frags/ool, mostly hard, tr-nvp, no cup odr, ns.

LS: tan, fn xln, mostly dense, mostly uniform, fw pcs chiky, tr-nvp, svrl pcs Chert wht, opaque, sharp, fw SH: gry/brn, silty, easy crush, no cup odr, ns.

LS: tan, fn xln, fw foss frags/brach, fw ool, mostly flakey, tr-nvp, fw pcs Chert wht/gry, fw foss, sharp, no cup odr, ns.

SH: gry/blk, silty, med crush, m oostly carb, fw LS: lt tan, fn xln, sm hard, tr-nvp, fw Chert: wht, opaque, sharp, no cup odr, ns.

LS: lt gry/lt tan, fn xln, mostly dense, brittle, tr-nvp, fw pcs of pur chik, fw Chert: wht, opaque, sharp, abund SH: gry/blk, silty, mostly carb, no cup odr, ns.

LS: lt gry/lt tan, fn xln, foss brach/frags, dense, sm brittle, tr-nvp, fw pcs of pur chik, sm SH: gry/grn/blk, silty, med crush, mostly carb, no cup odr, ns.

LS: gry/tan, fn xln, foss frag/brach, vry ool, dense, brittle, tr-nvp, fw pcs chiky, fw Chert wht, opaque, sharp, abund SH: gry/drk gry, silty, easy-med crush, sm carb, no cup odr, ns.

LS: gry/tan, fn xln, foss brach/crin, fw ool, mostly hard, tr-nvp, fw Chert: gry, foss, sharp, svrl pcs SH: gry/blk, silty, med crush, fw carb, no cup odr, ns.

LS: tan, fn xln, foss brach/crin/frags, fw dense/hard, mostly brittle, sm chiky, tr-nvp, fw SH: gry/grn/purp, silty, easy-med crush, 1-2 pcs Chert: gry, sharp, no cup odr, ns.

LS: lt tan/tan, micro-fn xln, foss brach/frags, fw ool, mostly dense/hard, tr-nvp, svrl pcs Chert: gry, semi-trans, fw pcs SH: gry/drk gry/gry, silty, easy-med crush, sm carb, no cup odr, ns.

LS: lt tan, micro-fn xln, vry fw foss, mostly dense, fw brittle, sm chiky, tr-nvp, fw Chert: gry, sharp, fw SH: gry/grn/brn, silty, fissile, easy-med crush, no cup odr, ns.

LS: gry/tan, fw mott, fw foss brach/frags, fw ool, mostly hard, fw chiky, tr-nvp, sm SH: gry/brn, silty, fissile, med crush, no cup odr, ns.

LS: lt gry/tan, fn xln, fw foss var/frags, sm chiky, mostly dense rare ppt-intxln por, sm SH: gry/grn/purp, silty, soft, no cup odr, ns.

LS: lt tan, fn xln, mostly dense, fw pcs chiky, scat fr vug por, svrl pcs w/ spot stains in ppt-tmxln, dul yel fluor, stream cut wht/pai blu, slight-frsto, 6-8 pcs/try, slight cup odr.

30" Stop sample LS: m uch like above, more fr-gd vug por, 8-10 pcs/try, fr sfo, fr cup odr, vry fw pcs in 60" sm pl.

LS: lt tan/tan, fn xln, foss brach/frags, sm brittle, sm chiky, tr-nvp, fw SH: gry/grn, silty, easy-med crush, fw fissile, no cup odr, ns.

SH: gry/grn/drk gry, silty, fissile, sm waxy, med crush, fw Chert wht, opaque, sharp, sm SS: wht, fn grns, sub-rnd, sil cem, med-hard crush, tr intgrn por, no cup odr, ns.

SH: drk gry/gry/grn/brn, silty, easy-med crush, m oostly fissile, fw SS: wht, fn grn, sub-rnd, sil cem, med crush, tr int-grn por, no cup odr, ns.

SH: brn/gry/grn, silty, med crush, fw fissile, sm LS: oliv/tan, micro-fn xln, mostly dense, mostly hard, fw pcs lght colored and flakey, tr-nvp, no cup odr, ns.

LS: oliv/gry/tan, fn xln, mostly dense/hard, fw brittle, fw pcs gritty/sandy, tr-nvp, sm SH: gry/grn/oliv/brn, silty, med crush, no cup odr, ns.

LS: tan/lt tan, fn xln, foss frags, sandy/gritty, sm brittle, tr-nvp, fw SH: brn/gry/grn, silty, easy-med crush, vry fw Chert oliv-gry, semi-trans, sharp, no cup odr, ns.

LS: lt tan, fn xln, gritty/sandy, m oostly brittle, mostly uniform, tr-nvp, vry fw SH: brn/gry/grn, silty, easy-med crush, no cup odr, ns.

LS: lt tan/crm, fn xln, gritty/sandy, mostly brittle mostly uniform, tr-nvp, 1 pc w/ spotty brn stains, does not cut, sm SH: gry/brn/grn, silty, fissile, med crush, no cup odr, ns.

LS: crm/lt tan, fn xln, sandy/gritty, mostly brittle, fw pcs chiky, tr-nvp, abund SH: gry/grn, silty, fissile, med crush, no cup odr, ns.

SH: brn/gry, silty, fissile, med crush, sm LS: crm/lt tan, fn xln, sandy/gritty, m oostly brittle, tr-nvp, no cup odr, ns.

SH: brn/gry/grn, silty, sm fissile, easy-med crush, fw LS: crm/lt tan, fn xln, sandy/gritty, m oostly brittle, vry fw hard, no cup odr, ns.

SH: brn/gry/grn, silty, fissile, easy-med crush, sm LS: lt tan, fn xln, sm sandy/gritty, brittle, vry fw dense, hard, tr-nvp, no cup odr, ns.

LS: lt tan, fn xln, sm sandy/gritty, sm brittle, fw dense/hard, tr-nvp, abund SH: arv/brn/orn, silty, med crush, no cup odr, ns.

DST3) 4556-4617

30456090
1st) BOB 3"
2nd) BOB 5.5"
IFP 79-137#
ISIP 959#
FFP 397-588# FSIIP
903#
HP 2210-2205#
Recvd: 380 GIP, 170 CO,
1587 GMCO

Mudco Check #7 @ 4617
02/24/12 7:30am
wt vis pH chl
9.4 57 10.5 3000
FIR LCM
4.8 4#

CFS @ 4617
30"/60"

Mudco Check #8 @ 4695
02/25/12 3:36am
wt vis pH chl
9.4 59 10.0 4000
FIR LCM
6.4 4#

