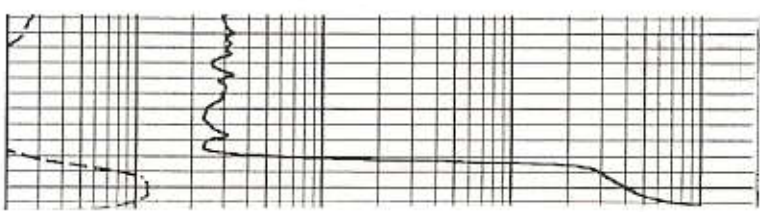
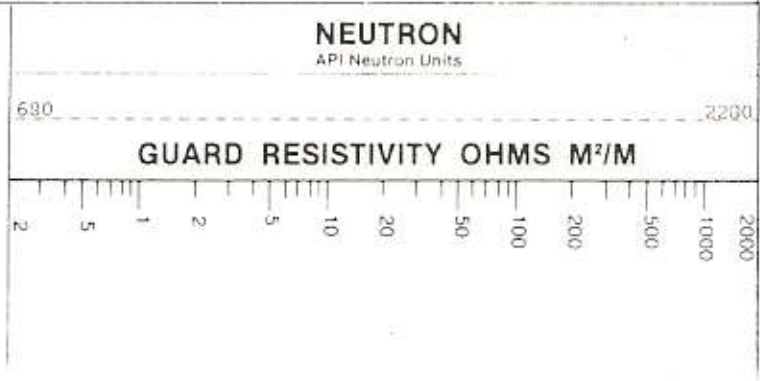
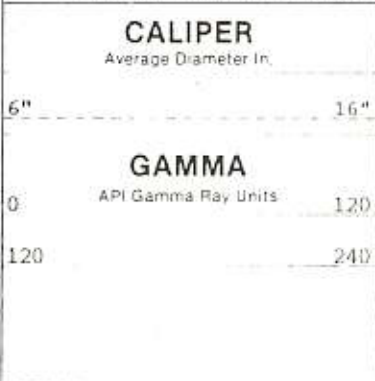
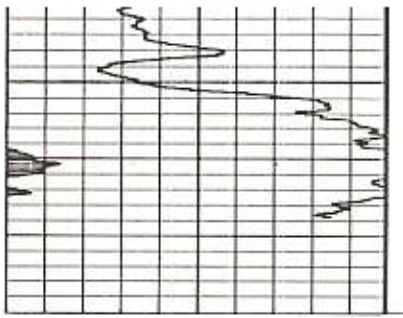


WT**WIRE-TECH****RADIATION GUARD
LOG**

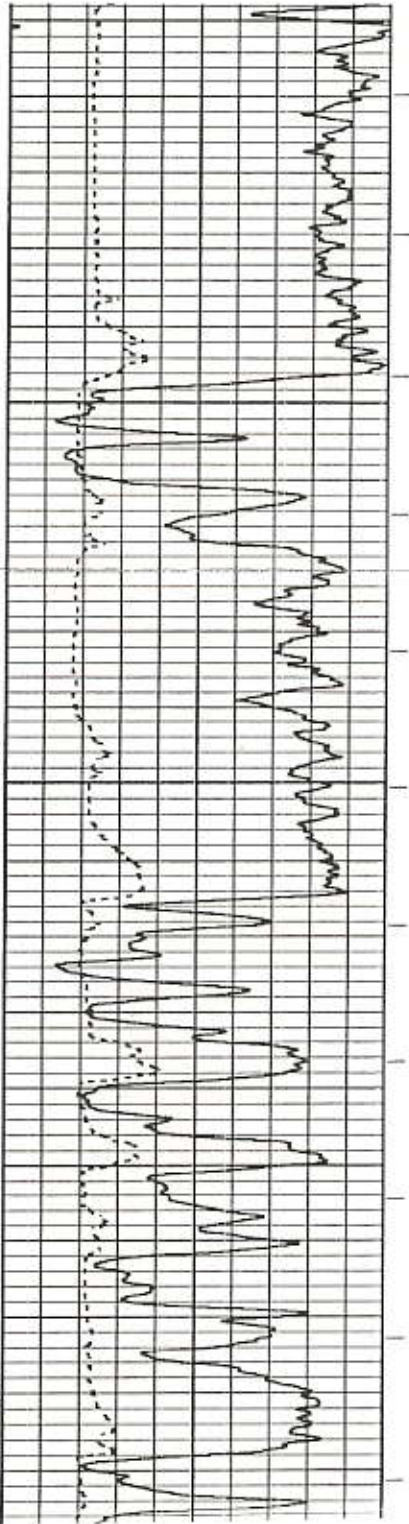
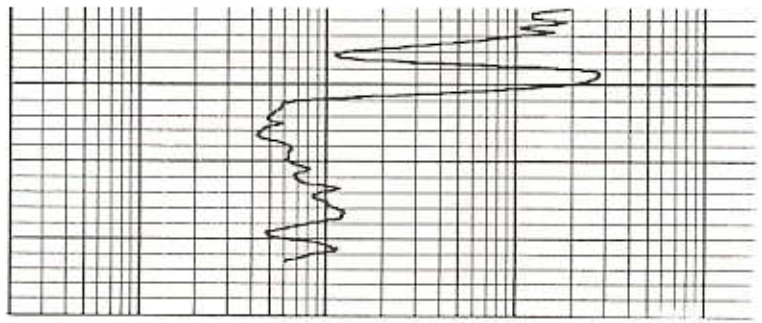
COMPANY JOHN ROY EVANS WELL #1 SCHNEPPERS FIELD COUNTY BARREN STATE KENTUCKY Location 291° S @ 53° W @ W/2 Twp 16S Sec. 32 Twp 16S Rge 11W		Permanent Datum GROUND LEVEL Elev. 1921' Log Measured From KELLY BUSHING 5 Ft Above Perm Datum Drilling Measured From KELLY BUSHING	Elev. KB 1926' DE 1921' GL 1921'
Date 5-26-91 Run No ONE Depth—Driller 3416' Depth—Wire Tech 3418' Bt. Log Inter. 3417' Top Log Inter. 2400' Casing—Driller 8 5/8" @ 478' Casing—Wire Tech Bit Size 7 7/8" Type Fluid in Hole CHEMICAL MUD CHLORIDES 6400 ppm Dens. 1 Visc. 9.3 145 pH 1 Fluid Loss 9.5 110.4 ml Source of Sample FLOWLINE R _{me} @ Meas. Temp. .95 @ 68 °F .56 @ 107 °F R _{log} @ Meas. Temp. .51 @ 68 °F .40 @ 107 °F R _{me} @ Meas. Temp. 1.19 @ 68 °F .78 @ 107 °F Source R _{me} @ R _{log} CHARTS 1 R _{me} @ BHT .56 @ 107 °F Time Since Circ 1.5 HOURS Max Rec Temp 107°F @ T.D. Equip. Location GREAT BEND KANSAS Recorded By W. CURTIS Witnessed By J.C. MUSGROVE	Fold Here THANK YOU FOR USING WIRE-TECH SERVICES OF GREAT BEND (316) 792-6630 Crew W. CURTIS, L. NOVOTNE, B. REEVES. Service Ticket No. 5400 Truck No. 60 Tool Serial No. 1-183-97-100 A.P.I. # 15-009-24,473 SOURCE AM-DE 5 CURIES NEUTRON SWN		

In the interpretation of Logs, Wire-Tech employees will offer their best judgment as to the correct interpretation. Since all interpretations are opinions based on measurements, Wire-Tech does not guarantee the accuracy of these opinions and is not responsible for any loss, cost, damages or expenses incurred by the customer as a result of opinions or interpretations made by Wire-Tech personnel.



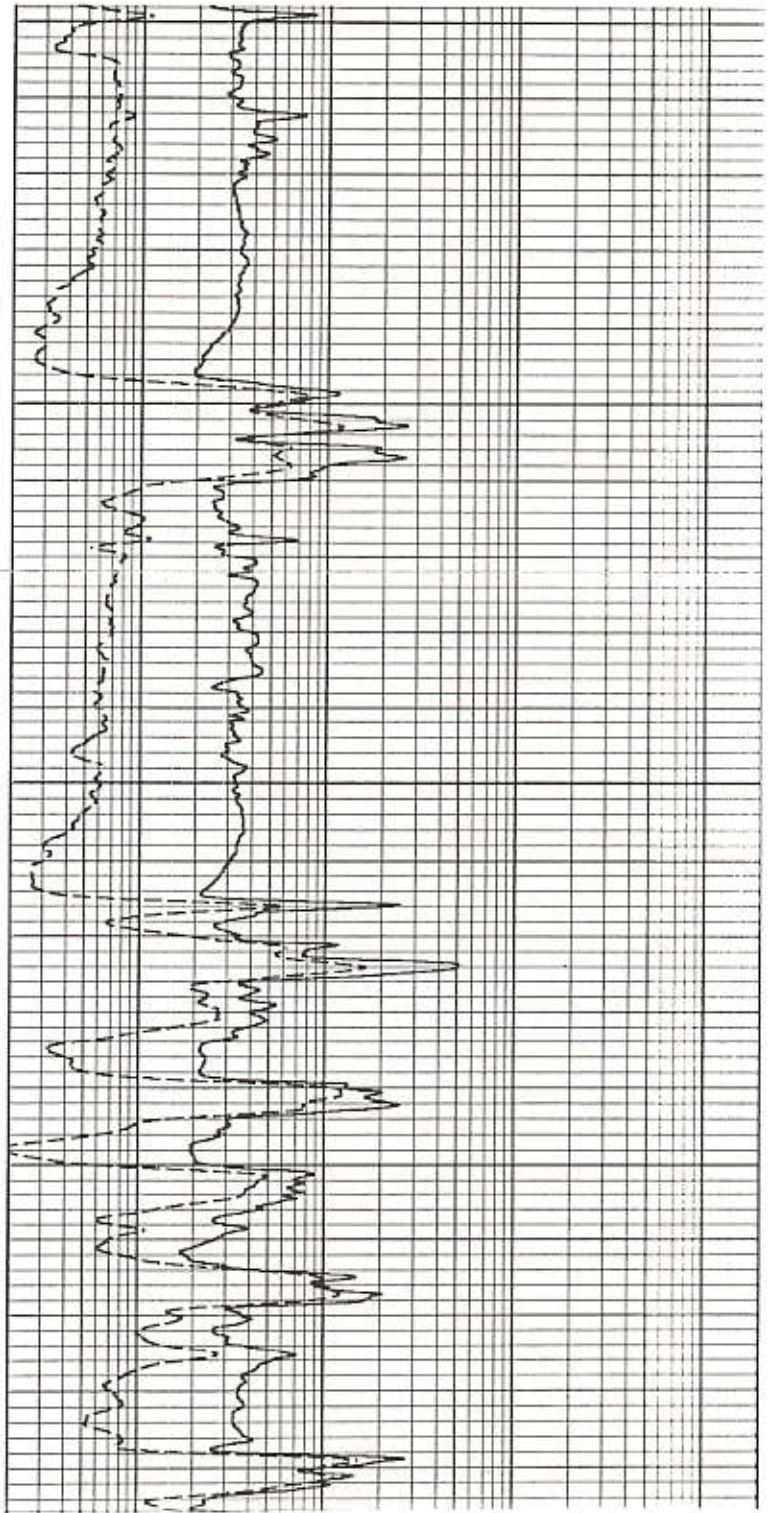


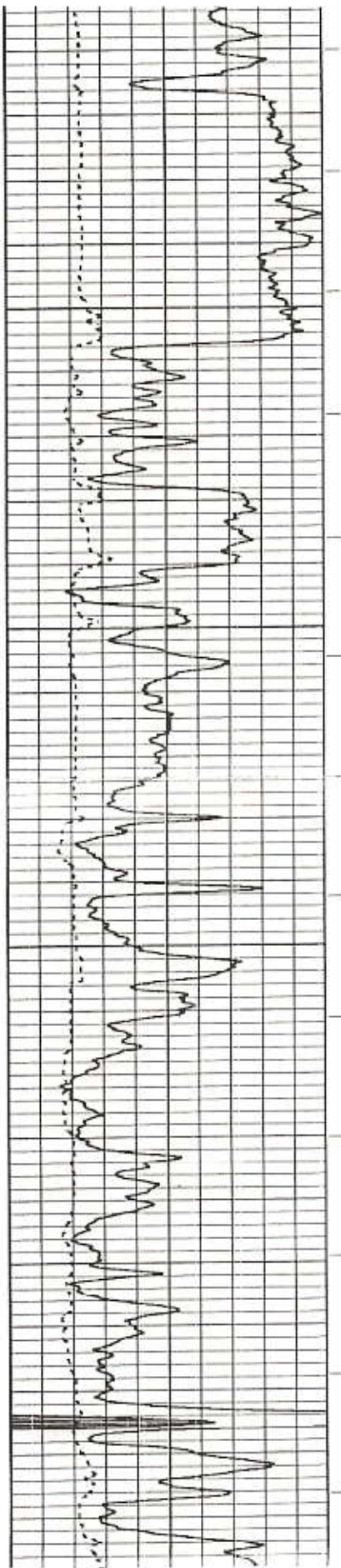
800



2400

2500





2700

2600

