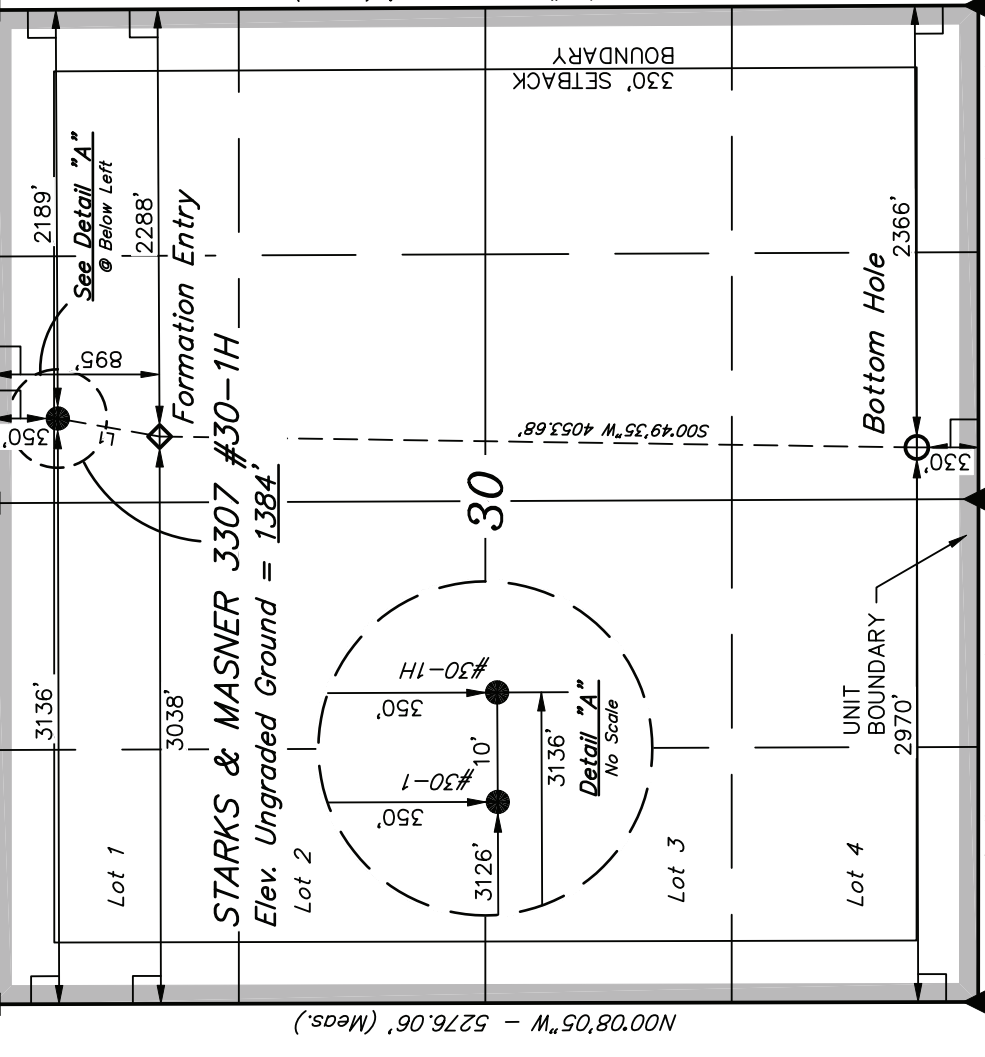


# R 8 W T33S, R7W, 6th P.M.

**R 7 W** Nail in Asphalt  
NAD 27 Kansas South  
N: 176855.99  
E: 2107849.22  
N89°59'19"E - 2684.32' (Meas.)

Nail in Asphalt  
NAD 27 Kansas South  
N: 176867.71  
E: 2110533.65  
N89°58'53"E - 2640.03' (Meas.)

Nail in Asphalt  
NAD 27 Kansas South  
N: 176879.58  
E: 2113173.60



**LEGEND:**  
 ◻ = 90° SYMBOL  
 ● = PROPOSED WELL HEAD.  
 ▲ = SECTION CORNERS LOCATED.

LINE	BEARING	LENGTH
L1	S10°02'39"W	553.98'

LINE	BEARING	LENGTH
NAD 83 (#30-1H TARGET BOTTOM HOLE)		
LATITUDE	= 3708°57.68"	(37.149356)
LONGITUDE	= 9807°12.31"	(98.120086)
NAD 27 (#30-1H TARGET BOTTOM HOLE)		
LATITUDE	= 3708°17.61"	(37.138225)
LONGITUDE	= 9807°12.31"	(98.120086)
NAD 27 (#30-1H FORMATION ENTRY)		
LATITUDE	= 3708°57.68"	(37.149356)
LONGITUDE	= 9807°11.59"	(98.119886)
NAD 27 (#30-1H FORMATION ENTRY)		
LATITUDE	= 3709°02.99"	(37.150831)
LONGITUDE	= 9807°09.17"	(98.119214)
STATE PLANE NAD 27 (KANSAS SOUTH)		
N	= 175974.30	E: 2110893.08
NAD 83 (#30-1H FORMATION ENTRY)		
LATITUDE	= 3708°57.68"	(37.149356)
LONGITUDE	= 9807°11.59"	(98.119886)
NAD 27 (#30-1H SURFACE LOCATION)		
LATITUDE	= 3709°03.08"	(37.150856)
LONGITUDE	= 9807°10.40"	(98.119556)
STATE PLANE NAD 27 (KANSAS SOUTH)		
N	= 176520.20	E: 2110987.43

## SGOMI

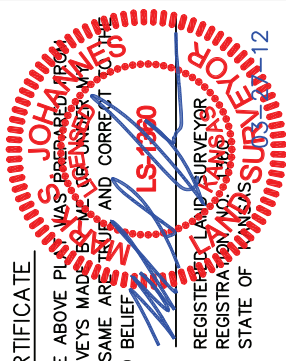
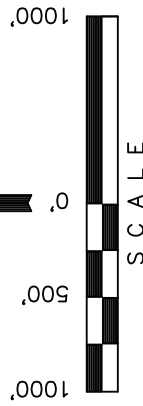
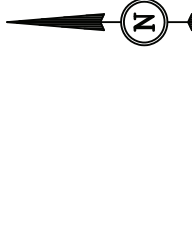
Well location, STARKS & MASNER 3307 #30-1H, located as shown in the NW 1/4 NE 1/4 of Section 30, T33S, R7W, 6th P.M., Harper County, Kansas.

### BASIS OF ELEVATION

SPOT ELEVATION LOCATED AT THE NORTHEAST CORNER OF SECTION 22, T33S, R7W, 6th P.M. TAKEN FROM THE ANTHONY, QUADRANGLE, KANSAS, HARPER COUNTY, 7.5 MINUTE QUAD (TOPOGRAPHIC MAP) PUBLISHED BY THE UNITED STATES DEPARTMENT OF THE INTERIOR, GEOLOGICAL SURVEY. SAID ELEVATION IS MARKED AS BEING 1348 FEET.

### BASIS OF BEARINGS

BASIS OF BEARINGS IS A G.P.S. OBSERVATION.



### CERTIFICATE

THIS IS TO CERTIFY THAT THE ABOVE PLAT WAS PREPARED FROM FIELD NOTES OF ACTUAL SURVEYS MADE BY ME OR UNDER MY SUPERVISION AND THAT THE SAME ARE TRUE AND CORRECT TO THE BEST OF MY KNOWLEDGE AND BELIEF.

5/8" Rebar, 0.8'  
Below Ground, in  
Gravel Road  
Intersection  
NAD 27 Kansas South  
N: 171601.08  
E: 2113220.79

REVISED: 03-23-12  
REVISED: 03-07-12

## UNTAH ENGINEERING & LAND SURVEYING

85 SOUTH 200 EAST - VERNAL, UTAH 84078  
(435) 789-1017

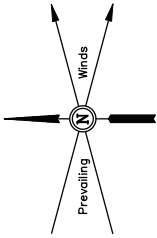
SCALE	1" = 1000'	DATE SURVEYED:	09-13-11	DATE DRAWN:	02-09-12
PARTY	L.S. K.H. C.C.	REFERENCES	G.L.O. PLAT		
WEATHER	WARM	FILE	SGOMI		

SGOMI

PLOT PLAN FOR

STARKS & MASNER 3307 #30-1 & #30-1H  
SECTION 30, T33S, R7W, 6th P.M.  
NW 1/4 NE 1/4

SCALE: 1" = 60'  
DATE: 03-01-12  
DRAWN BY: C.C.  
REV: 03-07-12



● Monitoring Well

