



## DRILL STEM TEST REPORT

Prepared For: **Trans Pacific Oil Corp.**

100 South Main Suite 200  
Wichita, Kansas  
67202+3735

ATTN: Bryce Bidleman

**Leiker B 1-13**

**13/15S/18W Ellis Co.**

Start Date: 2012.02.06 @ 05:14:00

End Date: 2012.02.06 @ 00:00:00

Job Ticket #: 18831                      DST #: 1

Superior Testers Enterprises LLC  
PO Box 138 Great Bend KS 67530  
1-800-792-6902

Printed: 2012.02.07 @ 01:32:08



# DRILL STEM TEST REPORT

Trans Pacific Oil Corp.

**13/15S/18W Ellis Co.**

100 South Main Suite 200  
Wichita, Kansas  
67202+3735  
ATTN: Bryce Bidleman

**Leiker B 1-13**

Job Ticket: 18831

**DST#: 1**

Test Start: 2012.02.06 @ 05:14:00

## GENERAL INFORMATION:

Formation: **Lansing " 35" Zone**

Deviated: No Whipstock: ft (KB)

Time Tool Opened: 00:00:00

Time Test Ended: 00:00:00

Test Type: Conventional Bottom Hole (Initial)

Tester: Dylan E Ellis

Unit No: 3345/Great Bend/110

**Interval: 3309.00 ft (KB) To 3340.00 ft (KB) (TVD)**

Reference Elevations: 2009.00 ft (KB)

Total Depth: 3340.00 ft (KB) (TVD)

2004.00 ft (CF)

Hole Diameter: 7.88 inches Hole Condition: Fair

KB to GR/CF: 5.00 ft

**Serial #: 6666 Outside**

Press @ RunDepth: 838.65 psia @ 3336.00 ft (KB)

Capacity: 5000.00 psia

Start Date: 2012.02.06

End Date: 2012.02.07

Last Calib.: 2012.02.07

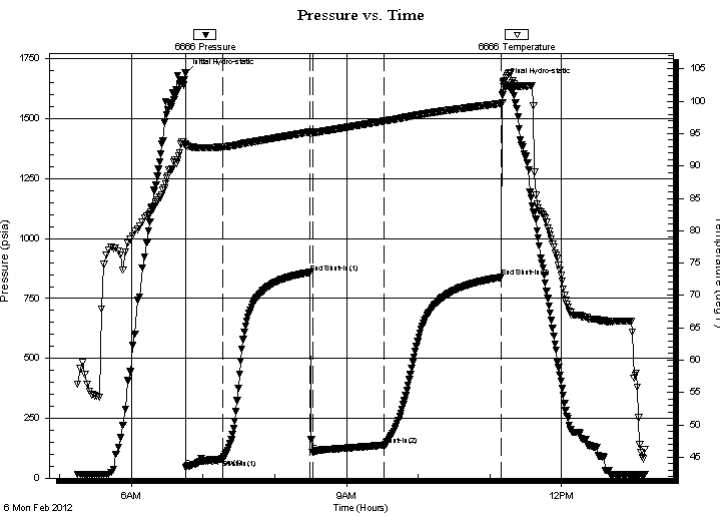
Start Time: 05:14:00

End Time: 13:10:00

Time On Btm: 2012.02.06 @ 06:45:00

Time Off Btm: 2012.02.06 @ 11:11:00

**TEST COMMENT:** 1ST Opening 30 Minutes very weak building blow /blow blew 4 inches into bucket of water  
1ST Shut-In 75 Minutes no blow back  
2ND Opening 60 Minutes very weak building blow /blow blew 4 inches into bucket of water  
2ND Shut-In 90 Minutes no blow back



## PRESSURE SUMMARY

Time (Min.)	Pressure (psia)	Temp (deg F)	Annotation
0	1690.68	93.44	Initial Hydro-static
1	44.85	93.25	Open To Flow (1)
31	80.30	92.94	Shut-In(1)
104	858.30	95.25	End Shut-In(1)
107	107.51	95.14	Open To Flow (2)
167	138.01	96.94	Shut-In(2)
265	838.65	99.66	End Shut-In(2)
266	1650.94	101.31	Final Hydro-static

## Recovery

Length (ft)	Description	Volume (bbl)
310.00	very lightly oil spotted mud	4.35
0.00	5% Oil 95% Mud	0.00

## Gas Rates

Choke (inches)	Pressure (psia)	Gas Rate (Mcf/d)



# DRILL STEM TEST REPORT

Trans Pacific Oil Corp.

**13/15S/18W Ellis Co.**

100 South Main Suite 200  
Wichita, Kansas  
67202+3735  
ATTN: Bryce Bidleman

**Leiker B 1-13**

Job Ticket: 18831

**DST#: 1**

Test Start: 2012.02.06 @ 05:14:00

## GENERAL INFORMATION:

Formation: **Lansing " 35" Zone**

Deviated: No Whipstock: ft (KB)

Time Tool Opened: 00:00:00

Time Test Ended: 00:00:00

Test Type: Conventional Bottom Hole (Initial)

Tester: Dylan E Ellis

Unit No: 3345/Great Bend/110

**Interval: 3309.00 ft (KB) To 3340.00 ft (KB) (TVD)**

Reference Elevations: 2009.00 ft (KB)

Total Depth: 3340.00 ft (KB) (TVD)

2004.00 ft (CF)

Hole Diameter: 7.88 inches Hole Condition: Fair

KB to GR/CF: 5.00 ft

**Serial #: 6731 Inside**

Press @ Run Depth: 837.82 psia @ 3337.00 ft (KB)

Capacity: 5000.00 psia

Start Date: 2012.02.06

End Date: 2012.02.07

Last Calib.: 2012.02.07

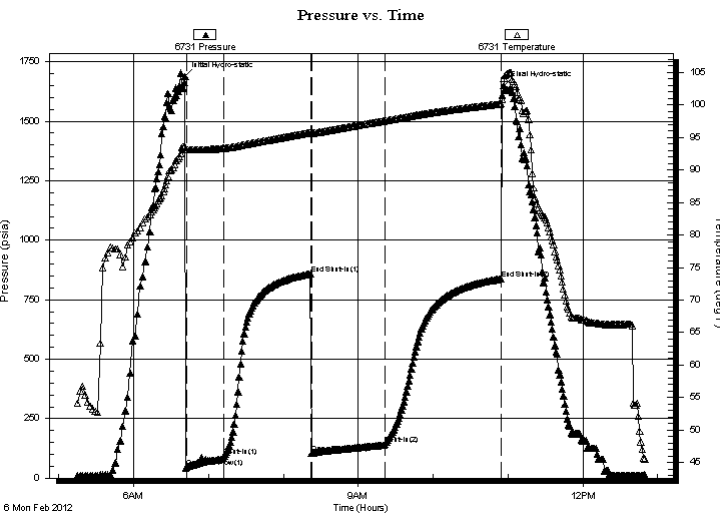
Start Time: 05:14:00

End Time: 12:49:30

Time On Btm: 2012.02.06 @ 06:41:00

Time Off Btm: 2012.02.06 @ 10:56:30

**TEST COMMENT:** 1ST Opening 30 Minutes very weak building blow /blow blew 4 inches into bucket of water  
1ST Shut-In 75 Minutes no blow back  
2ND Opening 60 Minutes very weak building blow /blow blew 4 inches into bucket of water  
2ND Shut-In 90 Minutes no blow back



## PRESSURE SUMMARY

Time (Min.)	Pressure (psia)	Temp (deg F)	Annotation
0	1687.13	93.66	Initial Hydro-static
1	45.42	93.12	Open To Flow (1)
32	90.53	93.33	Shut-In(1)
101	857.98	95.75	End Shut-In(1)
102	105.62	95.63	Open To Flow (2)
161	143.65	97.55	Shut-In(2)
254	837.82	100.15	End Shut-In(2)
256	1650.71	104.10	Final Hydro-static

## Recovery

Length (ft)	Description	Volume (bbl)
310.00	very lightly oil spotted mud	4.35
0.00	5% Oil 95% Mud	0.00

## Gas Rates

	Choke (inches)	Pressure (psia)	Gas Rate (Mcf/d)



# DRILL STEM TEST REPORT

**TOOL DIAGRAM**

Trans Pacific Oil Corp.

**13/15S/18W Ellis Co.**

100 South Main Suite 200  
 Wichita, Kansas  
 67202+3735  
 ATTN: Bryce Bidleman

**Leiker B 1-13**

Job Ticket: 18831

**DST#: 1**

Test Start: 2012.02.06 @ 05:14:00

**Tool Information**

Drill Pipe:	Length: 3304.00 ft	Diameter: 3.80 inches	Volume: 46.35 bbl	Tool Weight: 2000.00 lb
Heavy Wt. Pipe:	Length: 0.00 ft	Diameter: 0.00 inches	Volume: 0.00 bbl	Weight set on Packer: 20000.00 lb
Drill Collar:	Length: 0.00 ft	Diameter: 2.25 inches	Volume: 0.00 bbl	Weight to Pull Loose: 16000.00 lb
			<u>Total Volume: 46.35 bbl</u>	Tool Chased 0.00 ft
Drill Pipe Above KB:	15.00 ft			String Weight: Initial 46000.00 lb
Depth to Top Packer:	3309.00 ft			Final 46000.00 lb
Depth to Bottom Packer:	ft			
Interval between Packers:	31.00 ft			
Tool Length:	51.00 ft			
Number of Packers:	2	Diameter: 6.75 inches		

Tool Comments:

Tool Description	Length (ft)	Serial No.	Position	Depth (ft)	Accum. Lengths
------------------	-------------	------------	----------	------------	----------------

Shut-In Tool	5.00			3294.00	
Hydraulic Tool	5.00			3299.00	
Packer	5.00			3304.00	20.00 Bottom Of Top Packer
Packer	5.00			3309.00	
Anchor	26.00			3335.00	
Recorder	1.00	6666	Outside	3336.00	
Recorder	1.00	6731	Inside	3337.00	
Bull Plug	3.00			3340.00	31.00 Bottom Packers & Anchor

**Total Tool Length: 51.00**



# DRILL STEM TEST REPORT

## FLUID SUMMARY

Trans Pacific Oil Corp.

**13/15S/18W Ellis Co.**

100 South Main Suite 200  
 Wichita, Kansas  
 67202+3735  
 ATTN: Bryce Bidleman

**Leiker B 1-13**

Job Ticket: 18831

**DST#: 1**

Test Start: 2012.02.06 @ 05:14:00

### Mud and Cushion Information

Mud Type: Gel Chem  
 Mud Weight: 9.00 lb/gal  
 Viscosity: 49.00 sec/qt  
 Water Loss: 7.60 in<sup>3</sup>  
 Resistivity: ohm.m  
 Salinity: 5000.00 ppm  
 Filter Cake: 1.00 inches

Cushion Type:  
 Cushion Length: ft  
 Cushion Volume: bbl  
 Gas Cushion Type:  
 Gas Cushion Pressure: psia

Oil API: deg API  
 Water Salinity: ppm

### Recovery Information

Recovery Table

Length ft	Description	Volume bbl
310.00	very lightly oil spotted mud	4.348
0.00	5% Oil 95% Mud	0.000

Total Length: 310.00 ft      Total Volume: 4.348 bbl

Num Fluid Samples: 0

Num Gas Bombs: 0

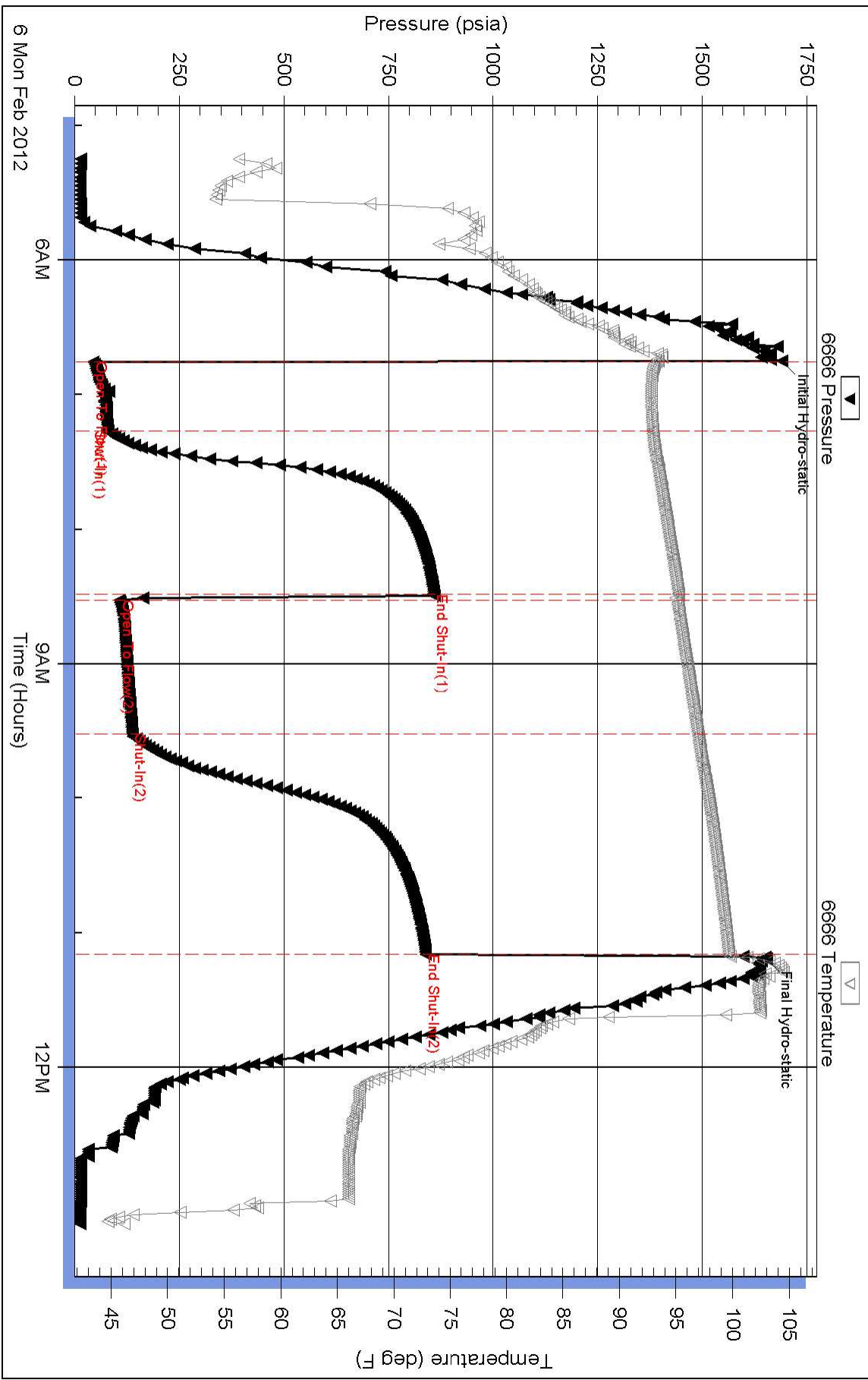
Serial #:

Laboratory Name:

Laboratory Location:

Recovery Comments:

### Pressure vs. Time



### Pressure vs. Time

