



DRILL STEM TEST REPORT

Prepared For: **Trans Pacific Oil Corp.**

100 South Main Suite 200
Wichita, Kansas
67202+3735

ATTN: Bryce Bidleman

Leiker B 1-13

13/15S/18W Ellis Co.

Start Date: 2012.02.07 @ 01:35:00

End Date: 2012.02.07 @ 07:58:00

Job Ticket #: 18832 DST #: 2

Superior Testers Enterprises LLC
PO Box 138 Great Bend KS 67530
1-800-792-6902

Printed: 2012.02.07 @ 18:12:48



DRILL STEM TEST REPORT

Trans Pacific Oil Corp.
 100 South Main Suite 200
 Wichita, Kansas
 67202+3735
 ATTN: Bryce Bidleman

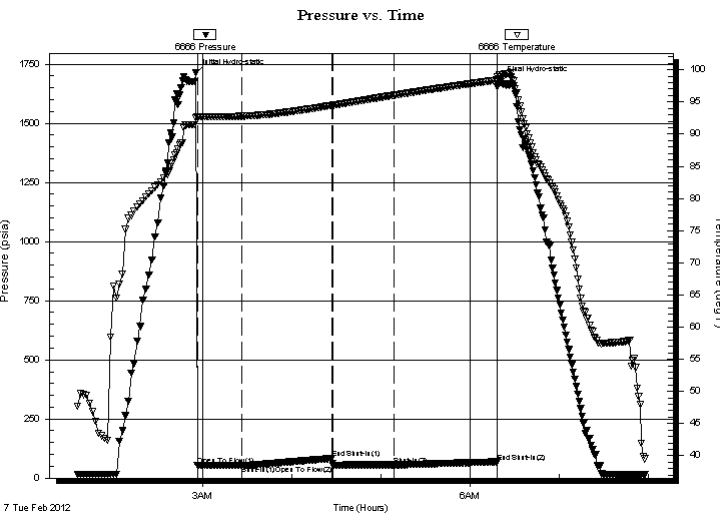
13/15S/18W Ellis Co.
Leiker B 1-13
 Job Ticket: 18832 **DST#: 2**
 Test Start: 2012.02.07 @ 01:35:00

GENERAL INFORMATION:

Formation: **Lansing " 50,70,90**
 Deviated: No Whipstock: ft (KB)
 Time Tool Opened: 02:56:30
 Time Test Ended: 07:58:00
 Test Type: Conventional Bottom Hole (Initial)
 Tester: Dylan E Ellis
 Unit No: 3345/Great Bend/110
 Interval: **3341.00 ft (KB) To 3396.00 ft (KB) (TVD)**
 Reference Elevations: 2009.00 ft (KB)
 Total Depth: 3396.00 ft (KB) (TVD) 2004.00 ft (CF)
 Hole Diameter: 7.88 inches Hole Condition: Fair KB to GR/CF: 5.00 ft

Serial #: 6666 Outside
 Press @ Run Depth: 56.38 psia @ 3392.47 ft (KB) Capacity: 5000.00 psia
 Start Date: 2012.02.07 End Date: 2012.02.07 Last Calib.: 2012.02.07
 Start Time: 01:35:00 End Time: 07:58:00 Time On Btm: 2012.02.07 @ 02:55:30
 Time Off Btm: 2012.02.07 @ 06:20:00

TEST COMMENT: 1ST Opening 30 Minutes very weak surface blow /blow stayed there through the entire opening
 1ST Shut-In 60 Minutes no blow back
 2ND Opening 40 Minutes very very weak surface blow /blow died in 40 minutes
 2Nd Shut-In 60 Minutes no blow back



PRESSURE SUMMARY

Time (Min.)	Pressure (psia)	Temp (deg F)	Annotation
0	1711.43	92.51	Initial Hydro-static
1	52.77	92.65	Open To Flow (1)
31	53.92	92.77	Shut-In(1)
92	83.25	94.46	End Shut-In(1)
93	54.88	94.49	Open To Flow (2)
134	56.38	96.03	Shut-In(2)
203	68.93	98.39	End Shut-In(2)
205	1679.50	99.19	Final Hydro-static

Recovery

Length (ft)	Description	Volume (bbl)
5.00	Drilling Mud 100%	0.07

Gas Rates

Choke (inches)	Pressure (psia)	Gas Rate (Mcf/d)



DRILL STEM TEST REPORT

Trans Pacific Oil Corp.

13/15S/18W Ellis Co.

100 South Main Suite 200
Wichita, Kansas
67202+3735
ATTN: Bryce Bidleman

Leiker B 1-13

Job Ticket: 18832

DST#: 2

Test Start: 2012.02.07 @ 01:35:00

GENERAL INFORMATION:

Formation: **Lansing " 50,70,90**

Deviated: No Whipstock: ft (KB)

Time Tool Opened: 02:56:30

Time Test Ended: 07:58:00

Test Type: Conventional Bottom Hole (Initial)

Tester: Dylan E Ellis

Unit No: 3345/Great Bend/110

Interval: 3341.00 ft (KB) To 3396.00 ft (KB) (TVD)

Reference Elevations: 2009.00 ft (KB)

Total Depth: 3396.00 ft (KB) (TVD)

2004.00 ft (CF)

Hole Diameter: 7.88 inches Hole Condition: Fair

KB to GR/CF: 5.00 ft

Serial #: 6731

Inside

Press @ RunDepth: 69.38 psia @ 3391.47 ft (KB)

Capacity: 5000.00 psia

Start Date: 2012.02.07

End Date:

2012.02.07

Last Calib.:

2012.02.07

Start Time:

01:35:00

End Time:

07:42:00

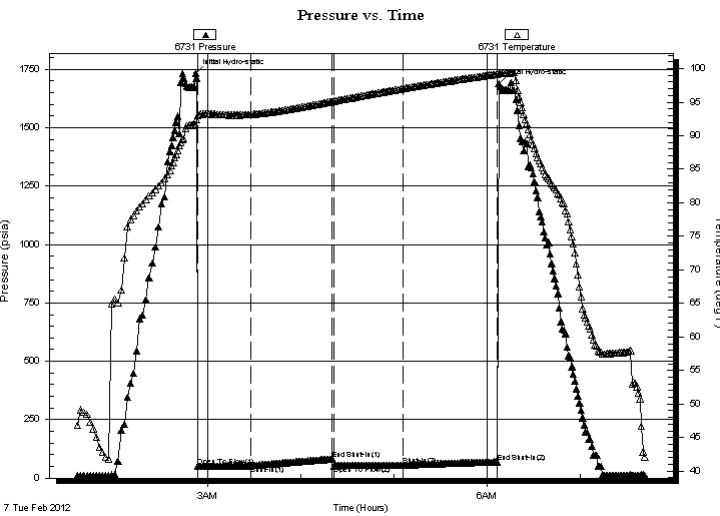
Time On Btm:

2012.02.07 @ 02:52:00

Time Off Btm:

2012.02.07 @ 06:07:30

TEST COMMENT: 1ST Opening 30 Minutes very weak surface blow /blow stayed there through the entire opening
1ST Shut-In 60 Minutes no blow back
2ND Opening 40 Minutes very very weak surface blow /blow died in 40 minutes
2Nd Shut-In 60 Minutes no blow back



PRESSURE SUMMARY

Time (Min.)	Pressure (psia)	Temp (deg F)	Annotation
0	1733.63	91.59	Initial Hydro-static
2	51.57	92.99	Open To Flow (1)
36	53.59	93.17	Shut-In(1)
88	81.91	95.09	End Shut-In(1)
90	53.23	95.16	Open To Flow (2)
134	55.55	97.03	Shut-In(2)
195	69.38	99.18	End Shut-In(2)
196	1688.11	99.27	Final Hydro-static

Recovery

Length (ft)	Description	Volume (bbl)
5.00	Drilling Mud 100%	0.07

Gas Rates

	Choke (inches)	Pressure (psia)	Gas Rate (Mcf/d)



DRILL STEM TEST REPORT

TOOL DIAGRAM

Trans Pacific Oil Corp.

13/15S/18W Ellis Co.

100 South Main Suite 200
 Wichita, Kansas
 67202+3735
 ATTN: Bryce Bidleman

Leiker B 1-13

Job Ticket: 18832

DST#: 2

Test Start: 2012.02.07 @ 01:35:00

Tool Information

Drill Pipe:	Length: 3335.00 ft	Diameter: 3.80 inches	Volume: 46.78 bbl	Tool Weight:	2000.00 lb
Heavy Wt. Pipe:	Length: 0.00 ft	Diameter: 0.00 inches	Volume: 0.00 bbl	Weight set on Packer:	20000.00 lb
Drill Collar:	Length: 0.00 ft	Diameter: 2.25 inches	Volume: 0.00 bbl	Weight to Pull Loose:	17000.00 lb
			<u>Total Volume: 46.78 bbl</u>	Tool Chased	0.00 ft
Drill Pipe Above KB:	14.00 ft			String Weight: Initial	46000.00 lb
Depth to Top Packer:	3341.00 ft			Final	47000.00 lb
Depth to Bottom Packer:	ft				
Interval between Packers:	54.47 ft				
Tool Length:	74.47 ft				
Number of Packers:	2	Diameter: 6.75 inches			
Tool Comments:					

Tool Description	Length (ft)	Serial No.	Position	Depth (ft)	Accum. Lengths
-------------------------	--------------------	-------------------	-----------------	-------------------	-----------------------

Shut-In Tool	5.00			3326.00	
Hydraulic Tool	5.00			3331.00	
Packer	5.00			3336.00	20.00 Bottom Of Top Packer
Packer	5.00			3341.00	
Anchor	6.00			3347.00	
Change Over Sub	0.75			3347.75	
Drill Pipe	31.97			3379.72	
Change Over Sub	0.75			3380.47	
Anchor	10.00			3390.47	
Recorder	1.00	6731	Inside	3391.47	
Recorder	1.00	6666	Outside	3392.47	
Bull Plug	3.00			3395.47	54.47 Bottom Packers & Anchor

Total Tool Length: 74.47



DRILL STEM TEST REPORT

FLUID SUMMARY

Trans Pacific Oil Corp.

13/15S/18W Ellis Co.

100 South Main Suite 200
Wichita, Kansas
67202+3735
ATTN: Bryce Bidleman

Leiker B 1-13

Job Ticket: 18832

DST#: 2

Test Start: 2012.02.07 @ 01:35:00

Mud and Cushion Information

Mud Type: Gel Chem

Mud Weight: 9.00 lb/gal

Viscosity: 51.00 sec/qt

Water Loss: 7.60 in³

Resistivity: ohm.m

Salinity: 4800.00 ppm

Filter Cake: 1.00 inches

Cushion Type:

Cushion Length: ft

Cushion Volume: bbl

Gas Cushion Type:

Gas Cushion Pressure: psia

Oil API:

Water Salinity: deg API

ppm

Recovery Information

Recovery Table

Length ft	Description	Volume bbl
5.00	Drilling Mud 100%	0.070

Total Length: 5.00 ft Total Volume: 0.070 bbl

Num Fluid Samples: 0

Num Gas Bombs: 0

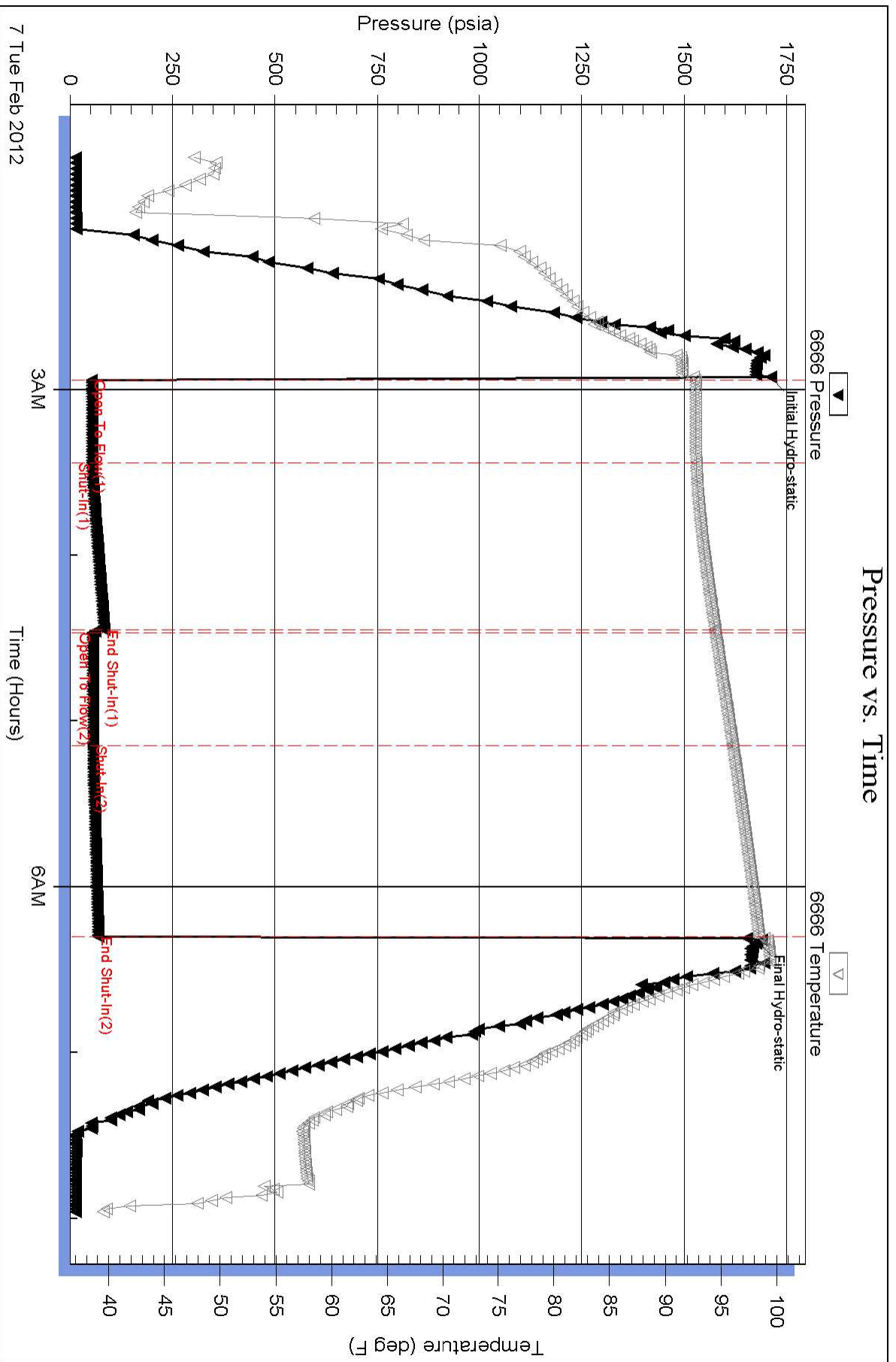
Serial #:

Laboratory Name:

Laboratory Location:

Recovery Comments: Thank You for the work

Pressure vs. Time



Pressure vs. Time

