

GEOLOGIST'S REPORT

DRILLING TIME AND SAMPLE LOG

COMPANY <i>Trans Pacific Oil Corp.</i>	ELEVATIONS
WELL # <i>#1-13 Leiker B</i>	2009
DEPTH <i>2310' FNL, 860' FEL</i>	2004
DATE <i>13</i> <i>15</i> <i>18w</i>	Measurements Are A
COUNTY <i>Ellis</i> STATE <i>Kansas</i>	From <i>K.B.</i>
CONTRACTOR <i>Shields Drilling Co., Inc.</i>	CASING
START <i>1-31-12</i> COMP <i>2-9-12</i>	SURFACE <i>8 5/8" @ 1182'</i>
DEPTH <i>3589'</i> LTD <i>3590'</i>	PRODUCTION <i>5 1/2" @ 3584'</i>
TYPE <i>2800</i> TYPE <i>WEL Chemical</i>	ELECTRICAL SURVEYS
SAMPLES SAVED FROM <i>2950</i>	<i>Superior Well Services</i>
DRILLING TIME KEPT FROM <i>2800</i>	<i>RAG</i>
SAMPLES EXAMINED FROM <i>2950</i>	TO <i>TD</i>
GEOLOGICAL SUPERVISOR FROM <i>2910</i>	TO <i>TD</i>
GEOLOGIST ON WELL <i>W. Bryce Bidleman</i>	

FORMATION TOPS	LOC	SAMPLES	Reference Well: TPO Leiker A-1-18 70' N of SW NWSW Sec. 18-15s-17w
Anhydrite	1121 +838	+3'	
Base/Anhydrite	1211 +798	-1'	
Topeka	2988 -977	+1'	
Heebner	3253 -1244	+1'	
Lansing	3304 -1295	Flat	
Base Kansas City	3529 -1520	+3'	
Arbuckle	3583 -1574	+12'	
LTD	3590 -1581		

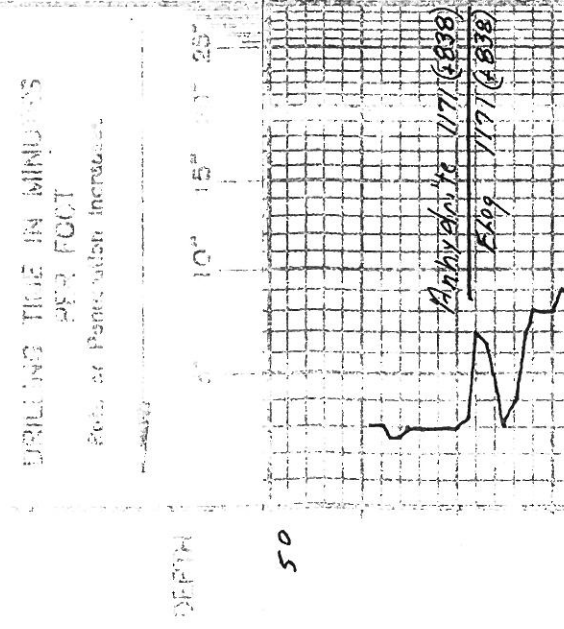
Due to positive structural position and encouraging DST results in the 5 1/2" production casing was set 6' off bottom to further test the Arbuckle in the open hole.

*Respectfully,
W. Bryce Bidleman*

LEGEND

- Anhydrite
- Sandstone
- Shale
- Carbonaceous Shale
- Limestone
- Dolomite

SCALE 1" = 100'



REMARKS

*Note:
8 5/8" casing was set
No drill time was rec
after 1185' so Base
Anhydrite is not se
on drill time.*

NEWBY

50

Anhydrite 1171 (838)
Flag 1171 (838)

Note:
8 5/8" casing was set @
after 1185' so Base
Anhydrite is not see
on drill time.

1200

Base Anhydrite No Sample Top
Flag 1211 (798)

50
2800

Tankie 2845 (836)
Flag - Same

2845
(836)
(7250)

2900

50

LM-12 → 6Y Fx Foss TR GLUC,
SHX, M. RT, MOST PSE.
SB-6Y

LM-AA

LM-12 → 8Y → 6Y F Foss,
DSE, SHX → 6Y → 6Y

SH-6Y → 6Y → 6Y → 6Y
SOME ARE 6Y

Topeka
2559
(980)
147

3000

Topeka 2989 (980)
E105 2988 (979)

50

3100

50

CA11
3120
(1161)

3200

SH-GY → BLK. SOME ARG GY
LA.

LM-TA → BLK, FX, FOSS, DSE.

LM-TA → GY, FX, FOSS, DSE, ARG
IN PT, DSE.

LM-CRM → TA, FX, ABOVE FOSS
FEW VLS. FOSSEMS, RESIST
DSE, MS.

LM-TA → GY, FX, ABOVE FOSS,
DSE.

LM-TA → GY, FX, FOSS, CHKY, ARG
IN PT, FEW VLS. FOSSEMS, MS.

LM-CRM → TA, FX, FOSS, CHKY, IN PT,
MOST DSE, MS.

LM-TA → FX, ABOVE FOSS, CHKY
IN PT, MOST DSE.

LM-TA → BLK, FX, DSE, HARD,
MS.

LM-TA → GY, FX, FOSS, DSE,
SM. AMT. CHK.

LM-TA → FX, DSE, HARD, CHKY
IN PT.

LM-TA → GY, TA, FX, FOSS, MOST
DSE, CHKY, ARG IN PT,
TR. IN CHT.

LM-TA → GY, TA, FX, FOSS IN PT,
DSE.

LM-AA
SH-GRA → GY → BLK, MIC IN PT.

SH-MART → GY → BLK, SILTY IN PT.

LM-TA → FX, DSE, CHKY IN PT.
SH-AA.

SH-DAG → GY → BLK,
LM-CRM → TA, FEW FOSS, DSE.

LM-CRM → TA, FX, FEW FOSS,
DSE, SM. AMT. CHK.
TR. GY CHT. SH-AA.

LM-CRM → TA, FX, DSE, CHKY IN PT.
CHI-120761, FOSS, BLK.

LM-CHT-AA.

LM-CRM → TA, FX, MOST DSE, CHKY
IN PT. FR. AMT. CHT - TA → GY,
FOSS, SMP.

SH-MAR → GR → GY → BLK.

LM-TA → FX, FOSS, DSE, SMALL
AMT. CHK. CHT - TA → GY, FOSS,
SH-AA.

LM-TA → GY, FX, FEW FOSS, DSE,
CHKY IN PT. MS.

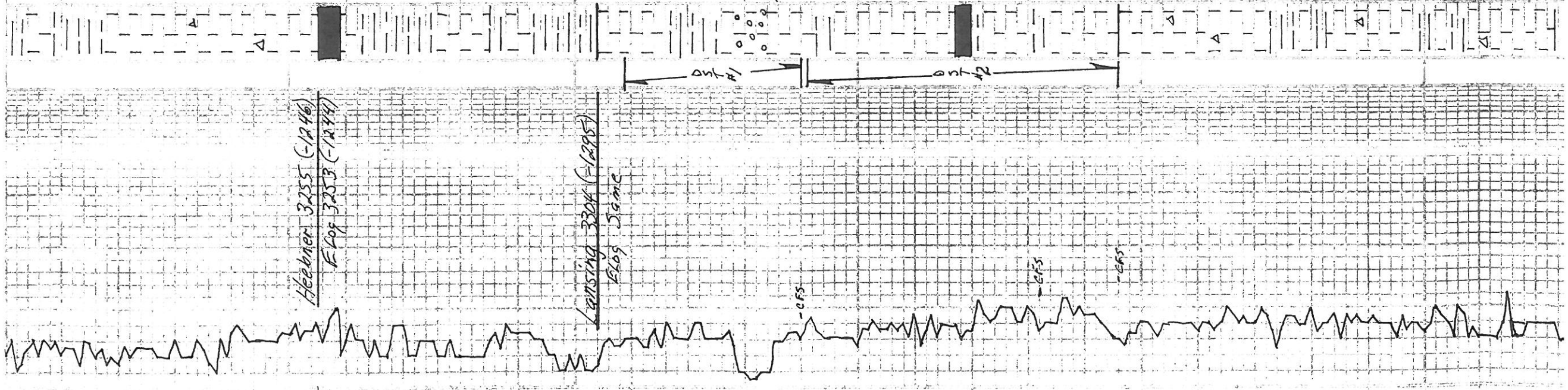
LM-AA SH-GRA → GY → BLK.

LM-TA → GY → TA, FX, CHKY, ARG IN
PT, FEW SCALLOPS, MOST DSE,
WK. ODD, No. 5 in sp.

LM-CRM → TA, FX, SCAL. PR. DUPT
B. 55. 545 ON BRK, TA FO, WK
BOOK.

CHKY IN PT.

3400



50
Heebner
3255
(1246)

3300
Lansing
3304
(1295)
Flat

50

3400

50

LM-AA SH-GRN → GY → BLK.

LM-TL → GY → TR. Ex. CHK. GRN in pt., FEW SCATT VGS, MOST DSE. WK ODOOR. No Sew in sil.

LM-CRM-TL, Ex. SCATT PR PUNCT. P. SS GAS ON BRK, TR FO, WK ODOOR.

LM-CRM → TL → Ex. Foss, PR SCAT PL. FEW Foss, MOST DSE. WK ODOOR. No VIB. DSE. TR FO. LHT-TL → GY → TR. Foss.

LM-CRM, FA, FR AMT GRN, SPT, FEW Foss. SH-GR → BLK, TR CARB SH.

SH-BLK, CARB, SPT.

LM-GY, FA, Foss, DSE.

SH-GR → GY → BLK, FR AMT TR GRN CLAYS.

LM-CRM → TL, Ex. DSE, FR AMT GRN. LHT-TL → ORANGE, 1 pc w/ BLK. GYs, No Foss.

LM-CRM → TL, Ex. Foss, SCATT PR VGS, 1, MPD DSE, FR AMT GRN. LHT-TL → ORANGE, 1 pc w/ BLK. GYs, No Foss.

SH-RD → GR → GY, SILTY WPT.

DST #1 3304' - 3340'
30-75 - 60-90

1st Open - Very weak, built
2nd Open - Very weak, built
Rec: 310' VS o-spotted
Note: Packing in shut was leaking. Rec amount is too high. PR are all valid.

FP: 44-80 / 107-158
SIP: 858 / 838
HP: 1690 / 1650

LM-CRM → TL, Ex. Foss, FEW SCATT VGS. LHT-TL → ORANGE, 1 pc w/ BLK. GYs, No Foss.

LM-AA, NS. SH-MAR → GY.

FM-TL, F → MX, FEW Foss, OLLY GO OOLDOY, FEW Foss. LHT-TL → ORANGE, 1 pc w/ BLK. GYs, No Foss.

LM-TL, Ex. Foss, FEW SCAT VGS. MOSTLY DSE, NS.

LM-CRM → TL, Ex. FEW Foss, PR VGS, 1, END CASE IN SOME PT. SS. DSE. TR FO. SILTY STR. OK ODOOR.

DST #2 3341' - 33:33

30-60 - 40-60
1st Open - Very Weak, silty
2nd Open - Very Weak, silty
Died in 40 min.

Rec: 5' M (No Show)
FP: 52-53 / 54-56
SIP: 83 / 68
HP: 1711 / 1679

LM-CRM → TL, Ex. Foss, MOSTLY DSE SCAT, PR VGS, FEW Foss, TR GRN, SH-GR → GY, TR CARB SH, No Foss, SH-GR → GY, TR CARB SH. LHT-TL → ORANGE, 1 pc w/ BLK. GYs, No Foss.

LM-TL, Ex. Foss, SCATT PR VGS, 1, MPD DSE, FR AMT GRN. LHT-TL → ORANGE, 1 pc w/ BLK. GYs, No Foss.

LM-CRM → TL, Ex. FEW Foss, PR VGS, 1, END CASE IN SOME PT. SS. DSE. TR FO. SILTY STR. OK ODOOR.

LM-WH → GR → TR, Ex. FEW Foss, PR VGS, 1, END CASE IN SOME PT. SS. DSE. TR FO. SILTY STR. OK ODOOR.

LM-WH → GR → TR, Ex. FEW Foss, PR VGS, 1, END CASE IN SOME PT. SS. DSE. TR FO. SILTY STR. OK ODOOR.

LM-WH → GR → TR, Ex. FEW Foss, PR VGS, 1, END CASE IN SOME PT. SS. DSE. TR FO. SILTY STR. OK ODOOR.

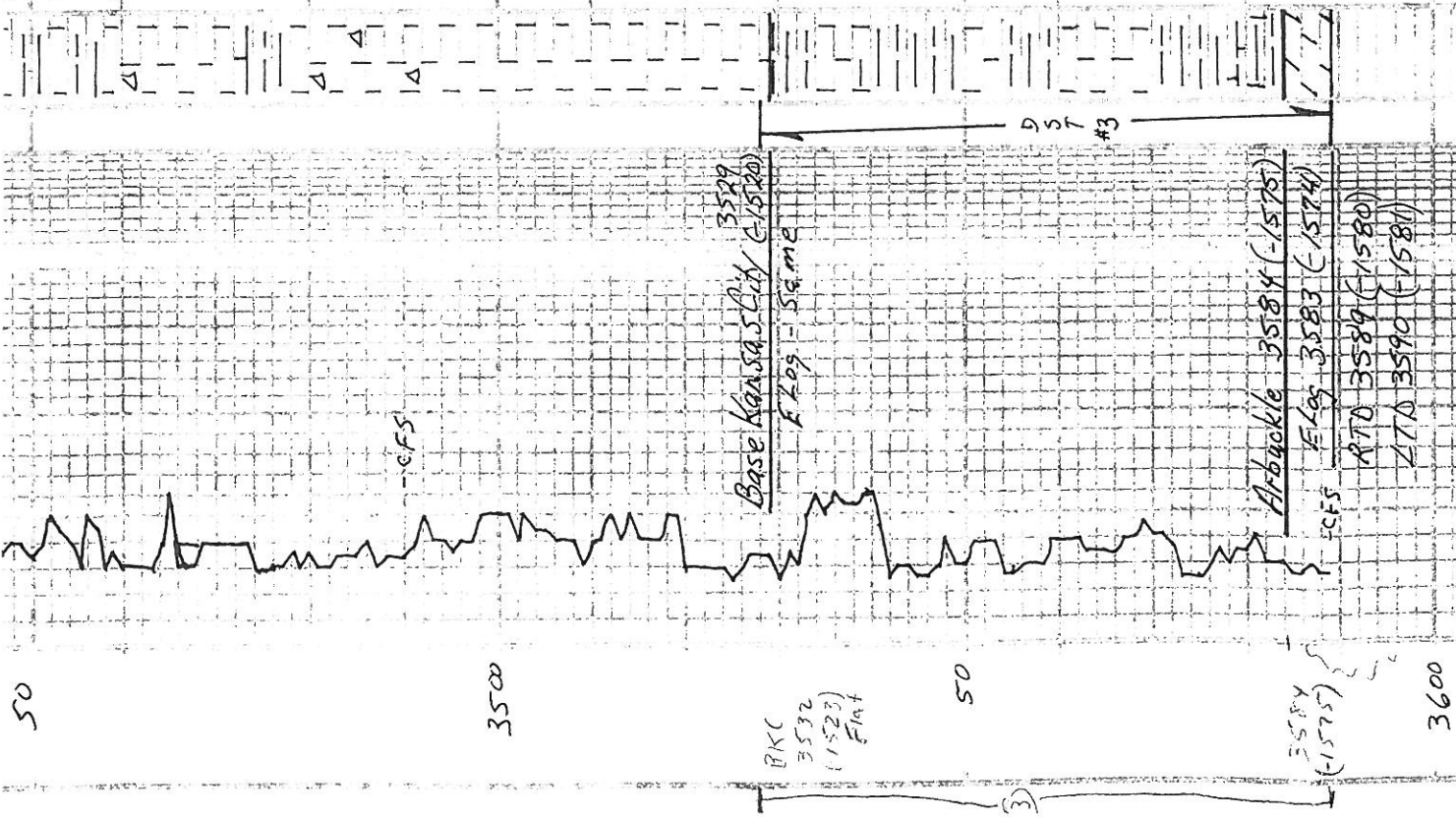
LM-CRM → TL, Ex. FEW Foss, PR VGS, 1, END CASE IN SOME PT. SS. DSE. TR FO. SILTY STR. OK ODOOR.

LM-TL → GR → TR, Ex. FEW Foss, PR VGS, 1, END CASE IN SOME PT. SS. DSE. TR FO. SILTY STR. OK ODOOR.

LM-WH → GR → TR, Ex. FEW Foss, PR VGS, 1, END CASE IN SOME PT. SS. DSE. TR FO. SILTY STR. OK ODOOR.

LM-AA, SS FOLL. SPOTTY STR. WK ODOOR. LHT-TL → ORANGE, 1 pc w/ BLK. GYs, No Foss.

LM-CRM → TL, Ex. FEW Foss, PR VGS, 1, END CASE IN SOME PT. SS. DSE. TR FO. SILTY STR. OK ODOOR.



1. FOSMAD, WEST WSK. SAKIN WPT
 SMALL AMT 2ND CAL, VES FO.
 LT SPOTTY STR, Noodar, FR AMT
 T.P. CHL.
 LM- AA. SPOTTY LT SPOTTY STR,
 W/ KODOR. CAT - AA
 SH- DR GRU - GY - BLK.
 LM- GRM - TR - FX. MOSTLY DSE,
 FR AMT MX 2ND CAL, FEW VLS,
 N.S. SH - CHT - AA.
 LM - GRM - TR, FX, FEW FOSS, FEW
 SCAT VLS, MOST DSE. CAT - TR,
 TR - AA, SH, N.S.
 LM - GRM - TR, FX, MOSTLY DSE,
 FR AMT CHK, CHT - GRM - AA,
 TR - AA, SH, N.S.
 LM - GRM - TR, FX, DSE, SCAT
 MX 2ND CAL, N.S.
 LM - TR - GRM - TR, FX, FOS IN PT, SCAT
 FR VLS, FEW FOSS, NOD, AMT
 DSE, FR AMT CLR SPARK - CALC.
 N.S.
 LM - GRM - TR, FX, FOS, DSE,
 SMALL AMT CHK, N.S.
 LM - TR - GRM - TR, FX, FOS, DSE.
 SH - DR GRU - GY - BLK.
 LM - GRM - TR, FX, FOS, DSE,
 SMALL AMT CHK. N.S.,
 SH - AA.
 LM - GRM - TR, FX, FEW FOS,
 MOST DSE, FR AMT IN PT,
 SH - GRM - TR - GY.
 SH - GRM - TR, FX, FEW FOS,
 LM - GRM - TR, FX, FEW FOS, FEW
 GRAS IN PT, DSE, N.S.
 LM - TR - GRM - TR - FX, FEW FOS, FR AMT,
 MOST WPT W/ R CLAST, FEW
 FOS, DSE. SH - AA.
 LM - GRM - TR, FX, FEW FOS,
 GRM - TR, SCAT, GY VLS,
 FR AMT, ES DR GRU FO: SPOT
 DK STR, FR DSE.
 LM - AA, PS DR GRU FO: SPOT STR,
 W/ KODOR. SH - GRM - TR - GY - BLK.
 SH - GRM - TR, FX, FEW FOS,
 DSE, TR, FOS, SOCR IN PT, FR ER
 VLS, INT - GRU, FEW GRATES,
 G.S. CO. SAT STR, G.P. FLU,
 G.D. GRU.

DST #3 3528' - 3589'
 30 - 75 - 60 - 90
 1st Open - Fair, BOB/8
 Approx 3" blow bec
 1st Shut in,
 2nd Open - Fair, BOB/5
 2" Blowback - 2nd
 Rec: 126' GIP
 630' CGO (2520
 252' OCGM (1576
 882' Total Fluio
 FP: 98 - 231 / 240 - 36
 SIP: 1106 / 1063
 HP: 1874 / 1825

DEPTH	DRILLING TIME Minutes/Foot	SAMPLE DESCRIPTIONS	REMARKS

COMPANY Trans Pacific Oil Corp.
 LEASE Leiker B #1-13
 LOCATION 2310 FNL, 860' FEL SEC 13, NW 15s, R18w
 COUNTY Ellis STATE Kansas ELEVATION K.B. 2009