

OPERATOR

Company: Falcon Exploration, Inc.
 Address: 125 N. Market
 Suite 1252
 Wichita, KS 67202
 Contact Geologist: Brian Fisher
 Contact Phone Nbr: 316-262-1378
 Well Name: Henry Koehn #1-13
 Location: Sec. 13 - T28S - R30W
 Pool: Sec. 13 - T28S - R30W
 State: Kansas
 API: 15-069-20357-0000
 Field: Wildcat
 Country: USA

Scale 1:240 Imperial

Well Name: Henry Koehn #1-13
 Surface Location: Sec. 13 - T28S - R30W
 Bottom Location:
 API: 15-069-20357-0000
 License Number: 5316
 Spud Date: 1/2/2012
 Region: Gray County
 Drilling Completed: 1/15/2012
 Surface Coordinates: 1320' FNL & 1320' FEL
 Bottom Hole Coordinates:
 Ground Elevation: 2797.00ft
 K.B. Elevation: 2810.00ft
 Logged Interval: 3789.00ft
 Total Depth: 5440.00ft
 Formation: Mississippian
 Drilling Fluid Type: Chemical/Fresh Water Gel
 Time: 00:00
 Time: 18:10
 To: 5440.00ft

SURFACE CO-ORDINATES

Well Type: Vertical
 Longitude:
 N/S Co-ord: 1320' FNL
 E/W Co-ord: 1320' FEL
 Latitude:

LOGGED BY



Company: Keith Reavis, Inc.
 Address: 3420 22nd Street
 Great Bend, KS 67530
 Phone Nbr: 620-617-4091
 Logged By: KLG #136
 Name: Keith Reavis

CONTRACTOR

Contractor: Sterling Drilling Company
 Rig #: 5
 Rig Type: mud rotary
 Spud Date: 1/2/2012
 TD Date: 1/15/2012
 Rig Release:
 Time: 00:00
 Time: 18:10
 Time:

ELEVATIONS

K.B. Elevation: 2810.00ft
 K.B. to Ground: 13.00ft
 Ground Elevation: 2797.00ft

NOTES

This well was logged from the Chase Group to the Topeka by Geologist Dave Williams. At that time (during DST #2) he was relieved and I assumed well-site duties. His report is under separate cover and is attached as a link at the beginning of this log.

A Tooke Daq gas detector provided by Sterling Drilling was employed and drill time and gas data were imported into this log.

Due to favorable results of DST #1, 5 1/2" production was set through the Tarkio to further test the Stotler Limestone.

Samples were saved and will be available for review at the Kansas Geological Society Well Sample Library located in Wichita, KS.

Respectfully submitted,
 Keith Reavis

Falcon Exploration, Inc.

DAILY DRILLING REPORT

DATE	7:00 AM DEPTH	REMARKS
01/09/2012	3789	Geologist Keith Reavis on location @ 1600 hrs, 3789 ft. Relieve Geologist Dave Williams, conducting DST #2 – lower Howard
01/10/2012	3860	complete DST #2, drilling ahead, Topeka, Heebner, Douglas, Lansing
01/11/2012	4260	kick and show in Lansing A warrants DST, TOH for DST #3, conducting DST #3, complete DST #3, successful test, drill ahead, LKC
01/12/2012	4518	drilling ahead, LKC, BKC, Marmaton
01/13/2012	4908	drilling ahead, Marmaton, Pawnee, Cherokee
01/14/2012	5220	drilling ahead, Mississippian, show in St. Louis warrants DST, short trip, TOH and conduct DST #4, successful test, TIH w/bit
01/15/2012	5292	on bottom w/bit, ctch, resume drilling, TD @ 1810 hrs, 5440 ft, ctch and cfs, TOH for logs, conducting logging operations
01/16/2012	5440	complete logging operations, off location @ 0700

WELL COMPARISON SHEET

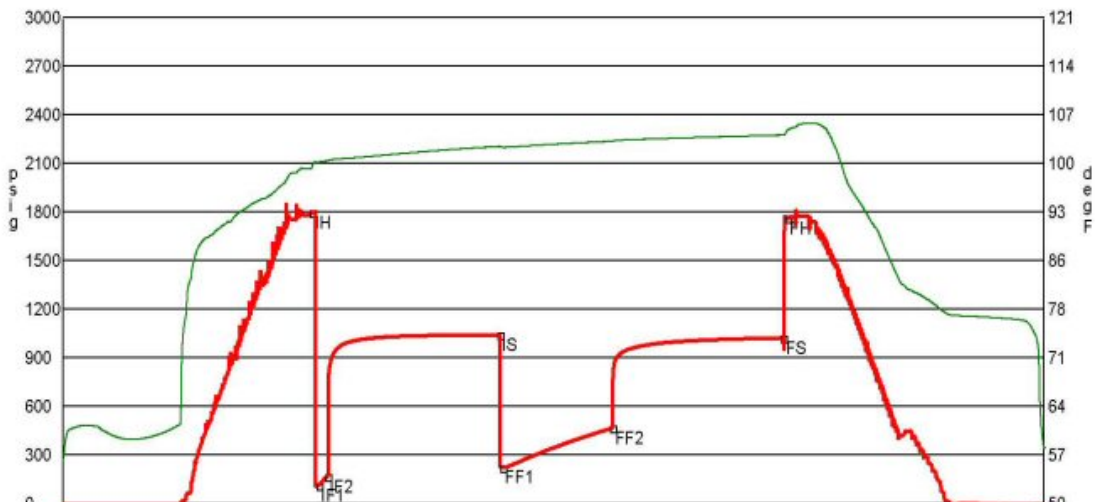
DRILLING WELL				COMPARISON WELL				COMPARISON WELL			
Henry Koehn #1-13 1320' FNL & 1320' FEL Sec. 13 T28S R30W				Falcon Dirks #1-12 2020' FSL & 770' FWL Sec. 12 T28S R30W				Williams #1-13 1230' FSL & 730' FEL Sec. 13 T28S R30W			
2810 KB				2806 KB				2810 KB			
Formation	Sample	Sub-Sea	Log	Log	Sub-Sea	Structural Relationship	Log	Log	Sub-Sea	Structural Relationship	Log
Chase	2670	140	2676	2654	152	-12	-18	2674	136	4	-2
Winfield	2748	62	2747	2729	77	-15	-14	2746	64	-2	-1
Towanda	2792	18	2792	2774	32	-14	-14	2790	20	-2	-2
Fl. Riley	2840	-30	2842	2827	-21	-9	-11	2840	-30	0	-2
Cottonwood	3103	-293	3103	3070	-264	-29	-29	3097	-287	-6	-6
Neva	3172	-362	3167	3151	-345	-17	-12	3164	-354	-8	-3
Foraker	3268	-458	3276	3260	-454	-4	-12	3273	-463	5	-3
Stotler	3520	-710	3518	3495	-689	-21	-19	3513	-703	-7	-5
Tarkio	3596	-786	3594	3568	-762	-24	-22	3586	-776	-10	-8
Bern	3690	-880	3690	3663	-857	-23	-23	3683	-873	-7	-7
Topeka	3796	-986	3794	3768	-962	-24	-22	3786	-976	-10	-8
Lecompton	3965	-1155	3963	3935	-1129	-26	-24	3968	-1158	3	5
Heebner	4148	-1338	4144	4119	-1313	-25	-21	4138	-1328	-10	-6
Lansing	4242	-1432	4238	4217	-1411	-21	-17	4233	-1423	-9	-5
Stark	4586	-1776	4583	4553	-1747	-29	-26	4576	-1766	-10	-7
Marmaton	4741	-1931	4746	4709	-1903	-28	-33	4737	-1927	-4	-9
Pawnee	4826	-2016	4824	4798	-1992	-24	-22	4820	-2010	-6	-4
Cherokee	4875	-2065	4871	4845	-2039	-26	-22	4868	-2058	-7	-3
Miss St. Gen.	5115	-2305	5111	5085	-2279	-26	-22	5094	-2284	-21	-17
St. Louis	5204	-2394	5201	5184	-2378	-16	-13	5183	-2373	-21	-18
Warsaw	np			np				5545	-2735		
Osage	np			np				5808	-2998		
Viola	np			np				6134	-3324		
Arbuckle	np			np				6279	-3469		
Total Depth	5440	-2630	5440	5406	-2600	-30	-30	6351	-3541	911	911

Drill Stem Test #2

RICKETTS TESTING		(620) 326-5830	Page 1
Company	Falcon Exploration Inc.	Lease Name	Henry Koehn NE
Address	125 N Market Ste 1252	Lease #	1-13
City	Wichita, KS 67202	Legal Desc	NE
Attn.	Dave Williams	Section	13
		Township	28s
		County	Gray
		Drilling Cont	Sterling Drilling # 5
Comments	Field: WC	Job Ticket	3458
		Range	30w
		State	KS

GENERAL INFORMATION		Chokes	3/4	Hole Size	7 7/8
Test # 2	Test Date	1/9/2012	Top Recorder #	13310	
Tester	Jimmy Johnny	Conventional Bottom Hole	Mid Recorder #	w1022	
Test Type	Successful Test		Bot Recorder #	w1023	
# of Packers	2.0	Packer Size	6 3/4		
Mud Type	Gel Chem		Mileage	78	Approved By
Mud Weight	8.0	Viscosity	48.0	Standby Time	0
Filtrate		Chlorides	2600	Extra Equipmnt	Jars and Saffy Joint
Drill Collar Len	335.0			Time on Site	3:30 PM
Wght Pipe Len	0			Tool Picked Up	4:45 PM
Formation	Howard	Bottom	3789.0	Tool Layed Dwn	12:45 AM
Interval Top	3726.0	Between	0	Elevation	2797.00
Anchor Len Below	63.0			Start Date/Time	1/9/2012 4:27 AM
Total Depth	3789.0			End Date/Time	1/9/2012 1:03 PM
Blow Type	Weak blow building to strong blow 5 minutes into initial flow period. Weak blow building to strong blow 7 minutes into final flow period. Times: 6, 90, 60, 90				

Feet	Description	Gas	Oil	Water	Mud
180	Heavy mud cut water	0%	0%	67%	120.6ft
440	Mud cut water	0%	0%	89%	391.6ft
230	Salt	0%	0%	100%	230ft
DST Fluids 110000					



Date	Time	Pressure	Temp	
IH	1/9/2012 6:37:10 AM	2.169444	1795.286	99.317
IF1	1/9/2012 6:40:30 AM	2.225	110.953	99.869
IF2	1/9/2012 6:45:00 AM	2.3	166.786	100.033
IS	1/9/2012 8:15:40 AM	3.811111	1041.61	102.144
FF1	1/9/2012 8:17:20 AM	3.838889	222.973	102.027
FF2	1/9/2012 9:15:10 AM	4.802778	464.312	103.817
FS	1/9/2012 10:45:00 AM	6.3	1021.939	103.913
FH	1/9/2012 10:47:10 AM	6.336111	1760.141	104.432

Drill Stem Test #3

RICKETTS TESTING

(620) 326-5830

Page 1

Company: Falcon Exploration Inc.
Address: 125 N Market Ste 1252
CSZ: Wichita, KS 67202
Attn: Dave Williams

Lease Name: Henry Koehn NE
Lease #: 1-13
Legal Desc: NE
Section: 13
Township: 28S
County: Gray
Drilling Cont: Sterling Drilling # 5

Job Ticket: 3458
Range: 30W
State: KS

Comments: Field: WC

GENERAL INFORMATION

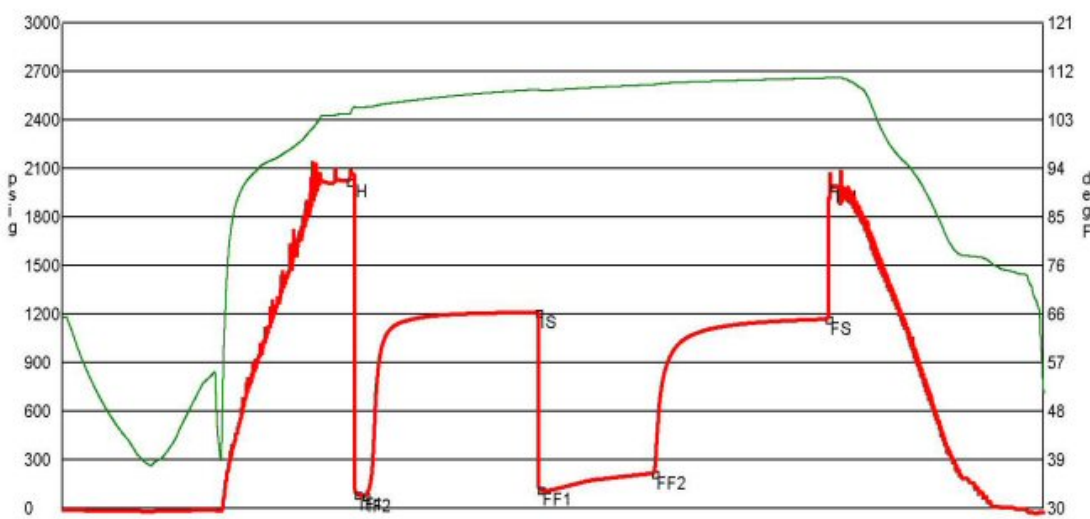
Test #3
Tester: Jimmy Johnny
Test Type: Conventional Bottom Hole
of Packers: 2.0
Mud Type: Gel Chem
Mud Weight: 9.3
Filtrate: 8.0
Drill Collar Len: 335.0
Wght Pipe Len: 0
Formation: Lansing
Interval Top: 4220.0
Anchor Len Below: 40.0
Total Depth: 4260.0
Blow Type: Weak blow building to 11 inches initial flow period. Weak blow building to strong blow 10 minutes into final flow period. Times: 5, 90, 60, 90.

Chokes: 3/4
Hole Size: 7 7/8
Top Recorder #: 13564
Mid Recorder #: w1023
Bott Recorder #: w1119
Mileage: 78
Standby Time: 0
Extra Equipmnt: Jars and Safty Joint
Time on Site: 3:00 AM
Tool Picked Up: 6:15 AM
Tool Layed Down: 2:00 PM
Elevation: 2797.00
Kelley Bushings: 2810.00

RECOVERY

Feet	Description	Gas	Oil	Water	Mud
350	Gas in pipe	100% 350ft	0% 0ft	0% 0ft	0% 0ft
20	Water cut mud	0% 0ft	0% 0ft	12% 2.4ft	88% 17.6ft
370	Mud cut water	0% 0ft	0% 0ft	93% 344.1ft	7% 25.9ft

DST Fluids: 95000



Date	Time	Pressure	Temp	
IH	1/11/2012 8:16:50 AM	2.463889	2022.178	103.889
IF1	1/11/2012 8:21:00 AM	2.533333	86.797	105.106
IF2	1/11/2012 8:25:10 AM	2.602778	75.735	105.16
IS	1/11/2012 9:55:00 AM	4.1	1210.672	108.32
FF1	1/11/2012 9:56:10 AM	4.119444	113.904	108.486
FF2	1/11/2012 10:55:20 AM	5.105556	216.216	109.41
FS	1/11/2012 12:25:30 PM	6.608333	1168.868	110.65
FH	1/11/2012 12:28:10 PM	6.652778	1984.471	110.721

RICKETTS TESTING

(620) 326-5830

Page 1

Company: Falcon Exploration Inc.
Address: 125 N Market Ste 1252
CSZ: Wichita, KS 67202
Attn: Keith Reeves

Lease Name: Henry Koehn NE
Lease #: 1-13
Legal Desc: NW
Section: 13
Township: 28S
County: Gray
Drilling Cont: Sterling Rig # 5

Job Ticket: 3458
Range: 30W
State: KS

Comments: Field: WC

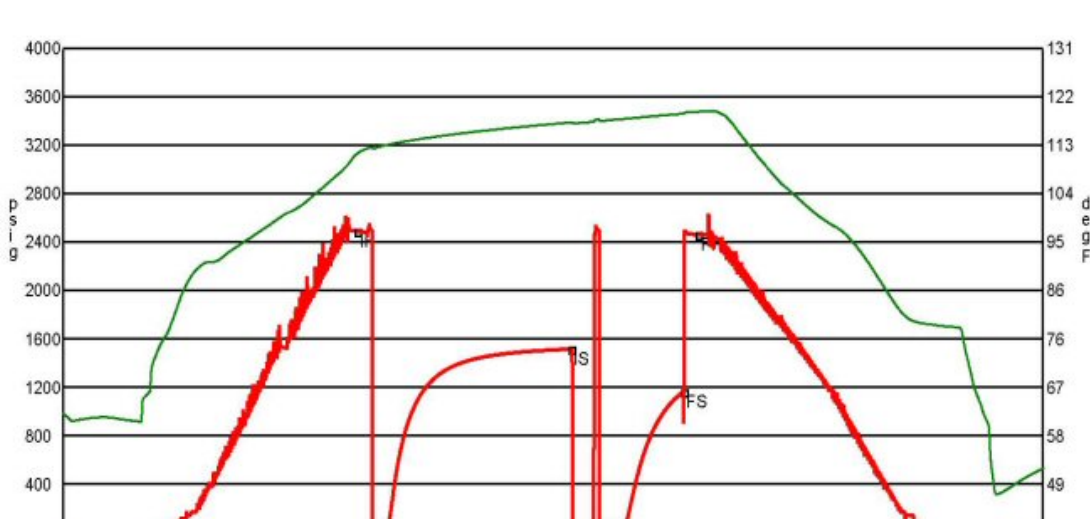
GENERAL INFORMATION

Test #4
Tester: Jimmy Johnny
Test Type: Conventional Bottom Hole
of Packers: 2.0
Mud Type: Gel Chem
Mud Weight: 9.1
Filtrate: 7.2
Drill Collar Len: 335.0
Wght Pipe Len: 0
Formation: St. Louis
Interval Top: 5195.0
Anchor Len Below: 50.0
Total Depth: 5245.0
Blow Type: Weak blow throughout intial flow period. No blow final flow period flushed tool still no blow. Times 5, 90, 23, 30.

Chokes: 3/4
Hole Size: 7 7/8
Top Recorder #: 13564
Mid Recorder #: W1023
Bott Recorder #: W1119
Mileage: 0
Standby Time: 20
Extra Equipmnt: Jars and Safety Joint
Time on Site: 11:30 AM
Tool Picked Up: 3:40 PM
Tool Layed Down: 10:30 PM
Elevation: 2797.00
Kelley Bushings: 2810.00

RECOVERY

Feet	Description	Gas	Oil	Water	Mud
10	Drilling Mud	0% 0ft	0% 0ft	0% 0ft	100% 10ft



Date	Time	Pressure	Temp	
IH	1/14/2012 5:38:00 PM	2.316667	2488.448	111.178
IF1	1/14/2012 5:45:30 PM	2.441667	7.594	112.198
IF2	1/14/2012 5:50:30 PM	2.525	7.077	112.699
IS	1/14/2012 7:20:00 PM	4.016667	1515.168	117.097
FF1	1/14/2012 7:23:00 PM	4.066667	10	116.952
FF2	1/14/2012 7:43:20 PM	4.405556	15.039	117.704
FS	1/14/2012 8:13:30 PM	4.908333	1163.597	118.712
FH	1/14/2012 8:20:30 PM	5.025	2462.592	119.097

ROCK TYPES

	Congl		sdymst		shale, gm		shale, red
	Dolprim		Lmst fw<7		shale, gry		
	Dolsec		Lmst fw7>		Carbon Sh		

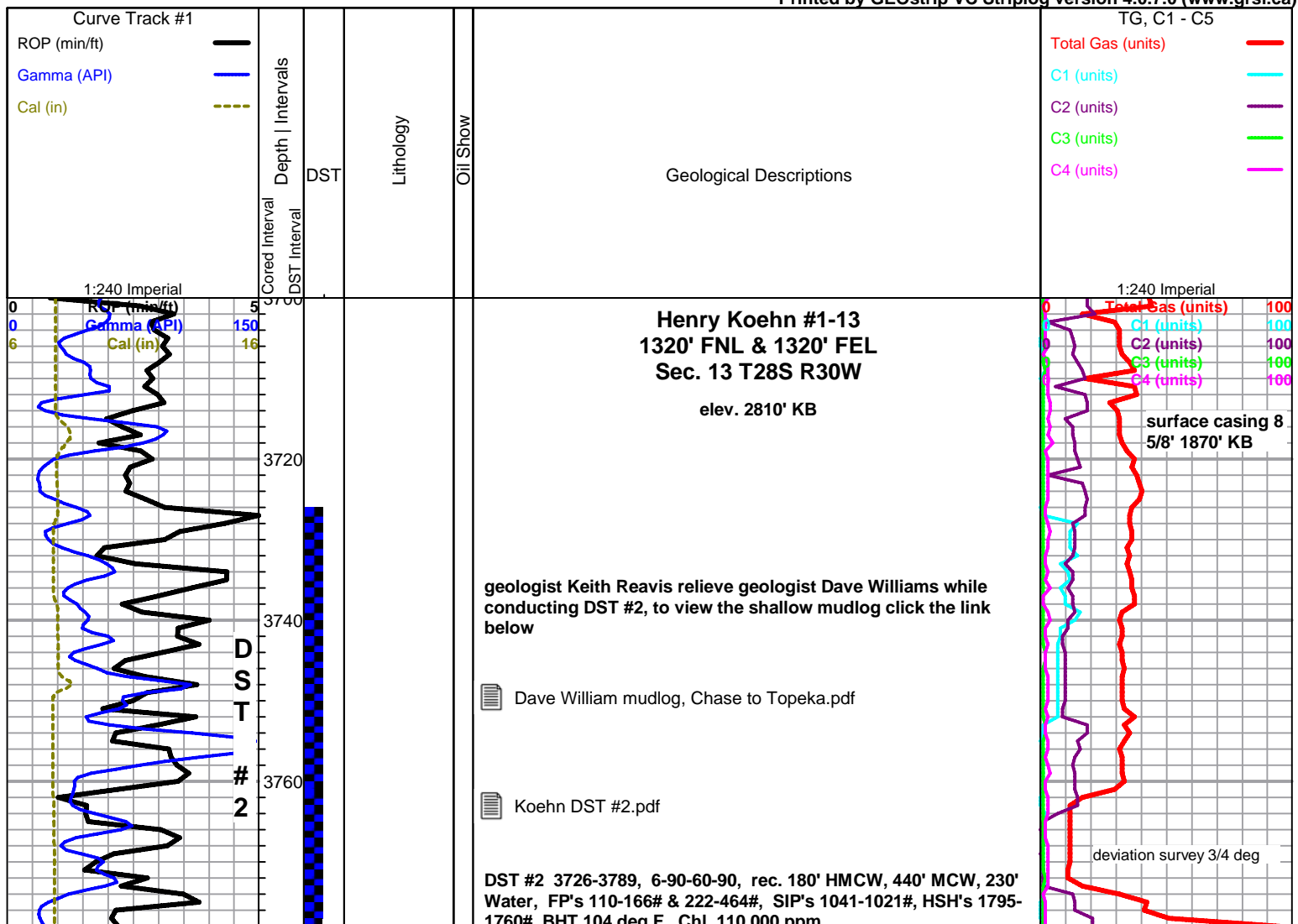
ACCESSORIES

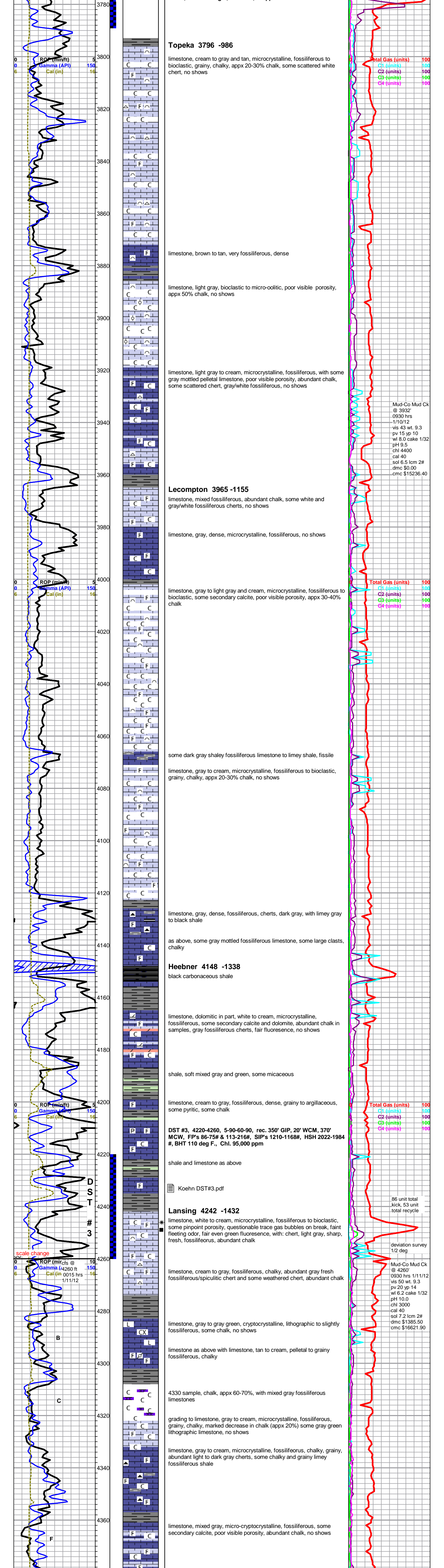
MINERAL	FOSSIL	STRINGER	TEXTURE
— Argillaceous	∩ Bioclastic or Fragmental	● Limestone	C Chalky
▲ Chert, dark	F Fossils < 20%	● Sandstone	CX Cryptocrystalline
∠ Dolomitic	∅ Oolite	● Siltstone	L Lithogr
× Mineral Crystals	∅ Pellets	— Shale	
P Pyrite	∅ Oomoldic	— green shale	
△ Chert White		— red shale	
■ Argillaceous/Shale		— carb shale	

OTHER SYMBOLS

MISC	DST
	Daily Report
	Digital Photo
	Document
	Folder
	Link
	Vertical Log File
	Horizontal Log File
	Core Log File
	Drill Cuttings Rpt

Printed by GEOstrip VC Striplog version 4.0.7.0 (www.grsi.ca)





Topeka 3796 -986

limestone, cream to gray and tan, microcrystalline, fossiliferous to bioclastic, grainy, chalky, appx 20-30% chalk, some scattered white chert, no shows

Total Gas (units) 100
 C1 (units) 100
 C2 (units) 100
 C3 (units) 100
 C4 (units) 100

limestone, brown to tan, very fossiliferous, dense

limestone, light gray, bioclastic to micro-oolitic, poor visible porosity, appx 50% chalk, no shows

limestone, light gray to cream, microcrystalline, fossiliferous, with some gray mottled pelletal limestone, poor visible porosity, abundant chalk, some scattered chert, gray/white fossiliferous, no shows

Mud-Co Mud Ck @ 3932' 0930 hrs 1/10/12 vis 43 wt. 9.3 pv 15 yp 10 wl 8.0 cake 1/32 pH 9.5 chl 4400 cal 40 sol 6.5 lcm 2# dmc \$0.00 cmc \$15236.40

Leocompton 3965 -1155

limestone, mixed fossiliferous, abundant chalk, some white and gray/white fossiliferous cherts, no shows

limestone, gray, dense, microcrystalline, fossiliferous, no shows

limestone, gray to light gray and cream, microcrystalline, fossiliferous to bioclastic, some secondary calcite, poor visible porosity, appx 30-40% chalk

Total Gas (units) 100
 C1 (units) 100
 C2 (units) 100
 C3 (units) 100
 C4 (units) 100

some dark gray shaley fossiliferous limestone to limey shale, fissile

limestone, gray to cream, microcrystalline, fossiliferous to bioclastic, grainy, chalky, appx 20-30% chalk, no shows

limestone, gray, dense, fossiliferous, cherts, dark gray, with limey gray to black shale

as above, some gray mottled fossiliferous limestone, some large clasts, chalky

Heebner 4148 -1338

black carbonaceous shale

limestone, dolomitic in part, white to cream, microcrystalline, fossiliferous, some secondary calcite and dolomite, abundant chalk in samples, gray fossiliferous cherts, fair fluorescence, no shows

shale, soft mixed gray and green, some micaceous

limestone, cream to gray, fossiliferous, dense, grainy to argillaceous, some pyritic, some chalk

Total Gas (units) 100
 C1 (units) 100
 C2 (units) 100
 C3 (units) 100
 C4 (units) 100

DST #3, 4220-4260, 5-90-60-90, rec. 350' GIP, 20' WCM, 370' MCW, FP's 86-75# & 113-216#, SIP's 1210-1168#, HSH 2022-1984 #, BHT 110 deg F., Chl. 95,000 ppm

shale and limestone as above

Koehn DST#3.pdf

Lansing 4242 -1432

limestone, white to cream, microcrystalline, fossiliferous to bioclastic, some pinpoint porosity, questionable trace gas bubbles on break, faint fleeting odor, fair even green fluorescence, with: chert, light gray, sharp, fresh, fossiliferous, abundant chalk

86 unit total kick, 53 unit total recycle

deviation survey 1/2 deg

limestone, cream to gray, fossiliferous, chalky, abundant gray fresh fossiliferous/spiculitic chert and some weathered chert, abundant chalk

Mud-Co Mud Ck @ 4260' 0930 hrs 1/11/12 vis 50 wt. 9.3 pv 20 yp 14 wl 6.2 cake 1/32 pH 10.0 chl 3000 cal 40 sol 7.2 lcm 2# dmc \$1385.50 cmc \$16621.90

limestone, gray to green, microcrystalline, lithographic to slightly fossiliferous, some chalk, no shows

limestone as above with limestone, tan to cream, pelletal to grainy fossiliferous, chalky

4330 sample, chalk, appx 60-70%, with mixed gray fossiliferous limestones

grading to limestone, gray to cream, microcrystalline, fossiliferous, grainy, chalky, marked decrease in chalk (appx 20%) some gray green lithographic limestone, no shows

limestone, gray to cream, microcrystalline, fossiliferous, chalky, grainy, abundant light to dark gray cherts, some chalky and grainy limey fossiliferous shale

limestone, mixed gray, micro-cryptocrystalline, fossiliferous, some secondary calcite, poor visible porosity, abundant chalk, no shows

ROP (min/ft) 5
 Gamma (API) 150
 Cal (in) 16

ROP (min/ft) 5
 Gamma (API) 150
 Cal (in) 16

scale change
 ROP (min/ft) 10
 Gamma (API) 150
 Cal (in) 16

ROP (min/ft) 5
 Gamma (API) 150
 Cal (in) 16

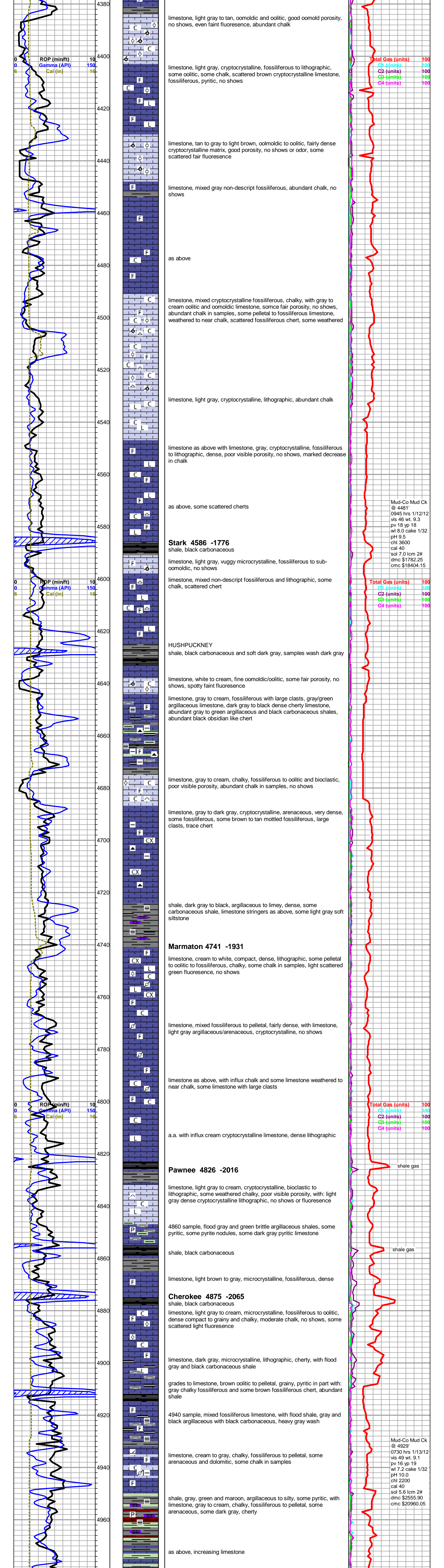
ROP (min/ft) 5
 Gamma (API) 150
 Cal (in) 16

D
S
T

3

B

C



limestone, light gray to tan, oomoldic and oolitic, good oomold porosity, no shows, even faint fluorescence, abundant chalk

limestone, light gray, cryptocrystalline, fossiliferous to lithographic, some oolitic, some chalk, scattered brown cryptocrystalline limestone, fossiliferous, pyritic, no shows

limestone, tan to gray to light brown, oomoldic to oolitic, fairly dense cryptocrystalline matrix, good porosity, no shows or odor, some scattered fair fluorescence

limestone, mixed gray non-descript fossiliferous, abundant chalk, no shows

as above

limestone, mixed cryptocrystalline fossiliferous, chalky, with gray to cream oolitic and oomoldic limestone, some fair porosity, no shows, abundant chalk in samples, some pelletal to fossiliferous limestone, weathered to near chalk, scattered fossiliferous chert, some weathered

limestone, light gray, cryptocrystalline, lithographic, abundant chalk

limestone as above with limestone, gray, cryptocrystalline, fossiliferous to lithographic, dense, poor visible porosity, no shows, marked decrease in chalk

as above, some scattered cherts

Stark 4586 -1776
shale, black carbonaceous

limestone, light gray, vuggy microcrystalline, fossiliferous to sub-oomoldic, no shows

limestone, mixed non-descript fossiliferous and lithographic, some chalk, scattered chert

HUSHPUCKNEY
shale, black carbonaceous and soft dark gray, samples wash dark gray

limestone, white to cream, fine oomoldic/oolitic, some fair porosity, no shows, spotty faint fluorescence

limestone, gray to cream, fossiliferous with large clasts, gray/green argillaceous limestone, dark gray to black dense cherty limestone, abundant gray to green argillaceous and black carbonaceous shales, abundant black obsidian like chert

limestone, gray to cream, chalky, fossiliferous to oolitic and bioclastic, poor visible porosity, abundant chalk in samples, no shows

limestone, gray to dark gray, cryptocrystalline, arenaceous, very dense, some fossiliferous, some brown to tan mottled fossiliferous, large clasts, trace chert

Marmaton 4741 -1931

limestone, cream to white, compact, dense, lithographic, some pelletal to oolitic to fossiliferous, chalky, some chalk in samples, light scattered green fluorescence, no shows

limestone, mixed fossiliferous to pelletal, fairly dense, with limestone, light gray argillaceous/arenaceous, cryptocrystalline, no shows

limestone as above, with influx chalk and some limestone weathered to near chalk, some limestone with large clasts

Pawnee 4826 -2016

limestone, light gray to cream, cryptocrystalline, bioclastic to lithographic, some weathered chalky, poor visible porosity, with: light gray dense cryptocrystalline lithographic, no shows or fluorescence

4860 sample, flood gray and green brittle argillaceous shales, some pyritic, some pyrite nodules, some dark gray pyritic limestone

shale, black carbonaceous

limestone, light brown to gray, microcrystalline, fossiliferous, dense

Cherokee 4875 -2065
shale, black carbonaceous

limestone, light gray to cream, microcrystalline, fossiliferous, oolitic, dense compact to grainy and chalky, moderate chalk, no shows, some scattered light fluorescence

limestone, dark gray, microcrystalline, lithographic, cherty, with flood gray and black carbonaceous shale

grades to limestone, brown oolitic to pelletal, grainy, pyritic in part with: gray chalky fossiliferous and some brown fossiliferous chert, abundant shale

4940 sample, mixed fossiliferous limestone, with flood shale, gray and black argillaceous with black carbonaceous, heavy gray wash

limestone, cream to gray, chalky, fossiliferous to pelletal, some arenaceous and dolomitic, some chalk in samples

shale, gray, green and maroon, argillaceous to silty, some pyritic, with limestone, gray to cream, chalky, fossiliferous to pelletal, some arenaceous, some dark gray, cherty

as above, increasing limestone

Total Gas (units) 100
C1 (units) 100
C2 (units) 100
C3 (units) 100
C4 (units) 100

Total Gas (units) 100
C1 (units) 100
C2 (units) 100
C3 (units) 100
C4 (units) 100

Total Gas (units) 100
C1 (units) 100
C2 (units) 100
C3 (units) 100
C4 (units) 100

Mud-Co Mud Ck @ 4929'
0730 hrs 1/13/12
vis 49 wt. 9.1
pv 16 yp 19
wl 7.2 cake 1/32
pH 10.0
chl 2200
cal 40
sol 5.6 lcm 2#
dmc \$2555.90
cmc \$20960.05

Mud-Co Mud Ck @ 4481'
0945 hrs 1/12/12
vis 46 wt. 9.3
pv 18 yp 18
wl 8.0 cake 1/32
pH 9.5
chl 3600
cal 40
sol 7.0 lcm 2#
dmc \$1782.25
cmc \$18404.15

