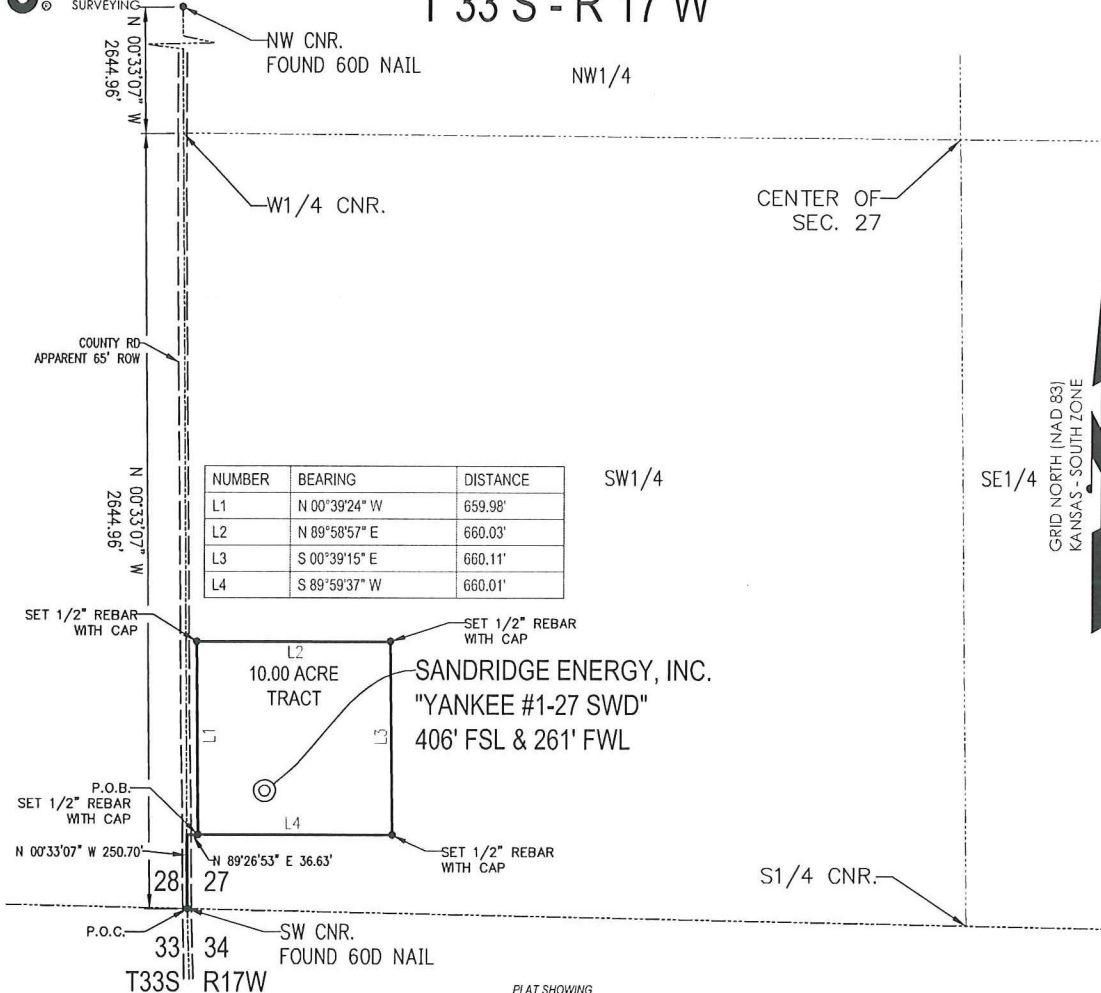




Crafton Tull
 SURVEYING

T 33 S - R 17 W



NUMBER	BEARING	DISTANCE
L1	N 00°39'24" W	659.98'
L2	N 89°58'57" E	660.03'
L3	S 00°39'15" E	660.11'
L4	S 89°59'37" W	660.01'



PLAT SHOWING
**10.00 ACRE TRACT OF LAND IN THE
 SW 1/4 OF SECTION 27, T33S-R17W,
 COMANCHE COUNTY, KANSAS**

METES AND BOUNDS DESCRIPTION (10.00 ACRE TRACT)

PART OF THE SW 1/4 OF SECTION 27, TOWNSHIP 33 SOUTH, RANGE 17 WEST, COMANCHE COUNTY, KANSAS,
 MORE PARTICULARLY DESCRIBED AS FOLLOWS:

COMMENCING AT THE SW CORNER OF SAID SECTION 27;
 THENCE N 00°33'07" W ALONG THE WEST LINE OF SAID SECTION 27, A DISTANCE OF 250.70 FEET;
 THENCE N 89°26'53" E, A DISTANCE OF 36.63 FEET TO THE POINT OF BEGINNING;
 THENCE N 00°39'24" W, A DISTANCE OF 659.98 FEET;
 THENCE N 89°58'57" E, A DISTANCE OF 660.03 FEET;
 THENCE S 00°39'15" E, A DISTANCE OF 660.11 FEET;
 THENCE S 89°59'37" W, A DISTANCE OF 660.01 FEET TO THE POINT OF BEGINNING.

SAID TRACT CONTAINING 10.00 ACRES MORE OR LESS OF LAND AS SURVEYED.

THE COORDINATES ARE BASED ON NAD83 STATE PLANE COORDINATE SYSTEM AS PROCESSED BY OPUS USING THESE STATIONS: DK6487 ICT1 WICHITA ICT1 CORS ARP, DK6489 ICT2 WICHITA ICT2 CORS ARP, & AF9518 LMNO LAMONT CORS ARP ON THE DATE OF 01-05-2012

SURVEYOR'S CERTIFICATE:

I, C. ED GRAY, KANSAS LICENSED PROFESSIONAL LAND SURVEYOR, NO. 1404, DO HEREBY CERTIFY THAT THIS PLAT REPRESENTS THE RESULTS OF A SURVEY MADE ON THE GROUND UNDER MY SUPERVISION.

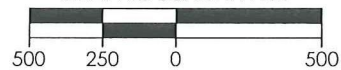
1/19/2012

GENERAL NOTES:

THE TIES AND FOOTAGES SHOWN ON THIS PLAT ARE FROM LINES OF OCCUPATION FROM A SURVEY MADE ON THE GROUND AND / OR BEARING AND DISTANCES FROM THE GENERAL LAND OFFICE PLAT OF THE AREA SHOWN AND MAY NOT BE THE ACTUAL PROPERTY CORNERS. THIS PLAT DOES NOT REPRESENT A TRUE BOUNDARY SURVEY.



GRAPHIC SCALE IN FEET



REVISION	SandRidge		
	"YANKEE #1-27 SWD" PART OF THE SW 1/4 OF SECTION 27, T-33-S, R-17-W PROPOSED DRILL SITE COMANCHE COUNTY, KANSAS		
	SCALE: 1" = 500'	DRAWN BY: S.ANDER	SHEET NO.: 1 OF 1
	PLOT DATE: 01-19-2012		