



**Woolsey Operating Company, LLC**  
Scale 1:240 (5"=100') Imperial  
Measured Depth Log

**Well Name:** Platt GU #5  
**Location:** Section 10 - Township 35 South - Range 12 West  
**License Number:** 15-007-23812-00-00 **Region:** Barber County KS  
**Spud Date:** December 13, 2011 **Drilling Completed:**  
**Surface Coordinates:** 990' FSL, 660' FWL or N 1/2 SW SW  
Hardtner Field  
**Bottom Hole Coordinates:** Verticle Hole

**Ground Elevation (ft):** 1405' **K.B. Elevation (ft):** 1418'  
**Logged Interval (ft):** 4000' **To:** **Total Depth (ft):**  
**Formation:** Kansas City ----> Simpson Group  
**Type of Drilling Fluid:** Chemical Mud

Printed by MUD.LOG from WellSight Systems 1-800-447-1534 [www.WellSight.com](http://www.WellSight.com)

**OPERATOR**

**Company:** Woolsey Operating Company,LLC  
**Address:** 125 N. Market, Suite 1000  
Wichita, KS 67202

**GEOLOGIST**

**Name:** Bill Klaver  
**Company:** Woolsey Operating Co. LLC  
**Address:** 125 N. Market, Wichita Kansas, 67202

## COMMENTS

Surface Casing: Set 5 joints of 10 3/4' X 32.75#/ft new casing to 216' KB (tally 200') with 240 sx Class A, 2% gel, 3% cc. Cement did circulate. Lost returns, ran 20 joints of 8 7/8" X 23#/ft new casing to 896' KB, (tally 882') with 100 sx Class A, 2% gel, 3% cc. Cement did not circulate.

Production Casing: 5 1/2" X 16.5#/ft

Deviation Surveys: 1/2 at 220', 1/2 at 522', 1/2 at 900', 1/2 at 1523', 1/2 at 2022', 1/2 at 2526', 1/2 at 3060', 3/4 at 3625', 1 at 4126', 2 at 4598'. Additional surveys see detail.

Pipe Strap @

Duke Drilling Rig 7 Bit Record:

#1 14 3/4" HTC CT-C1 in at 0' out at 217', 217' in 3.25 hours.

#2 7 7/8" HTC DP506F in at 217', out at

Gas Detector: Woolsey Operating Co. Gas Trailer #2

Mud System: Mud-Co. Brad Bortz, Engineer

Open Hole Tests:

OH Logs: Superior Well Service: Dual Induction Laterolog w/SP, CNL-FDC w/PE, Gamma Ray and Caliper.

In House Geologist: Dean Pattisson

Draw Works: National 370

Mud Pump: National K-500 6"X15"

## DSTs

## CREWS

Gaylen Roach, Tool Pusher

Craig Mertens, Morning

Shane Meitler, Days

Steven "Skippy" Green, Evening



from 4600' to rotary total depth and delivered to the Survey at the completion of the test.

7 am Daily Progress:

December 13, 2011 MIRT/SPUD  
December 14, 2011 WOC, drill plug 8 am  
December 15, 2011 Running 8 5/8"  
December 16, 2011 Drilling at 1485'  
December 17, 2011 Drilling at 2985'  
December 18, 2011 Drilling at 4570'  
December 19, 2011  
December 20, 2011

wt. 8.9 vis. 50

Deviation/4126'  
1 degree

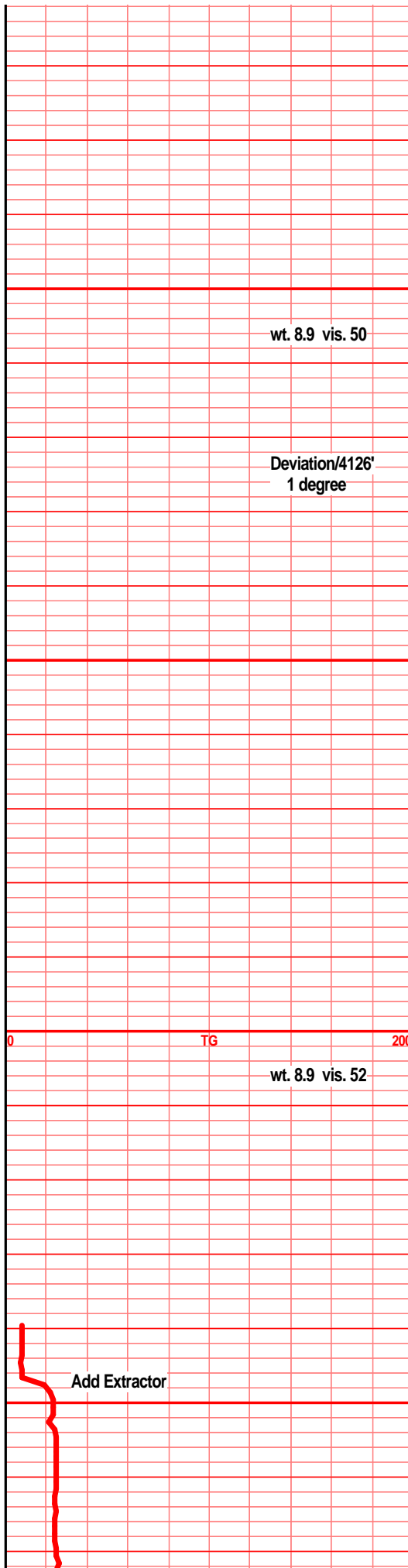
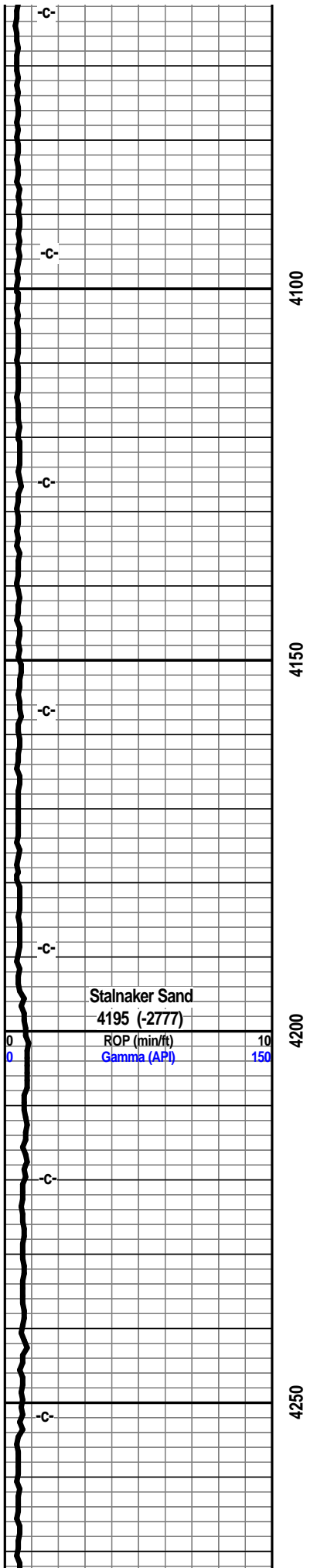
E-Log Tops:

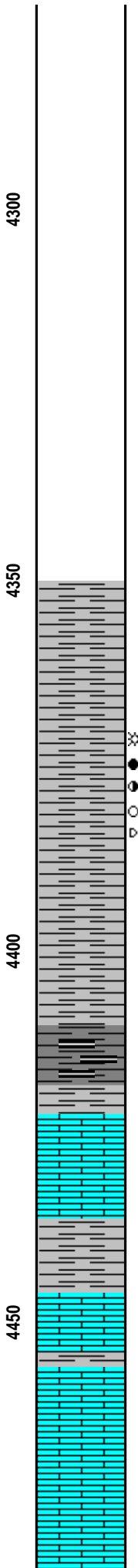
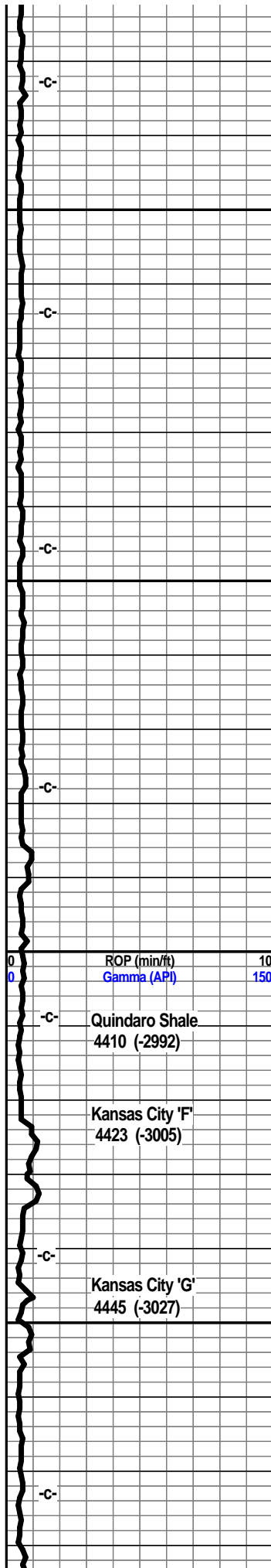
Herington  
Onaga  
Wabaunsee  
Topeka  
Lecompton  
Kanwaka  
Elgin Sand  
Heebner  
Toronto  
Douglas Grp  
Douglas Shale  
Haskell  
Stalnaker  
Quindaro Shale  
Kansas City 'F'  
Kansas City 'G'  
Kansas City 'I'  
Stark  
Swope  
Hushpuckney  
Hertha  
B/Kansas City  
Altamont

TG

wt. 8.9 vis. 52

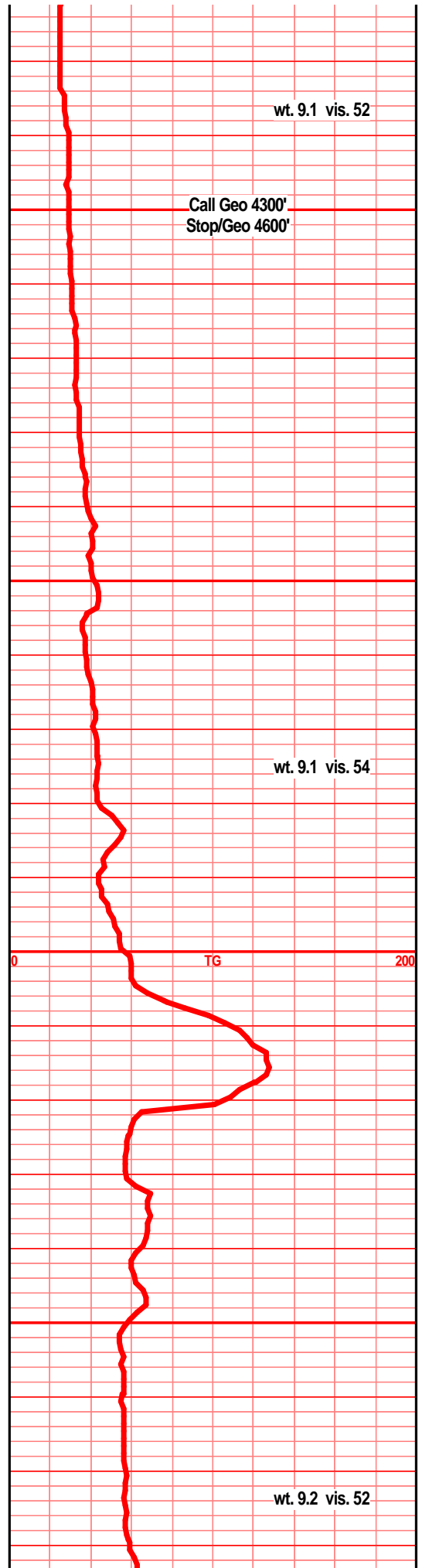
Add Extractor

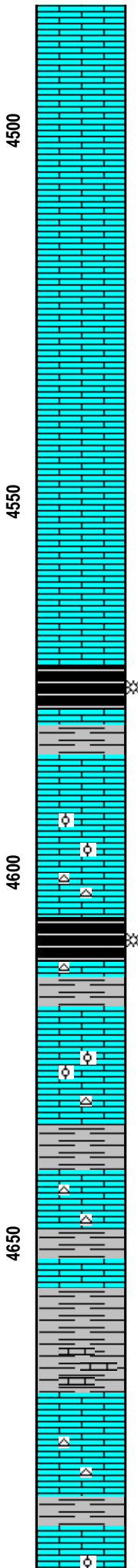
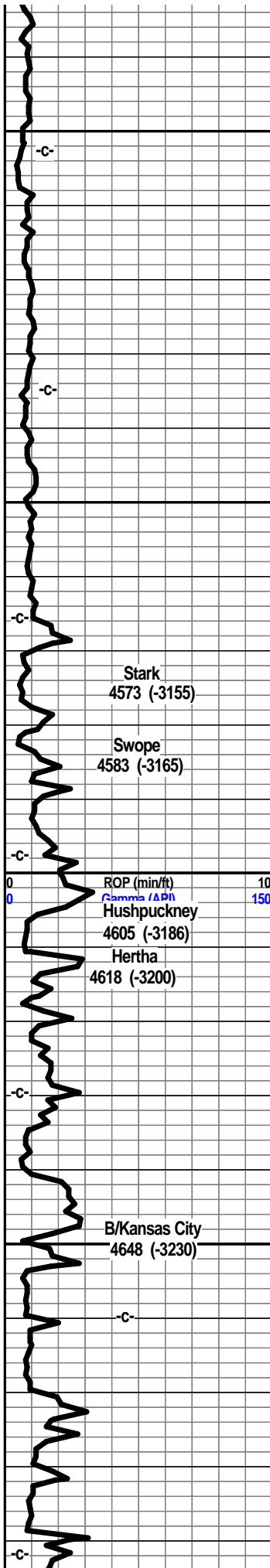




- Pawnee
- Cherokee Grp
- Cherokee Sand
- Mississippi
- C3
- C2A
- C2
- C1
- Osage
- Northview Shale
- Compton
- Kinderhook
- Woodford
- Misener
- Viola
- Simpson Group
- Simpson 'D' Sand
- Wilcox Sand
- McLish Sand
- RTD

- Oil/Gas Show Legend
- Gas
  - Even Stain/Saturation
  - Spotted Stain/Saturation
  - Questionable
  - Dead/Gilsonitic



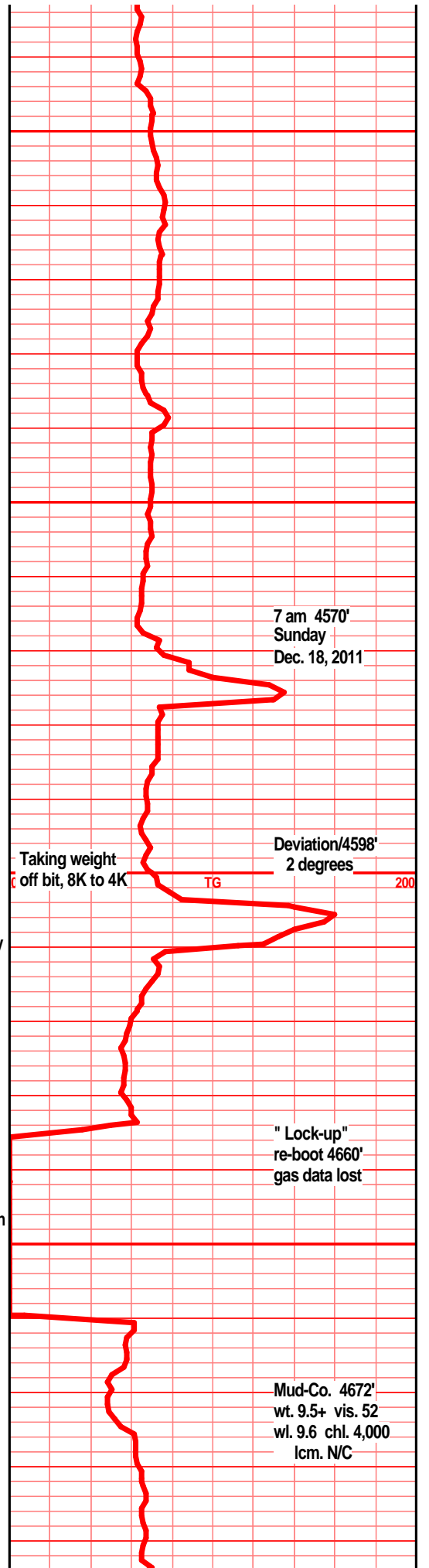


shl gry blk, bk carb, wxy grsy, gas bubs. Ist wht crm buff f sli med xln gran flky, sub chlky, foss frags, pelletal, tr micro ool, calc xln fill, tr chrt wht shrp frsh opa

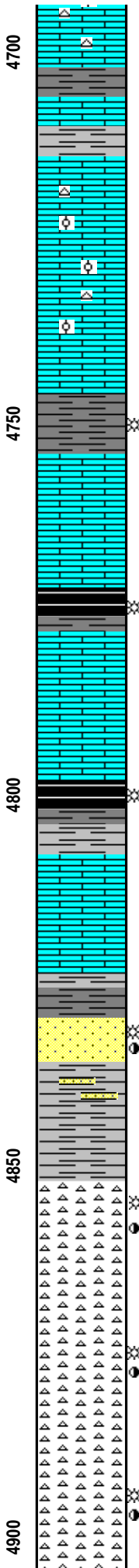
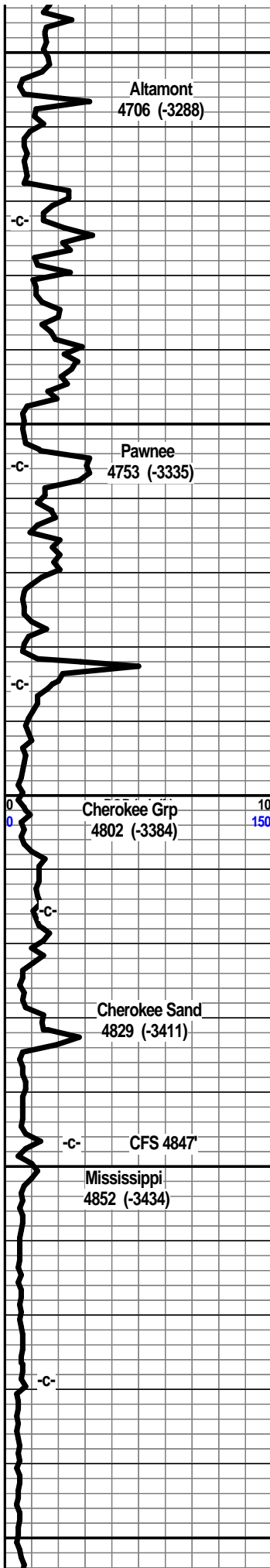
shl gry blk carg, wxy, grsy, abun gas bubs, tr gry silty calc, Ist wht off wht buff tan f sli med xln, blk flky, sub chlky, foss frags, pelletal, micro ool in prt, calc xln fill

shl gry gry brn calc, silty, gritty, Ist tan crm buff tr lt brn f sli med lxn gran flky sub chlky foss frags, foss ool, calc xln fill, chrt tan wht shrp frsh opa

Ist crm tna buff, lt gry brn in prt, f sli med xln, blk flky, sub chlky, foss frags, chrt wht off wht shrp frsh opa blk, Ist gry med gry silty gritty, calc in prt,



Mud-Co. 4672' wt. 9.5+ vis. 52 wl. 9.6 chl. 4,000 lcm. N/C



shl gry med gry gry green, silty gritty sndy in prt, calc in prt, lst tan buff wht f sli med xln blkly flky chlky gran, calc xln fill, tr chrt wht lt gry shrp frsh foss

lst crm buff tan f xln blkly flky, tr sub chlky, mstly dns hrd blkly, foss frags, micro ool, pettetal, chrt wht off wht shrp frsh opa

shl gry med gry blk, tr blk carb text, lst wht off wht buff, f xln blkly ang dns hrd, tr sub chlky, foss frags, micro ool, tr pelletal

shl gry drk gry blk, blk carb, wxy grsy, gas bubs, lst tan dull gry tan f vf xln dns hrd blkly, tr sub chlky, tr micro foss frags,

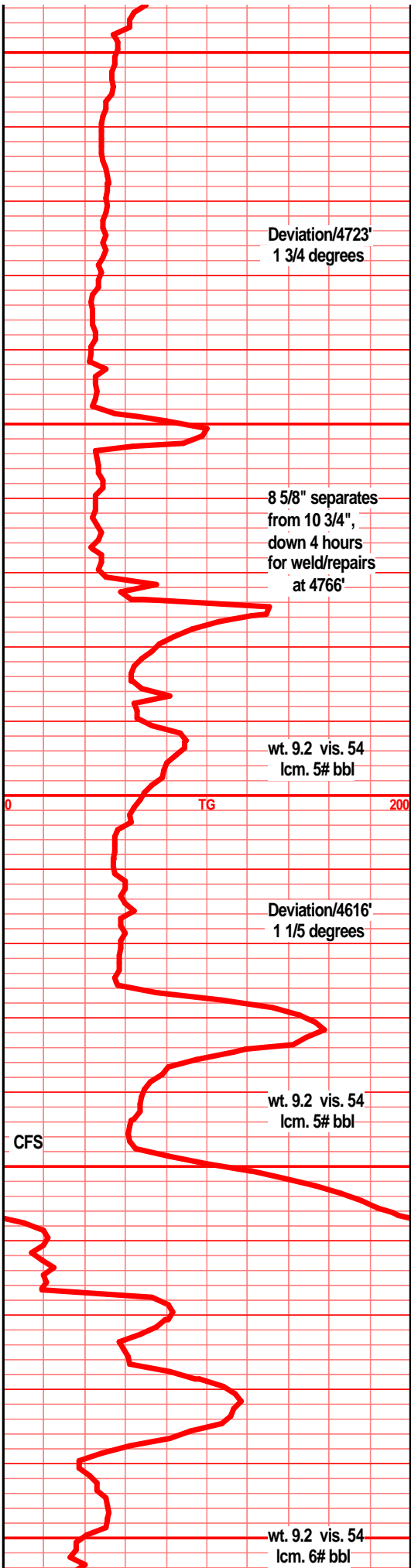
shl gry med gry silty gritty calc, much blk carb, wxy grsy, gas bubs, lst tan buff, dull tan lt gry f vf xln dns hrd, blkly tr sub chlky, micro foss frags, tr chrt wht shrp frsh opa blkly tr foss

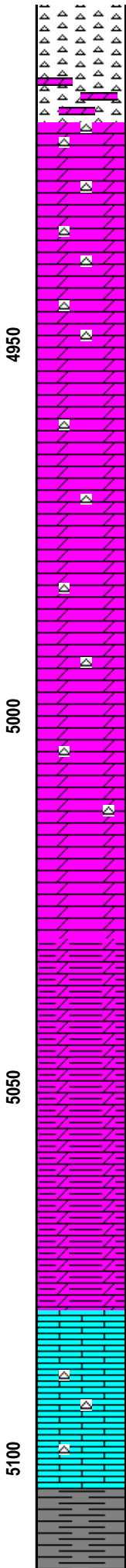
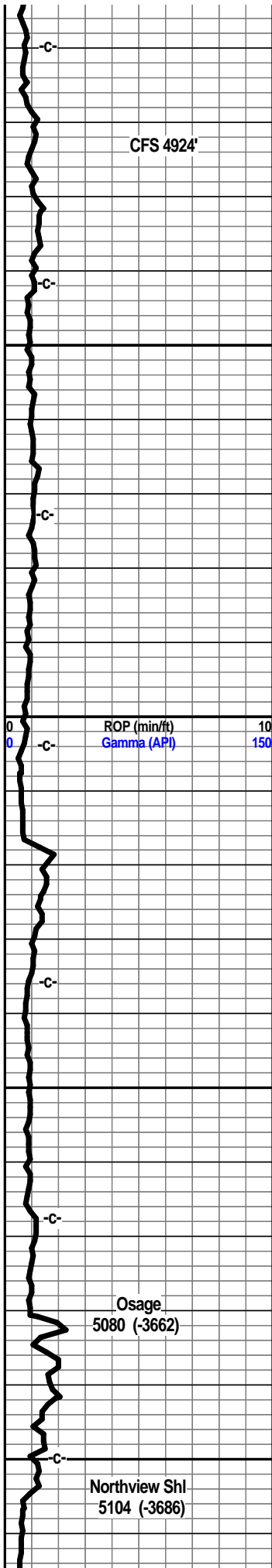
sst drk brn, brn blk, f vf grnd, sub ang, rded grns, v/w srtld, sub fria, well to prly cem, calc cem, tr clay fill, tr arg, tr calc in prt, tr inter grain por, abun gas bubs, drk blk stain, filmy SFO/brken, nodor

chrt off wht lt tan gry, tr smokey, shrp frsh, blkly opa, with wht soft trip text edge, lt green clay fill, wht lt tan brn trip spongy text along frsh chrt edge, pp moldic por, blk stain, blk SFO w/brkn, gas bubs, fair odor, dull UV

chrt wht off wht gry tan mott, weath, gran, soft, sub chlky trip text, weath trip spongy text, weath trip text along shrp frsh chrt edge, gd pp/vug/moldic por, fair odor, blk stain, drk brn/blk SFO, gas bubs,

chrt off wht lt gry tr smokey, incr frsh with depth, chrt aa with weath sli chlky trip edge text, pp/moldic/vug por, fair stain, brn stain, SFO, gas bubs, tr druzy qrtz, fair to gd odor, dull UV, chrt tan brn mott, weath trip text, pp/gd moldic/vug





por, SFO, abun gas bubs, dull UV, sho is less dark, less grsy, chrt lt gry off wht shrp, frsh, transl, foss, blk opa

chrt aa, dolo gry green, f vf xln dns hrd blk, silic in prt, glau in prt, chrt, chrt inclu, tan brn stain, SFO along chrt/dolo contact,

dolo lt gry f vf xln gran silty gritty, silic text, blk dns hrd, chrt in prt, chrt wht lt gry shrp frsh opa, tr stain, tr gas bubs, dull spotted UV, nodor

dolo lt gry tr drkr, f vf xln dns hrd blk, silic in prt, tr micr suc, silty gritty, chrt in prt, tr chrt wht off wht gry, shrp frsh opa transl, tr tan brn stain, nodor

dolo lt gry f vf xln blk dns hrd gritty, silty, tr silic text, chrt in prt, chrt wht lt gry shrp frsh, opa

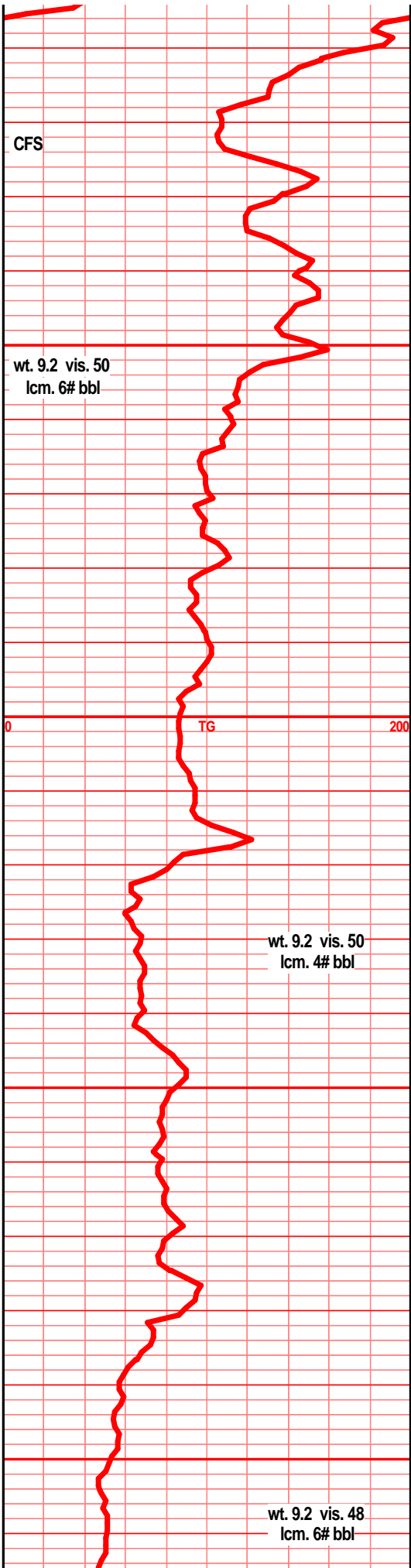
dolo gry med gry, drkr with depth, f vf xln dns hrd blk, incr silty gritty arg, tr chrt, lt gry smokey shrp frsh opa

dolo, silty gritty calc dolostn, f vf xln dns hrd blk, arg, incr drkr w/depth, silty gran,

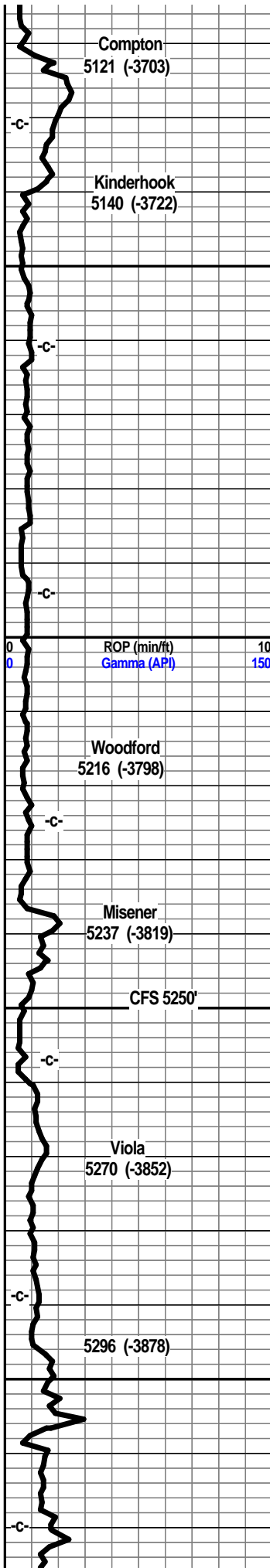
dolo, f vf xln, tr silic text in prt, silty calc dolostn in prt, gry drk gry, silty, gritty, f xln dns hrd blk arg

dolo, gry drk gry, silty, gritty, calc dolostn in prt, arg, blk, f vf xln, tr silic text in prt

lst wht off wht, f sli med xln ran sub chlky tr micro foss frags, chrt in prt, chrt wht lt gry shrp frsh opa, shl gry green drk gry green silty gritty







shl gry dkr gry green/blk, silty gritty calc in prt, lst wht off wht, tr gry lt green tint, f sli med xln, blkly flky sub chlky, tr foss frags,

shl gry grk gry blk, drk gry green, silty, gritty, bedded, pyritic bands

shl drk gry blk, gry green, silty gritty, bedded, tr pyritic bands

shl gry drk gry, brn blk, silty, sli gritty, pyritic in prt, tr gas bubs

shl drk brn, reddish brn/blk, dolo in prt, silty, gritty, dull copper ppt, blk carb text in prt, abun gas bubs

shl drk gry, brn reddish brn/blk, tr blk carb text, pyritic, copper nodules, dolo in prt, silty gritty, bleeding gas

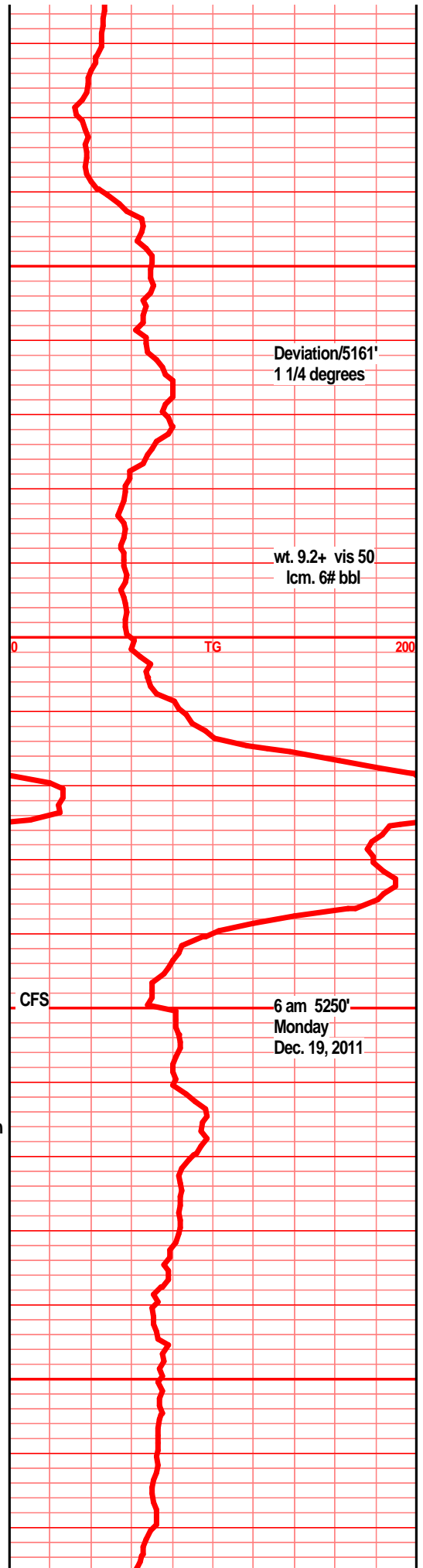
sst wht clr clstrs, f sli med grnd, ang qtz grns, prly srted, calc fill, min fill, tr calc xln fill, tr arg, tr carb foss fill, tr pyritic, inter grn por, no show

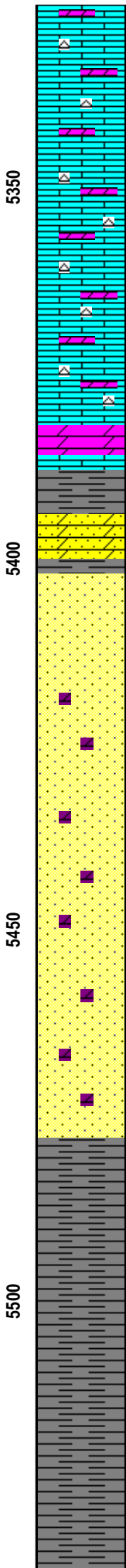
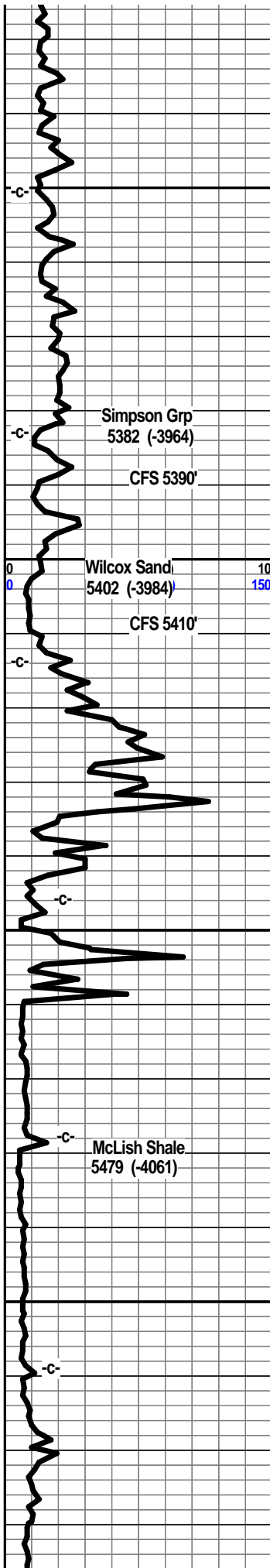
shl gry med drk gry, lt gry green, silty gritty, soft mushy, fnly gritty, sny, tr snd grn inclu, pyritic in prt

shl dolo calc shls, gry med gry, soft, gran mushy, gritty, gran,

lst wht off wht, gry lt green tint, f sli med xln, blkly, flky, tr sub chlky, inter xln por, tr pyritic fill, chrtly in prt, chrt wht shrp frsh opaq

lst wht off wht lt gry tint, f med xln, blkly flky, ang, tr sub chlky, tr foss frags, vis inter xln por,





tr crs calc xln fill, tr min/pyritic fill, chrty in prt, chrt wht shrp frsh opa q transl

lst, dolo in prt, tan dull tan brn, f vf xln, blkly dns hrd, ang, tr sub chlky, tr foss frags, gran, chrty, chrt dull gry tan shrp frsh opa q foss

lst dolo in prt, gry dull tan, tan gry/brn mott, f vf xln gran, blkly, dns hrd, sub chlky in prt, tr suc text, chrty in prt, chrt dull tan gry shrp frsh opa q

dolo tan brn f sli med xln, gran, soft, sli suc text, tr sndy text, sub chlky in prt, fair inter xln por, pp/moldic por, brn stain, sli odor, SFO, dull UV.

shl green, teal green, slick, wxy, snd grn inclu, pyritic, sst gry green f grnd, sub ang grns, prly srted, w/cem, silic cem, min fill pyritic

sst clr lt tan lt gry clstrs, f grnd, sub ang/rded grns, w/srtd, prly cem, fria, inter grn por, min fill, tr clay fill, arg, flky dead stain, nodor, no live sho

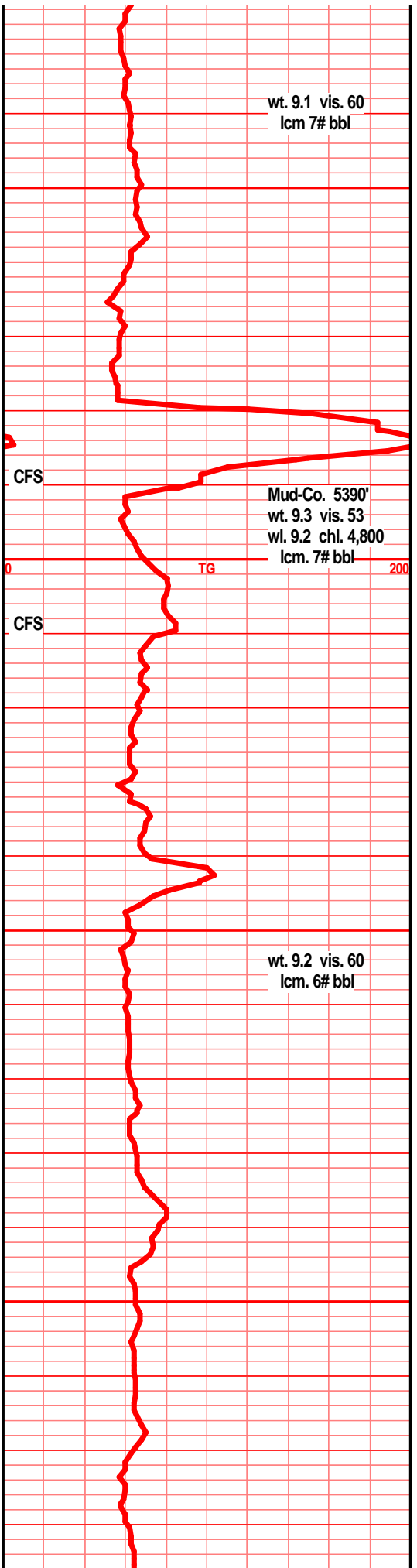
sst wht lt gry clstrs, f grnd, sub ang/sub rded grns, w/srtd, fair to w/cem, sub fria, inter grn por, tr min fill, tr clay fill, tr tan brn dolo xln fill, blk dead flky stain, NSFO, nodor, no live show

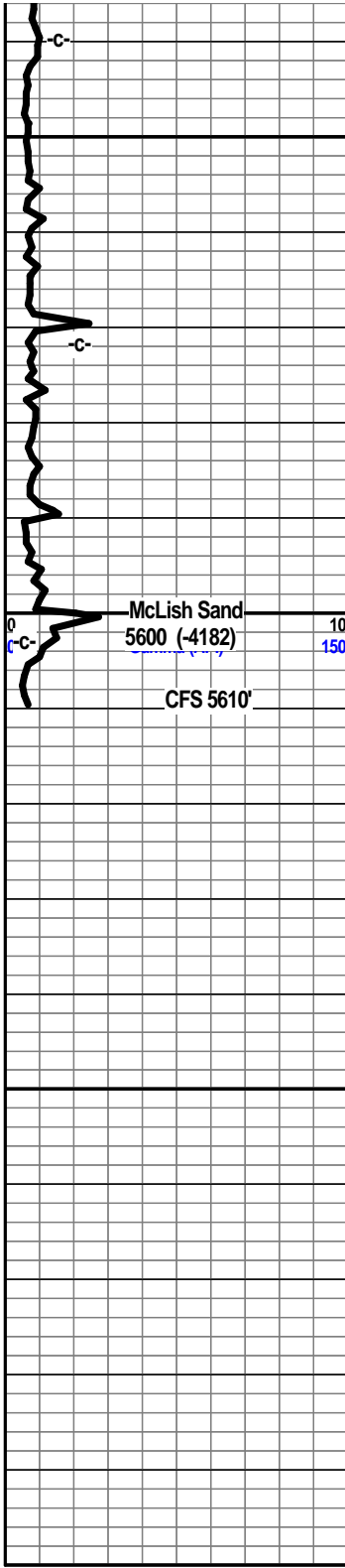
sst wth lt gry, tan brn tint clstrs, f grnd, sub ang/sub rded grns, w/srtd, sub fria, prly to fair cem, tr calc cem, tr tan brn dolo xln fill, min fill in prt, dead blk gilsonitic flky stain, no live show

sst wht off wht tr lt gry clstrs f grnd, sub ang, tr sub rded grns, w/srtd, prly cem, silic cem, fria to sub fria, inter grain por, min fill, tr tan lt brn dolo xln fill, tr clay fill, arg, blk dead flky stain NS

shl gry lt gry green teal green, silty gritty, sndy, snd grn inclu, glau

shl gry lt gry green, teal green, silty, sndy, gritty, glau, abun snd grn inclu





shl gry drk gry green, teal green, silty sndy, gritty, glau, snd grn inclu

shl gry me gry, gry green, teal green, silty gritty, sndy, snd grn inclu, glau, pyritic

sst clr, tan, lt gry, tr brn clstrs, f sli med grnd, sub rded/rded grns, prly srtd, vry prly srtd in prt, sub fria, mstly tite dns blkly clstrs, clay fill, clay clasts, tr tan brn dolo fill, min fill, glau, vry pryitic in prt, tr blk dead gilsonitic stain, no live show

Woolsey Operation Company LLC  
 Platt Gu #4  
 990' FSL, 660' FWL  
 N 1/2 SW SW  
 10-T35S-R12W  
 Barber County, Kansas  
 1405' GL 1418' KB  
 API 15-007-23812 00-00

