



## DRILL STEM TEST REPORT

Prepared For: **Captiva II L.L.C**

445 Union Blvd Suite 208 Lakewood CO 80228

ATTN: Bruce Ard

**7-22s-16w Pawnee**

**Eakin #6-7**

Start Date: 2011.11.23 @ 00:50:00

End Date: 2011.11.23 @ 07:45:30

Job Ticket #: 18659                      DST #: 1

Superior Testers Enterprises LLC  
PO Box 138 Great Bend KS 67530  
1-800-792-6902

Printed: 2011.11.23 @ 08:05:29



# DRILL STEM TEST REPORT

Captiva II L.L.C

**Eakin #6-7**

445 Union Blvd Suite 208 Lakewood CO 80228

**7-22s-16w Pawnee**

Job Ticket: 18659

**DST#: 1**

ATTN: Bruce Ard

Test Start: 2011.11.23 @ 00:50:00

## GENERAL INFORMATION:

Formation: **Arbuckle**

Deviated: No Whipstock: ft (KB)

Time Tool Opened: 03:03:30

Time Test Ended: 07:45:30

Test Type: Conventional Bottom Hole (Initial)

Tester: Jared Scheck

Unit No: 3320-GB-60

**Interval: 3883.00 ft (KB) To 3905.00 ft (KB) (TVD)**

Reference Elevations: 2017.00 ft (KB)

Total Depth: 3905.00 ft (KB) (TVD)

2006.00 ft (CF)

Hole Diameter: 7.88 inches Hole Condition: Fair

KB to GR/CF: 11.00 ft

**Serial #: 8419 Inside**

Press @ RunDepth: 1819.89 psia @ 3901.00 ft (KB)

Capacity: 5000.00 psia

Start Date: 2011.11.23

End Date: 2011.11.23

Last Calib.: 2011.11.23

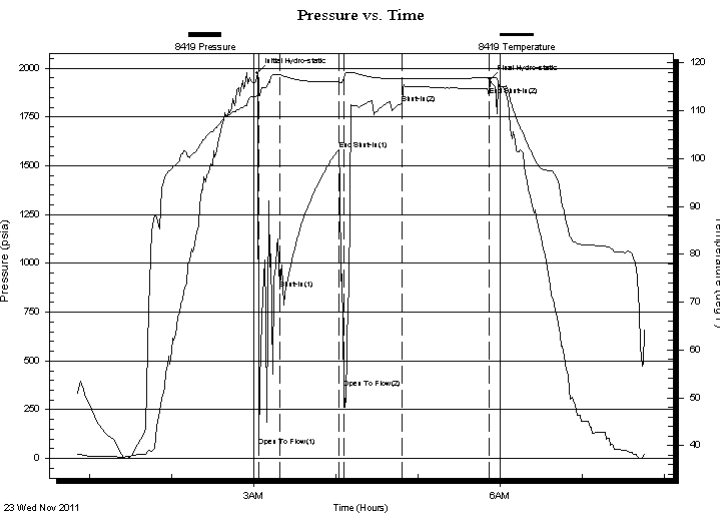
Start Time: 00:50:00

End Time: 07:45:30

Time On Btm: 2011.11.23 @ 03:02:30

Time Off Btm: 2011.11.23 @ 05:52:30

**TEST COMMENT:** 1st Opening 15 Minutes-Strong blow built bottom of bucket in 6 1/2 minutes  
 1st Shut-in 45 Minutes-No blow back  
 2nd Opening 45 Minutes-Weak blow built 6 inches into water in 20 minutes blow died off  
 2nd Shut-in 60 Minutes-No blow back



## PRESSURE SUMMARY

Time (Min.)	Pressure (psia)	Temp (deg F)	Annotation
0	1977.00	113.36	Initial Hydro-static
1	62.74	113.12	Open To Flow (1)
16	868.67	117.46	Shut-In(1)
60	1583.35	116.02	End Shut-In(1)
63	361.05	116.75	Open To Flow (2)
106	1819.89	116.63	Shut-In(2)
169	1859.46	116.90	End Shut-In(2)
170	1942.62	116.91	Final Hydro-static

## Recovery

Length (ft)	Description	Volume (bbl)
360.00	Mud	3.14

## Gas Rates

Choke (inches)	Pressure (psia)	Gas Rate (Mcf/d)



# DRILL STEM TEST REPORT

Captiva II L.L.C

**Eakin #6-7**

445 Union Blvd Suite 208 Lakewood CO 80228

**7-22s-16w Pawnee**

Job Ticket: 18659

**DST#: 1**

ATTN: Bruce Ard

Test Start: 2011.11.23 @ 00:50:00

## GENERAL INFORMATION:

Formation: **Arbuckle**

Deviated: No Whipstock: ft (KB)

Time Tool Opened: 03:03:30

Time Test Ended: 07:45:30

Test Type: Conventional Bottom Hole (Initial)

Tester: Jared Scheck

Unit No: 3320-GB-60

**Interval: 3883.00 ft (KB) To 3905.00 ft (KB) (TVD)**

Reference Elevations: 2017.00 ft (KB)

Total Depth: 3905.00 ft (KB) (TVD)

2006.00 ft (CF)

Hole Diameter: 7.88 inches Hole Condition: Fair

KB to GR/CF: 11.00 ft

**Serial #: 8524 Outside**

Press @ Run Depth: 1887.12 psia @ 3902.00 ft (KB)

Capacity: 5000.00 psia

Start Date: 2011.11.23

End Date: 2011.11.23

Last Calib.: 2011.11.23

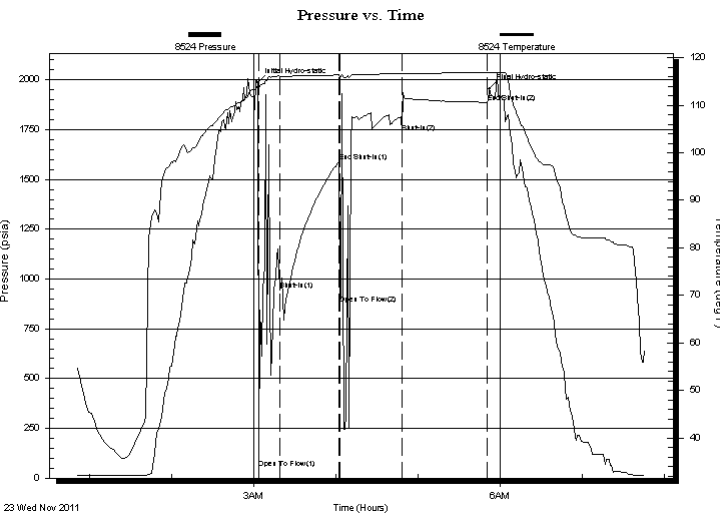
Start Time: 00:50:00

End Time: 07:45:30

Time On Btm: 2011.11.23 @ 03:02:30

Time Off Btm: 2011.11.23 @ 05:52:00

**TEST COMMENT:** 1st Opening 15 Minutes-Strong blow built bottom of bucket in 6 1/2 minutes  
 1st Shut-in 45 Minutes-No blow back  
 2nd Opening 45 Minutes-Weak blow built 6 inches into water in 20 minutes blow died off  
 2nd Shut-in 60 Minutes-No blow back



## PRESSURE SUMMARY

Time (Min.)	Pressure (psia)	Temp (deg F)	Annotation
0	1987.03	114.10	Initial Hydro-static
1	47.48	113.52	Open To Flow (1)
17	944.59	116.08	Shut-In(1)
60	1588.83	116.37	End Shut-In(1)
60	874.18	116.13	Open To Flow (2)
106	1734.25	116.60	Shut-In(2)
168	1887.12	116.91	End Shut-In(2)
170	1955.67	116.85	Final Hydro-static

## Recovery

Length (ft)	Description	Volume (bbl)
360.00	Mud	3.14

## Gas Rates

Choke (inches)	Pressure (psia)	Gas Rate (Mcf/d)



# DRILL STEM TEST REPORT

**TOOL DIAGRAM**

Captiva II L.L.C

**Eakin #6-7**

445 Union Blvd Suite 208 Lakewood CO 80228

**7-22s-16w Pawnee**

Job Ticket: 18659

**DST#: 1**

ATTN: Bruce Ard

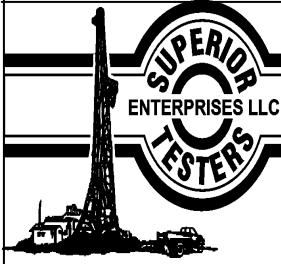
Test Start: 2011.11.23 @ 00:50:00

## Tool Information

Drill Pipe:	Length: 3673.00 ft	Diameter: 3.80 inches	Volume: 51.52 bbl	Tool Weight: 1000.00 lb
Heavy Wt. Pipe:	Length: 0.00 ft	Diameter: 0.00 inches	Volume: 0.00 bbl	Weight set on Packer: 20000.00 lb
Drill Collar:	Length: 210.00 ft	Diameter: 2.25 inches	Volume: 1.03 bbl	Weight to Pull Loose: 75000.00 lb
			<u>Total Volume: 52.55 bbl</u>	Tool Chased 3.00 ft
Drill Pipe Above KB:	28.00 ft			String Weight: Initial 68000.00 lb
Depth to Top Packer:	3883.00 ft			Final 68000.00 lb
Depth to Bottom Packer:	ft			
Interval between Packers:	22.00 ft			
Tool Length:	50.00 ft			
Number of Packers:	2	Diameter: 6.75 inches		

Tool Comments: Ruined packer

Tool Description	Length (ft)	Serial No.	Position	Depth (ft)	Accum. Lengths
SHut-InTool	5.00		Inside	3860.00	
Hydraulic Tool	5.00			3865.00	
Jars	6.00			3871.00	
Safety Joint	2.00			3873.00	
Packer	5.00			3878.00	28.00 Bottom Of Top Packer
Packer	5.00			3883.00	
Anchor	17.00			3900.00	
Recorder	1.00	8419	Inside	3901.00	
Recorder	1.00	8524	Outside	3902.00	
Bullnose	3.00			3905.00	22.00 Bottom Packers & Anchor
<b>Total Tool Length:</b>	<b>50.00</b>				



# DRILL STEM TEST REPORT

## FLUID SUMMARY

Captiva II L.L.C

**Eakin #6-7**

445 Union Blvd Suite 208 Lakewood CO 80228

**7-22s-16w Pawnee**

Job Ticket: 18659

**DST#: 1**

ATTN: Bruce Ard

Test Start: 2011.11.23 @ 00:50:00

### Mud and Cushion Information

Mud Type: Gel Chem

Cushion Type:

Oil API:

deg API

Mud Weight: 9.00 lb/gal

Cushion Length:

ft

Water Salinity:

ppm

Viscosity: 51.00 sec/qt

Cushion Volume:

bbbl

Water Loss: 7.20 in<sup>3</sup>

Gas Cushion Type:

Resistivity: ohm.m

Gas Cushion Pressure:

psia

Salinity: 5800.00 ppm

Filter Cake: 1.00 inches

### Recovery Information

#### Recovery Table

Length ft	Description	Volume bbl
360.00	Mud	3.137

Total Length: 360.00 ft      Total Volume: 3.137 bbl

Num Fluid Samples: 0

Num Gas Bombs: 0

Serial #:

Laboratory Name:

Laboratory Location:

Recovery Comments: Ruined packer/Had plugging throughout test

Serial #: 8419

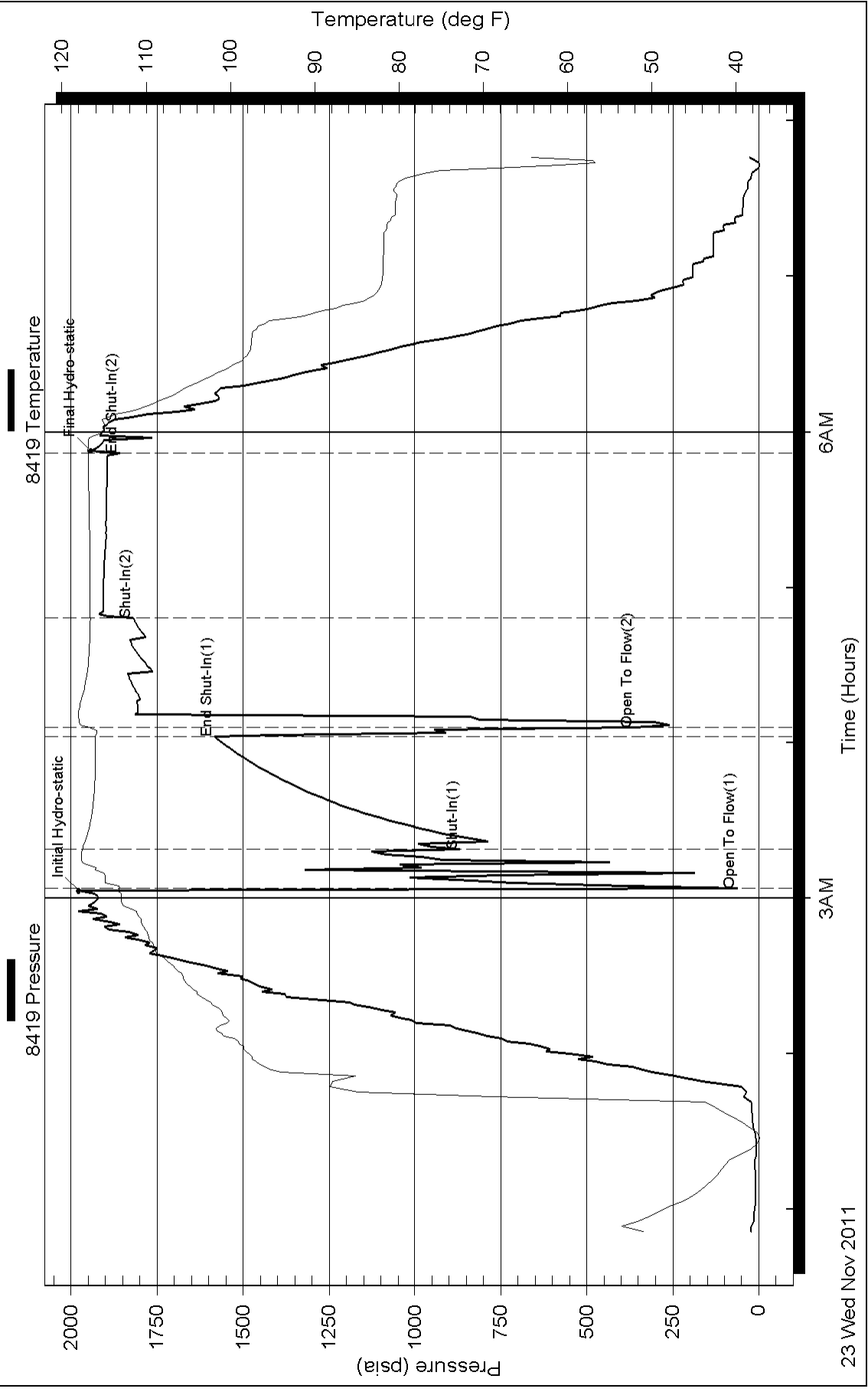
Inside

Captiva II L.L.C

7-22s-16w Pawnee

DST Test Number: 1

### Pressure vs. Time



23 Wed Nov 2011

6AM

3AM

Time (Hours)

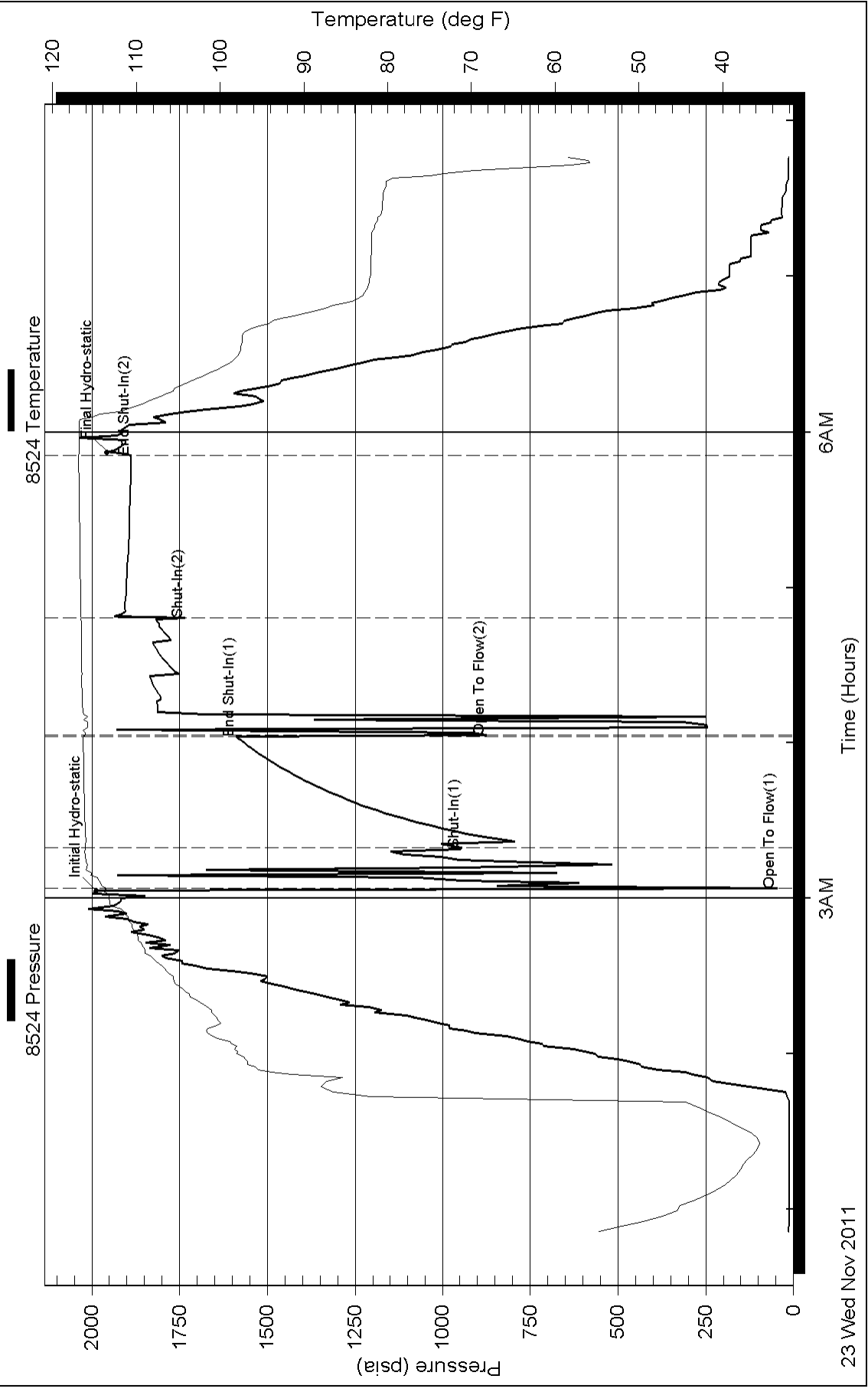
Serial #: 8524

Outside Captiva II L.L.C

7-22s-16w Pawnee

DST Test Number: 1

### Pressure vs. Time



23 Wed Nov 2011

Superior Testers Enterprises LLC

Ref. No: 18659

Printed: 2011.11.23 @ 08:05:30