



DRILL STEM TEST REPORT

Prepared For: **Captiva II L.L.C**

445 Union Blvd Suite 208 Lakewood CO 80228

ATTN: Bruce Ard

7-22s-16w Pawnee

Eakin #6-7

Start Date: 2011.11.23 @ 19:10:00

End Date: 2011.11.24 @ 02:05:30

Job Ticket #: 18660 DST #: 2

Superior Testers Enterprises LLC
PO Box 138 Great Bend KS 67530
1-800-792-6902

Printed: 2011.11.24 @ 02:28:21



DRILL STEM TEST REPORT

Captiva II L.L.C

Eakin #6-7

445 Union Blvd Suite 208 Lakewood CO 80228

7-22s-16w Pawnee

Job Ticket: 18660

DST#: 2

ATTN: Bruce Ard

Test Start: 2011.11.23 @ 19:10:00

GENERAL INFORMATION:

Formation: **Arbuckle**

Deviated: No Whipstock: ft (KB)

Time Tool Opened: 21:38:30

Time Test Ended: 02:05:30

Test Type: Conventional Bottom Hole (Initial)

Tester: Jared Scheck

Unit No: 3320-GB-60

Interval: 3824.00 ft (KB) To 3907.00 ft (KB) (TVD)

Reference Elevations: 2017.00 ft (KB)

Total Depth: 3907.00 ft (KB) (TVD)

2006.00 ft (CF)

Hole Diameter: 7.88 inches Hole Condition: Fair

KB to GR/CF: 11.00 ft

Serial #: 8419

Press @ RunDepth: 104.50 psia @ 3907.00 ft (KB)

Capacity: 5000.00 psia

Start Date: 2011.11.23

End Date:

2011.11.24

Last Calib.:

2011.11.24

Start Time: 19:10:00

End Time:

02:05:30

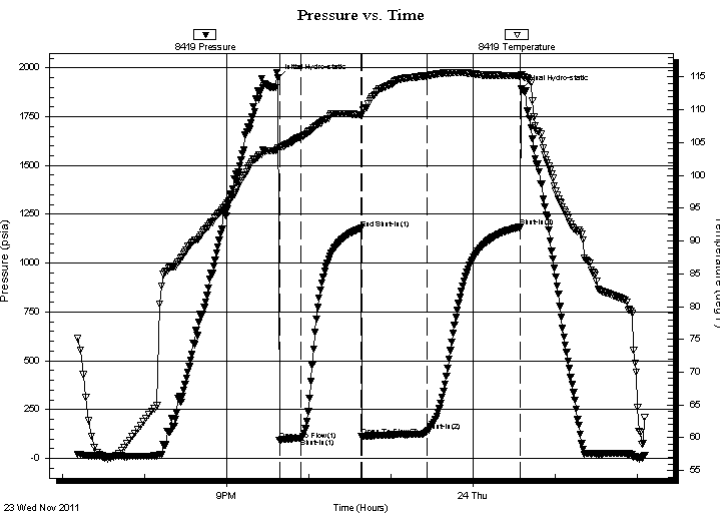
Time On Btm:

2011.11.23 @ 21:37:30

Time Off Btm:

2011.11.24 @ 00:35:30

TEST COMMENT: 1st Opening 15 Minutes-Weak building blow built 2 1/2 inches into water in 15 minutes
 1st Shut-in 45 Minutes-No blow back
 2nd Opening 45 Minutes-Weak building blow built 3 inches into water in 45 minutes
 2nd Shut-in 60 Minutes-No blow back



PRESSURE SUMMARY

Time (Min.)	Pressure (psia)	Temp (deg F)	Annotation
0	1947.10	104.27	Initial Hydro-static
1	93.83	104.27	Open To Flow (1)
17	104.50	105.85	Shut-In(1)
61	1177.94	109.30	End Shut-In(1)
61	111.00	109.31	Open To Flow (2)
109	138.54	115.19	Shut-In(2)
177	1183.70	115.17	Shut-In(3)
178	1890.69	115.35	Final Hydro-static

Recovery

Length (ft)	Description	Volume (bbl)
70.00	muddy oil 15%oil 85%mud	0.34

Gas Rates

	Choke (inches)	Pressure (psia)	Gas Rate (Mcf/d)



DRILL STEM TEST REPORT

Captiva II L.L.C

Eakin #6-7

445 Union Blvd Suite 208 Lakewood CO 80228

7-22s-16w Pawnee

Job Ticket: 18660

DST#: 2

ATTN: Bruce Ard

Test Start: 2011.11.23 @ 19:10:00

GENERAL INFORMATION:

Formation: **Arbuckle**

Deviated: No Whipstock: ft (KB)

Time Tool Opened: 21:38:30

Time Test Ended: 02:05:30

Test Type: Conventional Bottom Hole (Initial)

Tester: Jared Scheck

Unit No: 3320-GB-60

Interval: 3824.00 ft (KB) To 3907.00 ft (KB) (TVD)

Reference Elevations: 2017.00 ft (KB)

Total Depth: 3907.00 ft (KB) (TVD)

2006.00 ft (CF)

Hole Diameter: 7.88 inches Hole Condition: Fair

KB to GR/CF: 11.00 ft

Serial #: 8524

Press @ RunDepth: 1180.98 psia @ ft (KB)

Capacity: 5000.00 psia

Start Date: 2011.11.23

End Date:

2011.11.24

Last Calib.:

2011.11.24

Start Time: 19:10:00

End Time:

02:05:00

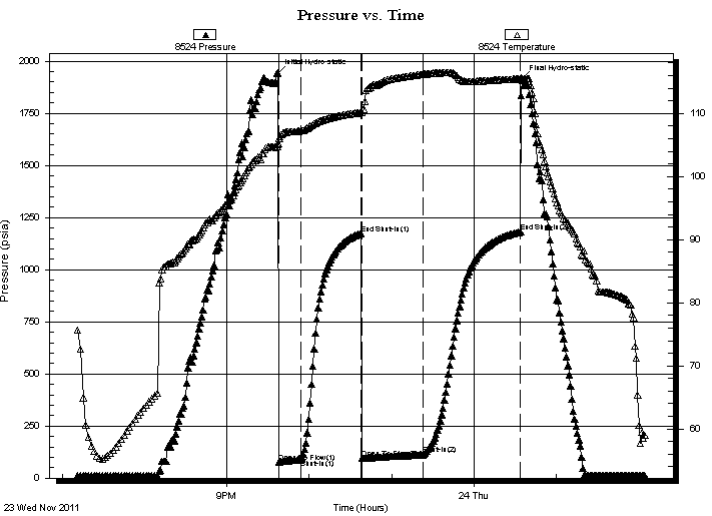
Time On Btm:

2011.11.23 @ 21:37:00

Time Off Btm:

2011.11.24 @ 00:35:00

TEST COMMENT: 1st Opening 15 Minutes-Weak building blow built 2 1/2 inches into water in 15 minutes
 1st Shut-in 45 Minutes-No blow back
 2nd Opening 45 Minutes-Weak building blow built 3 inches into water in 45 minutes
 2nd Shut-in 60 Minutes-No blow back



PRESSURE SUMMARY

Time (Min.)	Pressure (psia)	Temp (deg F)	Annotation
0	1942.33	105.02	Initial Hydro-static
1	77.00	106.02	Open To Flow (1)
17	90.25	107.24	Shut-In(1)
61	1173.94	110.16	End Shut-In(1)
62	94.90	110.19	Open To Flow (2)
106	112.32	116.22	Shut-In(2)
177	1180.98	115.48	End Shut-In(2)
178	1913.91	115.59	Final Hydro-static

Recovery

Length (ft)	Description	Volume (bbl)
70.00	muddy oil 15%oil 85%mud	0.34

Gas Rates

Choke (inches)	Pressure (psia)	Gas Rate (Mcf/d)



DRILL STEM TEST REPORT

TOOL DIAGRAM

Captiva II L.L.C

Eakin #6-7

445 Union Blvd Suite 208 Lakewood CO 80228

7-22s-16w Pawnee

Job Ticket: 18660

DST#: 2

ATTN: Bruce Ard

Test Start: 2011.11.23 @ 19:10:00

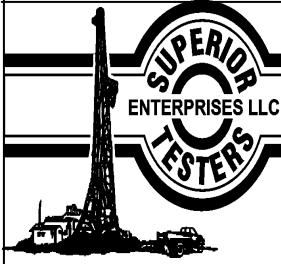
Tool Information

Drill Pipe:	Length: 3607.00 ft	Diameter: 3.80 inches	Volume: 50.60 bbl	Tool Weight:	1000.00 lb
Heavy Wt. Pipe:	Length: 0.00 ft	Diameter: 0.00 inches	Volume: 0.00 bbl	Weight set on Packer:	20000.00 lb
Drill Collar:	Length: 210.00 ft	Diameter: 2.25 inches	Volume: 1.03 bbl	Weight to Pull Loose:	80000.00 lb
			<u>Total Volume: 51.63 bbl</u>	Tool Chased	0.00 ft
Drill Pipe Above KB:	21.00 ft			String Weight: Initial	68000.00 lb
Depth to Top Packer:	3824.00 ft			Final	68000.00 lb
Depth to Bottom Packer:	ft				
Interval between Packers:	83.00 ft				
Tool Length:	111.00 ft				
Number of Packers:	2	Diameter:	6.75 inches		
Tool Comments:					

Tool Description	Length (ft)	Serial No.	Position	Depth (ft)	Accum. Lengths
------------------	-------------	------------	----------	------------	----------------

SHut-InTool	5.00		Inside	3801.00	
Hydraulic Tool	5.00			3806.00	
Jars	6.00			3812.00	
Safety Joint	2.00			3814.00	
Packer	5.00			3819.00	28.00 Bottom Of Top Packer
Packer	5.00			3824.00	
Anchor	0.00			3824.00	
Change Over Sub	0.75			3824.75	
Drill Pipe	64.50		Outside	3889.25	
Change Over Sub	0.75		Outside	3890.00	
Anchor	12.00			3902.00	
Recorder	1.00	8419	Inside	3903.00	
Recorder	1.00	8524	Outside	3904.00	
Bullnose	3.00			3907.00	83.00 Bottom Packers & Anchor

Total Tool Length: 111.00



DRILL STEM TEST REPORT

FLUID SUMMARY

Captiva II L.L.C

Eakin #6-7

445 Union Blvd Suite 208 Lakewood CO 80228

7-22s-16w Pawnee

Job Ticket: 18660

DST#: 2

ATTN: Bruce Ard

Test Start: 2011.11.23 @ 19:10:00

Mud and Cushion Information

Mud Type: Gel Chem

Cushion Type:

Oil API:

deg API

Mud Weight: 9.00 lb/gal

Cushion Length: ft

Water Salinity: ppm

Viscosity: 46.00 sec/qt

Cushion Volume: bbl

Water Loss: 7.20 in³

Gas Cushion Type:

Resistivity: ohm.m

Gas Cushion Pressure: psia

Salinity: 5200.00 ppm

Filter Cake: 1.00 inches

Recovery Information

Recovery Table

Length ft	Description	Volume bbl
70.00	muddy oil 15%oil 85%mud	0.344

Total Length: 70.00 ft Total Volume: 0.344 bbl

Num Fluid Samples: 0

Num Gas Bombs: 0

Serial #:

Laboratory Name:

Laboratory Location:

Recovery Comments:

