

KEVIN L. KESSLER
CONSULTING PETROLEUM GEOLOGIST
(316) 522-7338

OPERATOR : MULL DRILLING COMPANY INC.
LEASE : JOSEPH UNIT WELL # : 1 - 20
LOCATION : 2436' FNL & 1176' FWL
SEC: 20 TWP : 16 S RGE : 22 W
COUNTY : NESS STATE : KANSAS

ELEVATION
KB : 2418
GL : 2413
MEASUREMENTS FROM
KB

CONTRACTOR : WW DRILLING RIG # 10
COMM : 01 / 10 / 2012 COMP : 01 / 17 / 2012
RTD : 4520 LOG TD : 4520
SAMPLES SAVED FROM : 3700 TO : RTD
GEOLOGICAL SUPERVISION FROM : 3600 TO : RTD
MUD UP : 3500 TYPE MUD : CHEMICAL

CASING RECORD
SURFACE :
8 5/8" @ 220
PRODUCTION :
NONE

ELECTRICAL SURVEYS:

FORMATION	TOP	LOG	DATUM	TOP	SAMPLE	DATUM	STRUCT. COMP.
HEEBNER	3819		- 1401	3819		- 1401	+ 01
LANSING	3858		- 1440	3858		- 1440	+ 01
STARK	4081		-1663	4081		-1663	- 03
PAWNEE	4230		- 1812	4230		-1812	- 02
FT. SCOTT	4330		- 1912	4330		- 1912	- 03
CHEROKEE	4346		- 1928	4346		- 1928	- 02
MISSISSIPPI	4472		- 2054	4472		- 2054	- 36

DIL

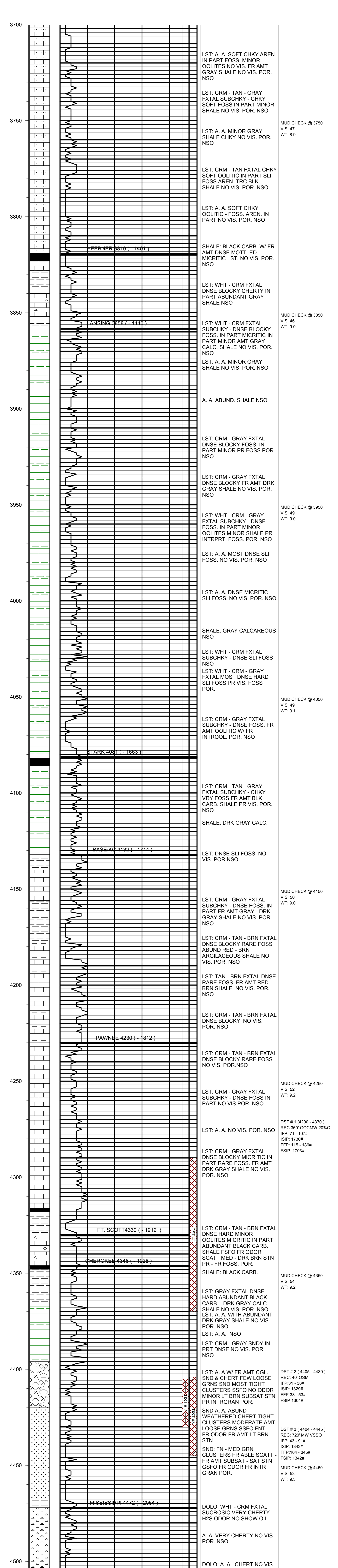
CNL / CDL

MICRO

SONIC

REFERENCE WELL FOR STRUCTURAL COMPARISON :

MULL DRILLING CO. INC. # 1-19 WIERMAN 'A' SEC.19 - T 16 S - R 22 W NESS COUNTY KANSAS



COMMENTS:

DUE TO NEGATIVE DST RESULTS THIS WELL
WAS PLUGGED AS DRY & ABANDONED

KEVIN L. KESSLER