

KEVIN L. KESSLER
CONSULTING PETROLEUM GEOLOGIST
(316) 522-7338

OPERATOR : MULL DRILLING COMPANY INC.
LEASE : STEVE WELL # : 1 - 6
LOCATION : 2126' FNL & 915' FEL
SEC: 06 TWP : 17 S RGE : 23 W
COUNTY : NESS STATE : KANSAS

ELEVATION
KB : 2497
GL : 2492
MEASUREMENTS FROM
KB

CONTRACTOR : WW DRILLING RIG # 10
COMM: 01 / 18 / 2012 COMP : 01 / 26 / 2012
RTD : 4600 LOG TD : 4600
SAMPLES SAVED FROM : 3700 TO: RTD
GEOLOGICAL SUPERVISION FROM : 3600 TO : RTD
MUD UP : 3500 TYPE MUD : CHEMICAL

CASING RECORD
SURFACE :
8 5/8" @ 222
PRODUCTION :
NONE

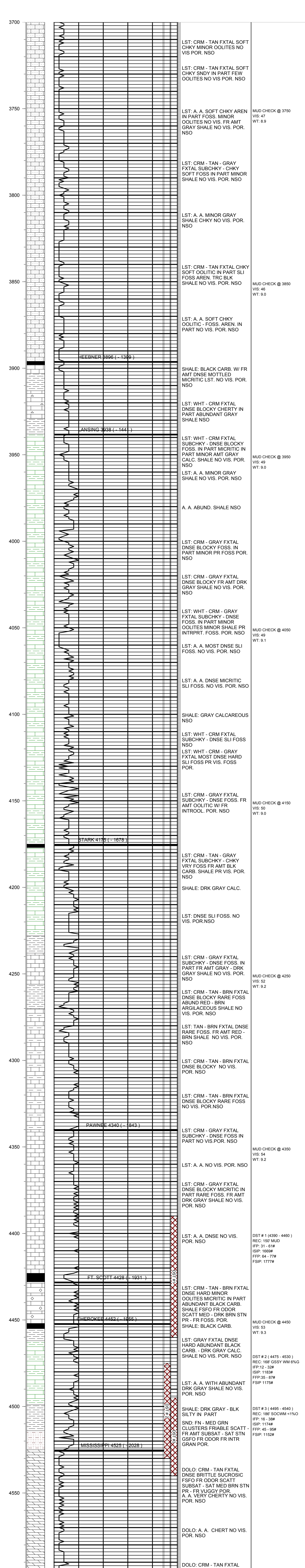
ELECTRICAL SURVEYS:

FORMATION	TOP	LOG	DATUM	TOP	SAMPLE	DATUM	STRUCT. COMP.
HEEBNER	3896		- 1399	3896		- 1399	- 07
LANSING	3938		- 1441	3938		- 1441	- 05
STARK	4175		- 1678	4175		- 1678	- 07
PAWNEE	4340		- 1843	4340		- 1843	- 05
FT. SCOTT	4428		- 1931	4428		- 1931	- 05
CHEROKEE	4452		- 1955	4452		- 1955	- 07
MISSISSIPPI	4525		- 2028	4525		-2028	+ 78

DIL
CNL / CDL
MICRO
SONIC

REFERENCE WELL FOR STRUCTURAL COMPARISON :

MULL # 1- 5 HARKNESS TRUST SEC.05 - T 17 S - R 23 W NESS COUNTY KANSAS



COMMENTS:

**DUE TO NEGATIVE DST RESULTS THIS WELL
WAS PLUGGED AS DRY & ABANDONED**

KEVIN L. KESSLER