

API # 15-163-24013-00-00

GEOLOGICAL REPORT
DRILLING TIME AND SAMPLE LOG

COMPANY Baird Oil Company, LLC.
 LEASE Gasper # 1-7
 FIELD Valley View North
 LOCATION 2210' FSL + 1225' FWL
 SEC 7 TWSP 7s RGE 19w
 COUNTY Rooks STATE Kansas

ELEVATION
 KB 2065
 DF 2063
 GL 2060
 Depths Measured From
 Log KB Drilling KB

CONTRACTOR WWD Drilling Rig # 8
 SPUD 3-8-12 COMP 3-13-12
 SAMPLES SAVED FROM 3000' TO R.T.D.

CASING
 Surface 8 5/8" @ 213'
 Production None

ELECTRIC LOGS
Superior Well Services

FORMATION TOPS AND STRUCTURAL POSITION

FORMATION	SAMPLE	E. LOG	DATUM	A	B	C	D
				●			
Anhydrite	1603	1604	+ 461	+ 463			
Base Anhydrite	1634	1635	+ 430	+ 432			
Topeka	3029	3032	- 967	- 963			
Heebner	3233	3236	- 1171	- 1161			
Toronto	3256	3259	- 1194	- 1184			
Lansing	3272	3275	- 1210	- 1201			
Base Kansas City	3490	3493	- 1428	- 1413			
Marmaton	3517	3520	- 1455	- 1438			
Total Depth	3580	3582	- 1517	- 1535			

REFERENCE WELLS

A Brinkar Enterprises, LLC Gasper/Riffe # 7-1, 2511' FSL + 1900' FWL
B Sec. 7-7s-19w
C
D

REMARKS

This well ran 9 feet lower on the Lansing top than the reference well. After reviewing the open hole log it was decided no further testing was warranted. The well was plugged and abandoned.

Richard B. Bell
3-14-12

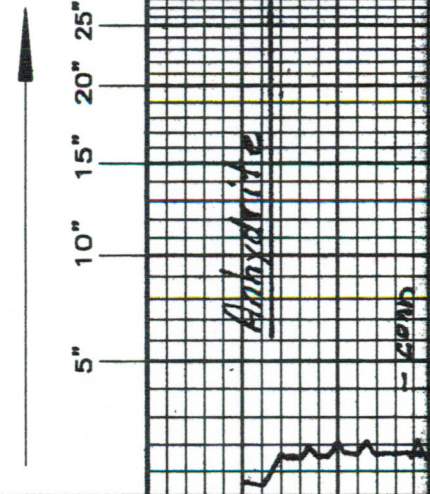
7502

LEGEND

- Anhydrite
- Salt
- Sandstone
- Shale
- Carb sh
- Limestone
- Ool. Lime
- Chert
- Dolomite

DRILLING TIME IN MINUTES
PER FOOT

Rate of Penetration Decreases



DEPTH

1600

20

LITHOLOGY

SAMPLE DESCRIPTIONS

OIL SHOWS

REMARKS

LOG 7710

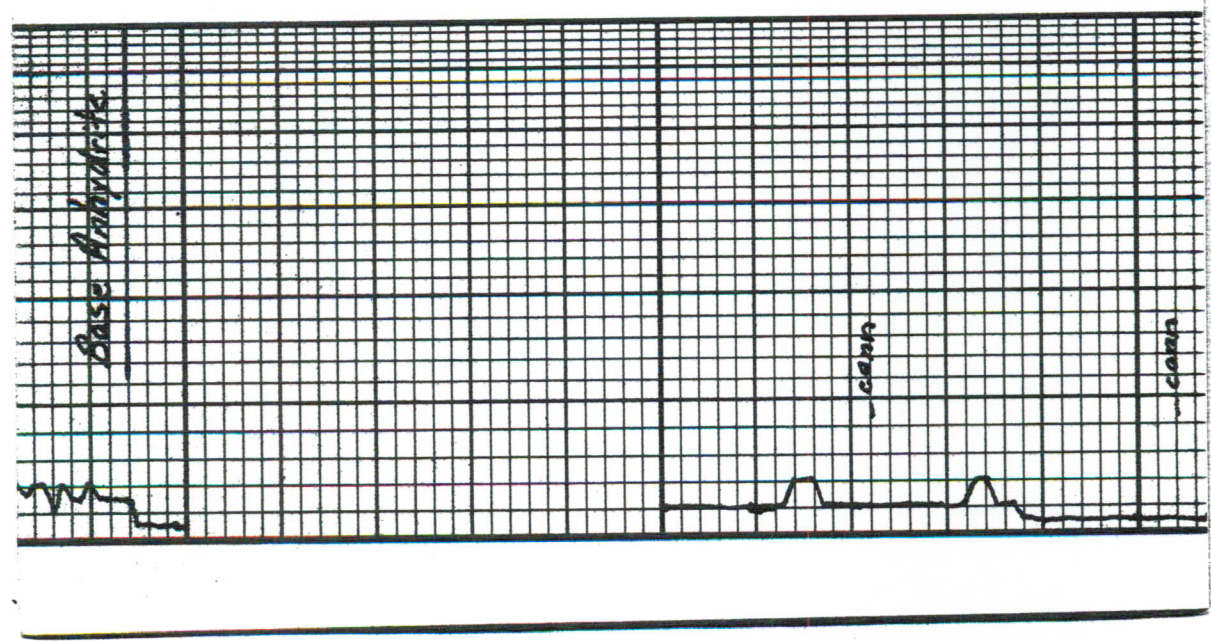


40

2800

20

40



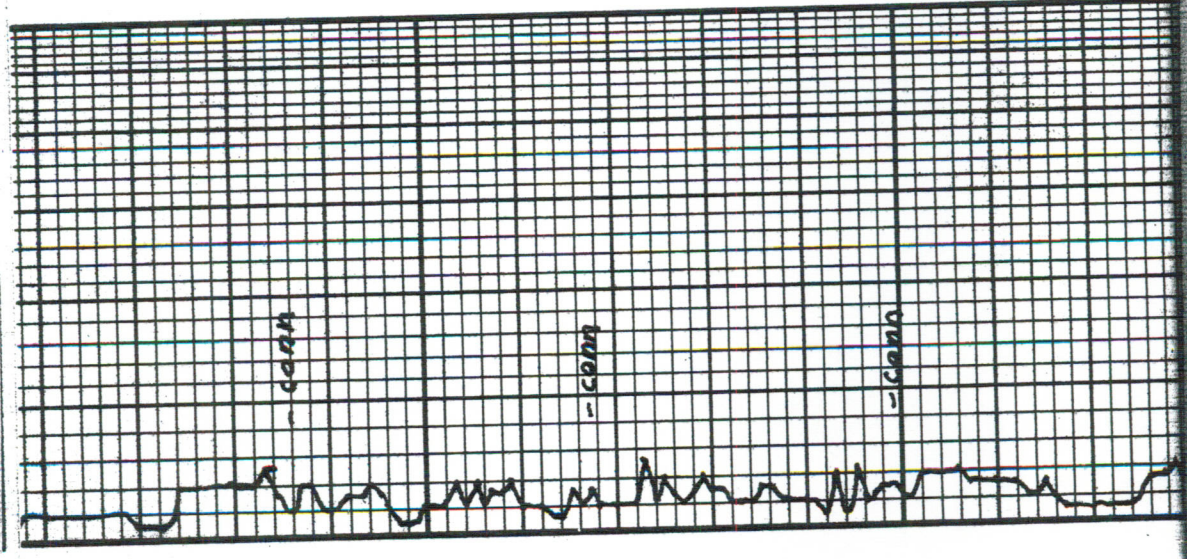
Base Anhydrite

can

can

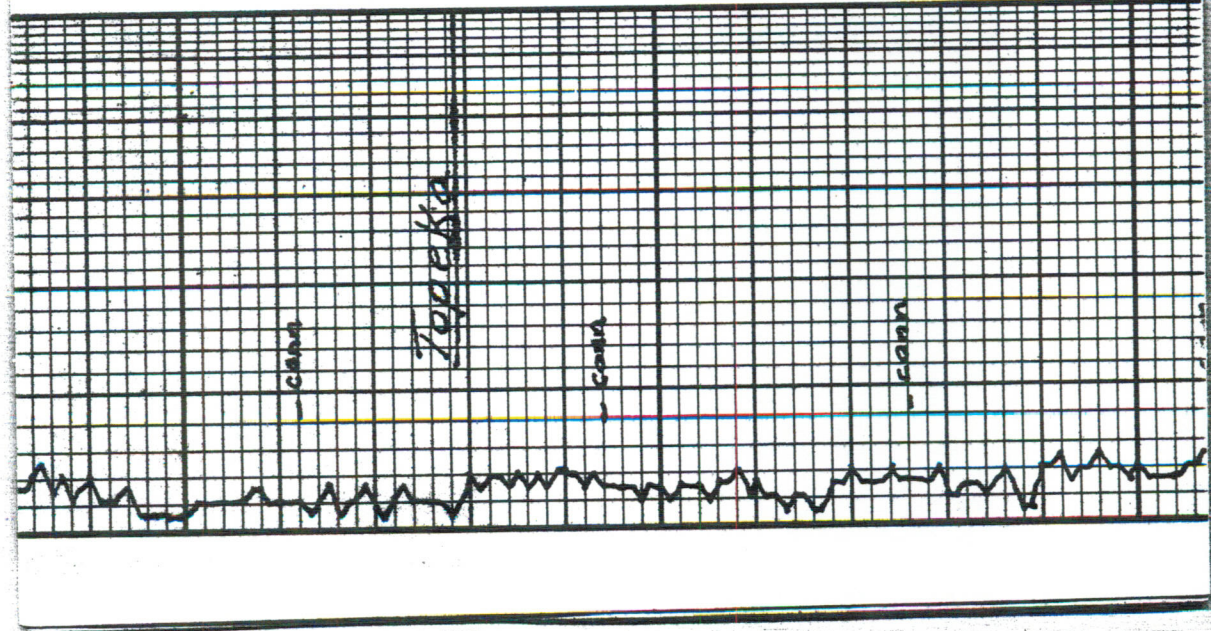


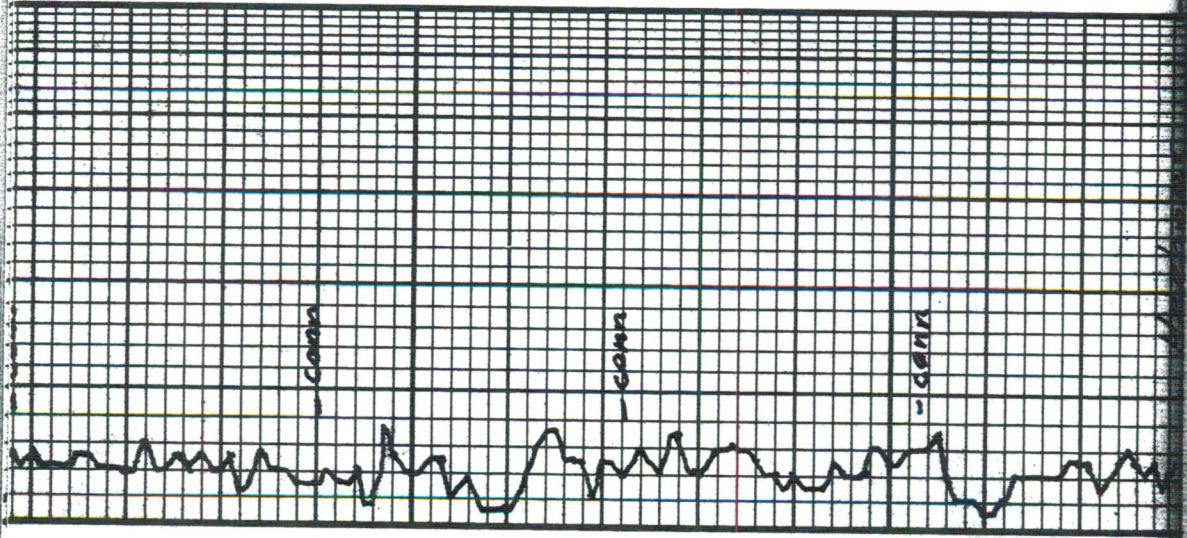
60 80 2900 20 40 60 80



LS: m. gry mtd fslf Trch das. N.S.O.	
sh. lt. gry slty	
LS: gry mtd fslf das N.S.O.	
LS: gry fslf das	
sh. gry	
LS: wh. m. ch. fslf pr. in part of N.S.O.	
LS: wh. mtd fslf das N.S.O.	
sh. gry	
LS: wh. clay - fcln das N.S.O.	
sh. lt. gry	
LS: wh. m. gry ch. fcln - sli. fslf Tr. edge of Tr. blt fcln. No other 2 gry mtd	
LS: m. gry mtd fslf das N.S.O.	
sh. lt. gry	
LS: wh. m. gry ch. fcln fslf das N.S.O.	
LS: wh. m. gry ch. fcln - fslf Tr. blt. pp of N.S.O.	

3000
20
40
60
80
3100

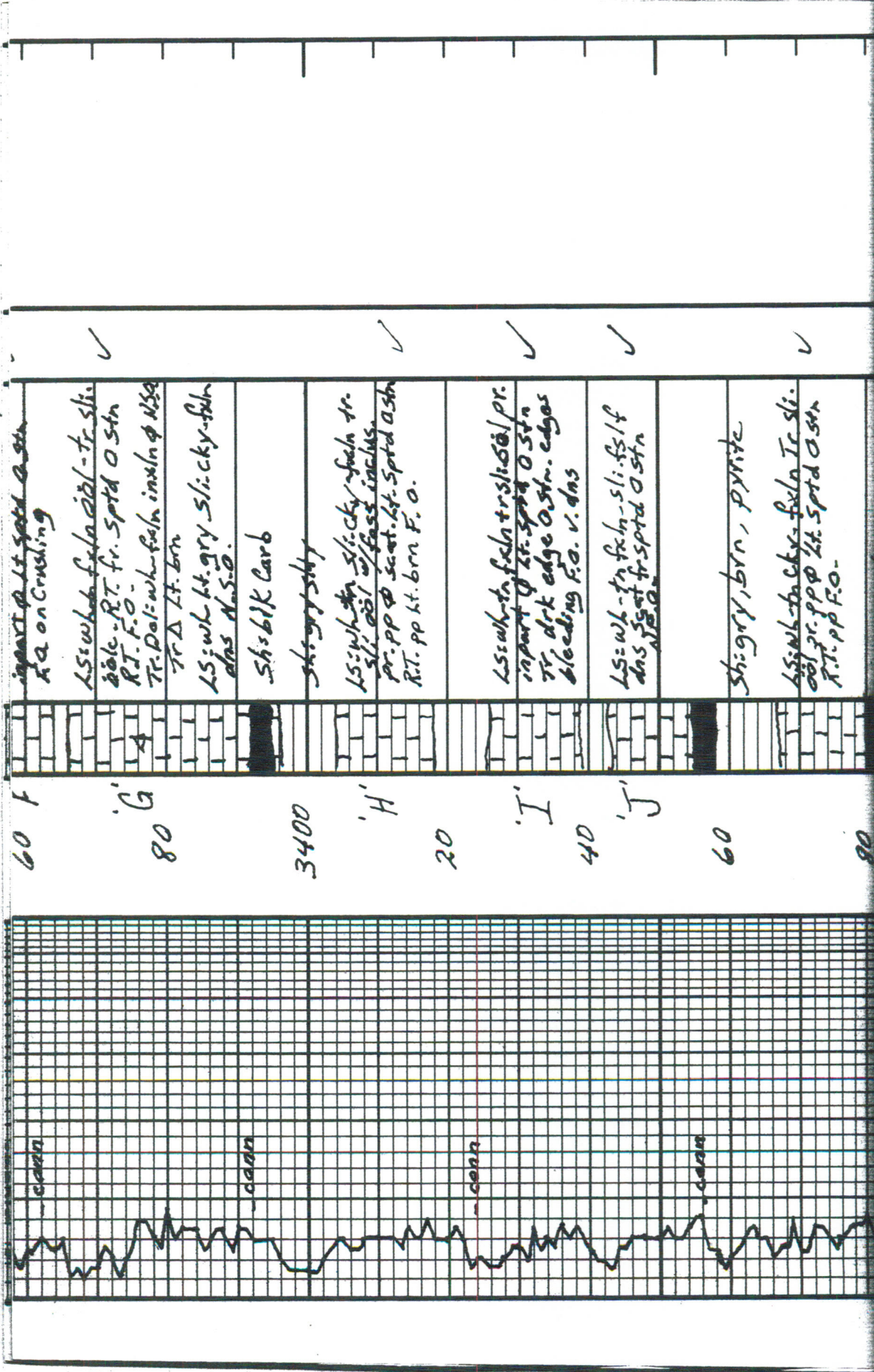




20	aa inc. cky	aa	aa inc. cky
40	Sh. blk carb	aa	Sh. blk carb
60	Stkstone: grey, brn	aa	Stkstone: grey, brn
80	Sh. brn slty	aa	Sh. brn slty
3200	LS: wht tr. cky - fuln - Suc in xln & sl. pyrite spks N.S.O.	aa	LS: wht tr. cky - fuln - Suc in xln & sl. pyrite spks N.S.O.
20	LS: wht tr. cky - fuln dms	aa	LS: wht tr. cky - fuln dms
	Tr: blk carb. sh.	aa	Tr: blk carb. sh.
	LS: wht tr. cky - fuln dms N.S.O.	aa	LS: wht tr. cky - fuln dms N.S.O.
	LS: wht tr. cky - fuln sl. ool pp & blk thick & sta	aa	LS: wht tr. cky - fuln sl. ool pp & blk thick & sta
	blk Tary @ str Δ wh. to gry	aa	blk Tary @ str Δ wh. to gry
	LS: wht tr. cky - fuln dms	aa	LS: wht tr. cky - fuln dms
	LS: tn. gry mild fsth pp & - in part of fr o set. pp thick f.o. on crushing str. odor	aa	LS: tn. gry mild fsth pp & - in part of fr o set. pp thick f.o. on crushing str. odor
	LS: wht tr. cky - fuln dms str & odor from above	aa	LS: wht tr. cky - fuln dms str & odor from above
	LS: qa.	aa	LS: qa.

Strap 3268.46
 Board 3267.89
 Diff. .57
 Tribolite Tasting

DST# / 3231 - 3265
 45-45-45



60 F
 in part of lt. sp. ash
 Ka on crushing

LS: wh. f. ls. sh. - fr. sli.
 pale. R.T. fr. Sp. ash
 R.T. F.O.
 Tr. Dal: wh. f. sh. in ls. & N.S.
 Tr. A. Lt. brn

LS: wh. lt. gry. Slicky-fsh
 drs N.S.O.

Sh. blk Carb

sh. gry. sli

LS: wh. sh. Slicky-fsh fr.
 sli. ash w/ f. ash
 pr. pp. scat. Lt. Sp. ash
 R.T. pp. lt. brn F.O.

LS: wh. sh. f. sh. + sli. ash / pr.
 in part of Lt. Sp. ash
 Tr. drk edge O. sh. - edges
 bleeding F.O. v. drs

LS: wh. sh. f. sh. - sli. f. sh. / f
 drs. pp. fr. Sp. ash
 N.S.O.

Sh. gry, brn, Pyrite

LS: wh. sh. ch. - f. sh. Tr. sli.
 ash pr. pp. Lt. Sp. ash
 R.T. pp F.O.

60 F

'G'
 80

3400

'H'
 20

'I'
 40

'J'
 60

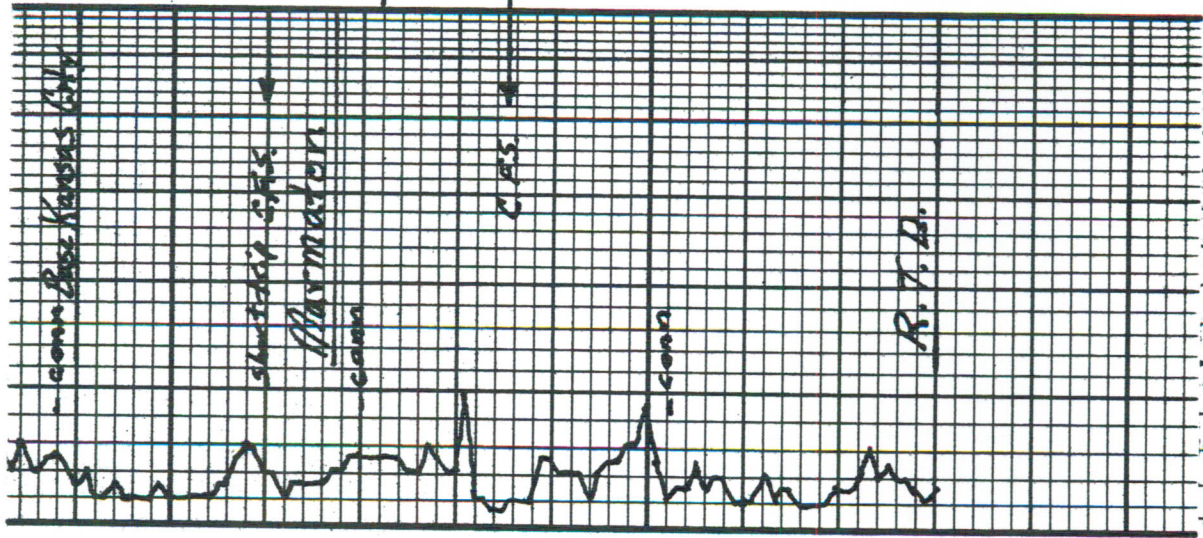
90

cann

cann

cann

cann



3500

20

40

60

80

sh:gy torn L:sc:sh a.a.	sh:gy torn
shly: brn:shx	shly: brn:shx
L:wh:tn f:ln d:ns N.S.O. sh:brn:shx gry	L:wh:tn f:ln d:ns N.S.O. sh:brn:shx gry
L:wh:tn cky f:ln o:el R.T. Dik brn O'str d:wh:tn	L:wh:tn cky f:ln o:el R.T. Dik brn O'str d:wh:tn
L:sh f:sh v:gy ϕ in part ϕ dik O'sat bleeding f:O.	L:sh f:sh v:gy ϕ in part ϕ dik O'sat bleeding f:O.
v. shly: brn, grn	v. shly: brn, grn
shly: gry, brn, grn	shly: gry, brn, grn
sh:gy, brn, grn T:dgry	sh:gy, brn, grn T:dgry

DST: #4 3522-3535
30-30-10-0
IF: 3/4" decr. to 1/2"
FF: No blow
Recovery: 5' OCM
10% O, 90% M
Hrd: 1798-1725#
FP: 14-17/19#
BHP: 250#
BHTemp: 101°F