

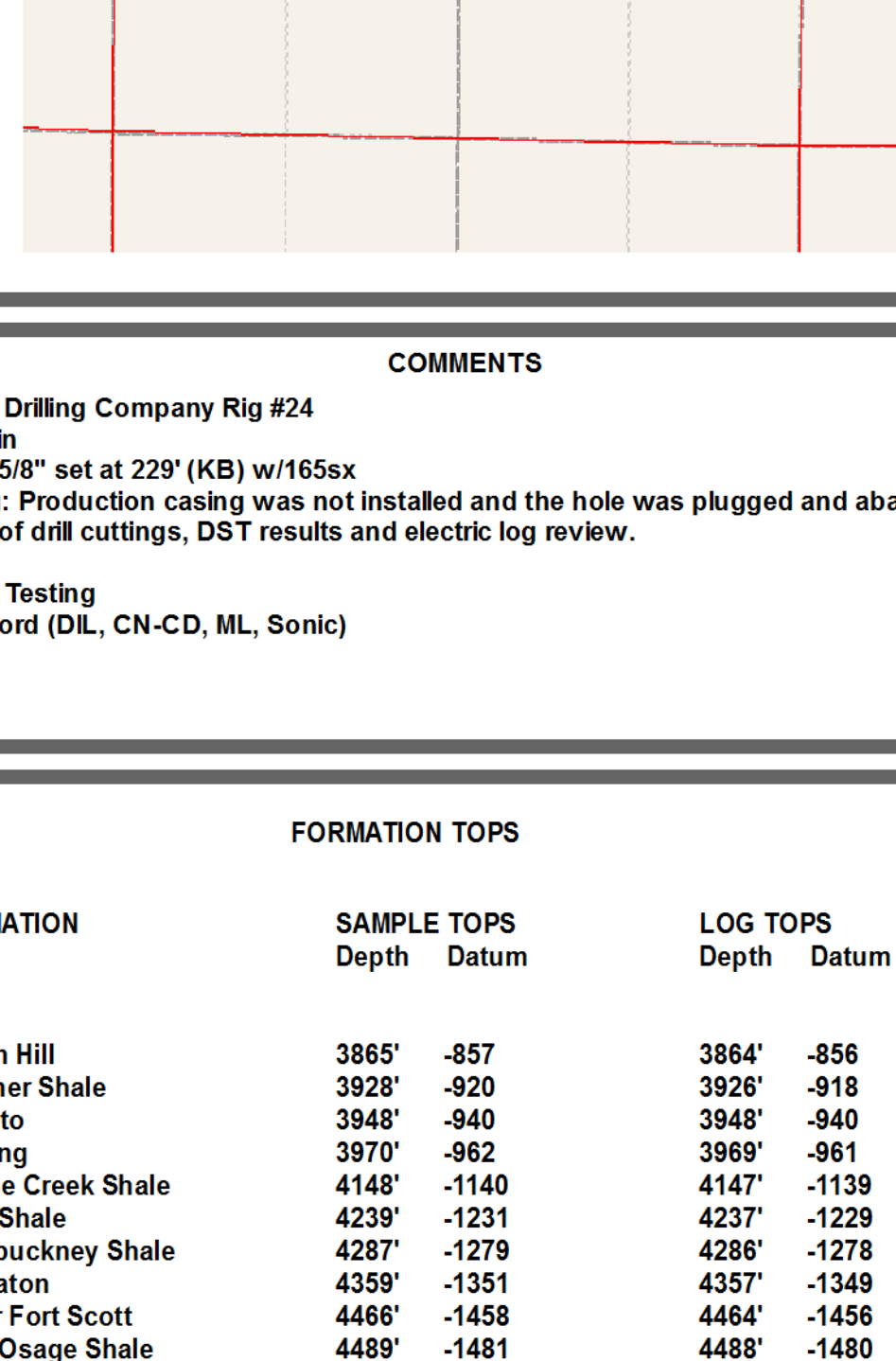
Scale 1:240 (5"=100') Imperial Measured Depth Log

Well Name: Griffith #1-23 Location: 1268' FSL, 2129' FEL, 23-16S-33W, Scott County, Kansas License Number: API: 15-171-20870 03/27/2012 Spud Date: 03/27/2012 Surface Coordinates: Lat: 38.6449792 Long: -100.9330389 Vertical Hole Coordinates: 3003' Ground Elevation (ft): 3600' To: RTD K.E. Elevation (ft): 3008' Logged Interval (ft): 3600' Total Depth (ft): 4790' Formation: Mississippian at RTD Type of Drilling Fluid: Chemical

Printed by MUD.LOG from WellSight Systems 1-800-447-1534 www.WellSight.com

GEOLOGIST

Name: Kent R. Matson Company: Matson Geological Services, LLC Address: 33300 W. 15th Street S Garden Plain, Kansas 67050 316-644-1975

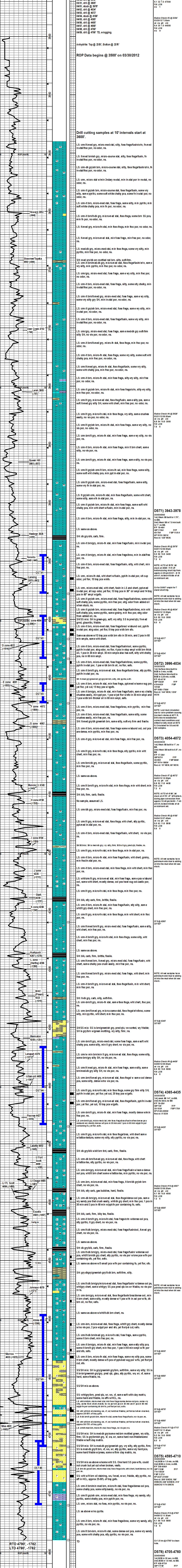


COMMENTS

Contractor: Murfin Drilling Company Rig #24 Pusher: Tony Martin Surface Casing: 8 5/8" set at 229' (KB) w/1655x Production Casing: Production casing was not installed and the hole was plugged and abandoned based on field observations of drill cuttings, DST results and electric log review. Mud by: MudCo DST's by: Triobite Testing Logs by: Weatherford (DIL, CN-CD, ML, Sonic) RTD= 4790' LTD= 4790'

FORMATION TOPS

Table with 4 columns: FORMATION, SAMPLE TOPS (Depth, Datum), LOG TOPS (Depth, Datum). Lists various geological formations and their corresponding depths.



Remarks column containing detailed notes, mud logs, and DST results. Includes entries for DST1 (3943-3978), DST2 (3978-4004), DST3 (4054-4072), DST4 (4365-4435), DST5 (4595-4710), and DST6 (4705-4760).