



DRILL STEM TEST REPORT

Prepared For: **Baird Oil Company, LLC.**

PO Box 428
Logan KS 67646

ATTN: Richard Bell

Esslinger Ranch 1-22

22-3s-22w Norton KS

Start Date: 2012.04.10 @ 04:20:00

End Date: 2012.04.10 @ 08:49:30

Job Ticket #: 46052 DST #: 1

Trilobite Testing, Inc
PO Box 362 Hays, KS 67601
ph: 785-625-4778 fax: 785-625-5620

Printed: 2012.04.18 @ 08:46:35



**TRILOBITE
TESTING, INC.**

DRILL STEM TEST REPORT

Baird Oil Company, LLC.

22-3s-22w Norton KS

PO Box 428
Logan KS 67646

Esslinger Ranch 1-22

ATTN: Richard Bell

Job Ticket: 46052

DST#: 1

Test Start: 2012.04.10 @ 04:20:00

GENERAL INFORMATION:

Formation: **LKC-D**

Deviated: No Whipstock: ft (KB)

Time Tool Opened: 06:18:00

Time Test Ended: 08:49:30

Test Type: Conventional Bottom Hole (Initial)

Tester: Chuck Kreutzer Jr.

Unit No: 61

Interval: 3570.00 ft (KB) To 3587.00 ft (KB) (TVD)

Reference Elevations: 2332.00 ft (KB)

Total Depth: 3587.00 ft (KB) (TVD)

2327.00 ft (CF)

Hole Diameter: 7.88 inches Hole Condition: Good

KB to GR/CF: 5.00 ft

Serial #: 6752

Inside

Press @ Run Depth: 11.99 psig @ 3571.00 ft (KB)

Capacity: 8000.00 psig

Start Date: 2012.04.10

End Date:

2012.04.10

Last Calib.: 2012.04.10

Start Time: 04:20:05

End Time:

08:49:29

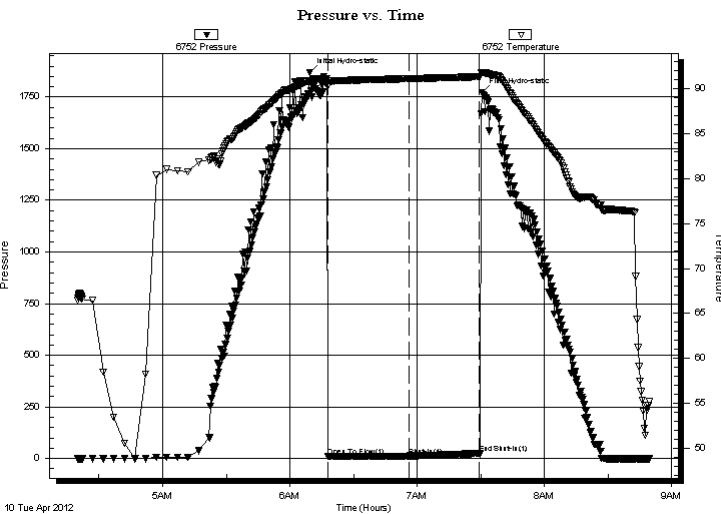
Time On Btm: 2012.04.10 @ 06:09:30

Time Off Btm: 2012.04.10 @ 07:30:30

TEST COMMENT: IF: Weak surface blow, Died in 5 mins.

IS: No blow back over 30 mins.

FF: Pulled tool



PRESSURE SUMMARY

Time (Min.)	Pressure (psig)	Temp (deg F)	Annotation
0	1869.58	90.89	Initial Hydro-static
9	9.10	90.28	Open To Flow (1)
47	11.99	91.11	Shut-In(1)
80	25.25	91.34	End Shut-In(1)
81	1771.13	91.81	Final Hydro-static

Recovery

Length (ft)	Description	Volume (bbl)
5.00	mud-100%	0.02

Gas Rates

Choke (inches)	Pressure (psig)	Gas Rate (Mcf/d)



**TRILOBITE
TESTING, INC.**

DRILL STEM TEST REPORT

TOOL DIAGRAM

Baird Oil Company, LLC.

22-3s-22w Norton KS

PO Box 428
Logan KS 67646

Esslinger Ranch 1-22

Job Ticket: 46052

DST#: 1

ATTN: Richard Bell

Test Start: 2012.04.10 @ 04:20:00

Tool Information

Drill Pipe:	Length: 3430.00 ft	Diameter: 3.80 inches	Volume: 48.11 bbl	Tool Weight: 2000.00 lb
Heavy Wt. Pipe:	Length: 0.00 ft	Diameter: 0.00 inches	Volume: 0.00 bbl	Weight set on Packer: 25000.00 lb
Drill Collar:	Length: 124.00 ft	Diameter: 2.25 inches	Volume: 0.61 bbl	Weight to Pull Loose: 55000.00 lb
			<u>Total Volume: 48.72 bbl</u>	Tool Chased 2.00 ft
Drill Pipe Above KB:	4.00 ft			String Weight: Initial 52000.00 lb
Depth to Top Packer:	3570.00 ft			Final 52000.00 lb
Depth to Bottom Packer:	ft			
Interval between Packers:	17.00 ft			
Tool Length:	37.00 ft			
Number of Packers:	2	Diameter: 6.75 inches		

Tool Comments:

Tool Description	Length (ft)	Serial No.	Position	Depth (ft)	Accum. Lengths
------------------	-------------	------------	----------	------------	----------------

Shut In Tool	5.00			3555.00	
Hydraulic tool	5.00			3560.00	
Packer	5.00			3565.00	20.00 Bottom Of Top Packer
Packer	5.00			3570.00	
Stubb	1.00			3571.00	
Recorder	0.00	6752	Inside	3571.00	
Recorder	0.00	8651	Outside	3571.00	
Perforations	13.00			3584.00	
Bullnose	3.00			3587.00	17.00 Bottom Packers & Anchor
Total Tool Length:	37.00				



**TRILOBITE
TESTING, INC.**

DRILL STEM TEST REPORT

FLUID SUMMARY

Baird Oil Company, LLC.

22-3s-22w Norton KS

PO Box 428
Logan KS 67646

Esslinger Ranch 1-22

Job Ticket: 46052

DST#: 1

ATTN: Richard Bell

Test Start: 2012.04.10 @ 04:20:00

Mud and Cushion Information

Mud Type: Gel Chem

Cushion Type:

Oil API:

deg API

Mud Weight: 9.00 lb/gal

Cushion Length:

ft

Water Salinity:

ppm

Viscosity: 65.00 sec/qt

Cushion Volume:

bbbl

Water Loss: 6.39 in³

Gas Cushion Type:

Resistivity: ohm.m

Gas Cushion Pressure:

psig

Salinity: 1000.00 ppm

Filter Cake: 2.00 inches

Recovery Information

Recovery Table

Length ft	Description	Volume bbl
5.00	mud-100%	0.025

Total Length: 5.00 ft Total Volume: 0.025 bbl

Num Fluid Samples: 0

Num Gas Bombs: 0

Serial #:

Laboratory Name:

Laboratory Location:

Recovery Comments:

Serial #: 6752

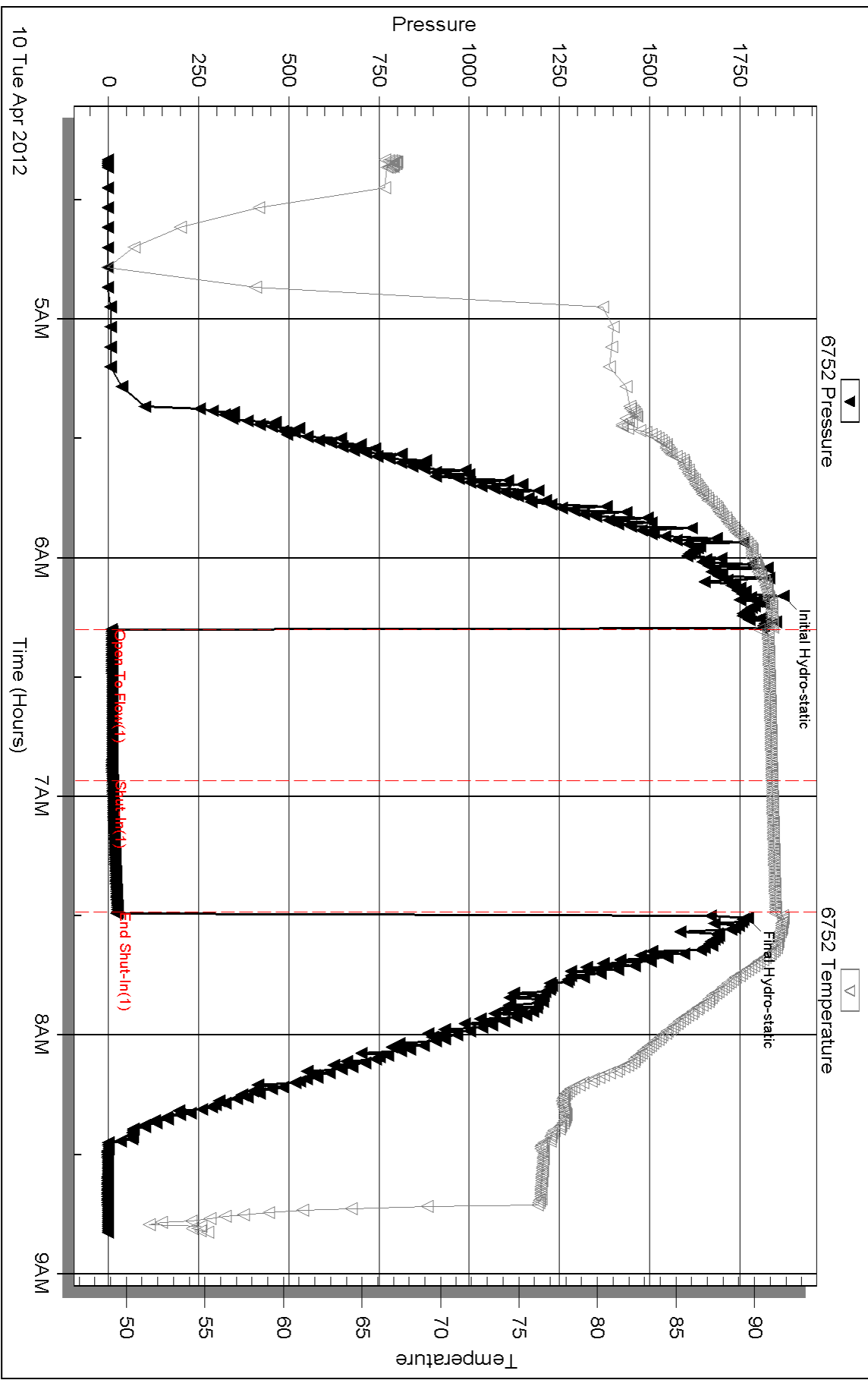
Inside

Baird Oil Company, LLC.

Esslinger Ranch 1-22

DST Test Number: 1

Pressure vs. Time

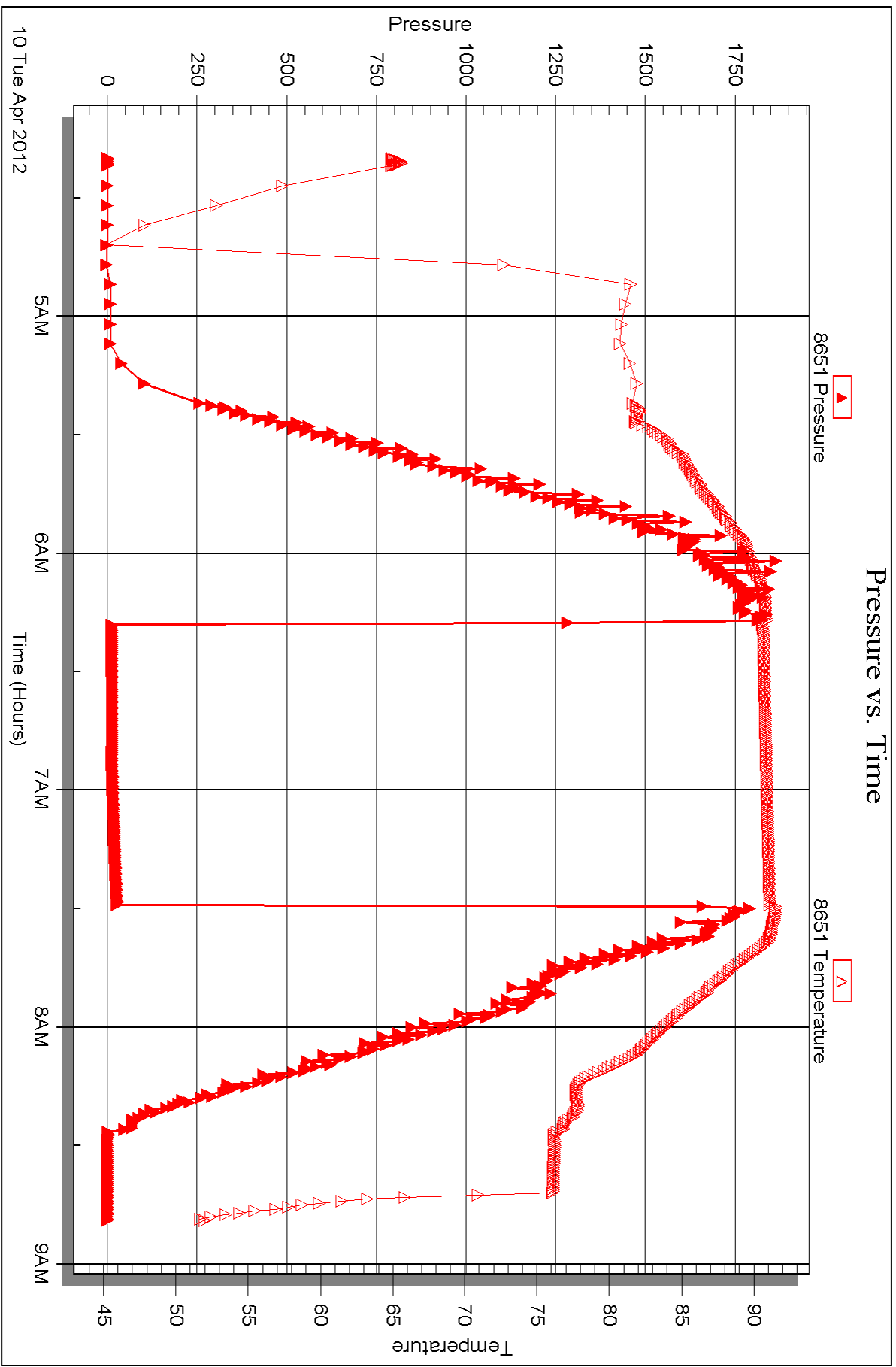


Serial #: 8651

Outside Baird Oil Company, LLC

Esslinger Ranch 1-22

DST Test Number: 1





DRILL STEM TEST REPORT

Prepared For: **Baird Oil Company, LLC.**

PO Box 428
Logan KS 67646

ATTN: Richard Bell

Esslinger Ranch 1-22

22-3s-22w Norton KS

Start Date: 2012.04.10 @ 20:35:00

End Date: 2012.04.11 @ 00:48:30

Job Ticket #: 46053 DST #: 2

Trilobite Testing, Inc
PO Box 362 Hays, KS 67601
ph: 785-625-4778 fax: 785-625-5620

Printed: 2012.04.18 @ 08:45:35



TRILOBITE TESTING, INC.

DRILL STEM TEST REPORT

Baird Oil Company, LLC.

22-3s-22w Norton KS

PO Box 428
Logan KS 67646

Esslinger Ranch 1-22

ATTN: Richard Bell

Job Ticket: 46053

DST#: 2

Test Start: 2012.04.10 @ 20:35:00

GENERAL INFORMATION:

Formation: **LKC-J**

Deviated: No Whipstock: ft (KB)

Time Tool Opened: 22:25:00

Time Test Ended: 00:48:30

Test Type: Conventional Bottom Hole (Reset)

Tester: Chuck Kreutzer Jr.

Unit No: 61

Interval: 3658.00 ft (KB) To 3692.00 ft (KB) (TVD)

Reference Elevations: 2332.00 ft (KB)

Total Depth: 3692.00 ft (KB) (TVD)

2327.00 ft (CF)

Hole Diameter: 7.88 inches Hole Condition: Good

KB to GR/CF: 5.00 ft

Serial #: 6752 Inside

Press @ Run Depth: 12.45 psig @ 3659.00 ft (KB)

Capacity: 8000.00 psig

Start Date: 2012.04.10

End Date:

2012.04.11

Last Calib.: 2012.04.11

Start Time: 20:35:05

End Time:

00:48:30

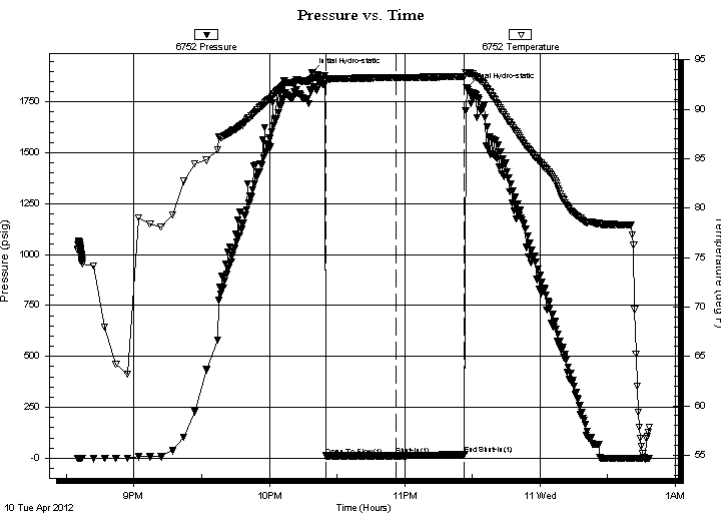
Time On Btm: 2012.04.10 @ 22:19:00

Time Off Btm: 2012.04.10 @ 23:27:30

TEST COMMENT: IF: Weak surface blow, Dead in 3 mins.

IS: No blow back over 30 mins.

FF: Pulled test



PRESSURE SUMMARY

Time (Min.)	Pressure (psig)	Temp (deg F)	Annotation
0	1894.31	93.10	Initial Hydro-static
6	11.59	93.00	Open To Flow (1)
37	12.45	93.20	Shut-In(1)
68	18.21	93.32	End Shut-In(1)
69	1817.28	93.70	Final Hydro-static

Recovery

Length (ft)	Description	Volume (bbl)
5.00	mud-100%	0.02

* Recovery from multiple tests

Gas Rates

Choke (inches)	Pressure (psig)	Gas Rate (Mcf/d)



**TRILOBITE
TESTING, INC.**

DRILL STEM TEST REPORT

TOOL DIAGRAM

Baird Oil Company, LLC.

22-3s-22w Norton KS

PO Box 428
Logan KS 67646

Esslinger Ranch 1-22

Job Ticket: 46053

DST#: 2

ATTN: Richard Bell

Test Start: 2012.04.10 @ 20:35:00

Tool Information

Drill Pipe:	Length: 3524.00 ft	Diameter: 3.80 inches	Volume: 49.43 bbl	Tool Weight: 2000.00 lb
Heavy Wt. Pipe:	Length: 0.00 ft	Diameter: 0.00 inches	Volume: 0.00 bbl	Weight set on Packer: 25000.00 lb
Drill Collar:	Length: 124.00 ft	Diameter: 2.25 inches	Volume: 0.61 bbl	Weight to Pull Loose: 55000.00 lb
			<u>Total Volume: 50.04 bbl</u>	Tool Chased 2.00 ft
Drill Pipe Above KB:	10.00 ft			String Weight: Initial 52000.00 lb
Depth to Top Packer:	3658.00 ft			Final 52000.00 lb
Depth to Bottom Packer:	ft			
Interval between Packers:	34.00 ft			
Tool Length:	54.00 ft			
Number of Packers:	2	Diameter: 6.75 inches		

Tool Comments:

Tool Description	Length (ft)	Serial No.	Position	Depth (ft)	Accum. Lengths
------------------	-------------	------------	----------	------------	----------------

Shut In Tool	5.00			3643.00	
Hydraulic tool	5.00			3648.00	
Packer	5.00			3653.00	20.00 Bottom Of Top Packer
Packer	5.00			3658.00	
Stubb	1.00			3659.00	
Recorder	0.00	6752	Inside	3659.00	
Recorder	0.00	8651	Outside	3659.00	
Perforations	30.00			3689.00	
Bullnose	3.00			3692.00	34.00 Bottom Packers & Anchor
Total Tool Length:	54.00				



**TRILOBITE
TESTING, INC.**

DRILL STEM TEST REPORT

FLUID SUMMARY

Baird Oil Company, LLC.

22-3s-22w Norton KS

PO Box 428
Logan KS 67646

Esslinger Ranch 1-22

Job Ticket: 46053

DST#: 2

ATTN: Richard Bell

Test Start: 2012.04.10 @ 20:35:00

Mud and Cushion Information

Mud Type: Gel Chem

Cushion Type:

Oil API:

deg API

Mud Weight: 9.00 lb/gal

Cushion Length:

ft

Water Salinity:

ppm

Viscosity: 65.00 sec/qt

Cushion Volume:

bbbl

Water Loss: 6.38 in³

Gas Cushion Type:

Resistivity: ohm.m

Gas Cushion Pressure:

psig

Salinity: 1000.00 ppm

Filter Cake: 2.00 inches

Recovery Information

Recovery Table

Length ft	Description	Volume bbl
5.00	mud-100%	0.025

Total Length: 5.00 ft Total Volume: 0.025 bbl

Num Fluid Samples: 0

Num Gas Bombs: 0

Serial #:

Laboratory Name:

Laboratory Location:

Recovery Comments:

Serial #: 6752

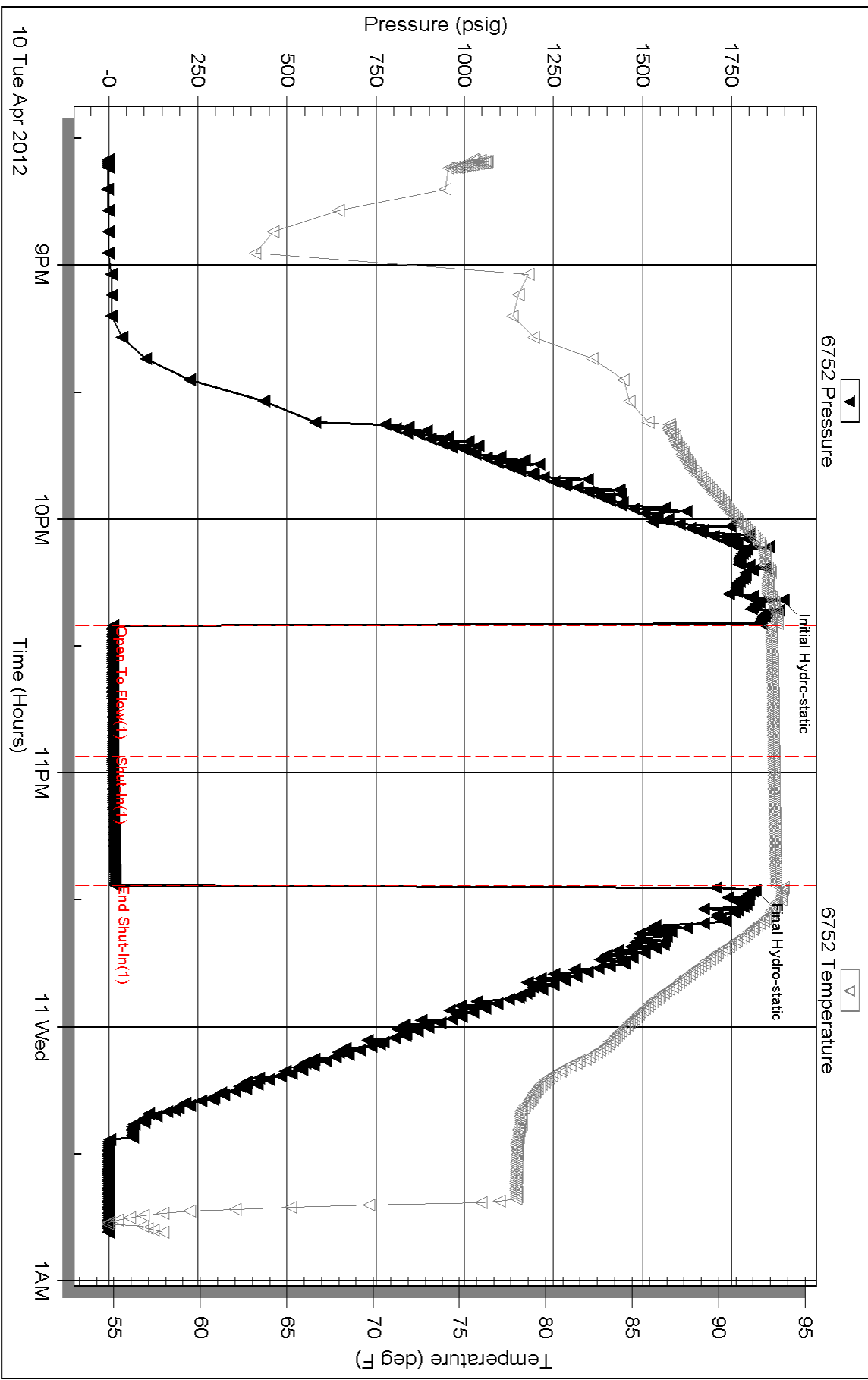
Inside

Baird Oil Company, LLC.

Esslinger Ranch 1-22

DST Test Number: 2

Pressure vs. Time



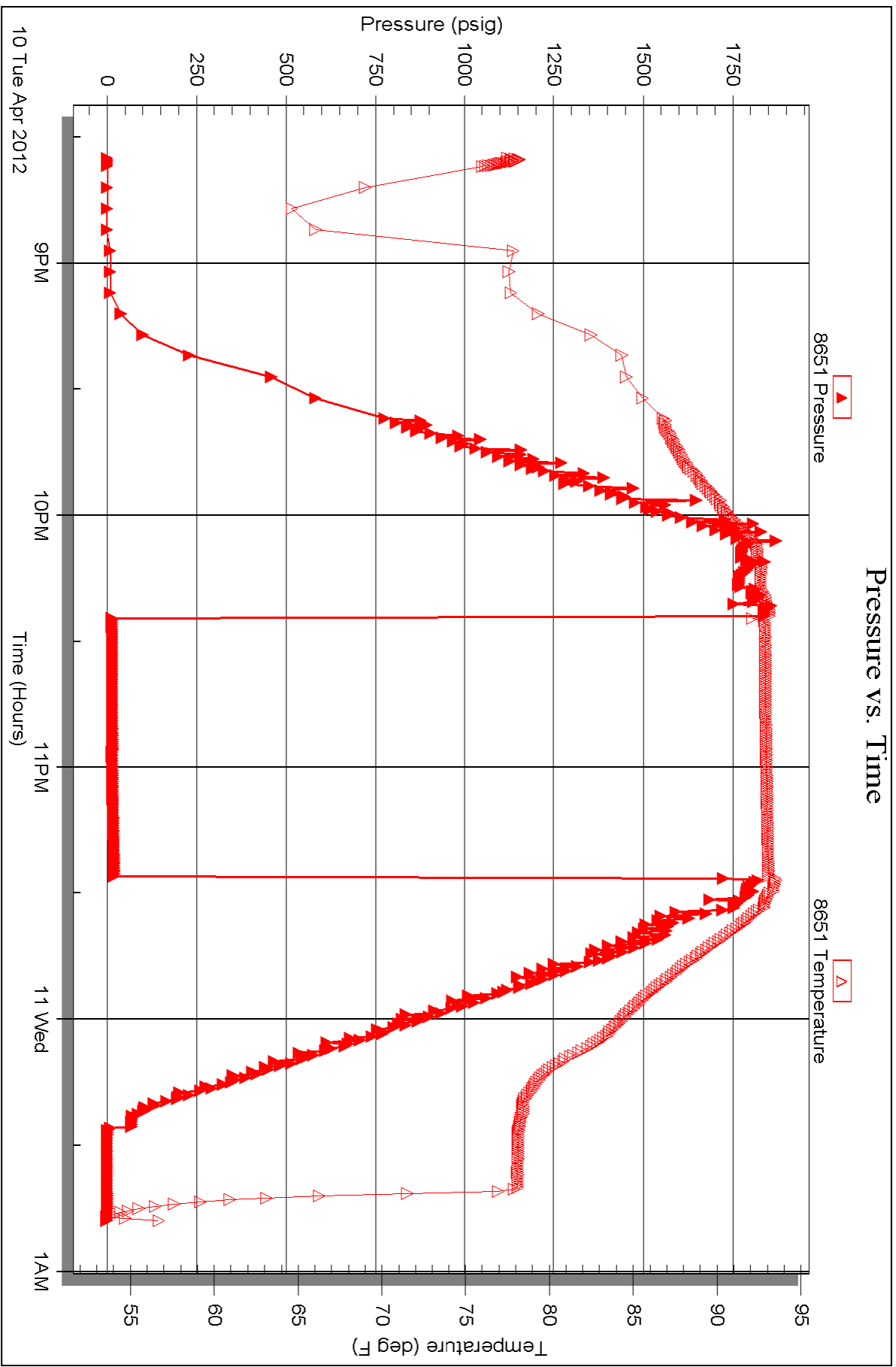
Serial #: 8651

Outside

Baird Oil Company, LLC

Esslinger Ranch 1-22

DST Test Number: 2





TRILOBITE TESTING INC.

P.O. Box 1733 • Hays, Kansas 67601

RECEIVED
APR 12 2012

Test Ticket

NO. 46052

Well Name & No. Eslinger Ranch, Enc #1-22 Test No. 1 Date 4-10-2012
 Company Barnd Oil Company, LLC. Elevation 2332 KB 2327 GL
 Address 113 W Main P.O. Box 428 Logan KS 67646
 Co. Rep / Geo. Richard Bell Rig WW#8
 Location: Sec. 22 Twp. 3S Rge. 22W Co. Norton State Ks

Interval Tested 3570 3587 Zone Tested LKC-0
 Anchor Length 17 Drill Pipe Run 3430 Mud Wt. 9.0
 Top Packer Depth 3565 Drill Collars Run 124 Vis 65
 Bottom Packer Depth 3570 Wt. Pipe Run 0 WL 6.4
 Total Depth 3587 Chlorides 1,000 ppm System LCM 1#

Blow Description IFI weak blow, Died in 5 mins.
ISI: No blow back over 30 mins
~~FFI~~ FFI: Pulled tool
FFI: No Final Shot in.

Rec	Feet of	%gas	%oil	%water	%mud
<u>5</u>	<u>Mud</u>				<u>100</u>
Rec	Feet of	%gas	%oil	%water	%mud
Rec	Feet of	%gas	%oil	%water	%mud
Rec	Feet of	%gas	%oil	%water	%mud
Rec	Feet of	%gas	%oil	%water	%mud

Rec Total 5 BHT _____ Gravity _____ API RW _____ @ _____ °F Chlorides _____ ppm

(A) Initial Hydrostatic 1870 Test 1125 T-On Location 00:25
 (B) First Initial Flow 9 Jars _____ T-Started 4:20
 (C) First Final Flow 12 Safety Joint _____ T-Open 6:18
 (D) Initial Shut-In 25 Circ Sub _____ T-Pulled 7:15
 (E) Second Initial Flow _____ Hourly Standby _____ T-Out 8:49
 (F) Second Final Flow _____ Mileage 492.2 = 86 x 1.40 120.40 Comments Had to go back in, 28
 (G) Final Shut-In _____ Sampler _____ stands out Pulled right.
 (H) Final Hydrostatic 1771 Straddle _____ ON LK. 12:35 AM started back to Bottom
 Shale Packer _____ at 11:00 AM started out at 9:00 AM
 Ruined Shale Packer _____ at 4:30
 Ruined Packer _____
 Extra Copies _____
 Initial Open 30 Extra Packer _____
 Initial Shut-In 30 Extra Recorder _____
 Final Flow 0 Day Standby _____
 Final Shut-In 0 Accessibility _____
 Sub Total 1245.40 MP/DST Disc't _____

Approved By _____ Our Representative Chuck Hayes
 Trilobite Testing Inc. shall not be liable for damaged of any kind of the property or personnel of the one for whom a test is made, or for any loss suffered or sustained directly or indirectly, through the use of its equipment, or its statements or opinion concerning the results of any test, tools lost or damaged in the hole shall be paid for at cost by the party for whom the test is made.

TRILITE TESTING INC.

P.O. Box 1733 • Hays, Kansas 67601

RECEIVED
APR 12 2012

Test Ticket

NO. **46053**

Well Name & No. Esslinger Ranch, Inc. #1-22 Test No. 2 Date 4-11-2012
 Company Baird oil company, LLC Elevation 2332 KB 2327 GL
 Address 113 W. main P.O. Box 428 Logan KS. 67646
 Co. Rep / Geo. Richard Bell Rig WV-48
 Location: Sec. 22 Twp. 35 Rge. 22w Co. Norton State Ks.

Interval Tested 3658 3692 Zone Tested LKC-J
 Anchor Length 34 Drill Pipe Run 3624 Mud Wt. 9.0
 Top Packer Depth 3653 Drill Collars Run 124 Vis 65
 Bottom Packer Depth 3658 Wt. Pipe Run -0- WL 6.4
 Total Depth 3692 Chlorides 1,000 ppm System LCM 1#

Blow Description IF: Weak surface blow, Dead in 3 mins.
ISI: No blow back over 30 mins.
FF: pulled test.

Rec	Feet of	%gas	%oil	%water	%mud
<u>5</u>	<u>mud</u>			<u>100</u>	
Rec	Feet of	%gas	%oil	%water	%mud
Rec	Feet of	%gas	%oil	%water	%mud
Rec	Feet of	%gas	%oil	%water	%mud
Rec	Feet of	%gas	%oil	%water	%mud

Rec Total 5 BHT 93.3 Gravity _____ API RW _____ @ _____ °F Chlorides _____ ppm

(A) Initial Hydrostatic 1894 Test 1125' T-On Location 18:30
 (B) First Initial Flow 12 Jars _____ T-Started 20:35
 (C) First Final Flow 13 Safety Joint _____ T-Open 2:25
 (D) Initial Shut-In 18 Circ Sub _____ T-Pulled 23:20
 (E) Second Initial Flow _____ Hourly Standby _____ T-Out 00:48
 (F) Second Final Flow _____ Mileage 20x2 = 40x1.40 560' X _____ Comments Loaded tools on 4/11/12
 (G) Final Shut-In _____ Sampler _____ at. 63RT 88.20
 (H) Final Hydrostatic 1817 Straddle _____ Ruined Shale Packer _____
 Shale Packer _____ Ruined Packer _____
 Extra Packer _____ Extra Copies _____
 Initial Open 30 Extra Recorder _____ Sub Total 0
 Initial Shut-In 30 Day Standby _____ Total 1269.20
 Final Flow _____ Accessibility _____ MP/DST Disc't _____
 Final Shut-In _____ Sub Total 1269.20

Approved By _____ Our Representative Chuck Kuyper
 Trilobite Testing Inc. shall not be liable for damaged of any kind of the property or personnel of the one for whom a test is made, or for any loss suffered or sustained, directly or indirectly, through the use of its equipment, or its statements or opinion concerning the results of any test, tools lost or damaged in the hole shall be paid for at cost by the party for whom the test is made.