



**TRILOBITE
TESTING, INC.**

DRILL STEM TEST REPORT

Dow ning-Nelson Oil Co Inc

13-12s-23w

Po Box 1019
Hays Ks 67601

KD Unit 1-13

ATTN: Ron Nelson

Job Ticket: 44822

DST#: 1

Test Start: 2012.04.06 @ 19:58:22

GENERAL INFORMATION:

Formation: **Lansing-C&D**

Deviated: No Whipstock: ft (KB)

Time Tool Opened: 22:03:52

Time Test Ended: 02:54:22

Test Type: Conventional Bottom Hole (Initial)

Tester: Jeff Brown

Unit No: 44

Interval: 3730.00 ft (KB) To 3769.00 ft (KB) (TVD)

Reference Elevations: 2433.00 ft (KB)

Total Depth: 3769.00 ft (KB) (TVD)

2425.00 ft (CF)

Hole Diameter: 7.88 inches Hole Condition: Good

KB to GR/CF: 8.00 ft

Serial #: 8321

Inside

Press @RunDepth: 45.32 psig @ 3738.00 ft (KB)

Capacity: 8000.00 psig

Start Date: 2012.04.06

End Date:

2012.04.07

Last Calib.:

2012.04.07

Start Time:

19:58:23

End Time:

02:54:22

Time On Btm:

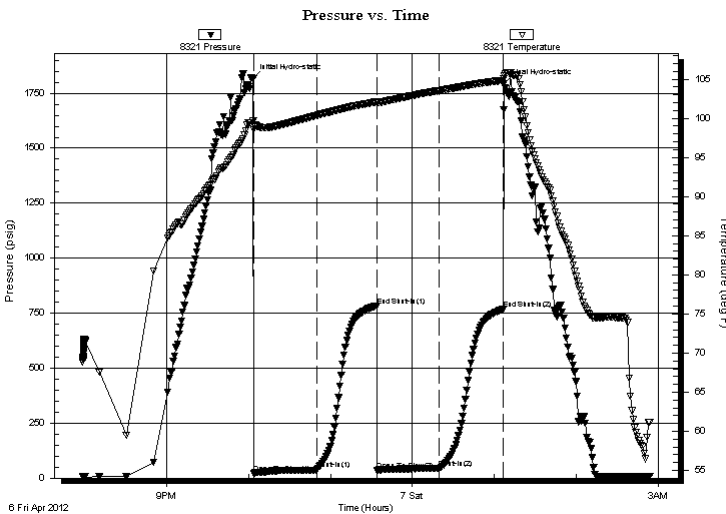
2012.04.06 @ 22:03:22

Time Off Btm:

2012.04.07 @ 01:07:22

TEST COMMENT: IFP-Fair blow built to 5 1/2 in
ISI-Dead no blow back
FFP-Fair blow built to 7 in
FSI-Dead no blow back

PRESSURE SUMMARY



Time (Min.)	Pressure (psig)	Temp (deg F)	Annotation
0	1816.00	99.69	Initial Hydro-static
1	20.58	98.58	Open To Flow (1)
47	39.94	100.37	Shut-In(1)
91	783.83	102.10	End Shut-In(1)
91	33.60	101.97	Open To Flow (2)
137	45.32	103.54	Shut-In(2)
183	767.55	104.85	End Shut-In(2)
184	1792.89	105.48	Final Hydro-static

Recovery

Length (ft)	Description	Volume (bbl)
60.00	HOCGM 10%G 30%O 60%M	0.56

Gas Rates

	Choke (inches)	Pressure (psig)	Gas Rate (Mcf/d)



TRILOBITE TESTING, INC.

DRILL STEM TEST REPORT

Dow ning-Nelson Oil Co Inc

13-12s-23w

Po Box 1019
Hays Ks 67601

KD Unit 1-13

Job Ticket: 44822

DST#: 1

ATTN: Ron Nelson

Test Start: 2012.04.06 @ 19:58:22

GENERAL INFORMATION:

Formation: **Lansing-C&D**

Deviated: No Whipstock: ft (KB)

Time Tool Opened: 22:03:52

Time Test Ended: 02:54:22

Interval: **3730.00 ft (KB) To 3769.00 ft (KB) (TVD)**

Total Depth: 3769.00 ft (KB) (TVD)

Hole Diameter: 7.88 inches Hole Condition: Good

Test Type: Conventional Bottom Hole (Initial)

Tester: Jeff Brown

Unit No: 44

Reference Elevations: 2433.00 ft (KB)

2425.00 ft (CF)

KB to GR/CF: 8.00 ft

Serial #: 8737 Outside

Press @RunDepth: psig @ 3738.00 ft (KB)

Start Date: 2012.04.06

End Date:

2012.04.07

Capacity: 8000.00 psig

Last Calib.:

2012.04.07

Start Time:

19:58:26

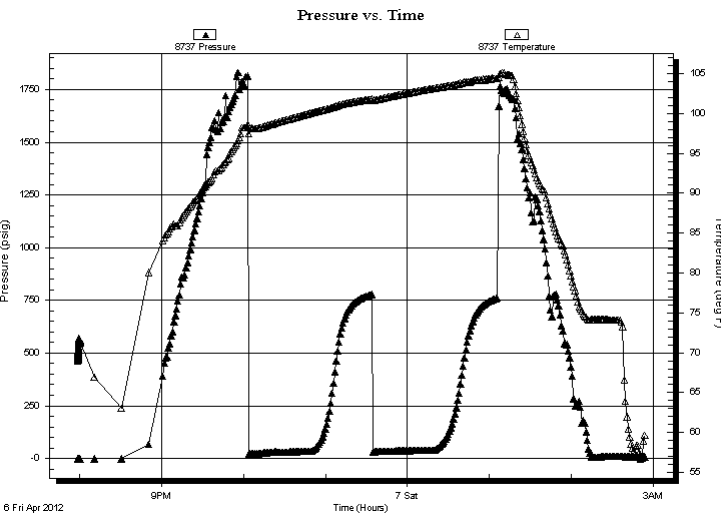
End Time:

02:54:25

Time On Btm:

Time Off Btm:

TEST COMMENT: IFP-Fair blow built to 5 1/2 in
ISI-Dead no blow back
FFP-Fair blow built to 7 in
FSI-Dead no blow back



PRESSURE SUMMARY

Time (Min.)	Pressure (psig)	Temp (deg F)	Annotation

Recovery

Length (ft)	Description	Volume (bbl)
60.00	HOCGM 10%G 30%O 60%M	0.56

Gas Rates

	Choke (inches)	Pressure (psig)	Gas Rate (Mcf/d)



**TRILOBITE
TESTING, INC.**

DRILL STEM TEST REPORT

FLUID SUMMARY

Dow ning-Nelson Oil Co Inc

13-12s-23w

Po Box 1019
Hays Ks 67601

KD Unit 1-13

Job Ticket: 44822

DST#: 1

ATTN: Ron Nelson

Test Start: 2012.04.06 @ 19:58:22

Mud and Cushion Information

Mud Type: Gel Chem

Cushion Type:

Oil API:

deg API

Mud Weight: 9.00 lb/gal

Cushion Length: ft

Water Salinity: ppm

Viscosity: 61.00 sec/qt

Cushion Volume: bbl

Water Loss: 7.99 in³

Gas Cushion Type:

Resistivity: ohm.m

Gas Cushion Pressure: psig

Salinity: 2000.00 ppm

Filter Cake: inches

Recovery Information

Recovery Table

Length ft	Description	Volume bbl
60.00	HOCGM 10%G 30%O 60%M	0.559

Total Length: 60.00 ft Total Volume: 0.559 bbl

Num Fluid Samples: 0

Num Gas Bombs: 0

Serial #:

Laboratory Name:

Laboratory Location:

Recovery Comments:

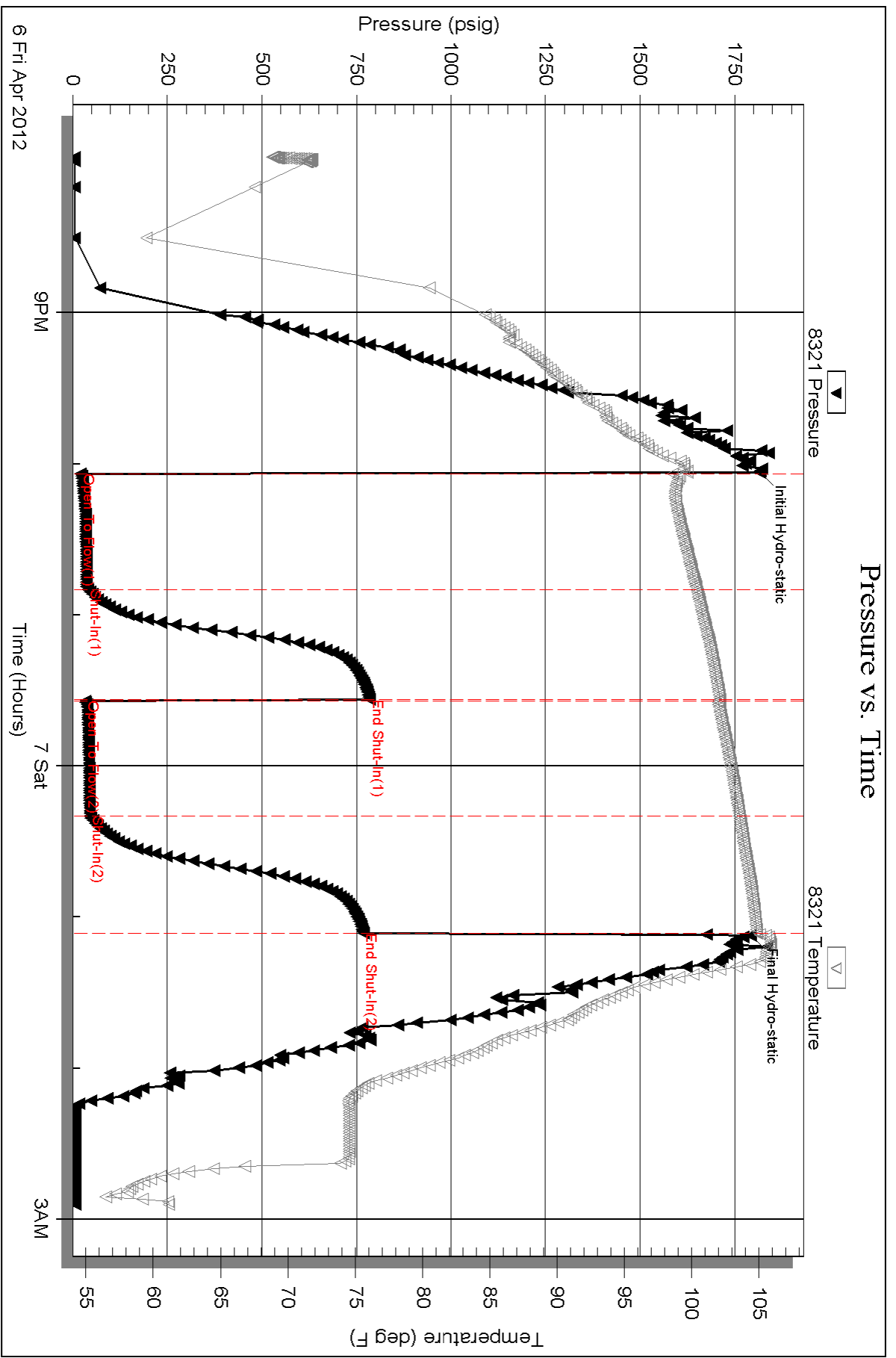
Serial #: 8321

Inside

Dow nting-Nelson Oil Co Inc

KD Unit 1-13

DST Test Number: 1



Serial #: 8737

Outside Dow nging-Nelson Oil Co Inc

KD Unit 1-13

DST Test Number: 1

