

T34S, R7W, 6th P.M.

SGOMI

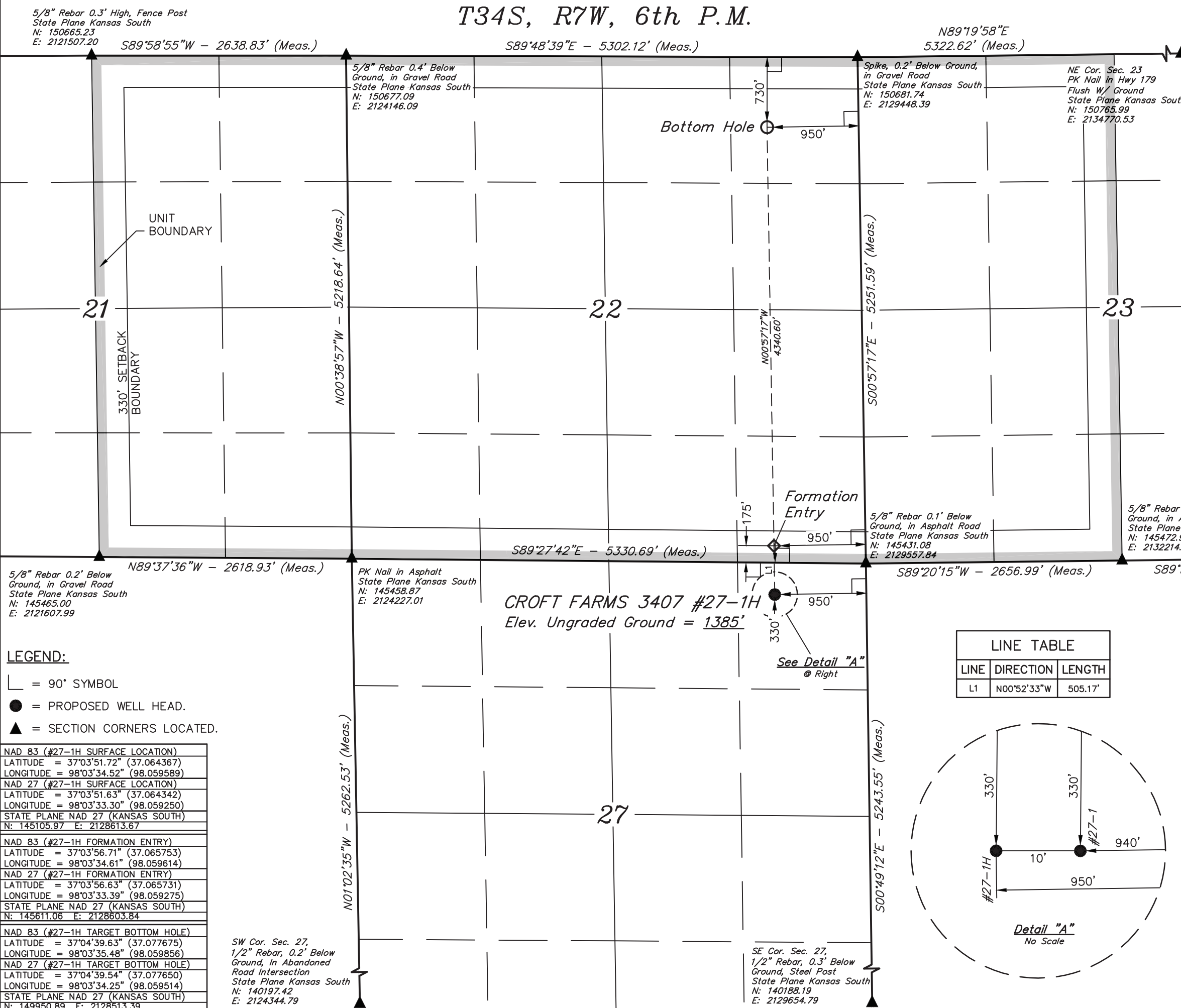
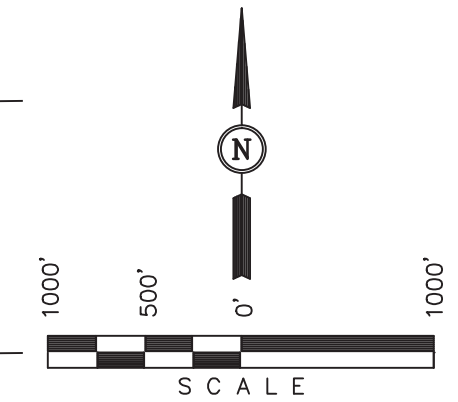
Well location, CROFT FARMS 3407 #27-1H, located as shown in the NE 1/4 NE 1/4 of Section 27, T34S, R7W, 6th P.M., Harper County, Kansas.

BASIS OF ELEVATION

SPOT ELEVATION LOCATED AT THE NORTHEAST CORNER OF SECTION 22, T33S, R7W, 6th P.M. TAKEN FROM THE ANTHONY, QUADRANGLE, KANSAS, HARPER COUNTY, 7.5 MINUTE QUAD (TOPOGRAPHIC MAP) PUBLISHED BY THE UNITED STATES DEPARTMENT OF THE INTERIOR, GEOLOGICAL SURVEY. SAID ELEVATION IS MARKED AS BEING 1348 FEET.

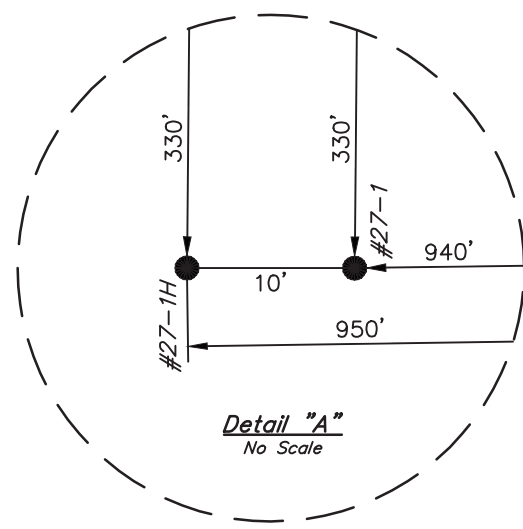
BASIS OF BEARINGS

BASIS OF BEARINGS IS A G.P.S. OBSERVATION.



LINE TABLE

LINE	DIRECTION	LENGTH
L1	N00°52'33"W	505.17'



- LEGEND:
- └─┘ = 90° SYMBOL
 - = PROPOSED WELL HEAD.
 - ▲ = SECTION CORNERS LOCATED.

NAD 83 (#27-1H SURFACE LOCATION)
LATITUDE = 37°03'51.72" (37.064367)
LONGITUDE = 98°03'34.52" (98.059589)
NAD 27 (#27-1H SURFACE LOCATION)
LATITUDE = 37°03'51.63" (37.064342)
LONGITUDE = 98°03'33.30" (98.059250)
STATE PLANE NAD 27 (KANSAS SOUTH)
N: 145105.97 E: 2128613.67
NAD 83 (#27-1H FORMATION ENTRY)
LATITUDE = 37°03'56.71" (37.065753)
LONGITUDE = 98°03'34.61" (98.059614)
NAD 27 (#27-1H FORMATION ENTRY)
LATITUDE = 37°03'56.63" (37.065731)
LONGITUDE = 98°03'33.39" (98.059275)
STATE PLANE NAD 27 (KANSAS SOUTH)
N: 145611.06 E: 2128603.84
NAD 83 (#27-1H TARGET BOTTOM HOLE)
LATITUDE = 37°04'39.63" (37.077675)
LONGITUDE = 98°03'35.48" (98.059856)
NAD 27 (#27-1H TARGET BOTTOM HOLE)
LATITUDE = 37°04'39.54" (37.077650)
LONGITUDE = 98°03'34.25" (98.059514)
STATE PLANE NAD 27 (KANSAS SOUTH)
N: 149950.89 E: 2128513.39

SW Cor. Sec. 27,
1/2" Rebar, 0.2' Below
Ground, In Abandoned
Road Intersection
State Plane Kansas South
N: 140197.42
E: 2124344.79

SE Cor. Sec. 27,
1/2" Rebar, 0.3' Below
Ground, Steel Post
State Plane Kansas South
N: 140188.19
E: 2129654.79

CERTIFICATE

THIS IS TO CERTIFY THAT THE ABOVE PLAT WAS PREPARED FROM FIELD NOTES OF ACTUAL SURVEYS MADE BY ME OR UNDER MY SUPERVISION AND THAT THE SAME ARE TRUE AND CORRECT TO THE BEST OF MY KNOWLEDGE AND BELIEF.

[Signature]
REGISTERED LAND SURVEYOR
REGISTRATION NO. 1360
STATE OF KANSAS

REVISED: 04-12-12

UINTAH ENGINEERING & LAND SURVEYING 85 SOUTH 200 EAST - VERNAL, UTAH 84078 (435) 789-1017		
SCALE 1" = 1000'	DATE SURVEYED: 04-05-12	DATE DRAWN: 04-09-12
PARTY L.S. J.P. C.C.	REFERENCES G.L.O. PLAT	
WEATHER WARM	FILE SGOMI	