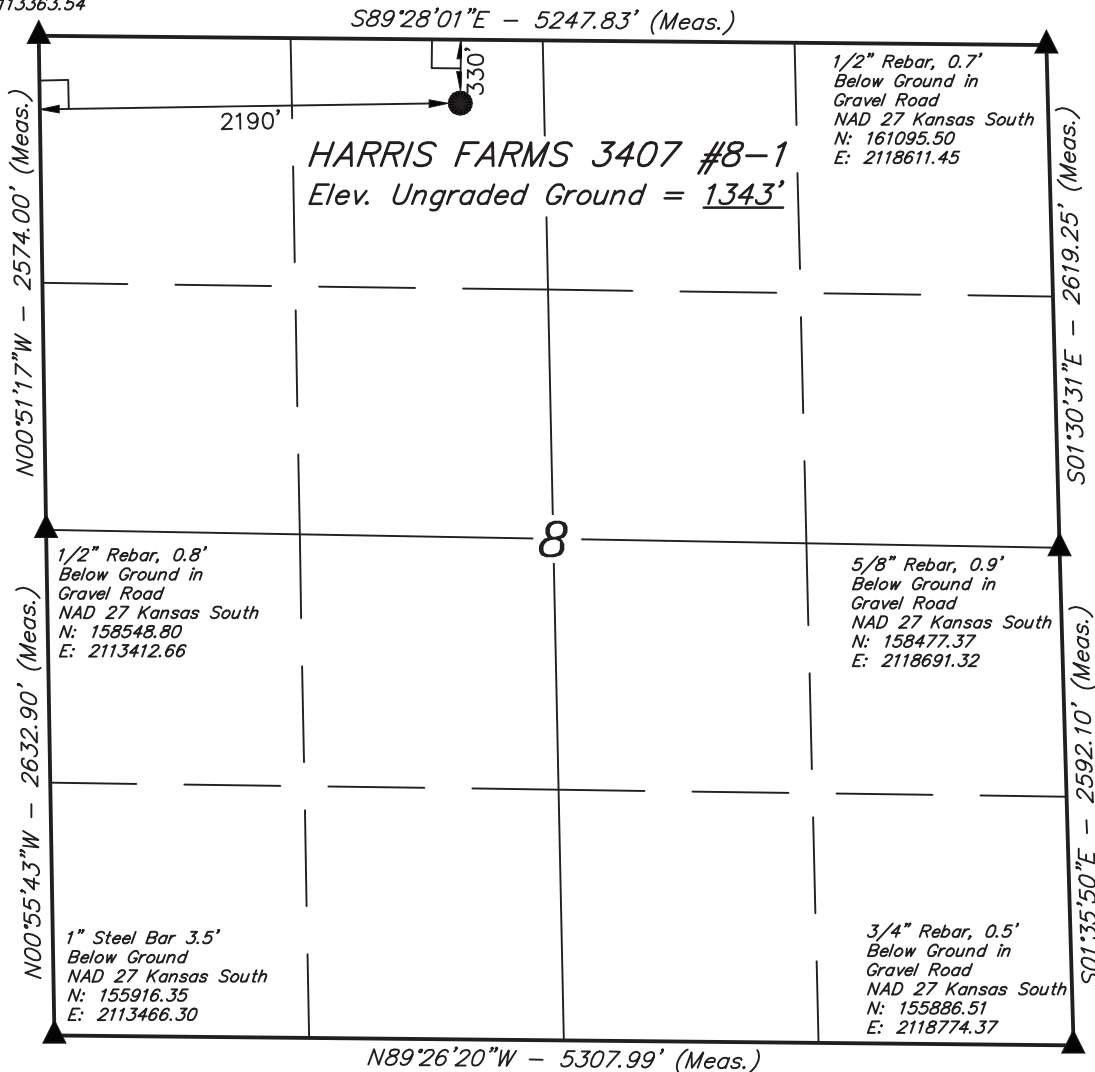


Pvt. Alum Cap,  
 LS 1360, 0.5'  
 Below Ground  
 in Gravel Road  
 NAD 27 Kansas South  
 N: 161122.42  
 E: 2113363.54

# T34S, R7W, 6th P.M.

# SGOMI

Well location, HARRIS FARMS 3407 #8-1, located as shown in the NE 1/4 NW 1/4 of Section 8, T34S, R7W, 6th P.M., Harper County, Kansas.

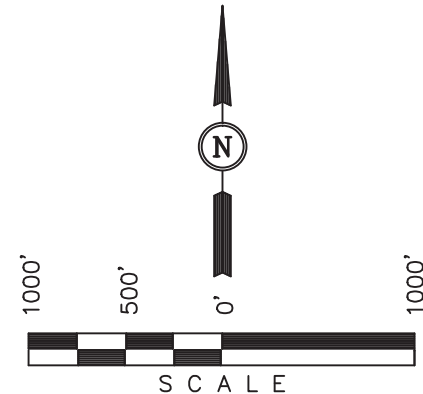


## BASIS OF ELEVATION

SPOT ELEVATION LOCATED AT THE NORTHEAST CORNER OF SECTION 22, T33S, R7W, 6th P.M. TAKEN FROM THE ANTHONY, QUADRANGLE, KANSAS, HARPER COUNTY, 7.5 MINUTE QUAD (TOPOGRAPHIC MAP) PUBLISHED BY THE UNITED STATES DEPARTMENT OF THE INTERIOR, GEOLOGICAL SURVEY. SAID ELEVATION IS MARKED AS BEING 1348 FEET.

## BASIS OF BEARINGS

BASIS OF BEARINGS IS A G.P.S. OBSERVATION.



## CERTIFICATE

THIS IS TO CERTIFY THAT THE ABOVE PLAT WAS PREPARED FROM FIELD NOTES OF ACTUAL SURVEYS MADE BY ME OR UNDER MY SUPERVISION AND THAT THE SAME ARE TRUE AND CORRECT TO THE BEST OF MY KNOWLEDGE AND BELIEF.

*[Signature]*  
 REGISTERED LAND SURVEYOR  
 REGISTRATION NO. 1360  
 STATE OF KANSAS  
 04-13-12

## LEGEND:

- └─┘ = 90° SYMBOL
- = PROPOSED WELL HEAD.
- ▲ = SECTION CORNERS LOCATED.

|                                      |
|--------------------------------------|
| NAD 83 (#8-1 SURFACE LOCATION)       |
| LATITUDE = 37°06'27.28" (37.107578)  |
| LONGITUDE = 98°06'14.75" (98.104097) |
| NAD 27 (#8-1 SURFACE LOCATION)       |
| LATITUDE = 37°06'27.19" (37.107553)  |
| LONGITUDE = 98°06'13.51" (98.103753) |
| STATE PLANE NAD 27 (KANSAS SOUTH)    |
| N: 160781.11 E: 2115560.04           |

|  |                            |                         |
|--|----------------------------|-------------------------|
| <b>UINTAH ENGINEERING &amp; LAND SURVEYING</b> |                            |                         |
| 85 SOUTH 200 EAST - VERNAL, UTAH 84078         |                            |                         |
| (435) 789-1017                                 |                            |                         |
| SCALE<br>1" = 1000'                            | DATE SURVEYED:<br>04-05-12 | DATE DRAWN:<br>04-10-12 |
| PARTY<br>L.S. J.P. C.C.                        | REFERENCES<br>G.L.O. PLAT  |                         |
| WEATHER<br>WARM                                | FILE<br>SGOMI              |                         |