



**TRILOBITE TESTING, INC.**

# DRILL STEM TEST REPORT

Shakespeare Oil Co. Inc.

**9-14s-32w Logan Co. KS**

202 W Main St  
Salem IL 62881

**Ottley #1-9**

Job Ticket: 45148

**DST#: 7**

ATTN: Tim Priest

Test Start: 2012.03.22 @ 17:14:00

## GENERAL INFORMATION:

Formation: **Johnson**

Deviated: No Whipstock: ft (KB)

Time Tool Opened: 18:58:55

Time Test Ended: 01:34:24

Test Type: Conventional Bottom Hole (Reset)

Tester: Will MacLean

Unit No: 40

**Interval: 4392.00 ft (KB) To 4442.00 ft (KB) (TVD)**

Reference Elevations: 2833.00 ft (KB)

Total Depth: 4442.00 ft (KB) (TVD)

2823.00 ft (CF)

Hole Diameter: 7.88 inches Hole Condition: Good

KB to GR/CF: 10.00 ft

**Serial #: 8652 Inside**

Press @ Run Depth: 250.31 psig @ 4393.00 ft (KB)

Capacity: 8000.00 psig

Start Date: 2012.03.22

End Date:

2012.03.23

Last Calib.: 2012.03.23

Start Time: 17:14:00

End Time:

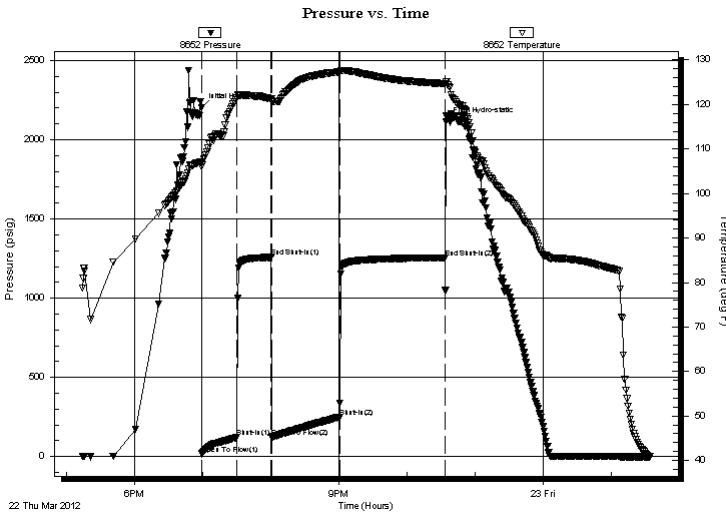
01:34:24

Time On Btm: 2012.03.22 @ 18:58:40

Time Off Btm: 2012.03.22 @ 22:34:24

**TEST COMMENT:** IF- Surface Blow Built to BOB in 24 3/4min  
IS- No Blow  
FF- Weak Surface Blow built to BOB in 36min  
FS- No Blow

## PRESSURE SUMMARY



Time (Min.)	Pressure (psig)	Temp (deg F)	Annotation
0	2204.30	106.98	Initial Hydro-static
1	17.79	105.96	Open To Flow (1)
32	122.10	121.61	Shut-In(1)
62	1258.62	121.28	End Shut-In(1)
62	123.91	120.81	Open To Flow (2)
122	250.31	127.32	Shut-In(2)
215	1255.73	124.65	End Shut-In(2)
216	2114.72	125.23	Final Hydro-static

## Recovery

Length (ft)	Description	Volume (bbl)
240.00	MCW 8%w 92%w	2.25
120.00	MCW 17%w 83%w	1.68
60.00	MCW 45%w 55%w	0.84
90.00	WCM 15%w 85%w with Few Oil Spots	1.26

## Gas Rates

	Choke (inches)	Pressure (psig)	Gas Rate (Mcf/d)

\* Recovery from multiple tests



**TRILOBITE  
TESTING, INC.**

# DRILL STEM TEST REPORT

**FLUID SUMMARY**

Shakespeare Oil Co. Inc.

**9-14s-32w Logan Co. KS**

202 W Main St  
Salem IL 62881

**Ottley #1-9**

Job Ticket: 45148

**DST#: 7**

ATTN: Tim Priest

Test Start: 2012.03.22 @ 17:14:00

## Mud and Cushion Information

Mud Type: Gel Chem

Cushion Type:

Oil API:

deg API

Mud Weight: 9.00 lb/gal

Cushion Length:

ft

Water Salinity:

41000 ppm

Viscosity: 51.00 sec/qt

Cushion Volume:

bbf

Water Loss: 7.20 in<sup>3</sup>

Gas Cushion Type:

Resistivity: ohm.m

Gas Cushion Pressure:

psig

Salinity: 4500.00 ppm

Filter Cake: 1.00 inches

## Recovery Information

Recovery Table

Length ft	Description	Volume bbf
240.00	MCW 8%m 92%w	2.246
120.00	MCW 17%m 83%w	1.683
60.00	MCW 45%m 55%w	0.842
90.00	WCM 15%w 85%m with Few Oil Spots	1.262

Total Length: 510.00 ft

Total Volume: 6.033 bbf

Num Fluid Samples: 0

Num Gas Bombs: 0

Serial #:

Laboratory Name:

Laboratory Location:

Recovery Comments: RW is .241 @ 51f = 41000

Serial #: 8652

Inside

Shakespeare Oil Co. Inc.

Oilley #1-9

DST Test Number: 7

