



TRILOBITE TESTING, INC.

DRILL STEM TEST REPORT

Shakespear Oil Co. Inc.

9-14s-32w Logan Co. KS

202 W Main St
Salem IL 62881

Ottley #1-9

Job Ticket: 45149

DST#: 8

ATTN: Tim Priest

Test Start: 2012.03.23 @ 11:22:00

GENERAL INFORMATION:

Formation: **Morrow Sand**

Deviated: No Whipstock: ft (KB)

Time Tool Opened: 13:06:10

Time Test Ended: 18:07:24

Test Type: Conventional Bottom Hole (Reset)

Tester: Will MacLean

Unit No: 40

Interval: 4440.00 ft (KB) To 4465.00 ft (KB) (TVD)

Reference Elevations: 2833.00 ft (KB)

Total Depth: 4465.00 ft (KB) (TVD)

2823.00 ft (CF)

Hole Diameter: 7.88 inches Hole Condition: Good

KB to GR/CF: 10.00 ft

Serial #: 8652

Inside

Press @ Run Depth: 27.98 psig @ 4442.00 ft (KB)

Capacity: 8000.00 psig

Start Date: 2012.03.23

End Date:

2012.03.23

Last Calib.:

2012.03.23

Start Time: 11:22:00

End Time:

18:07:24

Time On Btm:

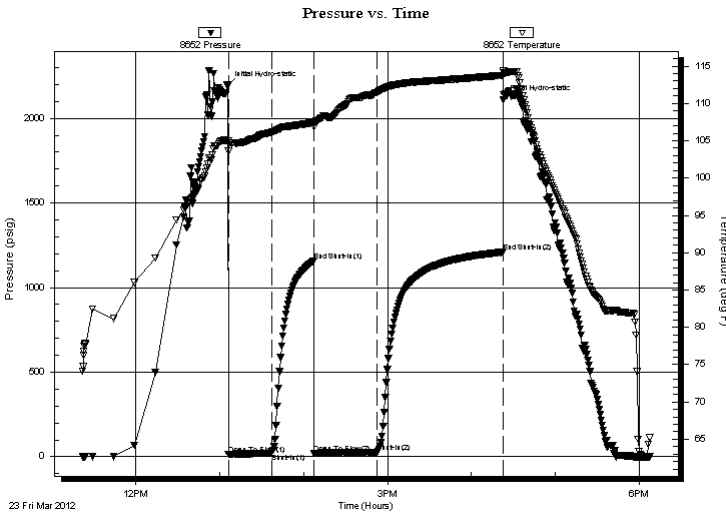
2012.03.23 @ 13:05:55

Time Off Btm:

2012.03.23 @ 16:22:54

TEST COMMENT: IF- Weak Surface Blow
IS- No Blow
FF- Weak Surface Blow
FS- No Blow

PRESSURE SUMMARY



Time (Min.)	Pressure (psig)	Temp (deg F)	Annotation
0	2195.61	104.97	Initial Hydro-static
1	14.63	103.58	Open To Flow (1)
31	20.25	106.14	Shut-In(1)
62	1157.94	107.47	End Shut-In(1)
62	21.44	106.89	Open To Flow (2)
107	27.98	111.49	Shut-In(2)
197	1209.96	113.79	End Shut-In(2)
197	2109.60	114.43	Final Hydro-static

Recovery

Length (ft)	Description	Volume (bbl)
15.00	100%m	0.07

* Recovery from multiple tests

Gas Rates

Choke (inches)	Pressure (psig)	Gas Rate (Mcf/d)



**TRILOBITE
TESTING, INC.**

DRILL STEM TEST REPORT

Shakespeare Oil Co. Inc.

9-14s-32w Logan Co. KS

202 W Main St
Salem IL 62881

Ottley #1-9

Job Ticket: 45149

DST#: 8

ATTN: Tim Priest

Test Start: 2012.03.23 @ 11:22:00

GENERAL INFORMATION:

Formation: **Morrow Sand**

Deviated: No Whipstock: ft (KB)

Time Tool Opened: 13:06:10

Time Test Ended: 18:07:24

Test Type: Conventional Bottom Hole (Reset)

Tester: Will MacLean

Unit No: 40

Interval: 4440.00 ft (KB) To 4465.00 ft (KB) (TVD)

Reference Elevations: 2833.00 ft (KB)

Total Depth: 4465.00 ft (KB) (TVD)

2823.00 ft (CF)

Hole Diameter: 7.88 inches Hole Condition: Good

KB to GR/CF: 10.00 ft

Serial #: 8322 Outside

Press @ Run Depth: psig @ 4442.00 ft (KB)

Capacity: 8000.00 psig

Start Date: 2012.03.23

End Date:

2012.03.23

Last Calib.:

2012.03.23

Start Time: 11:22:05

End Time:

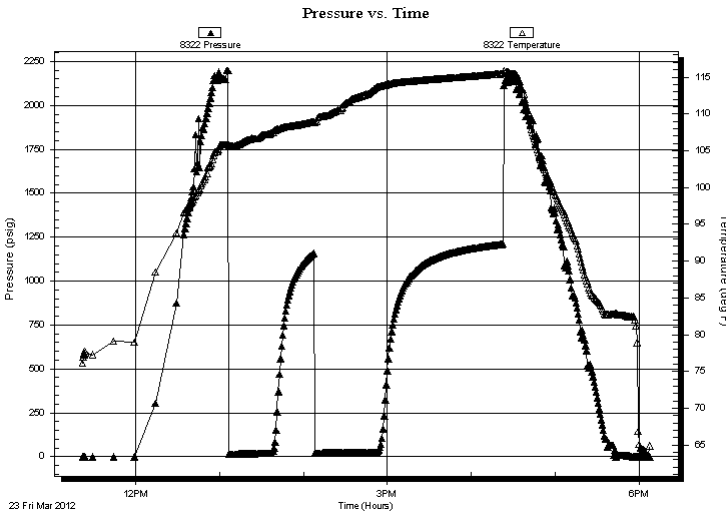
18:07:44

Time On Btm:

Time Off Btm:

TEST COMMENT: IF- Weak Surface Blow
IS- No Blow
FF- Weak Surface Blow
FS- No Blow

PRESSURE SUMMARY



Time (Min.)	Pressure (psig)	Temp (deg F)	Annotation

Recovery

Length (ft)	Description	Volume (bbl)
15.00	100%m	0.07

Gas Rates

	Choke (inches)	Pressure (psig)	Gas Rate (Mcf/d)

* Recovery from multiple tests



**TRILOBITE
TESTING, INC.**

DRILL STEM TEST REPORT

FLUID SUMMARY

Shakespear Oil Co. Inc.

9-14s-32w Logan Co. KS

202 W Main St
Salem IL 62881

Ottley #1-9

Job Ticket: 45149

DST#: 8

ATTN: Tim Priest

Test Start: 2012.03.23 @ 11:22:00

Mud and Cushion Information

Mud Type: Gel Chem

Cushion Type:

Oil API:

deg API

Mud Weight: 9.00 lb/gal

Cushion Length:

ft

Water Salinity:

ppm

Viscosity: 45.00 sec/qt

Cushion Volume:

bbbl

Water Loss: 8.76 in³

Gas Cushion Type:

Resistivity: ohm.m

Gas Cushion Pressure:

psig

Salinity: 4000.00 ppm

Filter Cake: 1.00 inches

Recovery Information

Recovery Table

Length ft	Description	Volume bbl
15.00	100%m	0.074

Total Length: 15.00 ft Total Volume: 0.074 bbl

Num Fluid Samples: 0

Num Gas Bombs: 0

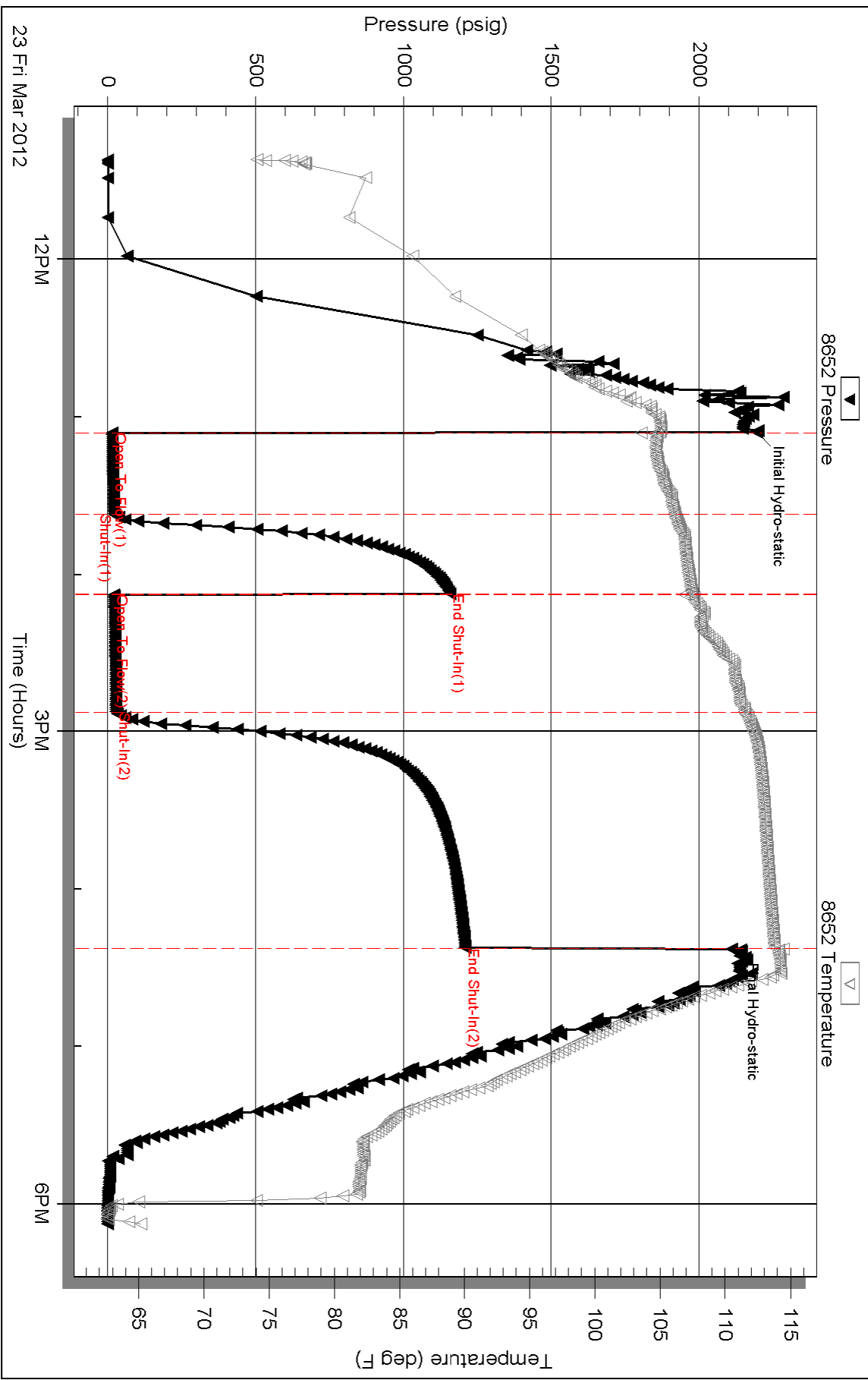
Serial #:

Laboratory Name:

Laboratory Location:

Recovery Comments:

Pressure vs. Time

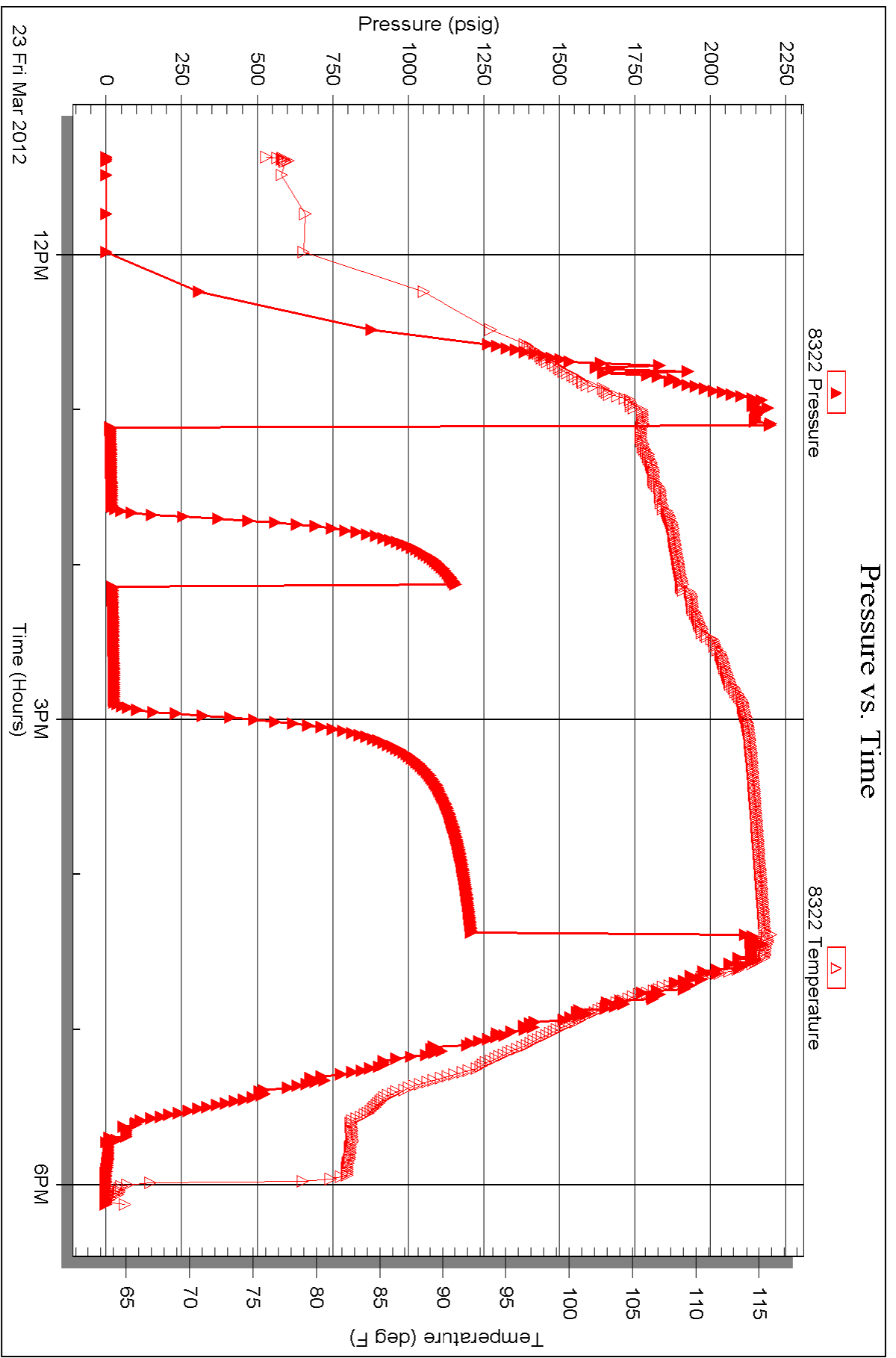


Serial #: 8322

Outside Shakespeare Oil Co. Inc.

Oilley #1-9

DST Test Number: 8



Triobite Testing, Inc

Ref. No: 45149

Printed: 2012.03.24 @ 08:53:11