

PENCO ENGINEERING, P.A.  
P.O. BOX 392  
PLAINVILLE, KS 67663  
(785) 434-4611

BILL TO:

NW 1/4, SE 1/4 & SW 1/4, NE 1/4 Section 25, T6S, R22W

April 23, 2012

LOCATION

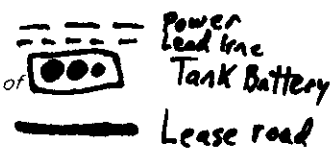
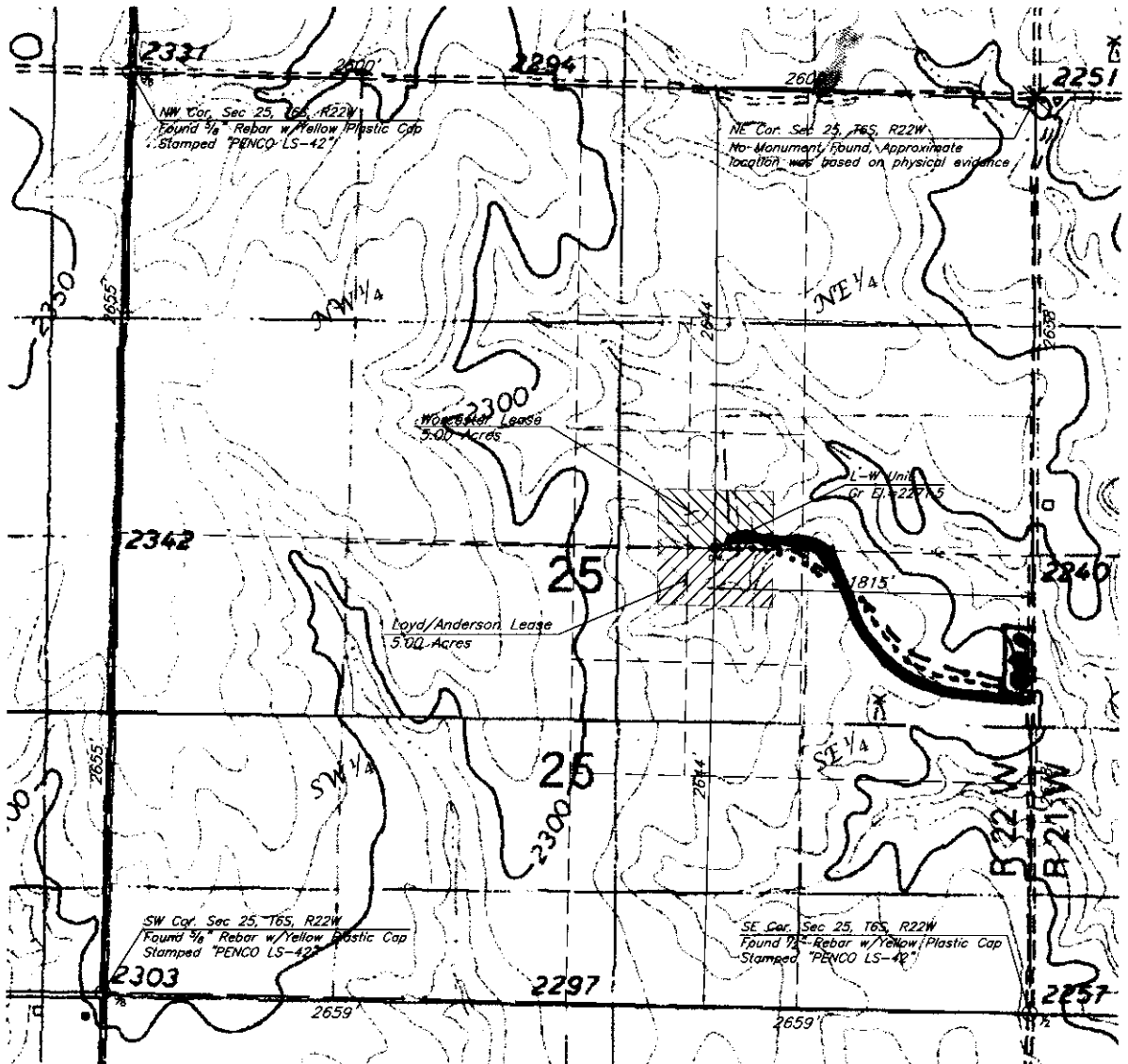
DATE

L-W Unit #1

Graham

LEASE LOCATION NO.

COUNTY



Elevations based on a USGS Quad Map Elevation tied to the Northwest Corner of Section 25, T6S, R22W. Elev.=2331

This Survey does not constitute a boundary survey.

Scale: 1" = 1000'