

ADVANTAGE ELEVATIONS

OIL FIELD SURVEYORS

BOX 8604 - PRATT, KS 67124
(620) 672-6491

420128
INVOICE NO.

REH OIL & GAS LLC OPERATOR 2 NO. Harper Ranch J C FARM

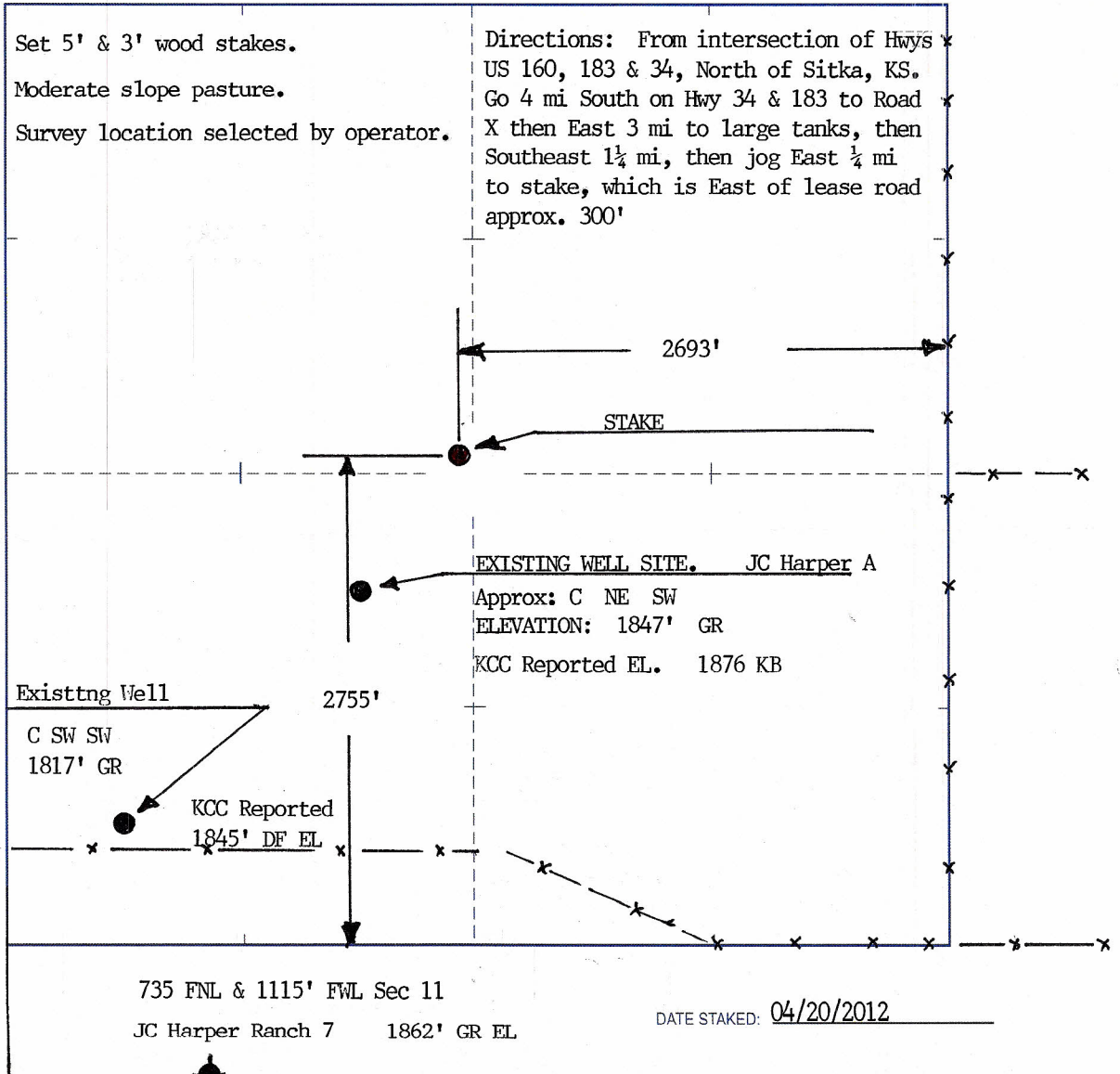
Clark COUNTY 2 S 34s T 21w R 2755' FSL & 2693' FEL LOCATION

ELEVATION: 1879' GR

REH OIL & GAS LLC
1501 E First St.
Pratt, KS 67124

AUTHORIZED BY: Doug Reh

SCALE: 1" = 1000'



Harper Ranch
Clarke Co., KS.

2/17/98

#3 Harper
#1 Harper P&A
11/4/97
#7 JC Harper "A"
P&A 2/9/56
Proposed JC #8

#5 JC Harper "A"
SWD
#2 Harper
Lead Line
Gas Line
Use Existing Road.
Tank Battery

#4 JC Harper
#6 JC Harper "A"
SWD
3" PVC Lead Line
Back side LL
SWD LINE

#2 KC Harper
P&A 9/20/54
Lead Line
+ Gas Line
+ Road
EXISTING
PVC LINE 2"
#4 KC Harper
Lead line
+ electric
Gas Extra Line

#3 KC Harper
P&A 9/22/54
#5 KC Harper
P&A 9/18/54
#1 K. Harper
P&A 9/14/54

MBR
LSE

ARMIC
SE

34s

11

21w

← 3240' →
EXISTING GAS LINE
← EXISTING WINDMILL BENCHMARK
EXISTING SALES
RD LINE

