

GEOLOGIC REPORT

DAVID J. GOLDAK

WICHITA, KANSAS
Scale 1:240 (5"=100') Imperial
Measured Depth Log

Well Name: Lonker 'A' #1
Location: Section 22 - T32S - R12W
License Number: API: 15-007-23825
Spud Date: 01 / 16 / 2012
Surface Coordinates: 1650' FSL and 990' FWL
SE - NW - SW
Region: Barber Co., KS
Drilling Completed: 01 / 24 / 2012
Bottom Hole Coordinates:
Ground Elevation (ft): 1481' K.B. Elevation (ft): 1491'
Logged Interval (ft): 3500' To: 3780' Total Depth (ft): 3780'
Formation: Arbuckle
Type of Drilling Fluid: Chemical - Mud-Co

Printed by WellSight Log Viewer from WellSight Systems 1-800-447-1534 www.WellSight.com

OPERATOR

Company: White Exploration, Inc.
Address: 2400 N. Woodlawn, Suite 115
Wichita, Kansas 67220

GEOLOGIST

Name: David J. Goldak
Company: D. J. GOLDAK, INC.
Address: 155 N. Market, Suite 710
Wichita, Kansas 67202

General Info

CONTRACTOR: Pickrell Drilling, Rig #1

BIT RECORD:

No.	Size	Make	Jets	Out	Feet	Hours
1	12-1/4	JZ-L116-RR	4-14s	263	263	1.75
2	7-7/8	JZ-ENP0123	2-18s	4010	3747	61.00
3	7-7/8	HTC-EP7348	3-14s	4780	770	41.25

SURVEYS: 263'-1.0, 1293'-0.75, 2332'-0.25, 2930'-1.0,
3500'-1.0, 4131'-1.0, 4596'-1.0, 4780'-1.25

GENERAL DRILLING AND PUMP INFORMATION:

Drilling with 36,000-42,000 lbs. on bit and 75 RPM.
Pumping 65 S/M, 8.4 B/M, and 1150 psi at standpipe.

Daily Status

01/16/12 - Spud @ 7:30 AM; Set 8-5/8" Csg at 258'
 01/17/12 - 835' Drilling
 01/18/12 - 2,144' Drilling
 01/19/12 - 3,000' Drilling; Displace @ 3,594'
 01/20/12 - 3,770' Drilling; Bit trip @ 4,010'
 01/21/12 - 4,170' Drilling
 01/22/12 - 4,570' Drilling; DST #1 @ 4,596'
 01/23/12 - 4,667' Drilling; DST #2 @ 4,686'
 01/24/12 - 4,780' CFS; TD @ 6:00 AM

DSTs

DST #1: 4,528' - 4,596' (Viola) 30" - 60" - 45" - 90"

IF: Fair blow, BOB in 5 minutes

ISI: No blow back

FF: Good blow, BOB in 30 seconds

FSI: No blow back

RECOVERY: 4,488' GIP & 50' TF, consisting of:

50' GCM (10% G, 90% M)

SIP: 1833-1808; FP: 17-22, 14-24; HP: 2306-2211; BHT: 120

DST #2: 4,656' - 4,686' (Simpson Sand) 5" - 60" - 60" - 90"

IF: Good blow, BOB in 2 minutes

ISI: Blow back building to 1 inch

FF: Good blow, BOB immed., GTS in 28 min., TSTM

FSI: Blow back building to 1 inch

RECOVERY: 470' Total Fluid, consisting of:

50' CGO (20% G, 80% O)


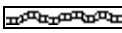
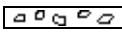
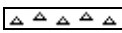
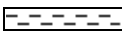


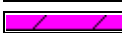
120' GMCO (10% G, 70% O, 20% M)





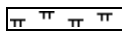
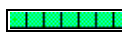
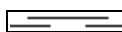
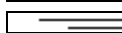
180' GOCM (10% G, 30% O, 60% M)

120' GOCM (30% G, 10% O, 60% M)







SIP: 1746-1500; FP: 27-59, 78-150; HP: 2340-2288; BHT: 126

ROCK TYPES

	Anhy
	Bent
	Brec
	Cht
	Clyst
	Coal
	Congl
	Dol

	Gyp
	Igne
	Lmst
	Meta
	Mrlst
	Salt
	Shale
	Shcol

	Shgy
	Sltst
	Ss
	Till
	Carb sh
	Dol
	Dtd
	Gry sh

	Sandylms
	Shale
	Sltstn
	Shlyslts
	Sltyssh
	Lms

ACCESSORIES

MINERAL

- Anhy
- Arggrn
- Arg
- Bent
- Bit
- Breclrag
- Calc
- Carb
- Chtdk
- Chtlt
- Dol
- Feldspar
- Ferrpel
- Ferr
- Glau
- Gyp
- Hvymin
- Kaol
- Marl
- Minxl
- Nodule
- Phos
- Pyr



- Salt
- Sandy
- Silt
- Sil
- Sulphur
- Tuff
- Chlorite
- Dol
- Sand
- Silty

FOSSIL

- Algae
- Amph
- Belm
- Bioclst
- Brach
- Bryozoa
- Cephal
- Coral
- Crin
- Echin
- Fish
- Foram



- Fossil
- Gastro
- Oolite
- Ostra
- Pelec
- Pellet
- Pisolite
- Plant
- Strom
- Fuss
- Oomold

STRINGER

- Anhy
- Arg
- Bent
- Coal
- Dol
- Gyp
- Ls
- Mrst
- Sltstrg
- Ssstrg
- Carbsh



- Clystn
- Dol
- Grysh
- Gryslt
- Lms
- Sandylms
- Sh
- Sltstn

TEXTURE

- Boundst
- Chalky
- Cryxln
- Earthy
- Finexln
- Grainst
- Lithogr
- Microxln
- Mudst
- Packst
- Wackest

OTHER SYMBOLS

POROSITY TYPE

- Earthy
- Fenest
- Fracture
- Inter
- Moldic
- Organic
- Pinpoint
- Vuggy

SORTING

- Well
- Moderate
- Poor

ROUNDING

- Rounded
- Subrnd
- Subang
- Angular

OIL SHOWS

- Even
- Spotted
- Ques
- Dead
- Gas show

INTERVALS

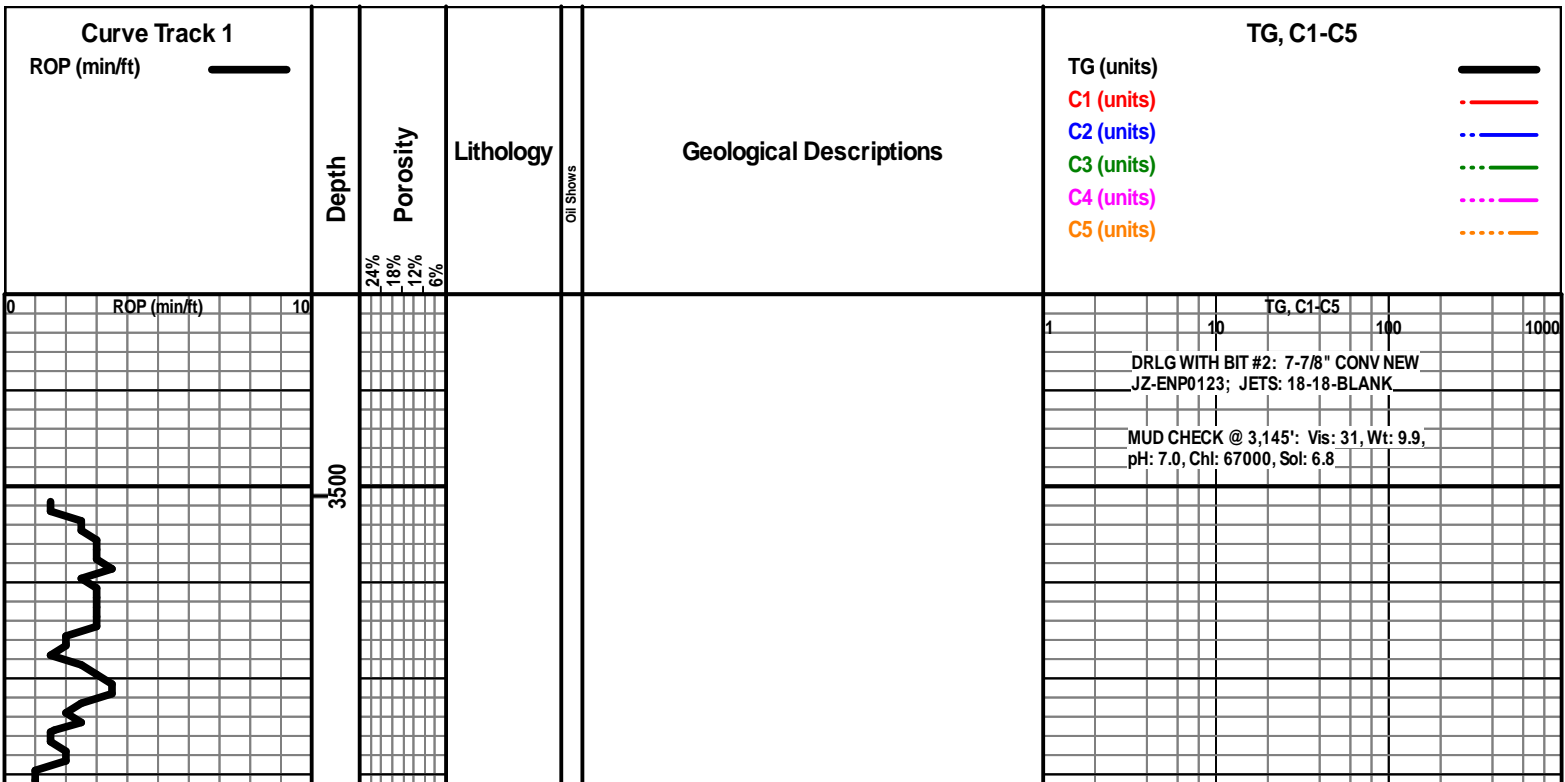
- Core
- Dst

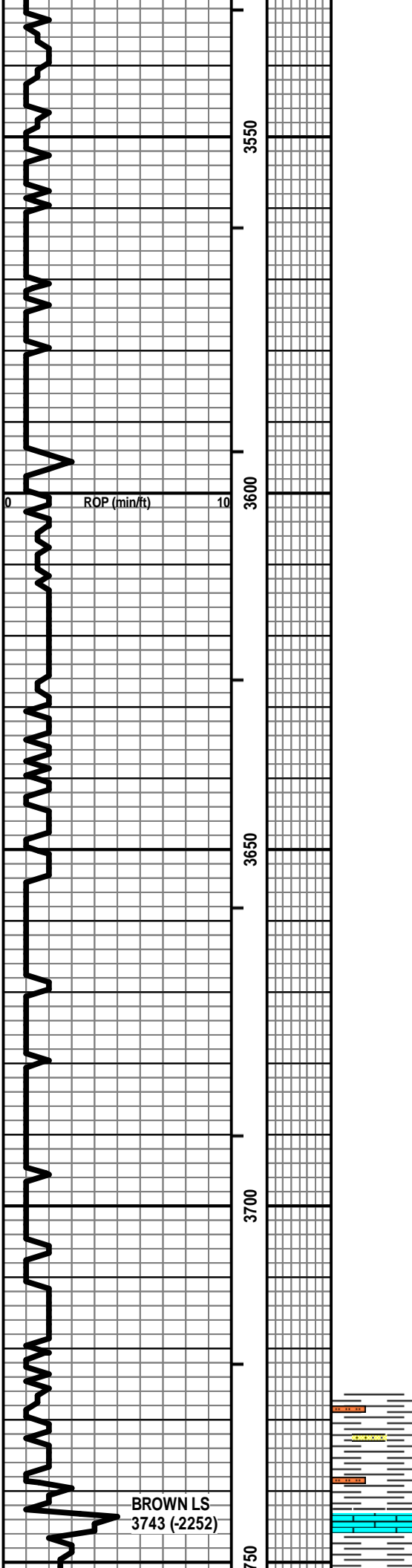


- Dst/2
- Dst

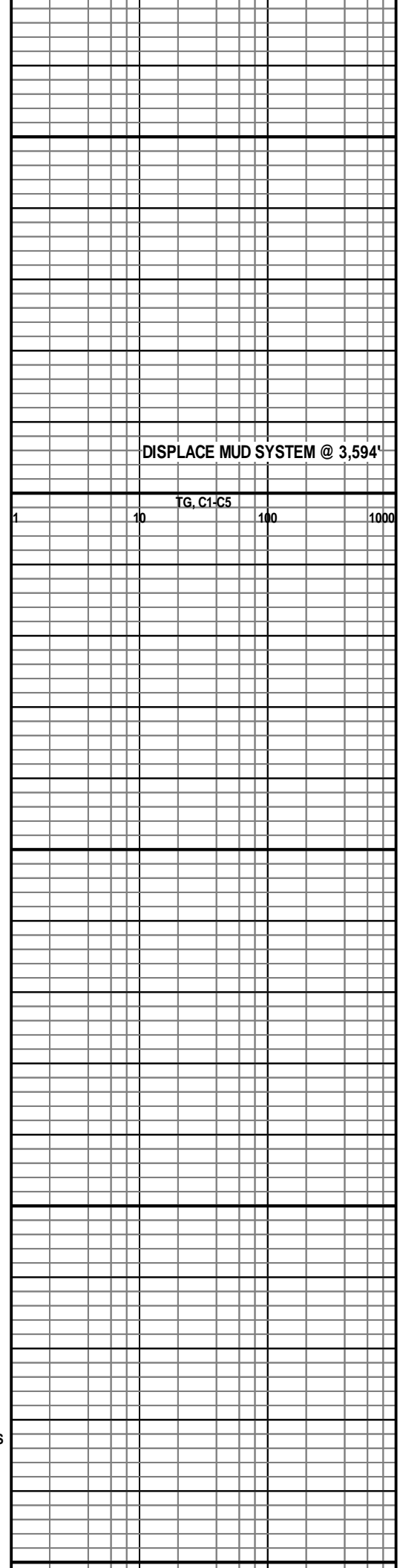
EVENTS

- Rft
- Sidewall
- Conn





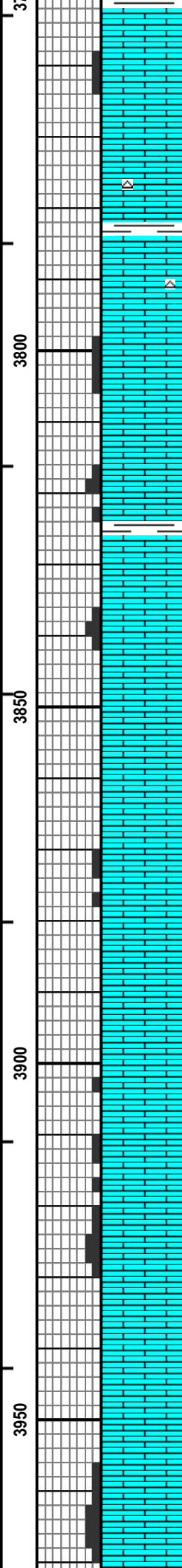
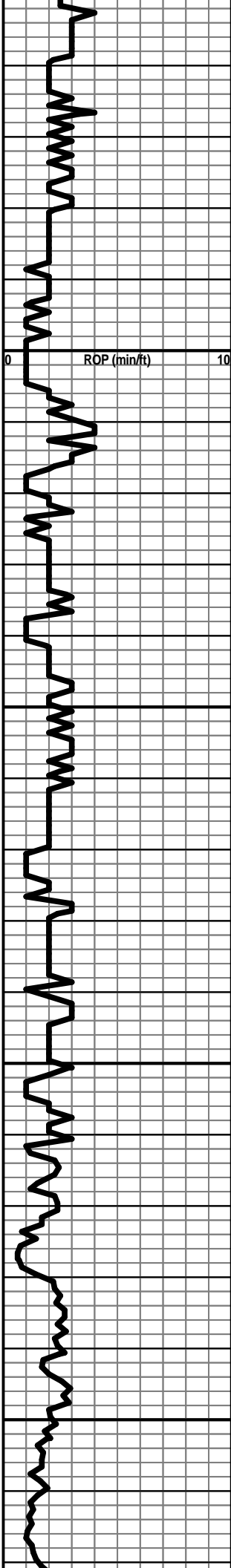
SH - LT / MED GY W/ SCAT SLTST - LT / MED GY W/ SCAT SS
 - LT GY, VF QTZ GR, SR / R, W SRTD, F INTGR POR, NS



DISPLACE MUD SYSTEM @ 3,594'

TG, C1-C5

1 10 100 1000



LS - TAN / BRN, VF / F XLN, FOSS IN PT, SCAT P INTXLN POR, PRED DNS, NS

Vis: 54, Wt: 9.0

LS - TAN / CRM / GY, MOT IN PT, VF / F XLN, SL FOSS, PRED DNS, NS TR CHT - LT GY / WHT

LS - CRM / TAN / SCAT GY, VF / F XLN, FOSS IN PT, SCAT P INTXLN + PPT POR, CHKY IN PT, PRED DNS, NS

TG, C1-C5

LS - CRM / GY / TAN, VF / F XLN, FOSS, SCAT P/F INTXLN + PPT POR, CHKY IN PT, PRED DNS, NS

LS - CRM / TAN / BRN, VF / F XLN, SL FOSS, SUBCHKY IN PT, PRED DNS, NS

LS - TAN / BRN / SCAT CRM, VF / F XLN, SCAT M REXLN CALC, FOSS IN PT, TR P INTXLN + PPT POR, PRED DNS, NS

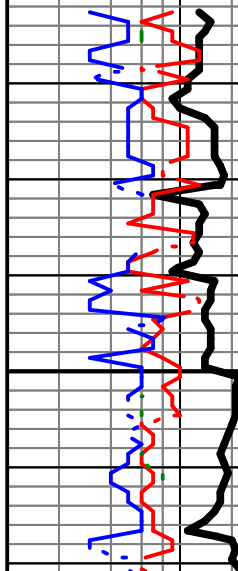
GAS UNIT COMPUTER TURNED OFF;
RESTART AFTER ARRIVING ON LOCATION

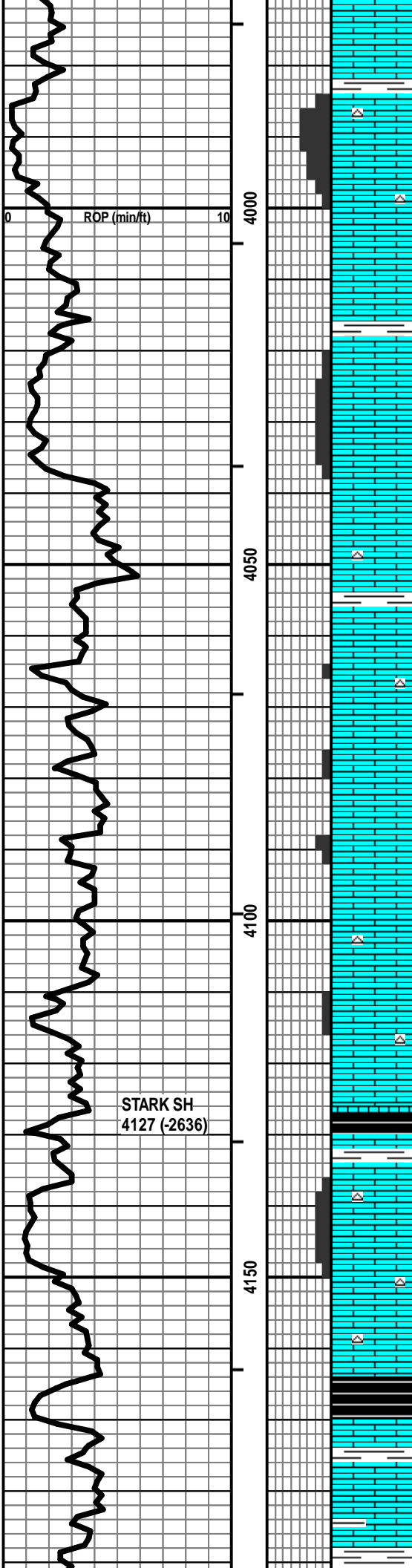
LS - CRM / TAN / GY, VF / F XLN, FOSS IN PT, P / SCAT F INTXLN + VUG POR, SCAT CHKY / DNS, NS

Vis: 45, Wt: 8.9,
YP: 14, Gels: 14/35,
pH: 11.0, WL: 9.6,
Chl: 4000, Sol: 4.0,
LCM: 0#

LS - TAN / GY / BRN, VF / F XLN, SCAT CRYPTO XLN, SL FOSS + OOL, PRED DNS, NS

LS - CRM / TAN, VF / F XLN, SCAT REXLN CALC, FOSS IN PT, SCAT OOL, P / SCAT F VUG + INTXLN POR, PRED DNS, NS





LS - CRM / TAN, VF / F XLN, OOL, SL FOSS, F / G OOM POR, F INTXLN POR, SCAT CHKY, NS W/ SCAT CHT - LT GY / WHT

LS - CRM / TAN / SCAT GY, MOT IN PT, VF / F XLN, FOSS, OOL IN PT, P / F INTXLN + PPT POR, SCAT CHKY, NS

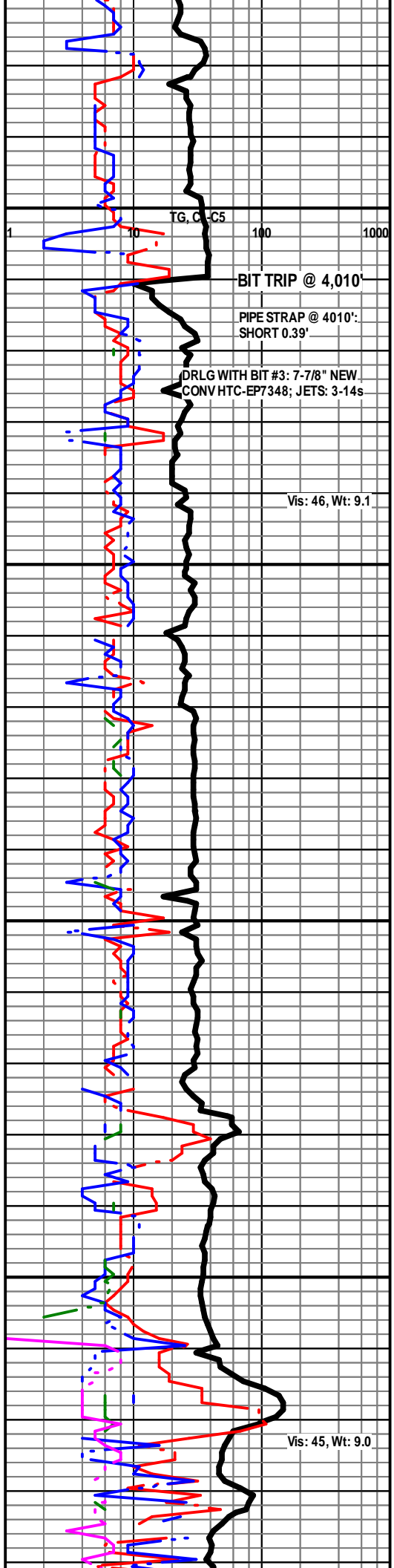
LS - CRM / TAN, VF / F XLN, SCAT CRYPTO XLN, SL FOSS, CHKY IN PT, PRED DNS, NS W/ SCAT CHT - LT GY

LS - LS - CRM / TAN / GY, VF / F XLN, SL FOSS + OOL, P / SCAT F VUG POR, TR P OOM POR, CHKY IN PT / DNS, NS

LS - CRM / TAN / BRN, VF / F XLN, SL FOSS, PRED DNS, NS W/ SCAT CHT - LT GY / WHT

LS - CRM / TAN, PRED F XLN, OOL, SL FOSS, P / SCAT F OOM POR, PRED P INTXLN POR TO DNS, NS W/ SCAT CHT - LT GY / WHT

LS - GY / TAN / BRN, VF / F XLN, SL FOSS, SCAT OOL, SUBCHKY IN PT, PRED DNS, NS



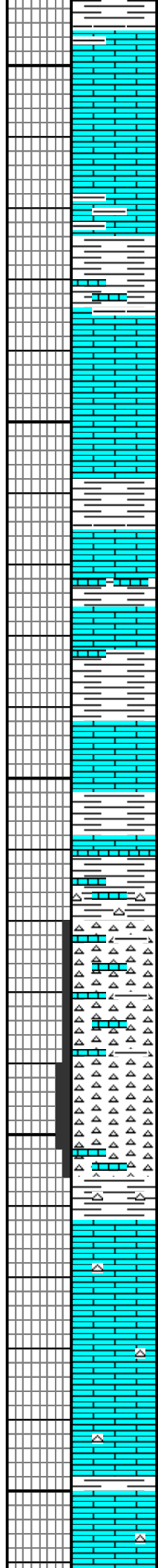
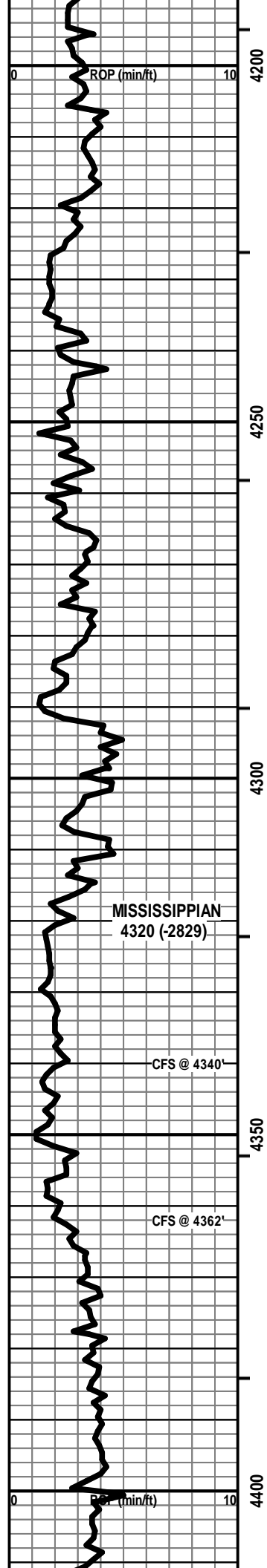
BIT TRIP @ 4,010'

PIPE STRAP @ 4010': SHORT 0.39'

DRLG WITH BIT #3: 7-7/8" NEW CONVHTC-EP7348; JETS: 3-14s

Vis: 46, Wt: 9.1

Vis: 45, Wt: 9.0



LS - GY / CRM / TAN, VF / F XLN, FOSS IN PT, CHKY IN PT, PRED DNS, NS

LS - TAN / BRN / CRM, MOT IN PT, VF / F XLN, SL FOSS, PRED DNS, NS W/SH - GY / GRN / SCAT BLK

LS - CRM / GY / SCAT TAN, VF XLN, SL FOSS, CHKY IN PT, PRED DNS, NS W/SH - GY / GRN / SCAT BLK, CALC IN PT

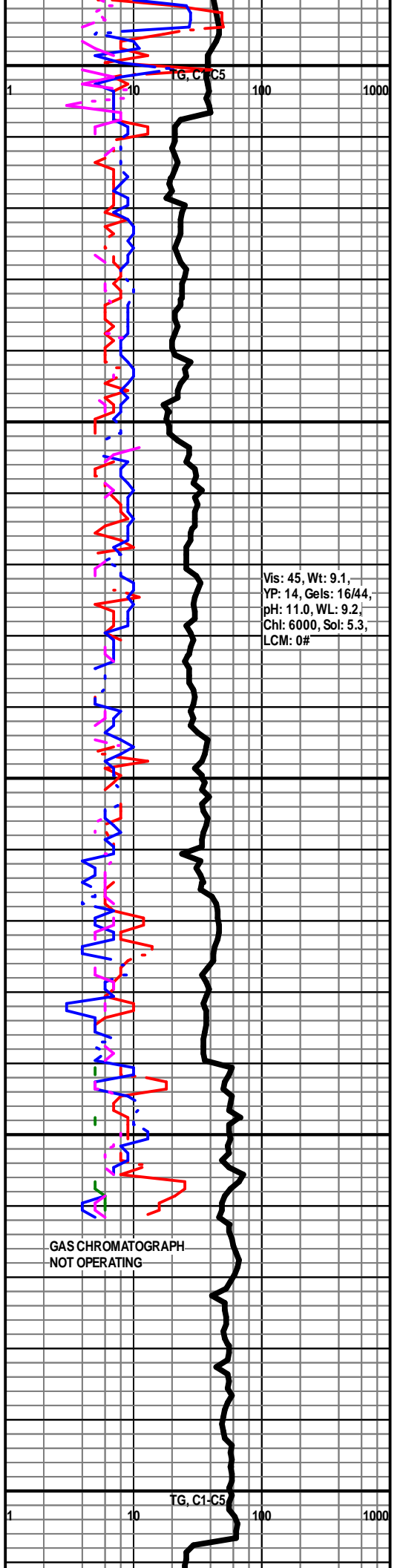
LS - CRM / GY / SCAT TAN, VF / CRYPTO XLN, TR FOSS, SCAT CJKY, PRED DNS, NS W/SH - GY / GRN, CALC IN PT

CHT - LT GY / WHT / CRM / SCAT YEL + RED, AREN IN PT, VP / NO VIS POR W/LS - CRM / TAN, VF / F XLN, CHKY IN PT, PRED DNS W/SH - GY / GRN OVERALL: SCAT GILS STN, NSFO, NO ODOR

CHT - WHT / LT GY / CRM, SL WEATH IN PT, SCAT P VUG POR, TR P TRIP POR, SSGB, SCAT GILS STN, NSFO, NO ODOR, NO / SCAT F FLOUR + CUT W/LS - CRM / TAN, VF / F XLN, CHKY IN PT, PRED DNS

LS - CRM / TAN, VF / F / M XLN, SL FOSS, CHTY IN PT, CHKY IN PT, PRED DNS, NS W/CHT - LT GY / WHT / CRM, VIT W/ ABNT SH - VARICOL

LS - CRM / TAN, VF / F / M XLN, SL FOSS, CHTY IN PT, CHKY IN PT, PRED DNS, NS W/CHT - LT GY / WHT / CRM, VIT W/ ABNT SH - VARICOL



Vis: 45, Wt: 9.1,
YP: 14, Gels: 16/44,
pH: 11.0, WL: 9.2,
Chl: 6000, Sol: 5.3,
LCM: 0#

GAS CHROMATOGRAPH
NOT OPERATING

