

MACKLIN M. ARMSTRONG

Geologist

License Number 743

316-209-5047

Scale 1:240 Imperial

Well Name: Debes Unit 'A' No. 1-14
Surface Location: Sec 14 T18S R24W
Bottom Location: 2310' FSL and 1320' FEL
API: 15-135-25356
License Number: 9408
Spud Date: 2/9/2012
Region: Ness County
Drilling Completed: 2/16/2012
Surface Coordinates:
Bottom Hole Coordinates:
Ground Elevation: 2302.00ft
K.B. Elevation: 2311.00ft
Logged Interval: 3300.00ft
Total Depth: 4317.00ft
Formation: Mississippi, Cherokee Sand, Fort Scott, Marmaton
Drilling Fluid Type: Chemical/Fresh Water Gel
Time: 4:30 PM
Time: 4:22 PM
To: 4317.00ft

OPERATOR
Company: Trans Pacific Oil Corporation
Address: 100 South Main Street
Wichita, Kansas 67202

Contact Geologist: Beth Isern
Contact Phone Nbr: 316-262-3596
Well Name: Debes Unit 'A' No. 1-14
Location: Sec 14 T18S R24W
Pool: Oil
State: Kansas
API: 15-135-25356
Field: Nirvana
Country: USA

SURFACE CO-ORDINATES

Well Type: Vertical
Longitude: 99.939878
N/S Co-ord:
E/W Co-ord:
Latitude: 38.485656

LOGGED BY

Company: Macklin M. Armstrong
Address: 100 South Ridge Road
Wichita, Kansas 67209
Phone Nbr: 316-209-5047
Logged By: Macklin M. Armstrong
Name: Macklin M. Armstrong
Kansas License Number 743

CONTRACTOR

Contractor: Duke Drilling
Pin #: 4

Address: 100 South Ridge Road
Wichita, Kansas 67209

Phone Nbr: 316-209-5047
Logged By: Macklin M. Armstrong

Name: Kansas License Number 743

CONTRACTOR

Contractor: Duke Drilling
Rig #: 4
Rig Type: mud rotary
Spud Date: 2/9/2012
TD Date: 2/16/2012
Rig Release: 2/17/2012
Time: 4:30 PM
Time: 4:22 PM
Time: 3:30 PM

ELEVATIONS

K.B. Elevation: 2311.00ft
K.B. to Ground: 9.00ft
Ground Elevation: 2302.00ft

NOTES

Date	Depth at 7 am	Activity
2-09-12	MIRU	Spud at 4:30 pm
2-10-12	500	Drilling
2-11-12	2527	Drilling
2-12-12	3300	Drilling
2-13-12	3925	Drilling
2-14-12	4102	CFS
2-15-12	4240	TIH after DST No. 2
2-16-12	4312	TIH after DST No. 3
2-17-12	4317	TOH to Lay Down Pipe
2-18-12	4317	Set 4 1/2"

Surface Casing: 8 5/8" 22# at 223'
Production Casing: 4 1/2" 10.5# at 4312'

Deviation: 227 - 1/2°
974 - 1/2°
1531 - 3/4°
2031 - 0°
2527 - 1/2°
3021 - 1/2°
3584 - 3/4°
4024 - 1°

Bit Record:	Make	Type	Depth In	Depth Out	Hours
	Varel	HE21MS	227	4317	71 1/2 hrs

Drill Stem Tests:

DST No. 1 3984 to 4024 Formation: Lansing
30-60-60-90
Recovery: 280' GIP
15' CO (Gravity 41.8 @ 60°)
575' GOW with a thin scum of oil (1%G, 99%W - Chl 72,000 ppm)

IHP 1898 FHP 1896
IFP 25-131 FFP 135-297
ISIP 1321 FSIP 1282
Temp 118°

DST No. 2 4196 to 4240 Formation: Fort Scott
30-60-60-90
Recovery: 60' Mud with a few oil spots and a gassy odor
IHP 2024 FHP 2012
IFP 17-37 FFP 30-44
ISIP 963 FSIP 942
Temp 112°

DST No. 3 4255 to 4312 Formation: Cherokee Sand and Mississippi
30-75-30-90
Recovery: 5' CO (gravity 38.4 @ 60°)
35' MO (10%M, 90%O)

IHP 2055 FHP 2035
IFP 19-26 FFP 26-31
ISIP 1034 FSIP 1065
Temp 111°

DST No. 4 4257 to 4317 Formation: Mississippi
30-75-60-90
Recovery: 80' GIP
55' CO (gravity 38.4 @ 60°)
110' HOCM (26%O, 72%M)

IHP 2056 FHP 2025
IFP 26-43 FFP 50-82

110' HOCM (26%O, 72%M)

IHP 2056 FHP 2025
IFP 26-43 FFP 50-82
ISIP 1263 FSIP 1222


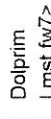
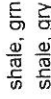

Temp 110°

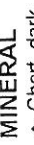
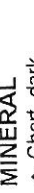
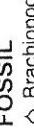
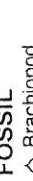
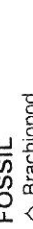

Formation	Sample	E-Log	Datum	Well 1	Well 2	Well 3
Anhydrite	1573	1575	+736	+2	0	-1
B/Anhydrite	1606	1610	+701	+9	-2	-1
Heebner	3680	3690	-1379	+1	-4	+3
Toronto	3700	3708	-1397	-1	-2	+2
Lansing	3724	3732	-1421	-5	-3	-2
B/Kansas City	4016	4028	-1717	-1	-3	+2
Marmaton	4054	4064	-1753	-7	-3	-2
Altamont	4088	4098	-1787	+1	-1	+1
Pawnee	4126	4136	-1825	0	-2	+2
Fort Scott	4214	4223	-1912	0	+1	+2
Cherokee Shale	4238	4248	-1937	0	-1	+2
Mississippi	4300	4308	-1997	+21	0	+7
Total Depth	4317	4328	-2006			

Well 1: Dunne-Gardner Petroleum Debes No. 1 C NW SE Sec 14 T18S R24W
Well 2: Palomino Petroleum Debes Unit No. 1 1010' FSL and 1450' FEL Sec 14 T18S R24W
Well 3: Thunderbird Drilling and Petroleum Resources Debes 'B' No. 1 C NE SE Sec 14 T18S R24W

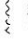
Pipe was set to further test the Mississippi zone.

Respectfully submitted,
Macklin M. Armstrong

ROCK TYPES		
	Dolprim	Carbon Sh
	Lmst fw7>	Shcol
	shale, grn	Ss
	shale, gry	

MINERAL	
	Chert, dark
	Chert, White
	Brachiopod
	Crinoids
	Fossils < 20%
	Oolite

ACCESSORIES

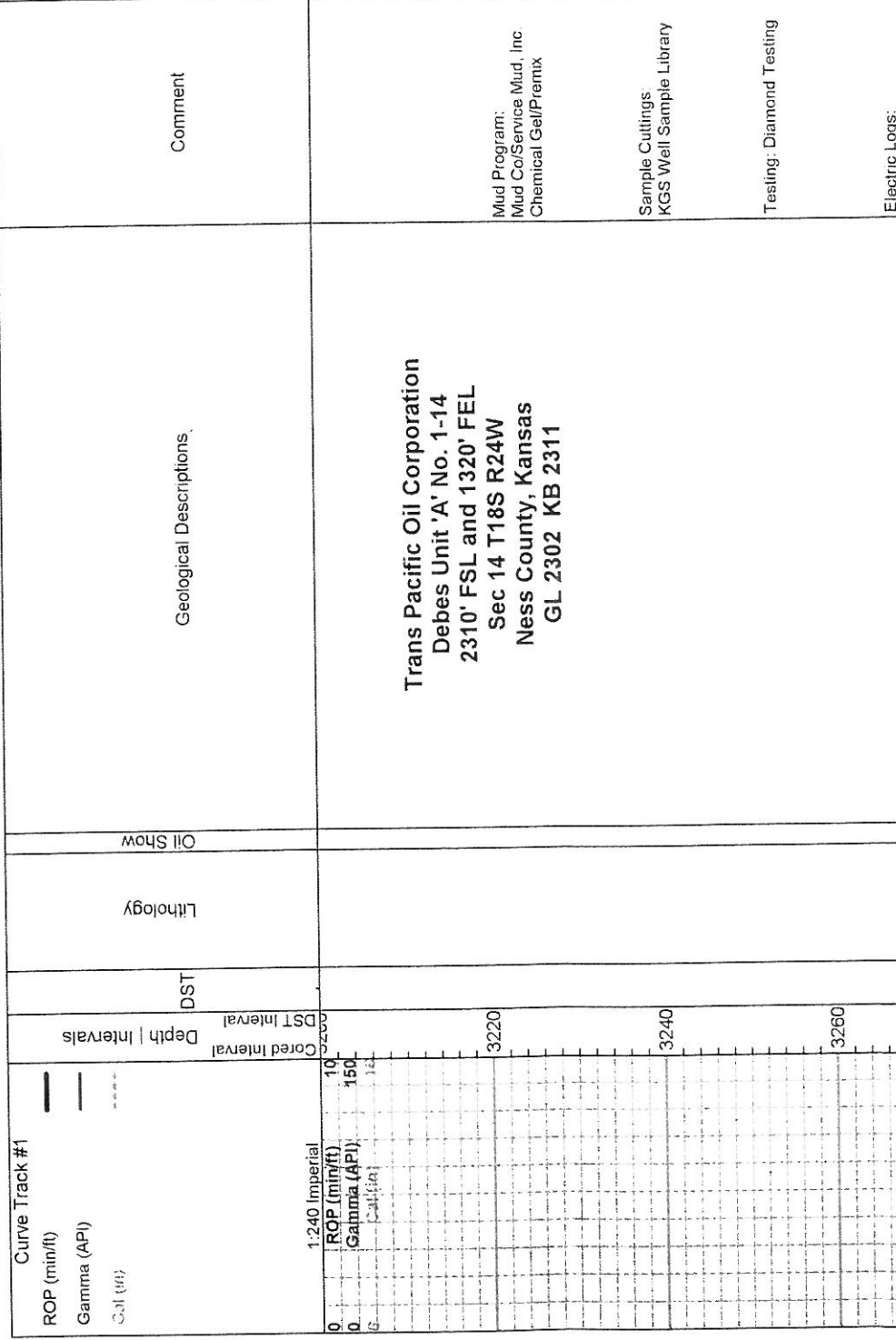
STRINGER	
	Chert
	Shale

TEXTURE	
	Chalky

OTHER SYMBOLS

DST	
	DST Int
	DST alt
	Core

Printed by GEOstrip VC Striplog version 4.0.7.0 (www.grsi.ca)



Trans Pacific Oil Corporation
Debes Unit 'A' No. 1-14
2310' FSL and 1320' FEL
Sec 14 T18S R24W
Ness County, Kansas
GL 2302 KB 2311

Mud Program:
Mud Co/Service Mud, Inc
Chemical Gel/Premix

Sample Cuttings:
KGS Well Sample Library

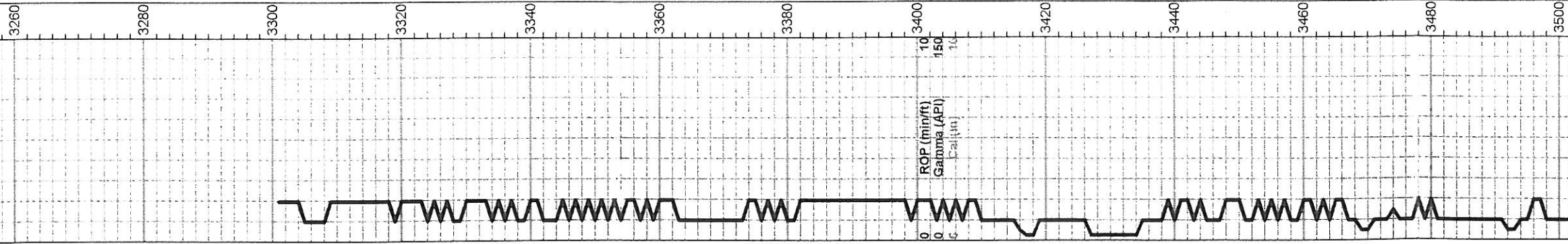
Testing: Diamond Testing

Electric Logs:

Testing: Diamond Testing

Electric Logs:
Log Tech
DIL
CNL/CDL

Deviation:
227' - 1/2°
974' - 1/2°
1531' - 3/4°
2031' - 0°
2527' - 1/2°
3021' - 1/2°
3584' - 3/4°
4024' - 1°



Geologist on Loc at 3620'
5:35 pm 2-12-12

Ls-lt gry/tan f/mxln mhd sl ciky no por

Ls-AA sm Ls-wt fxin soft ciky fos no por

Ls-crm/tan/lt gry f/mxln mhd fos no por

-----Heebner 3680 -1369-----

Sh-blk carb

Ls-crm/tan fx/mxln mhd/dns sl fos no por

Sh-gry/dk gry

-----Toronto 3700 -1389-----

Ls-crm/tan f/cxln mhd sl ciky sl fos no por

Sh-gry/dk gry

-----Lansing 3724 -1421-----

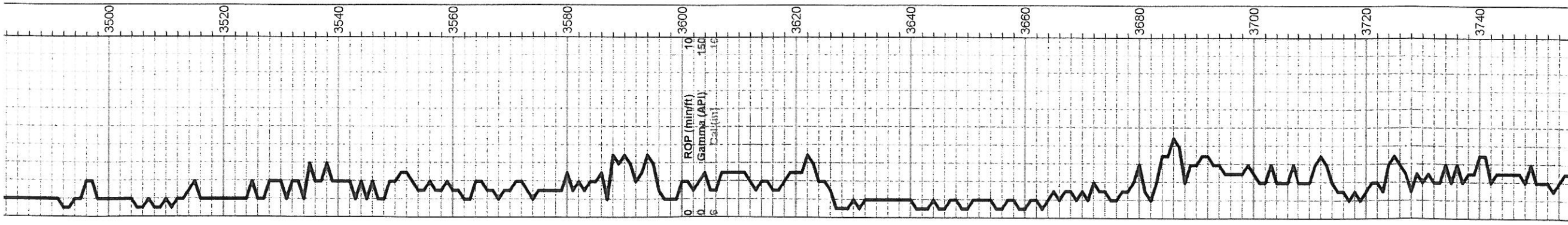
Ls-crm/lt gry/tan f/mxln mhd sl fos no por sm Cht-wt/lt gry fsh

Ls-crm/tan fxin mhd sl fos sl chty no por sm Cht-AA

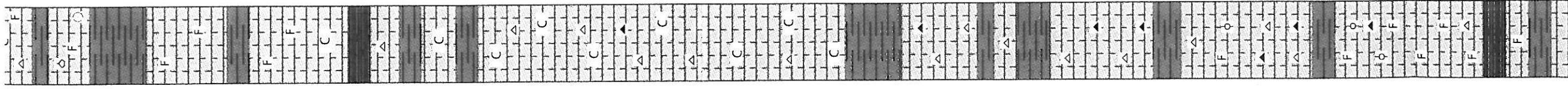
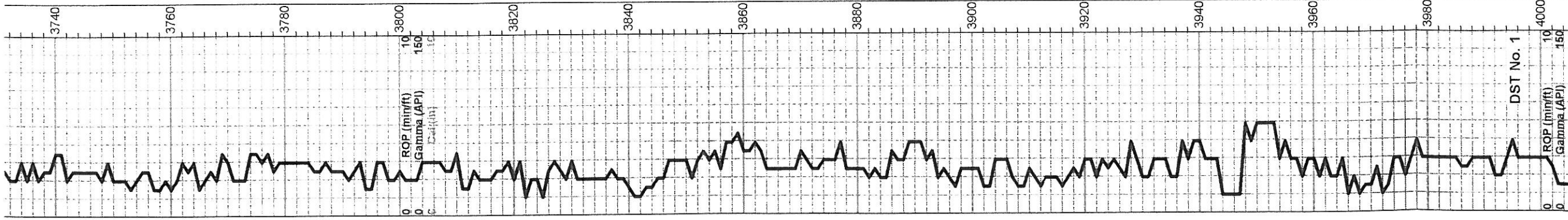
Sh-gry/dk gry

Ls-crm/tan f/mxln mhd sl fos sm free crin and brach no por
sm Cht-wt fsh opac

Sh-gry/dk gry

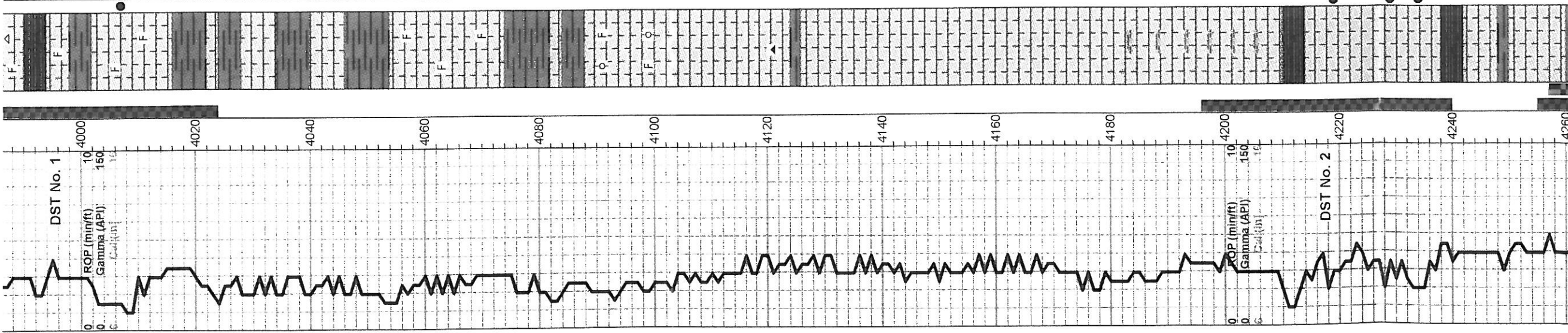


ROP (min/ft)
Gamma (API)
Caliper

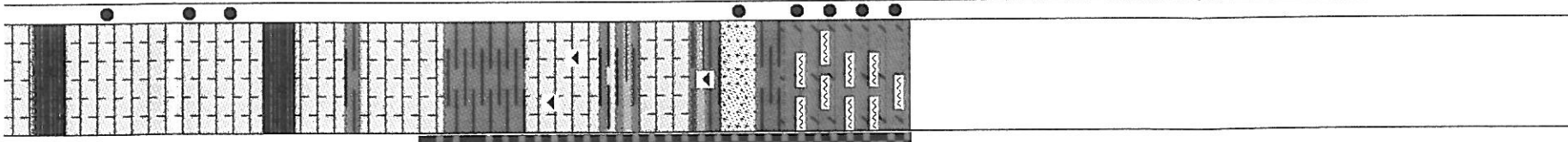
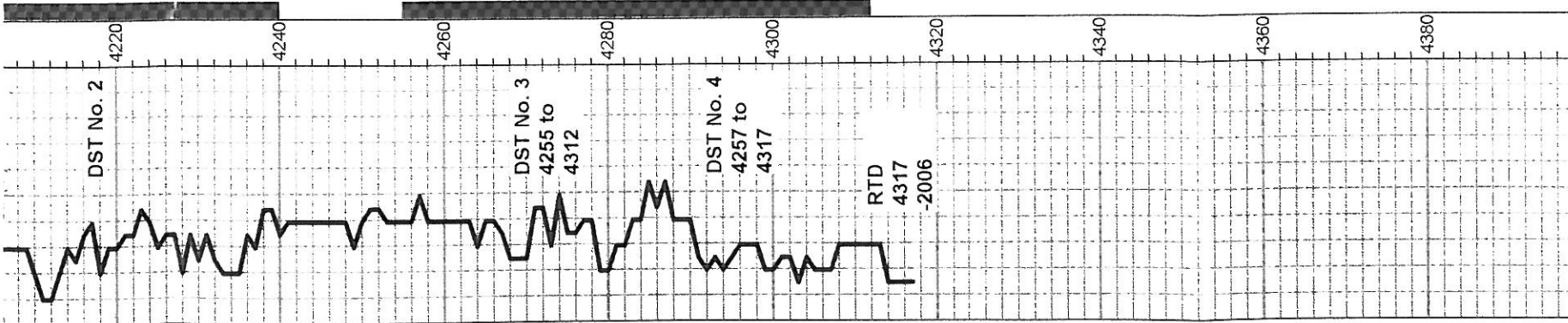


Ls-crm/tan fxin mhd sl tos sl cnty no por sm Cht-AA
 Sh-gry/dk gry
 Ls-crm/tan f/mxin mhd sl fos sm free crin and brach no por sm Cht-wt fsh opac
 Sh-gry/dk gry
 Ls-crm/tan f/mxin mhd sl fos no por
 Ls-AA
 Sh-gry/dk gry
 Ls-crm/tan fxin dns sl fos no por
 Ls-crm fxin mhd sl ciky no por
 Sh-blk carb
 Ls-crm/lt tan fxin mhd/dns no por sm Cht-lt gry fsh opac
 Sh-gry/dk gry
 Ls-crm/lt tan fxin mhd/dns sl ciky no por
 Sh-gry/dk gry
 Ls-crm fxin mhd/dns sl ciky no por sm Cht-wt fsh opac
 Ls-AA
 Ls-crm/lt tan fxin mhd sl ciky sm Cht-wt fsh opac
 Ls-crm/lt tan fxin mhd pr interxin por nsfo sm Cht-wt/gry fsh opac
 Ls-crm/lt tan fxin mhd sl ciky no por sm Cht-wt fsh opac
 Ls-AA
 Ls-crm fxin mhd sl ciky no por sm Cht-wt/lt gry fsh opac
 Ls-AA
 Sh-gry/dk gry
 Ls-crm/tan sm brn fxin mhd/dns no por sm Cht-wt/lt gry/gry fsh opac
 Ls-crm/tn fxin mhd no por sm Cht-AA
 Sh-gry/dk gry
 Ls-crm/tan fxin mhd no por sm Cht-lt gry/wt fsh opac
 Sh-gry/dk gry
 Ls-crm/tan fxin mhd/dns no por sm Cht-lt gry fsh opac and brn fsh semi trans to opac
 Ls-AA
 Sh-gry/dk gry
 Ls-crm/tan fxin mhd/dns no por sm Cht-gry fsh opac and brn fsh semi trans to opac
 Ls-tan fxin mhd fos ooc gd ooc por nsfo
 Ls-tan/crm f/mxin dns no por sm Cht-gry/brn/gry wt fsh opac
 Ls-tan/crm f/mxin mhd no por sm Cht-AA
 Sh-gry/dk gry
 Ls-crm/lt tan fxin fos sl ooc pr ooc por nsfo sm Cht-gry/brn/gry wt fsh opac
 Ls-tan/lt gry fxin mhd fos sl ool and ooc no por
 Ls-crm f/mxin mhd sl fos no por
 Ls-AA sm Cht-wt fsh opac
 Sh-blk carb
 Ls-crm f/mxin mhd sl fos no por
 Sh-gry/dk gry
 Ls-tan mxin mhd hinhlv fos nd interfos npr fr vint npr nd cut

DST No. 1 3984 to 4024
 30-60-60-90
 1st Open: BOB in 14 1/2"
 2nd Open: BOB in 14 1/2"
 Recovery: 280' GIP
 15' CO
 575' GOW with
 scum of oil
 (1%G, 99%W
 Ch 72,000 ppm)
 IHP 1898 FHP 1896
 JFP 25-131 FFP 135-297
 ISIP 1321 FSIP 1282
 Temp 118°
 Mud Data at 4024
 11:40 am 2-13-12
 WI 9
 Vis 55
 WL 6.8
 pH 10.5
 Cht 4200



LS-AA sm Ls-lt brn/lt shly opac			
Sh-blk carb			Mud Data at 4024 11:40 am 2-13-12 WI 9 Vis 55 WL 6.8 pH 10.5 Chi 4200 Sol 4.8 YP 16 LCM 1#
Ls-crm f/mxn mhd sl fos no por			
Sh-gry/dk gry			
Ls-tan mxln mhd highly fos gd interfos por fr vug por gd cut scat brn sat sin fr odor gsfo			
Ls-crm/tan fxin dns sl fos no por			
-----B/Kansas City 4016 -1705-----			
Sh-gry/dk gry			CFS at 4042' - 60"
Ls-crm/tan/brn fxin dns no por			Pulled 15 stand Short Trip at 4024' then Cir for Test - 60"
Sh-gry/dk gry			Pipe Strap at 4024' Short - 2.1 feet long
Ls-crm/tan fxin dns no por			
Sh-gry/dk gry			
-----Marmaton 4054 -1743-----			
Ls-tan/brn fxin dns sl fos no por			
Ls-tan/brn/lt gry fxin mhd/dns sl fos no por			
Ls-AA			Mud Data at 4102' 7:30 am 2-14-12 WI 9.05 Vis 53 WL 6 pH 10.5 Chi 5300 Sol 5% YP 18 LCM 1#
Sh-gry/dk gry			
Ls-tan/brn/lt gry fxin mhd/dns no por			
-----Altamont 4088 -1777-----			
Ls-crm/tan fxin mhd no por sm Ls-tan fxin mhd fos ool no por			CFS at 4102' - 45"
Ls-AA			
Ls-crm/tan/lt gry fxin dns no por			
Ls-crm/lt gry fxin dns no por			
Ls-AA sm Ls-lt gry fxin mhd/dns chty no por trc Cht-org fish opac			
-----Pawnee 4126 -1815-----			
Ls-lt gry/gry fxin dns no por			CFS at 4130' - 45"
Ls-AA			
Ls-gry fxin dns no por			
Ls-AA			
Ls-AA			
Ls-gry/gry brn fxin mhd/dns no por			
Ls-AA			DST No. 2 4196 to 4240 30-60-60-90 1st Open: WSB inc to 1 3/4" 2nd Open: WSB inc to 2" Recovery 60' mud with a few oil spots and a gassy odor
Ls-gry/brn fxin dns sl shly no por			IHP 2024 FHP 2012 IFP 17-37 FFP 30-44 ISIP 2024 FSIP 2012 Temp 112°
Ls-AA			
Ls-AA			
Sh-blk carb			DST No. 3 4255 to 4312 30-75-30-90 1st Open: WSB inc to 1" 2nd Open: WSB inc to 1/2" died in 23" Recovery: 5' CO 35' MO (10%M, 90%O)
Ls-tan mxln mhd fos gr vug por brn sat stn gd cut gsfo faint odor			IHP 2055 FHP 2035 IFP 19-26 FFP 26-31 ISIP 1034 FSIP 1065 Temp 111°
Ls-tan fxin mhd sl fos dns no por			
Ls-tan f/mxn mhd sl fos gd vug por brn sat stn gd cut gsfo sl odor			
Ls-AA			
-----Cherokee Shale 4238 -1927-----			
Sh-blk carb			
Ls-lt gry/brn fxin dns no por			
Sh-gry/dk gry			
Ls-lt gry/brn fxin dns no por			
			CFS at 4240' - 60"
			Pulled 15 Stand Short Trip at 4240' then Cir for Test - 60"
			Mud Data at 4240'



Sh-blk carb

Ls-tan mxln mhd fos gr vug por brn sat stn gd cut gsfo faint odor

Ls-tan fxln mhd sl fos dns no por

Ls-tan f/mxln mhd sl fos gd vug por brn sat stn gd cut gsfo sl odor

Ls-AA

Sh-blk carb

Ls-llt gry/brn fxln dns no por

Sh-gry/dk gry

Ls-llt gry/crm fxln dns no por

Sh-gry/dk gry

Ls-llt gry fxln dns no por sm Cht-org fish trans

Sh-gry/grm/mar/sm yel

Ls-tan fxln dns no por

Sh-gry/grm/mar/yel sm Cht-org fish trans

Ss-clr cgrn ang tile cent highly gilis gsfo on brk gd odor

-----Mississippi 4300 -1989-----

Dolo-tan to sl lt grn fxln mhd chty gd vug por dk brn scat stn fsto on brk fr odor sm Ss-AA

Dolo-tan fxln mhd sl chty gd vug por brn scat stn gsfo strong odor

Dolo-tan fxln mhd sl chty gd vug por brn sat stn gsfo strong odor

Finished Drilling at 4:22 pm on 2-16-12. Coming out of hole for DST No. 4 at 5:30 pm on 2-16-12. Logged hole immediately after DST No. 4. Finished Logging at 2:35 am on 2-17-12.

30-75-30-90
1st Open: WSB inc to 1"
2nd Open: WSB inc to 1/2"
died in 23"
Recovery: 5' CO
35' MO (10%MO, 90%O)

IHP 2055 FHP 2035
IFP 19-26 FFP 26-31
ISIP 1034 FSIP 1065
Temp 111°

CFS at 4240' - 60"

Pulled 15 Stand Short Trip at 4240' then Cir for Test - 60"

Mud Data at 4240'
7:30 am 2-15-12
Wt 9.15
Vis 46
WL 6.4
pH 10.5
Chl 4800
Sol 5.9%
YP 14
LCM 1#

CFS at 4396' - 60"

CFS at 4304' - 75"

CFS at 4309' - 30"

CFS at 4312' - 60"

CFS at 4317' - 60"

DST No. 4 4257 to 4317
30-75-60-90
1st Open: GSB inc to 7"
2nd Open: GSB inc to 11.5"
Recovery: 55' CO
110' HOOC
(26%O, 72%M)

IHP 2056 FHP 2025
IFP 26-43 FFP 50-82
ISIP 1263 FSIP 1222
Temp 110°

Mud Data at 4312'
7:45 am 2-16-12
Wt 9.4
Vis 75
WL 6.4
pH 10.5
Chl 6500
Sol 7.4%
YP 30
LCM 1#