



Office
(920) 585-4250

James C. Musgrove
Petroleum Geologist
212 Main St. • P.O. Box 215 • Clarita, KS 67525

Home
(920) 587-3444

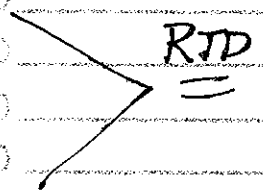
GEOLOGIST'S REPORT

DRILLING TIME AND SAMPLE LOG

COMPANY <u>Blue Ridge Petroleum</u>	ELEVATIONS
LEASE <u>Schwartz #1-30</u>	KB <u>2455</u>
FIELD <u>Wildcat</u>	DF <u>2453</u>
LOCATION <u>330' FSL 530' Fwh</u>	GI <u>2445</u>
SEC <u>30</u> TWP <u>18S</u> RGE <u>25W</u>	Measurements Are All From <u>-KB-</u>
COUNTY <u>NESS</u> STATE <u>Kansas</u>	CASING
CONTRACTOR <u>Southwind Drilling Co. (rig #1)</u>	SURFACE <u>8 5/8" 218'</u>
SPUD <u>2-8-2012</u> COMP <u>2-17-2012</u>	PRODUCTION <u>5 1/2" 44</u>
RTD <u>4475</u> LTD <u>4477</u>	ELECTRICAL SURVEYS
MUD UP <u>3600+</u> TYPE MUD <u>Chemical displaced</u>	By <u>Superior Well Services</u>

DIL. CPY. ONLY
MEL. SOME

SAMPLES SAVED FROM <u>3700</u>	TO
DRILLING TIME KEPT FROM <u>3700</u>	TO
SAMPLES EXAMINED FROM <u>3700</u>	TO
GEOLOGICAL SUPERVISION FROM <u>3800</u>	TO
GEOLOGIST ON WELL <u>Jim Musgrove</u>	

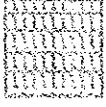
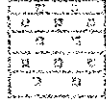
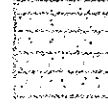
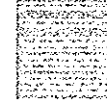

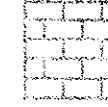
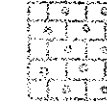
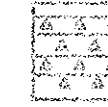
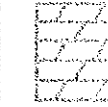


FORMATION TOPS	LOG	SAMPLES
anhydrite	1732 +723	Cherokee Sand 4374 - 1919
Base anhydrite	1765 +690	Mississippian 4390 - 1935
Heebner	3752 - 1297	RTD 4475 - 2020
Toronto	3771 - 1316	LTD 4477 - 2022
Wasing	3793 - 1338	
Stark sh.	4041 - 1586	
Base Kansas City	4123 - 1638	
Marmatin	4147 - 1692	
Pawnee	4231 - 1776	
FT. Scott	4299 - 1844	
Cherokee Shale	4324 - 1869	

5 1/2" production casing was set & cemented.
Respectfully submitted,

James C. Musgrave
Petrobeam
Geologist

LEGEND

- 
Anhydrite
- 
Salt
- 
Sandstone
- 
Shale
- 
Carbonaceous shale
- 
Limestone
- 
Dolomite
- 
Chert
- 
Dolomite

LITHOLOGY

DEPTH

DRILLING TIME
(Logarithmic Scale)

SAMPLE DESCRIPTIONS

REMARKS

0 1 2 3 4 5 10 15 20 30

20

40

60

80

3800

Heebner
3753
(-1298)

Toronto
3770

Lansing
3793
(-1338)

ls, wh/gry, green, cherty,
silt. sh. n/s

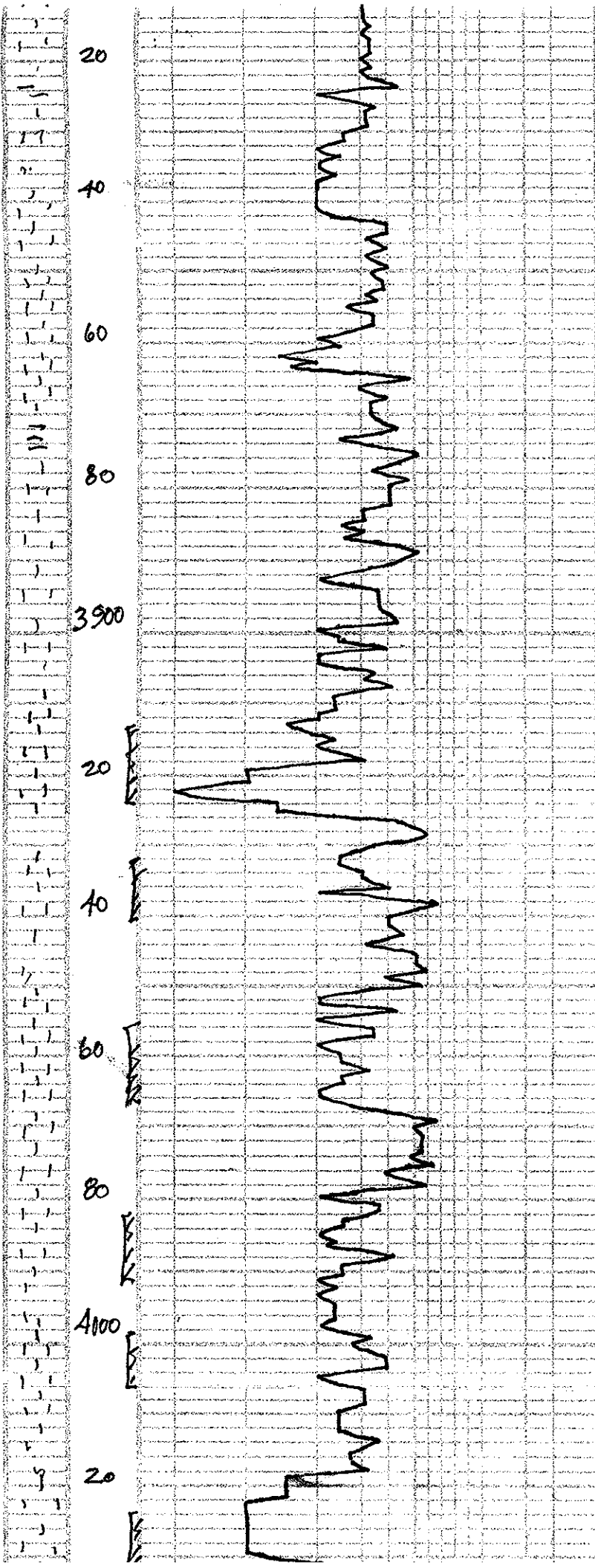
arg. Jr. wh. A

blk. Carb. Sh.

ls, wh/gry, fess in
part, green,
cherty, Jr. wh. A

Lib. and wh. Crk.

2455 KB-



Spangy' calcite cement

~ gray/green sh
+ wh Δ
ls, gray, wh, foss, cherty;
sls

} 2

ls, gray, tan, fxl, highly ool,
fro, ? in sh, nsgo, no ool

~ gray/green sh.

ls, gray, wh, fxl, foss,
cherty m/s

~ ls, wh, gray, finely ool, ool,
fro, f wh/gray bone Δ

} 2

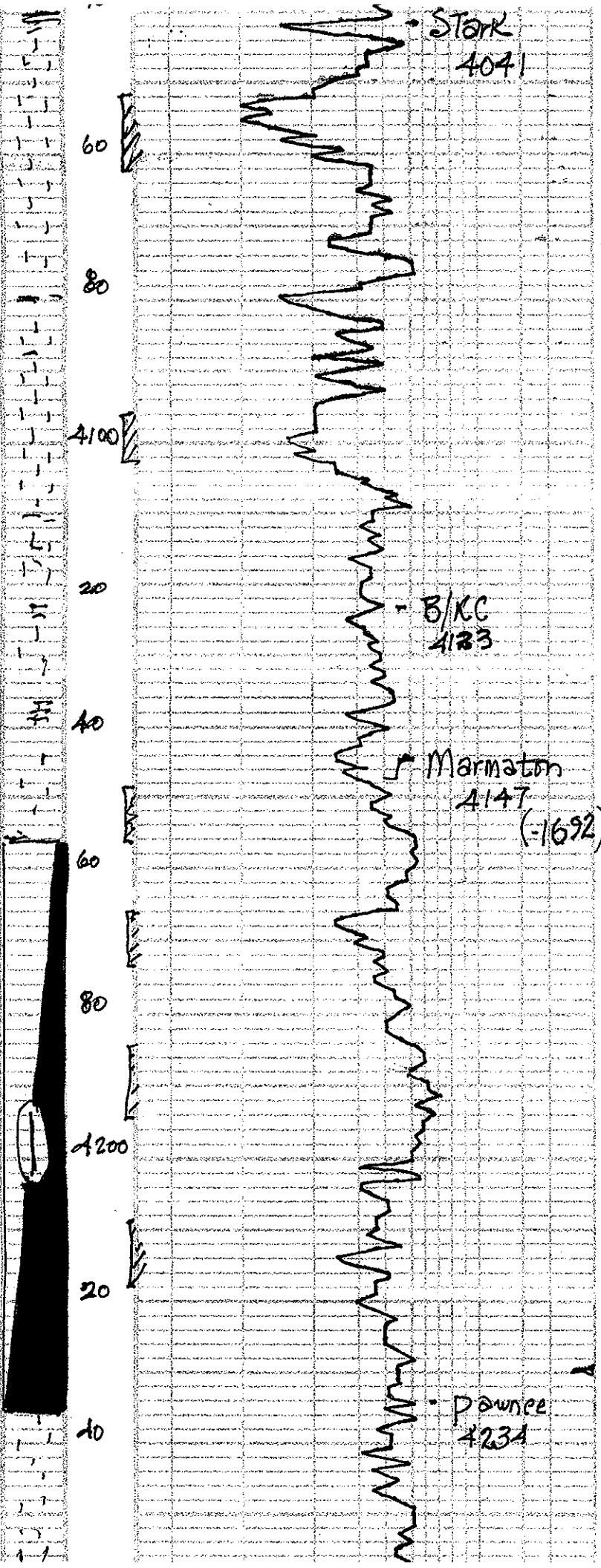
ls, tan, foss, dense

ls, tan, highly ool, cherty,
scat o-s

} 2

ls, tan, ool, dense

ls, gray, wh, ool, fr. ool,
(barren) + wh chert



~ blk carb sh.
 ~ ls, crm/wh, ool, oom fr. oom
 chiky sh

32

~ ls, crm (oas/oom), scatt o
 ml

~ Jr. gry / blk sh

~ ls, wh / gry - chiky

~ gry / green red sh

~ ls, wh / gry - chiky - poor g

~ ls, crm, chiky, poor vis g
 ev - poor str, Jr. fo, no odor.

33

~ ls, gry, wh, finely ool, chiky,
 gry - blk str, no odor

+ Jr. tan, finely ool, ls, scatt g
 brown golden brown str, sfo,

~ blk carb sh.

~ ls, tan, brown, fxt, slight g
 Any (dense)

37

Dst # | 4157-42
 30-30-45-60
 Blow; fan (9")
 2nd opening; fan (7")
 Rec; 180' gas in g
 30' very slightly
 cut mud
 (3700 lb) 97% muc
 pressures) Isip 85
 Jsi p 109
 Ifp 26-8
 SFP 27-3
 H&M

