



DRILL STEM TEST REPORT

Prepared For: **Blue Ridge Petroleum Corp**

PO Box 1913
Enid OK 73702-1913

ATTN: Jim Musgrove

Schwartz #1-30

30-18s-25w Ness,KS

Start Date: 2012.02.15 @ 04:16:00

End Date: 2012.02.15 @ 11:35:00

Job Ticket #: 46395 DST #: 1

Trilobite Testing, Inc

PO Box 362 Hays, KS 67601

ph: 785-625-4778 fax: 785-625-5620

Printed: 2012.02.20 @ 15:24:37



**TRILOBITE
TESTING, INC**

DRILL STEM TEST REPORT

Blue Ridge Petroleum Corp

30-18s-25w Ness,KS

PO Box 1913
Enid OK 73702-1913

Schwartz #1-30

Job Ticket: 46395

DST#: 1

ATTN: Jim Musgrove

Test Start: 2012.02.15 @ 04:16:00

GENERAL INFORMATION:

Formation: **Marmaton**

Deviated: No Whipstock: ft (KB)

Time Tool Opened: 06:28:30

Time Test Ended: 11:35:00

Test Type: Conventional Bottom Hole (Initial)

Tester: Jeff Brown

Unit No: 44

Interval: 4157.00 ft (KB) To 4235.00 ft (KB) (TVD)

Reference Elevations: 2455.00 ft (KB)

Total Depth: 4235.00 ft (KB) (TVD)

2445.00 ft (CF)

Hole Diameter: 7.88 inches Hole Condition: Good

KB to GR/CF: 10.00 ft

Serial #: 8321 Inside

Press @ Run Depth: 33.57 psig @ 4164.00 ft (KB)

Capacity: 8000.00 psig

Start Date: 2012.02.15

End Date:

2012.02.15

Last Calib.:

2012.02.15

Start Time: 04:16:01

End Time:

11:35:00

Time On Btm:

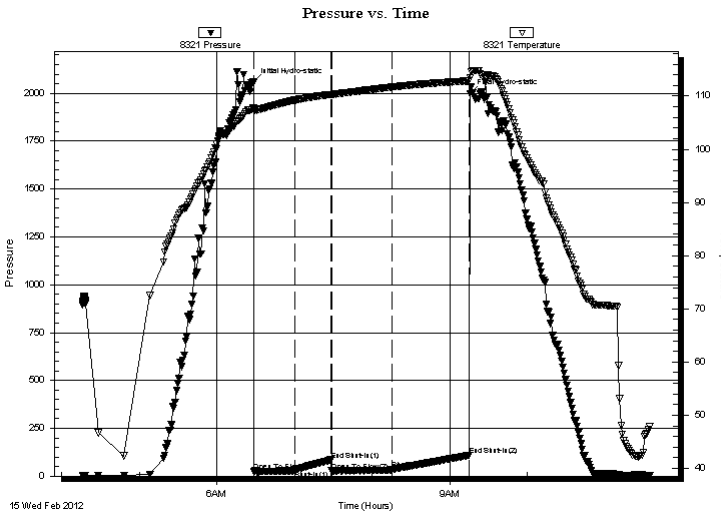
2012.02.15 @ 06:28:00

Time Off Btm:

2012.02.15 @ 09:15:30

TEST COMMENT: IFP-Fair blow built to 9 in
ISI-Dead no blow back
FFP-Fair blow built to 7 in
FSI-Dead no blow back

PRESSURE SUMMARY



Time (Min.)	Pressure (psig)	Temp (deg F)	Annotation
0	2058.40	107.71	Initial Hydro-static
1	26.14	107.35	Open To Flow (1)
32	31.00	109.21	Shut-In(1)
60	85.20	110.29	End Shut-In(1)
61	27.22	110.28	Open To Flow (2)
107	33.57	111.67	Shut-In(2)
167	109.40	112.86	End Shut-In(2)
168	1996.72	113.35	Final Hydro-static

Recovery

Length (ft)	Description	Volume (bbl)
30.00	V/SOCM 3%O97%M	0.42

Gas Rates

	Choke (inches)	Pressure (psig)	Gas Rate (Mcf/d)



**TRILOBITE
TESTING, INC**

DRILL STEM TEST REPORT

TOOL DIAGRAM

Blue Ridge Petroleum Corp

30-18s-25w Ness,KS

PO Box 1913
Enid OK 73702-1913

Schwartz #1-30

Job Ticket: 46395

DST#: 1

ATTN: Jim Musgrove

Test Start: 2012.02.15 @ 04:16:00

Tool Information

Drill Pipe:	Length: 4147.00 ft	Diameter: 3.80 inches	Volume: 58.17 bbl	Tool Weight:	2000.00 lb
Heavy Wt. Pipe:	Length: 0.00 ft	Diameter: 2.70 inches	Volume: 0.00 bbl	Weight set on Packer:	20000.00 lb
Drill Collar:	Length: 0.00 ft	Diameter: 2.25 inches	Volume: 0.00 bbl	Weight to Pull Loose:	56000.00 lb
			<u>Total Volume: 58.17 bbl</u>	Tool Chased	0.00 ft
Drill Pipe Above KB:	10.00 ft			String Weight: Initial	44000.00 lb
Depth to Top Packer:	4157.00 ft			Final	44000.00 lb
Depth to Bottom Packer:	ft				
Interval between Packers:	78.00 ft				
Tool Length:	98.00 ft				
Number of Packers:	2	Diameter: 6.75 inches			

Tool Comments:

Tool Description

Tool Description	Length (ft)	Serial No.	Position	Depth (ft)	Accum. Lengths
Change Over Sub	1.00			4138.00	
Shut In Tool	5.00			4143.00	
Hydraulic tool	5.00			4148.00	
Packer	4.00			4152.00	20.00 Bottom Of Top Packer
Packer	5.00			4157.00	
Stubb	1.00			4158.00	
Perforations	5.00			4163.00	
Change Over Sub	1.00			4164.00	
Recorder	0.00	8321	Inside	4164.00	
Recorder	0.00	8737	Outside	4164.00	
Drill Pipe	63.00			4227.00	
Change Over Sub	1.00			4228.00	
Perforations	4.00			4232.00	
Bullnose	3.00			4235.00	78.00 Bottom Packers & Anchor

Total Tool Length: 98.00



**TRILOBITE
TESTING, INC**

DRILL STEM TEST REPORT

FLUID SUMMARY

Blue Ridge Petroleum Corp

30-18s-25w Ness, KS

PO Box 1913
Enid OK 73702-1913

Schwartz #1-30

Job Ticket: 46395

DST#: 1

ATTN: Jim Musgrove

Test Start: 2012.02.15 @ 04:16:00

Mud and Cushion Information

Mud Type: Gel Chem

Cushion Type:

Oil API:

deg API

Mud Weight: 9.00 lb/gal

Cushion Length:

ft

Water Salinity:

ppm

Viscosity: 58.00 sec/qt

Cushion Volume:

bbbl

Water Loss: 5.98 in³

Gas Cushion Type:

Resistivity: ohm.m

Gas Cushion Pressure:

psig

Salinity: 3500.00 ppm

Filter Cake: inches

Recovery Information

Recovery Table

Length ft	Description	Volume bbl
30.00	VSOCM 3%O97%M	0.421

Total Length: 30.00 ft Total Volume: 0.421 bbl

Num Fluid Samples: 0

Num Gas Bombs: 0

Serial #:

Laboratory Name:

Laboratory Location:

Recovery Comments:

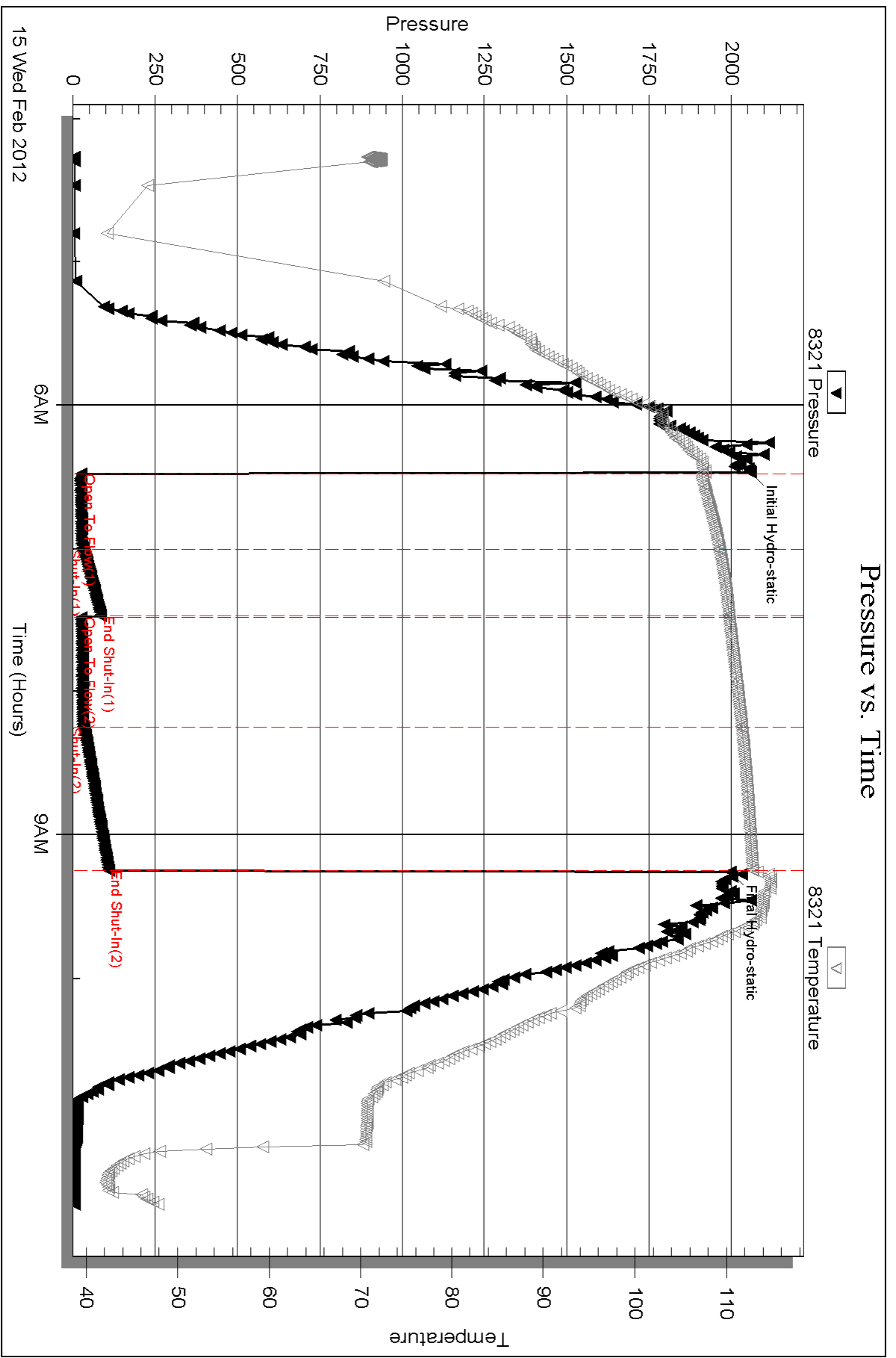
Serial #: 8321

Inside

Blue Ridge Petroleum Corp

Schwartz #1-30

DST Test Number: 1



Triobite Testing, Inc

Ref. No: 46395

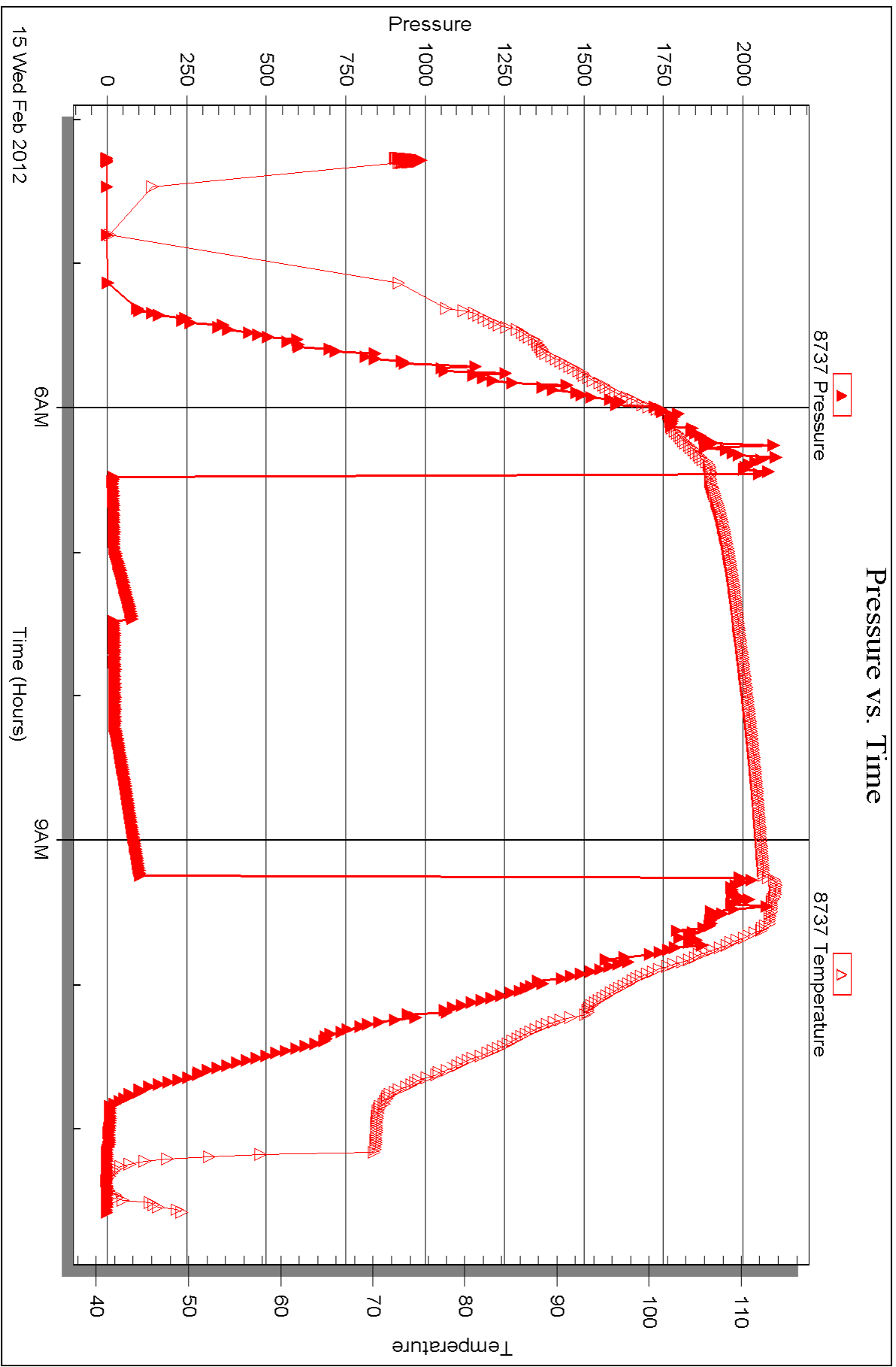
Printed: 2012.02.20 @ 15:24:39

Serial #: 8737

Outside Blue Ridge Petroleum Corp

Schwartz #1-30

DST Test Number: 1





DRILL STEM TEST REPORT

Prepared For: **Blue Ridge Petroleum Corp**

PO Box 1913
Enid OK 73702-1913

ATTN: Jim Musgrove

Schwartz #1-30

30-18s-25w Ness,KS

Start Date: 2012.02.16 @ 00:32:00

End Date: 2012.02.16 @ 07:27:30

Job Ticket #: 46283 DST #: 2

Trilobite Testing, Inc

PO Box 362 Hays, KS 67601

ph: 785-625-4778 fax: 785-625-5620

Printed: 2012.02.20 @ 15:23:47



TRILOBITE TESTING, INC

DRILL STEM TEST REPORT

Blue Ridge Petroleum Corp

30-18s-25w Ness, KS

PO Box 1913
Enid OK 73702-1913

Schwartz #1-30

Job Ticket: 46283

DST#: 2

ATTN: Jim Musgrove

Test Start: 2012.02.16 @ 00:32:00

GENERAL INFORMATION:

Formation: **Ft. Scott**

Deviated: No Whipstock: ft (KB)

Time Tool Opened: 02:50:30

Time Test Ended: 07:27:30

Test Type: Conventional Bottom Hole (Reset)

Tester: Cody Bloedorn

Unit No: 44

Interval: 4278.00 ft (KB) To 4330.00 ft (KB) (TVD)

Reference Elevations: 2455.00 ft (KB)

Total Depth: 4330.00 ft (KB) (TVD)

2445.00 ft (CF)

Hole Diameter: 7.88 inches Hole Condition: Fair

KB to GR/CF: 10.00 ft

Serial #: 8737 Outside

Press @ Run Depth: 41.66 psig @ 4285.00 ft (KB)

Capacity: 8000.00 psig

Start Date: 2012.02.16

End Date: 2012.02.16

Last Calib.: 2012.02.16

Start Time: 00:32:01

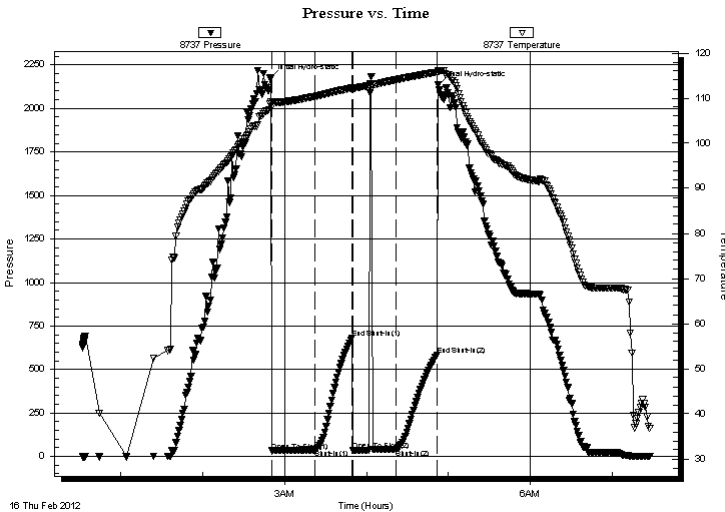
End Time: 07:27:30

Time On Btm: 2012.02.16 @ 02:50:00

Time Off Btm: 2012.02.16 @ 04:52:30

TEST COMMENT: 30 - IF- 1 1/2" Blow , dying.
30 - IS- No blow back.
30 - FF- No blow for 10 Min. flushed tool, surged, no blow back
30 - FSI- No blow back

PRESSURE SUMMARY



Time (Min.)	Pressure (psig)	Temp (deg F)	Annotation
0	2174.70	109.11	Initial Hydro-static
1	32.20	108.00	Open To Flow (1)
32	38.76	110.37	Shut-In(1)
60	681.92	112.26	End Shut-In(1)
60	37.29	112.08	Open To Flow (2)
92	41.66	114.05	Shut-In(2)
122	582.03	115.73	End Shut-In(2)
123	2134.06	116.00	Final Hydro-static

Recovery

Length (ft)	Description	Volume (bbl)
8.00	Mud, with oil scum. 100%Mud	0.11

* Recovery from multiple tests

Gas Rates

Choke (inches)	Pressure (psig)	Gas Rate (Mcf/d)



**TRILOBITE
TESTING, INC**

DRILL STEM TEST REPORT

TOOL DIAGRAM

Blue Ridge Petroleum Corp

30-18s-25w Ness,KS

PO Box 1913
Enid OK 73702-1913

Schwartz #1-30

Job Ticket: 46283

DST#: 2

ATTN: Jim Musgrove

Test Start: 2012.02.16 @ 00:32:00

Tool Information

Drill Pipe:	Length: 4271.00 ft	Diameter: 3.80 inches	Volume: 59.91 bbl	Tool Weight:	2000.00 lb
Heavy Wt. Pipe:	Length: 0.00 ft	Diameter: 2.70 inches	Volume: 0.00 bbl	Weight set on Packer:	25000.00 lb
Drill Collar:	Length: 0.00 ft	Diameter: 2.25 inches	Volume: 0.00 bbl	Weight to Pull Loose:	49000.00 lb
			<u>Total Volume: 59.91 bbl</u>	Tool Chased	0.00 ft
Drill Pipe Above KB:	13.00 ft			String Weight: Initial	45000.00 lb
Depth to Top Packer:	4278.00 ft			Final	45000.00 lb
Depth to Bottom Packer:	ft				
Interval between Packers:	52.00 ft				
Tool Length:	72.00 ft				
Number of Packers:	2	Diameter: 6.75 inches			

Tool Comments:

Tool Description

Tool Description	Length (ft)	Serial No.	Position	Depth (ft)	Accum. Lengths
Change Over Sub	1.00			4259.00	
Shut In Tool	5.00			4264.00	
Hydraulic tool	5.00			4269.00	
Packer	4.00			4273.00	20.00 Bottom Of Top Packer
Packer	5.00			4278.00	
Stubb	1.00			4279.00	
Perforations	5.00			4284.00	
Change Over Sub	1.00			4285.00	
Recorder	0.00	8321	Inside	4285.00	
Recorder	0.00	8737	Outside	4285.00	
Drill Pipe	31.00			4316.00	
Change Over Sub	1.00			4317.00	
Perforations	10.00			4327.00	
Bullnose	3.00			4330.00	52.00 Bottom Packers & Anchor

Total Tool Length: 72.00



**TRILOBITE
TESTING, INC**

DRILL STEM TEST REPORT

FLUID SUMMARY

Blue Ridge Petroleum Corp

30-18s-25w Ness,KS

PO Box 1913
Enid OK 73702-1913

Schwartz #1-30

Job Ticket: 46283

DST#: 2

ATTN: Jim Musgrove

Test Start: 2012.02.16 @ 00:32:00

Mud and Cushion Information

Mud Type: Gel Chem

Cushion Type:

Oil API:

deg API

Mud Weight: 9.00 lb/gal

Cushion Length:

ft

Water Salinity:

ppm

Viscosity: 49.00 sec/qt

Cushion Volume:

bbbl

Water Loss: 5.58 in³

Gas Cushion Type:

Resistivity: ohm.m

Gas Cushion Pressure:

psig

Salinity: 3200.00 ppm

Filter Cake: inches

Recovery Information

Recovery Table

Length ft	Description	Volume bbl
8.00	Mud, with oil scum. 100%Mud	0.112

Total Length: 8.00 ft Total Volume: 0.112 bbl

Num Fluid Samples: 0

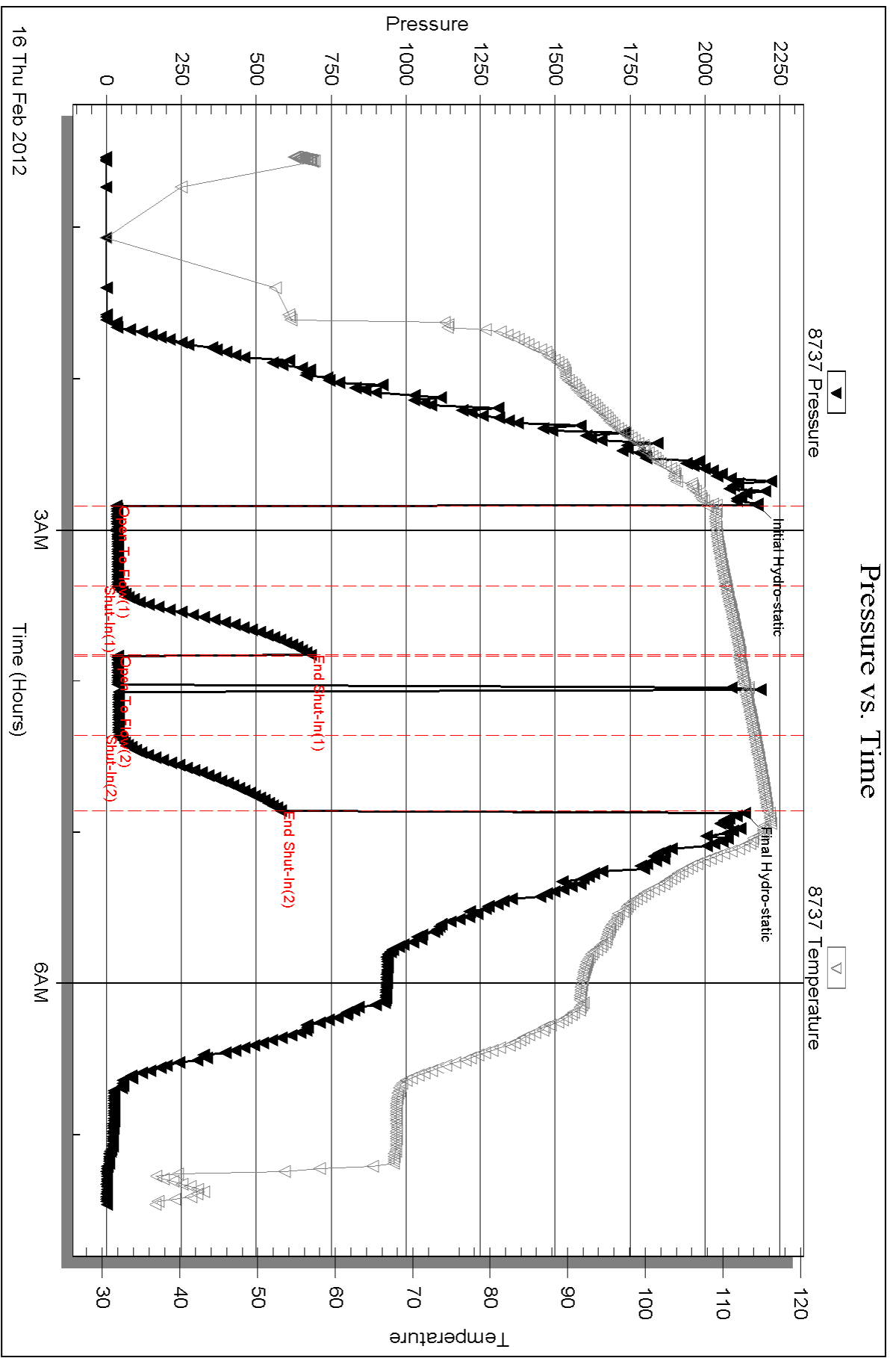
Num Gas Bombs: 0

Serial #:

Laboratory Name:

Laboratory Location:

Recovery Comments:



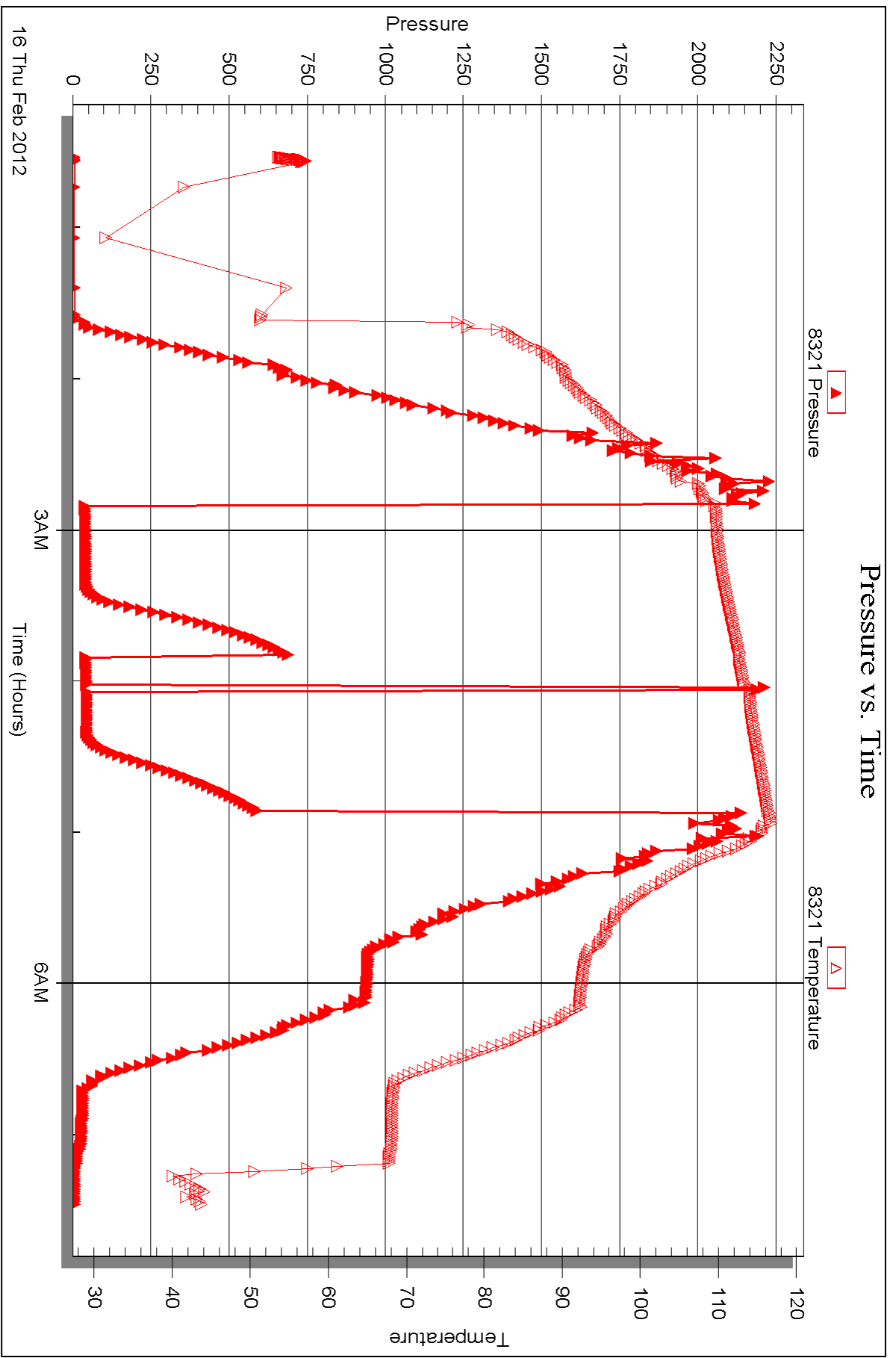
Serial #: 8321

Inside

Blue Ridge Petroleum Corp

Schwartz #1-30

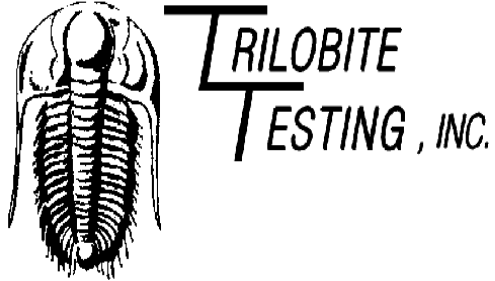
DST Test Number: 2



Triobite Testing, Inc

Ref. No: 46283

Printed: 2012.02.20 @ 15:23:49



DRILL STEM TEST REPORT

Prepared For: **Blue Ridge Petroleum Corp**

PO Box 1913
Enid OK 73702-1913

ATTN: Jim Musgrove

Schwartz #1-30

30-18s-25w Ness,KS

Start Date: 2012.02.16 @ 16:32:00

End Date: 2012.02.16 @ 22:18:30

Job Ticket #: 46284 DST #: 3

Trilobite Testing, Inc

PO Box 362 Hays, KS 67601

ph: 785-625-4778 fax: 785-625-5620

Printed: 2012.02.20 @ 15:23:08



TRILOBITE TESTING, INC

DRILL STEM TEST REPORT

Blue Ridge Petroleum Corp

30-18s-25w Ness, KS

PO Box 1913
Enid OK 73702-1913

Schwartz #1-30

Job Ticket: 46284

DST#: 3

ATTN: Jim Musgrove

Test Start: 2012.02.16 @ 16:32:00

GENERAL INFORMATION:

Formation: **Cherokee**

Deviated: No Whipstock: ft (KB)

Time Tool Opened: 18:13:30

Time Test Ended: 22:18:30

Test Type: Conventional Bottom Hole (Reset)

Tester: Cody Bloedorn

Unit No: 44

Interval: 4441.00 ft (KB) To 4492.00 ft (KB) (TVD)

Reference Elevations: 2455.00 ft (KB)

Total Depth: 4492.00 ft (KB) (TVD)

2445.00 ft (CF)

Hole Diameter: 7.88 inches Hole Condition: Good

KB to GR/CF: 10.00 ft

Serial #: 8737 Outside

Press @ Run Depth: 43.17 psig @ 4447.00 ft (KB)

Capacity: 8000.00 psig

Start Date: 2012.02.16

End Date: 2012.02.16

Last Calib.: 2012.02.16

Start Time: 16:32:01

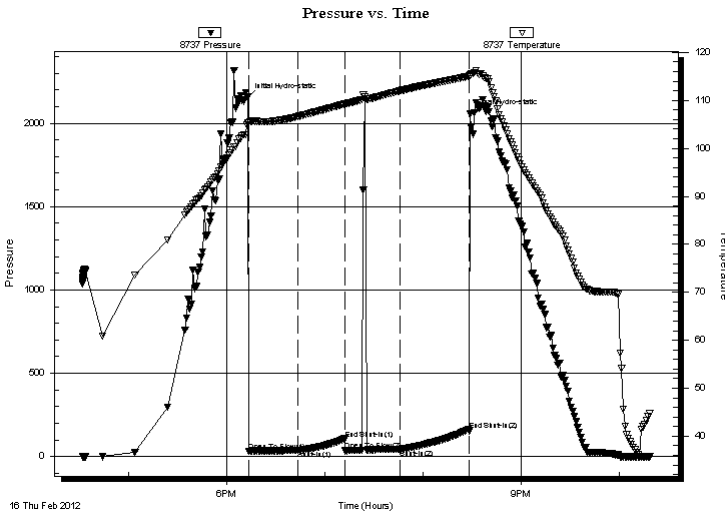
End Time: 22:18:30

Time On Btm: 2012.02.16 @ 18:13:00

Time Off Btm: 2012.02.16 @ 20:29:00

TEST COMMENT: 30 - IFP - 2 1/4" Blow
30 - ISI - No blow back
45 - FFP - No blow back, flushed tool @ 10 Min. Surged, no blow back
60 - FSI - No blow back.

PRESSURE SUMMARY



Time (Min.)	Pressure (psig)	Temp (deg F)	Annotation
0	2156.28	105.38	Initial Hydro-static
1	32.83	105.28	Open To Flow (1)
31	36.54	106.63	Shut-In(1)
59	106.40	109.22	End Shut-In(1)
60	36.13	109.23	Open To Flow (2)
93	43.17	111.98	Shut-In(2)
136	156.28	115.04	End Shut-In(2)
136	2057.79	115.40	Final Hydro-static

Recovery

Length (ft)	Description	Volume (bbl)
5.00	FREE OIL, 100%O	0.07
20.00	OCM, 20%O, 80%M	0.28

* Recovery from multiple tests

Gas Rates

Choke (inches)	Pressure (psig)	Gas Rate (Mcf/d)



**TRILOBITE
TESTING, INC**

DRILL STEM TEST REPORT

TOOL DIAGRAM

Blue Ridge Petroleum Corp

30-18s-25w Ness,KS

PO Box 1913
Enid OK 73702-1913

Schwartz #1-30

Job Ticket: 46284

DST#: 3

ATTN: Jim Musgrove

Test Start: 2012.02.16 @ 16:32:00

Tool Information

Drill Pipe:	Length: 4436.00 ft	Diameter: 3.80 inches	Volume: 62.23 bbl	Tool Weight:	2000.00 lb	
Heavy Wt. Pipe:	Length: 0.00 ft	Diameter: 2.70 inches	Volume: 0.00 bbl	Weight set on Packer:	25000.00 lb	
Drill Collar:	Length: 0.00 ft	Diameter: 2.25 inches	Volume: 0.00 bbl	Weight to Pull Loose:	49000.00 lb	
			<u>Total Volume:</u>	62.23 bbl	Tool Chased	0.00 ft
Drill Pipe Above KB:	15.00 ft			String Weight: Initial	45000.00 lb	
Depth to Top Packer:	4441.00 ft			Final	45000.00 lb	
Depth to Bottom Packer:	ft					
Interval between Packers:	51.00 ft					
Tool Length:	71.00 ft					
Number of Packers:	2	Diameter:	6.75 inches			
Tool Comments:						

Tool Description

Tool Description	Length (ft)	Serial No.	Position	Depth (ft)	Accum. Lengths
Change Over Sub	1.00			4422.00	
Shut In Tool	5.00			4427.00	
Hydraulic tool	5.00			4432.00	
Packer	4.00			4436.00	20.00 Bottom Of Top Packer
Packer	5.00			4441.00	
Stubb	1.00			4442.00	
Perforations	4.00			4446.00	
Change Over Sub	1.00			4447.00	
Recorder	0.00	8321	Inside	4447.00	
Recorder	0.00	8737	Outside	4447.00	
Drill Pipe	31.00			4478.00	
Change Over Sub	1.00			4479.00	
Perforations	10.00			4489.00	
Bullnose	3.00			4492.00	51.00 Bottom Packers & Anchor

Total Tool Length: 71.00



**TRILOBITE
TESTING, INC**

DRILL STEM TEST REPORT

FLUID SUMMARY

Blue Ridge Petroleum Corp

30-18s-25w Ness,KS

PO Box 1913
Enid OK 73702-1913

Schwartz #1-30

Job Ticket: 46284

DST#: 3

ATTN: Jim Musgrove

Test Start: 2012.02.16 @ 16:32:00

Mud and Cushion Information

Mud Type: Gel Chem

Cushion Type:

Oil API:

deg API

Mud Weight: 10.00 lb/gal

Cushion Length:

ft

Water Salinity:

ppm

Viscosity: 66.00 sec/qt

Cushion Volume:

bbbl

Water Loss: 7.59 in³

Gas Cushion Type:

Resistivity: ohm.m

Gas Cushion Pressure:

psig

Salinity: 3500.00 ppm

Filter Cake: inches

Recovery Information

Recovery Table

Length ft	Description	Volume bbbl
5.00	FREE OIL, 100%O	0.070
20.00	OCM, 20%O, 80%M	0.281

Total Length: 25.00 ft Total Volume: 0.351 bbl

Num Fluid Samples: 0

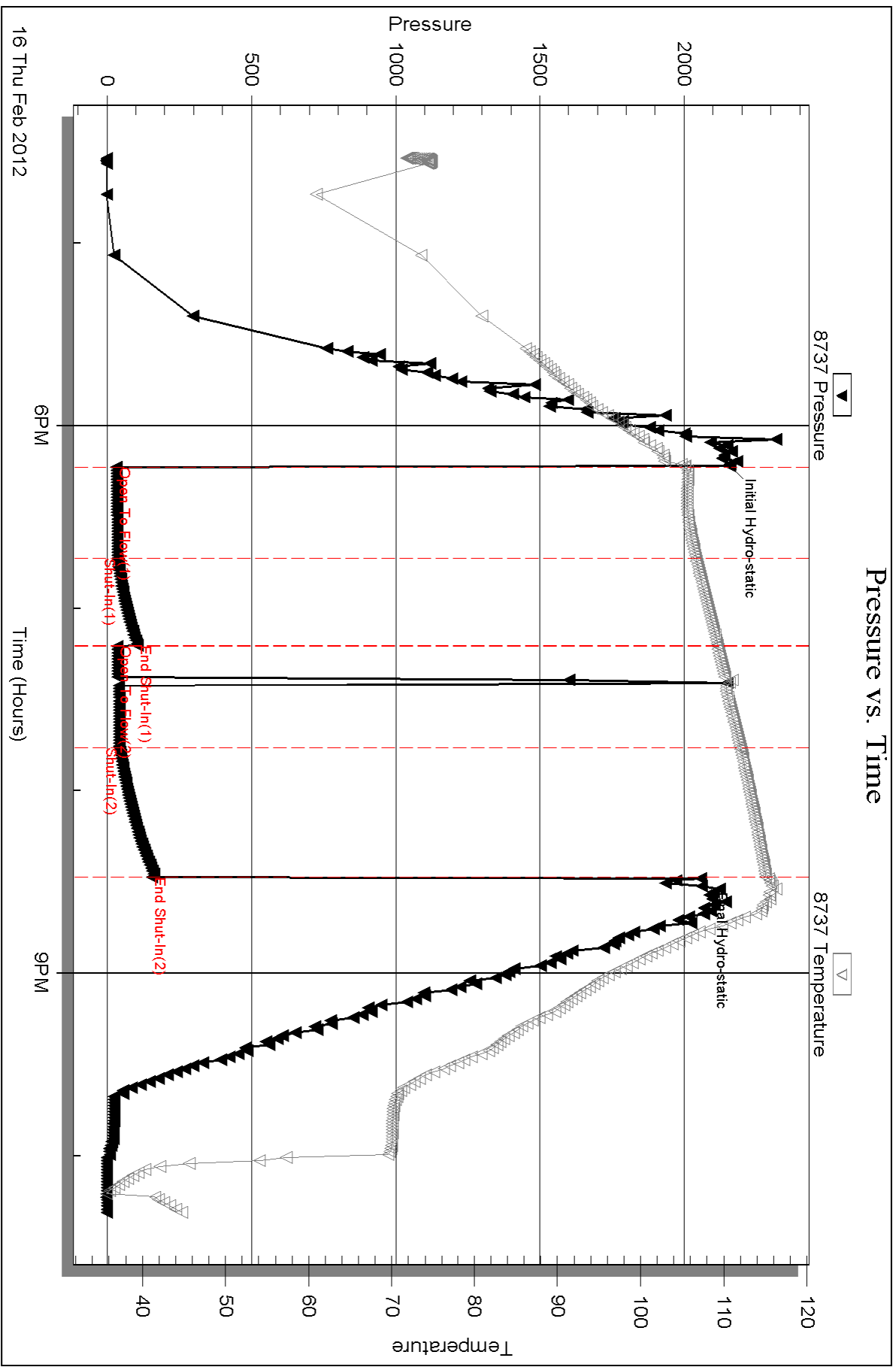
Num Gas Bombs: 0

Serial #:

Laboratory Name:

Laboratory Location:

Recovery Comments:



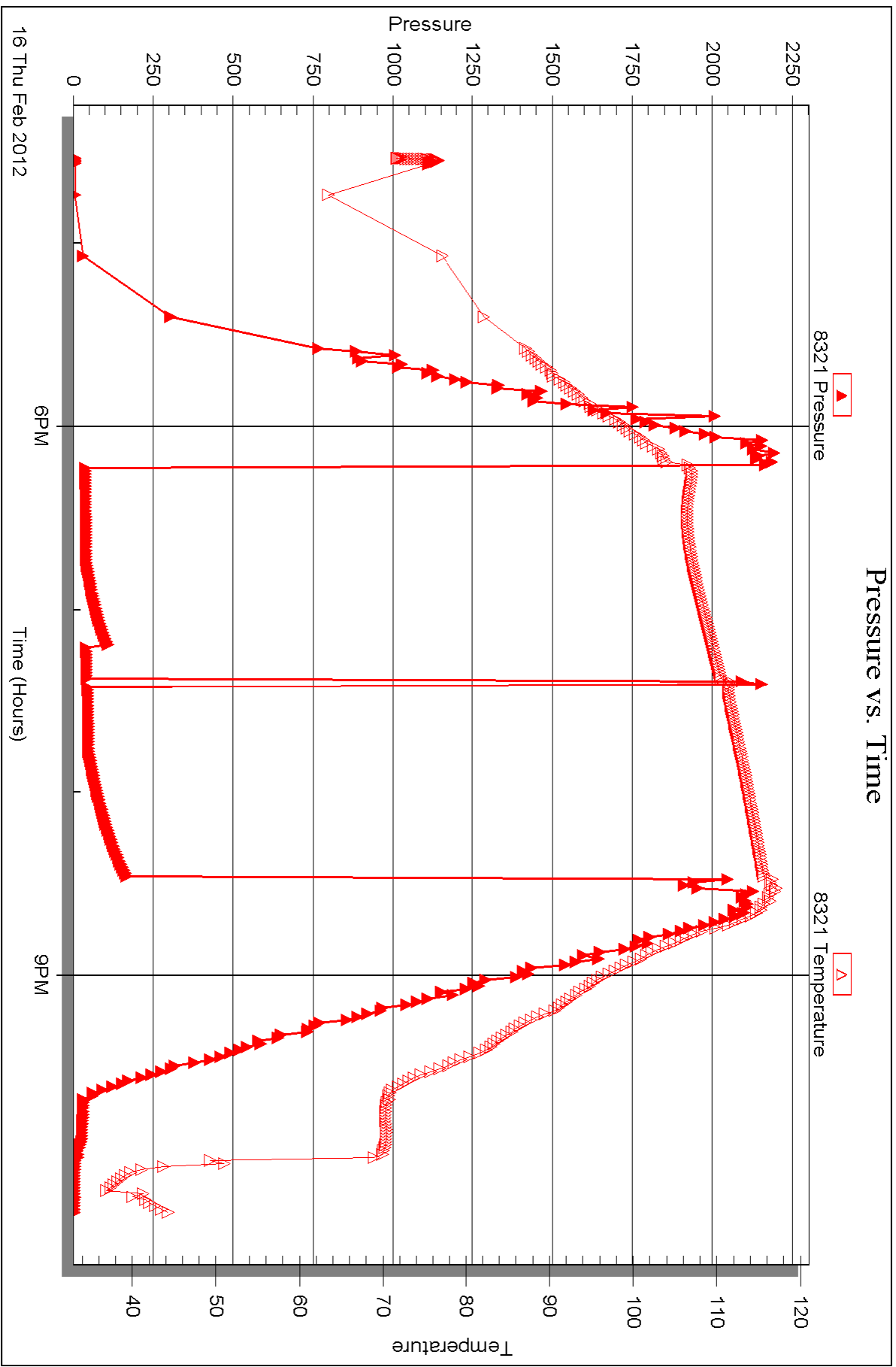
Serial #: 8321

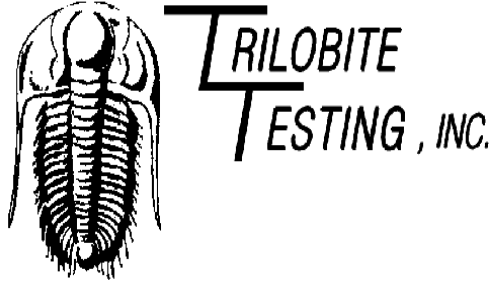
Inside

Blue Ridge Petroleum Corp

Schwartz #1-30

DST Test Number: 3





DRILL STEM TEST REPORT

Prepared For: **Blue Ridge Petroleum Corp**

PO Box 1913
Enid OK 73702-1913

ATTN: Jim Musgrove

Schwartz #1-30

30-18s-25w Ness,KS

Start Date: 2012.02.17 @ 05:01:00

End Date: 2012.02.17 @ 13:17:30

Job Ticket #: 46285 DST #: 4

Trilobite Testing, Inc

PO Box 362 Hays, KS 67601

ph: 785-625-4778 fax: 785-625-5620

Printed: 2012.02.20 @ 15:22:17



TRILOBITE TESTING, INC

DRILL STEM TEST REPORT

Blue Ridge Petroleum Corp

30-18s-25w Ness,KS

PO Box 1913
Enid OK 73702-1913

Schwartz #1-30

Job Ticket: 46285

DST#: 4

ATTN: Jim Musgrove

Test Start: 2012.02.17 @ 05:01:00

GENERAL INFORMATION:

Formation: **Mississippi**

Deviated: No Whipstock: ft (KB)

Time Tool Opened: 07:34:30

Time Test Ended: 13:17:30

Test Type: Conventional Bottom Hole (Reset)

Tester: Cody Bloedorn

Unit No: 44

Interval: 4392.00 ft (KB) To 4402.00 ft (KB) (TVD)

Reference Elevations: 2455.00 ft (KB)

Total Depth: 4402.00 ft (KB) (TVD)

2445.00 ft (CF)

Hole Diameter: 7.88 inches Hole Condition: Fair

KB to GR/CF: 10.00 ft

Serial #: 8737 Outside

Press @ Run Depth: 152.06 psig @ 4399.00 ft (KB)

Capacity: 8000.00 psig

Start Date: 2012.02.17

End Date:

2012.02.17

Last Calib.:

2012.02.17

Start Time:

05:01:01

End Time:

13:17:30

Time On Btm:

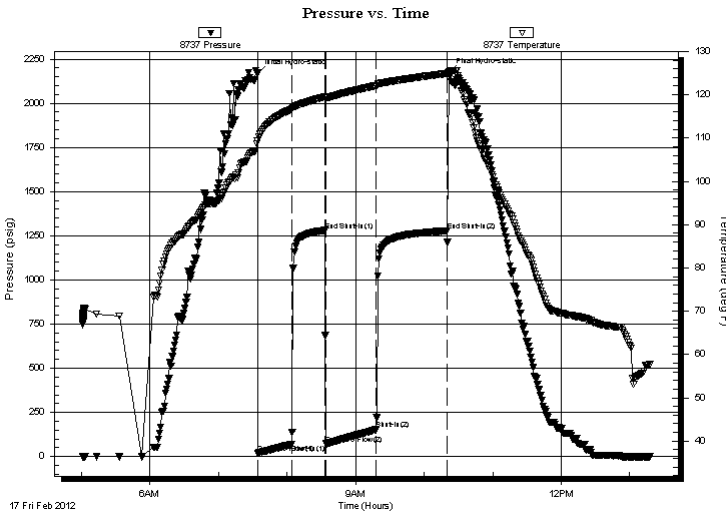
2012.02.17 @ 07:34:00

Time Off Btm:

2012.02.17 @ 10:21:30

TEST COMMENT: 30 - IF- B.O.B. in 12 Min.
30 - IS- 2" blow back
45 - FF- B.O.B. in 10 Min.
60 - FS- 1 1/2" blow back, died in 28 Min.

PRESSURE SUMMARY



Time (Min.)	Pressure (psig)	Temp (deg F)	Annotation
0	2170.59	109.41	Initial Hydro-static
1	18.98	109.48	Open To Flow (1)
30	69.26	116.66	Shut-In(1)
59	1280.38	119.53	End Shut-In(1)
60	72.28	119.31	Open To Flow (2)
104	152.06	122.11	Shut-In(2)
166	1278.18	124.91	End Shut-In(2)
168	2171.64	124.80	Final Hydro-static

Recovery

Length (ft)	Description	Volume (bbl)
62.00	GHOCM, 20%G, 30%O, 50%M	0.87
248.00	GMO, 20%G, 80%O	3.48
124.00	GMO, 10%G, 90%O	1.74
0.00	248' of G.I.P.	0.00

Gas Rates

	Choke (inches)	Pressure (psig)	Gas Rate (Mcf/d)

* Recovery from multiple tests



TRILOBITE
TESTING, INC

DRILL STEM TEST REPORT

TOOL DIAGRAM

Blue Ridge Petroleum Corp

30-18s-25w Ness,KS

PO Box 1913
Enid OK 73702-1913

Schwartz #1-30

Job Ticket: 46285

DST#: 4

ATTN: Jim Musgrove

Test Start: 2012.02.17 @ 05:01:00

Tool Information

Drill Pipe:	Length: 4398.00 ft	Diameter: 3.80 inches	Volume: 61.69 bbl	Tool Weight:	2000.00 lb
Heavy Wt. Pipe:	Length: 0.00 ft	Diameter: 2.70 inches	Volume: 0.00 bbl	Weight set on Packer:	25000.00 lb
Drill Collar:	Length: 0.00 ft	Diameter: 2.25 inches	Volume: 0.00 bbl	Weight to Pull Loose:	50000.00 lb
			<u>Total Volume: 61.69 bbl</u>	Tool Chased	0.00 ft
Drill Pipe Above KB:	26.00 ft			String Weight: Initial	45000.00 lb
Depth to Top Packer:	4392.00 ft			Final	46000.00 lb
Depth to Bottom Packer:	ft				
Interval between Packers:	10.00 ft				
Tool Length:	30.00 ft				
Number of Packers:	2	Diameter: 6.75 inches			
Tool Comments:					

Tool Description	Length (ft)	Serial No.	Position	Depth (ft)	Accum. Lengths
------------------	-------------	------------	----------	------------	----------------

Change Over Sub	1.00			4373.00	
Shut In Tool	5.00			4378.00	
Hydraulic tool	5.00			4383.00	
Packer	4.00			4387.00	20.00 Bottom Of Top Packer
Packer	5.00			4392.00	
Stubb	1.00			4393.00	
Perforations	6.00			4399.00	
Recorder	0.00	8321	Inside	4399.00	
Recorder	0.00	8737	Outside	4399.00	
Bullnose	3.00			4402.00	10.00 Bottom Packers & Anchor
Total Tool Length:	30.00				



**TRILOBITE
TESTING, INC**

DRILL STEM TEST REPORT

FLUID SUMMARY

Blue Ridge Petroleum Corp

30-18s-25w Ness,KS

PO Box 1913
Enid OK 73702-1913

Schwartz #1-30

Job Ticket: 46285

DST#: 4

ATTN: Jim Musgrove

Test Start: 2012.02.17 @ 05:01:00

Mud and Cushion Information

Mud Type: Gel Chem

Cushion Type:

Oil API:

37 deg API

Mud Weight: 10.00 lb/gal

Cushion Length:

ft

Water Salinity:

ppm

Viscosity: 66.00 sec/qt

Cushion Volume:

bbbl

Water Loss: 7.59 in³

Gas Cushion Type:

Resistivity: ohm.m

Gas Cushion Pressure:

psig

Salinity: 3500.00 ppm

Filter Cake: inches

Recovery Information

Recovery Table

Length ft	Description	Volume bbbl
62.00	GHOCM, 20%G, 30%O, 50%M	0.870
248.00	GMO, 20%G, 80%O	3.479
124.00	GMO, 10%G, 90%O	1.739
0.00	248' of G.I.P.	0.000

Total Length: 434.00 ft Total Volume: 6.088 bbl

Num Fluid Samples: 0

Num Gas Bombs: 0

Serial #:

Laboratory Name:

Laboratory Location:

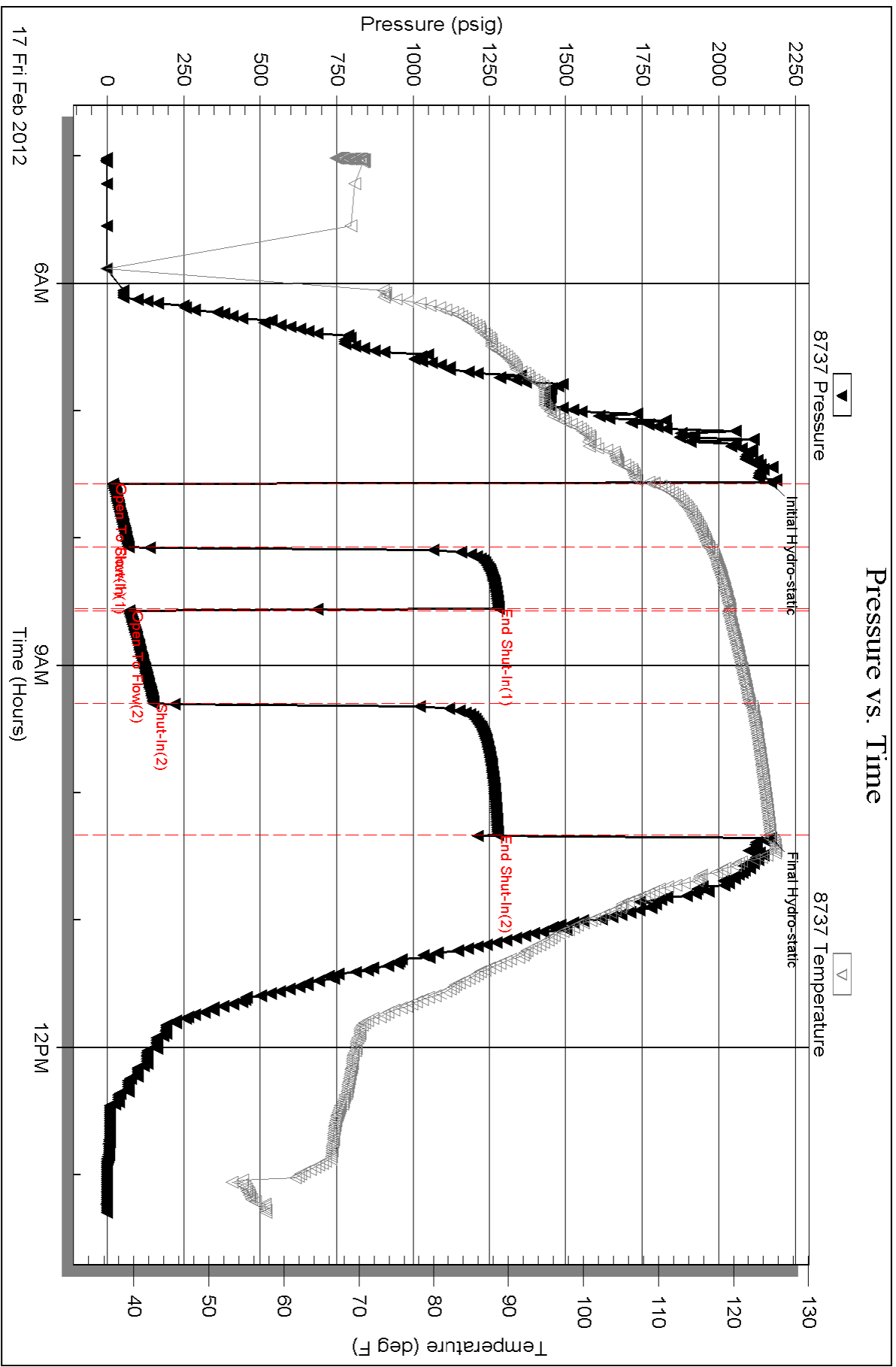
Recovery Comments: Gravity = 37 @ 60 Degrees = 37

Serial #: 8737

Outside Blue Ridge Petroleum Corp

Schwartz #1-30

DST Test Number: 4



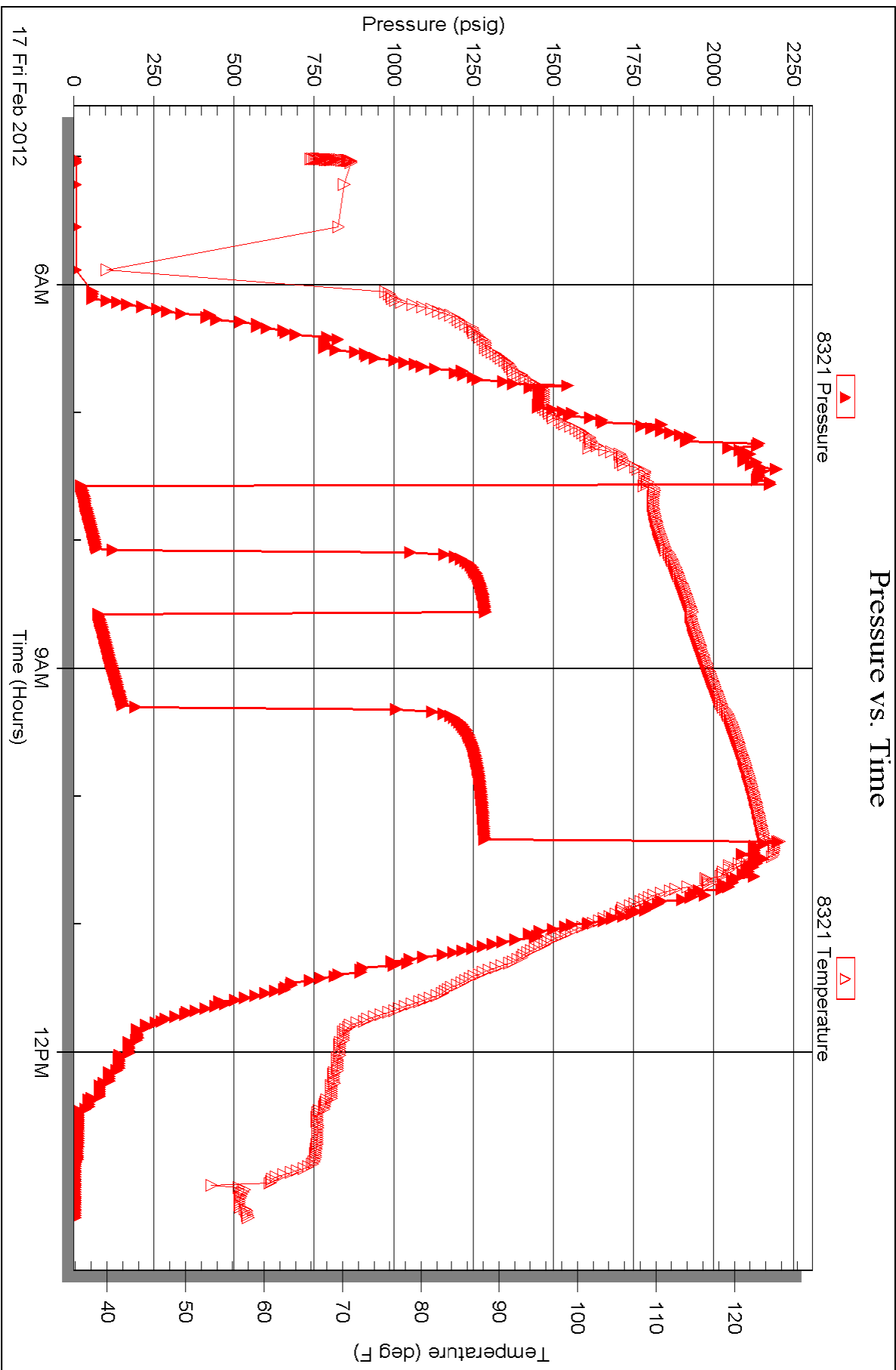
Serial #: 8321

Inside

Blue Ridge Petroleum Corp

Schwartz #1-30

DST Test Number: 4





TRILOBITE TESTING INC.

P.O. Box 1733 • Hays, Kansas 67601

RECEIVED
FEB 15 2012

Test Ticket

NO. 46395

BY: _____

Well Name & No. Schwartz 1-30 Test No. 1 Date 2-15-12
 Company Blue Ridge Petroleum Corporation Elevation 2455 KB 2475 GL
 Address PO Box 1913 ENID OK 73702-1913
 Co. Rep / Geo. Jim Mysglave Rig Southwind #1
 Location: Sec. 30 Twp. 18 S Rge. 25 W Co. NESS State KS

Interval Tested 4157-4235 Zone Tested Marmaton
 Anchor Length 78 Drill Pipe Run 4147 Mud Wt. 9.4
 Top Packer Depth 4152 Drill Collars Run 0 Vis 58
 Bottom Packer Depth 4157 Wt. Pipe Run 0 WL 6.0
 Total Depth 4235 Chlorides 3500 ppm System LCM 2
 Blow Description FFP Fair Blow Built To 9 IN
FSI Dead No Blow Back
FFP Fair Blow Built To 7 IN
FSI Dead No Blow Back

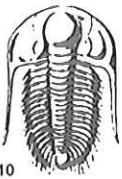
Rec	Feet of	%gas	%oil	%water	%mud
30	150cm		3		97
0	191 - CoIP				

Rec Total 30 BHT 113 Gravity _____ API RW _____ @ _____ °F Chlorides _____ ppm

(A) Initial Hydrostatic 2058 Test 1225 T-On Location 3:40
 (B) First Initial Flow 26 Jars _____ T-Started 4:10
 (C) First Final Flow 31 Safety Joint _____ T-Open 6:29
 (D) Initial Shut-In 85 Circ Sub _____ T-Pulled 9:14
 (E) Second Initial Flow 27 Hourly Standby _____ T-Out 11:35
 (F) Second Final Flow 34 Mileage 1200 RT 224 Comments _____
 (G) Final Shut-In 109 Sampler _____
 (H) Final Hydrostatic 1997 Straddle _____ Ruined Shale Packer _____
 Shale Packer _____ Ruined Packer _____
 Extra Packer _____ Extra Copies _____
 Extra Recorder _____ Sub Total 0
 Day Standby _____ Total 1449
 Accessibility _____ MP/DST Disc't _____
 Sub Total 1449

Approved By _____ Our Representative Jeff Brown

TriLOBite Testing Inc. shall not be liable for damaged of any kind of the property or personnel of the one for whom a test is made, or for any loss suffered or sustained, directly or indirectly, through the use of its equipment, or its statements or opinion concerning the results of any test, tools lost or damaged in the hole shall be paid for at cost by the party for whom the test is made.



TRILOBITE TESTING INC.

P.O. Box 1733 • Hays, Kansas 67601

RECEIVED
FEB 20 2012
BY: _____

Test Ticket

NO. 46283

Well Name & No. Schwartz 1-30 Test No. 2 Date 2-16-12
 Company Blue Ridge Petroleum Corp. Elevation 2455 KB 2445 GL
 Address Po Box 1913, Enid OK, 73702-1913
 Co. Rep / Geo. Jim Musgrove Rig Southwind #1
 Location: Sec. 30 Twp. 18S Rge. 25W Co. Ness State KS

Interval Tested 4278 - 4330 Zone Tested _____
 Anchor Length 52' Drill Pipe Run 4271 Mud Wt. 9.3
 Top Packer Depth 4273 Drill Collars Run - Vis 49
 Bottom Packer Depth 4278 Wt. Pipe Run - WL 5.6
 Total Depth 4330 Chlorides 3200 ppm System LCM -
 Blow Description IF-1 1/2" blow, dying
ISI - No blow back

FF - No blow for 10 min. flushed tool, surged, no blow
FSI - No blow back

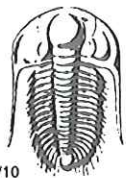
Rec	Feet of	%gas	%oil	%water	%mud
<u>8</u>	<u>Mud, oil scum</u>			<u>100</u>	
Rec	Feet of	%gas	%oil	%water	%mud
Rec	Feet of	%gas	%oil	%water	%mud
Rec	Feet of	%gas	%oil	%water	%mud
Rec	Feet of	%gas	%oil	%water	%mud
Rec Total <u>8'</u>	BHT <u>115°</u>	Gravity <u>-</u>	API RW <u>-</u>	@ <u>-</u>	F Chlorides <u>-</u> ppm

(A) Initial Hydrostatic 2174 Test 1225' T-On Location 12:02 am
 (B) First Initial Flow 32 Jars _____ T-Started 12:32 am
 (C) First Final Flow 38 Safety Joint _____ T-Open 2:50 am
 (D) Initial Shut-In 681 Circ Sub _____ T-Pulled 4:50 am
 (E) Second Initial Flow 37 Hourly Standby _____ T-Out 7:28 am
 (F) Second Final Flow 41 Mileage 80 X 2 224 Comments _____
 (G) Final Shut-In 582 Sampler _____
 (H) Final Hydrostatic 2134 Straddle _____ Ruined Shale Packer _____

Initial Open 30 Shale Packer _____ Ruined Packer _____
 Initial Shut-In 30 Extra Packer _____ Extra Copies _____
 Final Flow 30 Extra Recorder _____ Sub Total 0
 Final Shut-In 30 Day Standby _____ Total 1449'
 Accessibility _____ MP/DST Disc't _____
 Sub Total 1449'

Approved By _____ Our Representative Cody Bledorn

Trilobite Testing Inc. shall not be liable for damaged of any kind of the property or personnel of the one for whom a test is made, or for any loss suffered or sustained, directly or indirectly, through the use of its equipment, or its statements or opinion concerning the results of any test, tools lost or damaged in the hole shall be paid for at cost by the party for whom the test is made.



TRILOBITE TESTING INC.

P.O. Box 1733 • Hays, Kansas 67601

RECEIVED
FEB 20 2012

Test Ticket

NO. 46284

Well Name & No. Schwartz 1-30 Test No. 3 Date 2-16-12
 Company Blue Ridge Petroleum Corp. Elevation 2455 KB 2445 GL
 Address Po Box 1913, Enid OK, 73702-1913
 Co. Rep / Geo. Jim Musgrove Rig Southwind #1
 Location: Sec. 30 Twp. 18s Rge. 25W Co. Ness State KS

Interval Tested 4441 - 4492 Zone Tested Cherokee
 Anchor Length 51 Drill Pipe Run 4436 Mud Wt. 9.55
 Top Packer Depth 4436 Drill Collars Run — Vis 66
 Bottom Packer Depth 4441 Wt. Pipe Run — WL 76
 Total Depth 4492 Chlorides 3500 ppm System LCM —

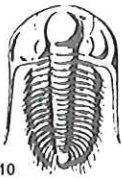
Blow Description IF-2 1/4" blow
ISI- No blow back
FF- No blow, flushed @ 10 Min. surged, No blow back
FSTI- No blow back.

Rec	Feet of	%gas	%oil	%water	%mud
<u>5</u>	<u>Freeoil</u>		<u>100</u>		
<u>20</u>	<u>OCM</u>		<u>20</u>		<u>80</u>
Rec	Feet of	%gas	%oil	%water	%mud
Rec	Feet of	%gas	%oil	%water	%mud
Rec	Feet of	%gas	%oil	%water	%mud

Rec Total 25 BHT 115° Gravity — API RW — @ — °F Chlorides — ppm

(A) Initial Hydrostatic 2156 Test 1225' T-On Location 3:20 pm
 (B) First Initial Flow 32 Jars — T-Started 4:32 pm
 (C) First Final Flow 36 Safety Joint — T-Open 6:13 pm
 (D) Initial Shut-In 106 Circ Sub — T-Pulled 8:38 pm
 (E) Second Initial Flow 36 Hourly Standby — T-Out 10:19 pm
 (F) Second Final Flow 43 Mileage 80 X 2 224' Comments —
 (G) Final Shut-In 156 Sampler —
 (H) Final Hydrostatic 2057 Straddle — Ruined Shale Packer —
 Shale Packer — Ruined Packer —
 Extra Packer — Extra Copies —
 Initial Open 30 Extra Recorder — Sub Total Ø
 Initial Shut-In 30 Day Standby — Total 1449'
 Final Flow 30 Accessibility — MP/DST Disc't —
 Final Shut-In 45 Sub Total 1449'

Approved By _____ Our Representative Cody Bleedorn
 Trilobite Testing Inc. shall not be liable for damaged of any kind of the property or personnel of the one for whom a test is made, or for any loss suffered or sustained, directly or indirectly, through the use of its equipment, or its statements or opinion concerning the results of any test, tools lost or damaged in the hole shall be paid for at cost by the party for whom the test is made.



TRILOBITE TESTING INC.

P.O. Box 1733 • Hays, Kansas 67601

RECEIVED
FEB 20 2012

Test Ticket

NO. 46285

BY: _____

Well Name & No. Schwartz 1-30 Test No. 4 Date 2-17-16
 Company Blue Ridge Petroleum Corp. Elevation 2455 KB 2445 GL
 Address Po Box 1913, Enid OK, 73702-1913
 Co. Rep / Geo. Jim Musgrove Rig Southwind #1
 Location: Sec. 30 Twp. 18s Rge. 25a Co. Ness State KS

Interval Tested 4392-4402 Zone Tested Mississippi
 Anchor Length 10' Drill Pipe Run 4398 Mud Wt. 9.55
 Top Packer Depth 4387 Drill Collars Run — Vis 66
 Bottom Packer Depth 4392 Wt. Pipe Run — WL 7.6
 Total Depth 4402 Chlorides 3500 ppm System LCM —

Blow Description IF - B.O.B. in 12 Min.
ISI - 2" blow back
FF - B.O.B. in 10 Min.
FSI - 1 1/2" blow back, died in 28 Min.

Rec	Feet of	%gas	%oil	%water	%mud
<u>62</u>	<u>GHOC M</u>	<u>20</u>	<u>30</u>	<u>50</u>	
<u>248</u>	<u>GMO</u>	<u>20</u>	<u>80</u>		
<u>124</u>	<u>GMO</u>	<u>10</u>	<u>90</u>		
<u>—</u>	<u>248' of G.I.P.</u>				
<u>—</u>					

Rec Total 434' BHT 124° Gravity 37 API RW — @ — °F Chlorides — ppm

(A) Initial Hydrostatic 2170 Test 1225' T-On Location 4:10 A.M.
 (B) First Initial Flow 18 Jars — T-Started 5:01am
 (C) First Final Flow 69 Safety Joint — T-Open 7:34am
 (D) Initial Shut-In 1280 Circ Sub — T-Pulled 10:19am
 (E) Second Initial Flow 72 Hourly Standby — T-Out 1:18pm
 (F) Second Final Flow 152 Mileage 80 X 2 224' Comments —
 (G) Final Shut-In 1278 Sampler —
 (H) Final Hydrostatic 2171 Straddle — Ruined Shale Packer —

Initial Open 30 Shale Packer — Ruined Packer —
 Initial Shut-In 30 Extra Packer — Extra Copies —
 Final Flow 45 Extra Recorder — Sub Total 0
 Final Shut-In 60 Day Standby — Total 1449'
 Accessibility — MP/DST Disc't —
 Sub Total 1449'

Approved By _____ Our Representative Eody Bledorn

TriLOBite Testing Inc. shall not be liable for damaged of any kind of the property or personnel of the one for whom a test is made, or for any loss suffered or sustained, directly or indirectly, through the use of its equipment, or its statements or opinion concerning the results of any test, tools lost or damaged in the hole shall be paid for at cost by the party for whom the test is made.