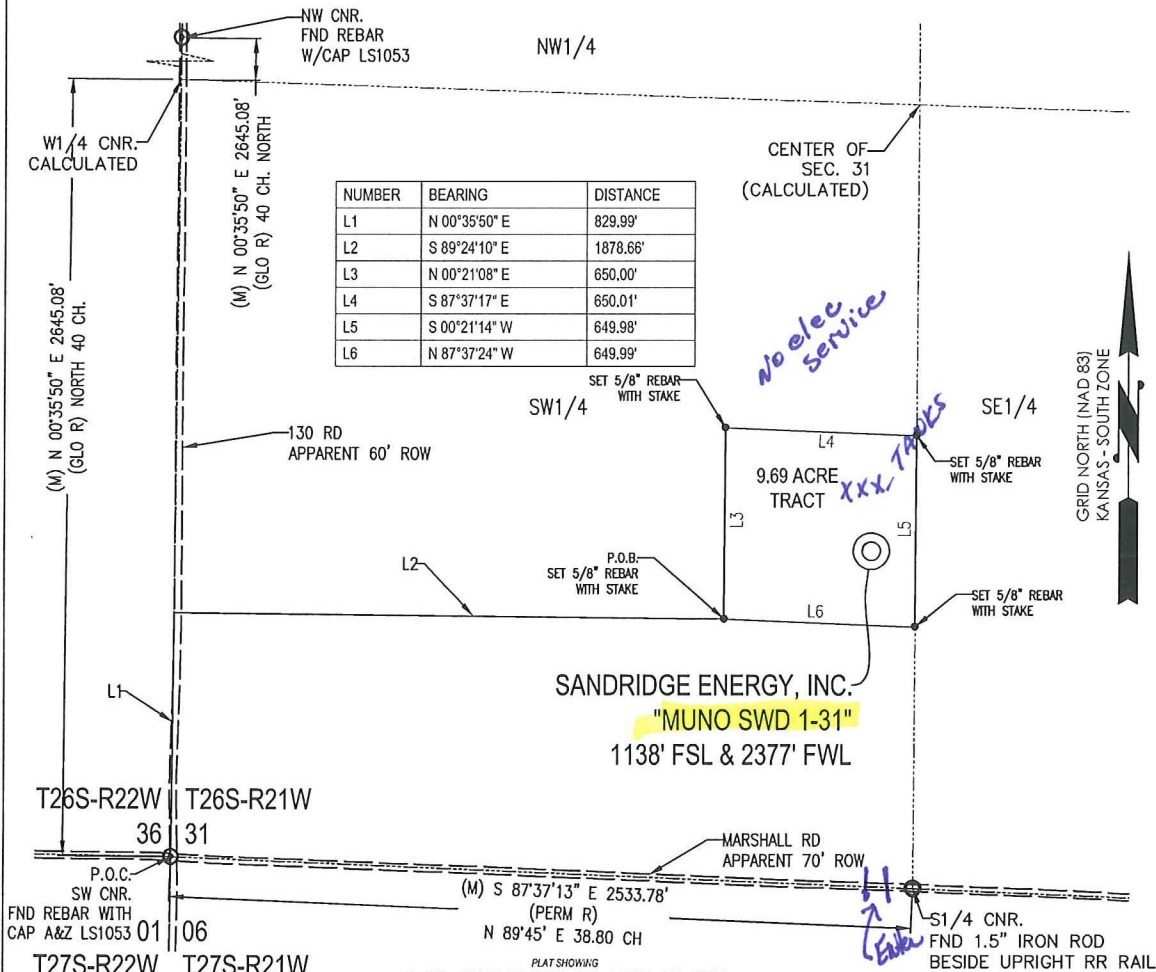




T 26 S - R 21 W



SANDRIDGE ENERGY, INC.
 "MUNO SWD 1-31"
 1138' FSL & 2377' FWL

PLAT SHOWING
 9.69 ACRE TRACT OF LAND IN THE
 SW 1/4 OF SECTION 31, T26S-R21W,
 FORD COUNTY, KANSAS

METES AND BOUNDS DESCRIPTION (9.69 ACRE TRACT)

PART OF THE SW 1/4 OF SECTION 31, TOWNSHIP 26 SOUTH, RANGE 21 WEST, FORD COUNTY, KANSAS, MORE PARTICULARLY DESCRIBED AS FOLLOWS:

COMMENCING AT A FOUND REBAR WITH CAP MARKED "A & Z LS1053" AT THE SW CORNER OF SAID SECTION 31;
 THENCE N 00°35'50" E ALONG THE WEST LINE OF SAID SECTION 31, A DISTANCE OF 829.99 FEET TO A POINT;
 THENCE S 89°24'10" E, A DISTANCE OF 1878.66 FEET TO A SET 5/8" REBAR WITH CAP MARKED "LS1121," SAID POINT BEING THE POINT OF BEGINNING;
 THENCE N 00°21'08" E, A DISTANCE OF 650.00 FEET TO A SET 5/8" REBAR WITH CAP MARKED "LS1121;"
 THENCE S 87°37'17" E, A DISTANCE OF 650.01 FEET TO A SET 5/8" REBAR WITH CAP MARKED "LS1121;"
 THENCE S 00°21'14" W, A DISTANCE OF 649.98 FEET TO A SET 5/8" REBAR WITH CAP MARKED "LS1121;"
 THENCE N 87°37'24" W, A DISTANCE OF 649.99 FEET TO THE POINT OF BEGINNING.

4/23/2012

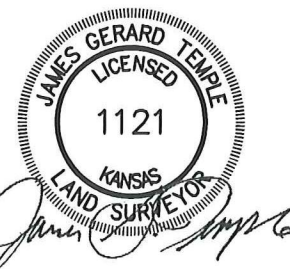
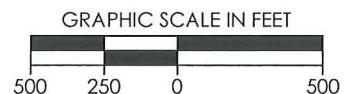
SAID TRACT CONTAINING 9.69 ACRES MORE OR LESS OF LAND AS SURVEYED.

BASIS OF BEARINGS:
 KANSAS COORDINATE SYSTEM 1983 SOUTH ZONE
BEARINGS: GRID
DISTANCES: US SURVEY FOOT AT GRID
COORDINATES: US SURVEY FOOT AT GRID

(GLO R) - GENERAL LAND OFFICE RECORD
 (PERM R) - PERMANENT SURVEY RECORD
 (M) - MEASURED DATA

SURVEYOR'S CERTIFICATE:

I, JAMES GERARD TEMPLE, KANSAS LICENSED PROFESSIONAL LAND SURVEYOR, NO. 1121, DO HEREBY CERTIFY THAT THIS PLAT REPRESENTS THE RESULTS OF A SURVEY MADE ON THE GROUND UNDER MY SUPERVISION ON THE DATE OF 04-23-2012.



REVISION	SandRidge		
1	Moved Well (04-23-2012)	"MUNO SWD 1-31" PART OF THE SW 1/4 OF SECTION 31, T-26-S, R-21-W PROPOSED DRILL SITE FORD COUNTY, KANSAS	
	SCALE: 1" = 500'	DRAWN BY: S. ANDER	SHEET NO.: 1 OF 1
	PLOT DATE: 04-23-2012		

Intent Information:

Tract containing 6.69 acres as part of SW/4 of section 31- 26S-21W, Ford County, KS.

Surface Owner:

Ford county Land & Cattle Company Inc

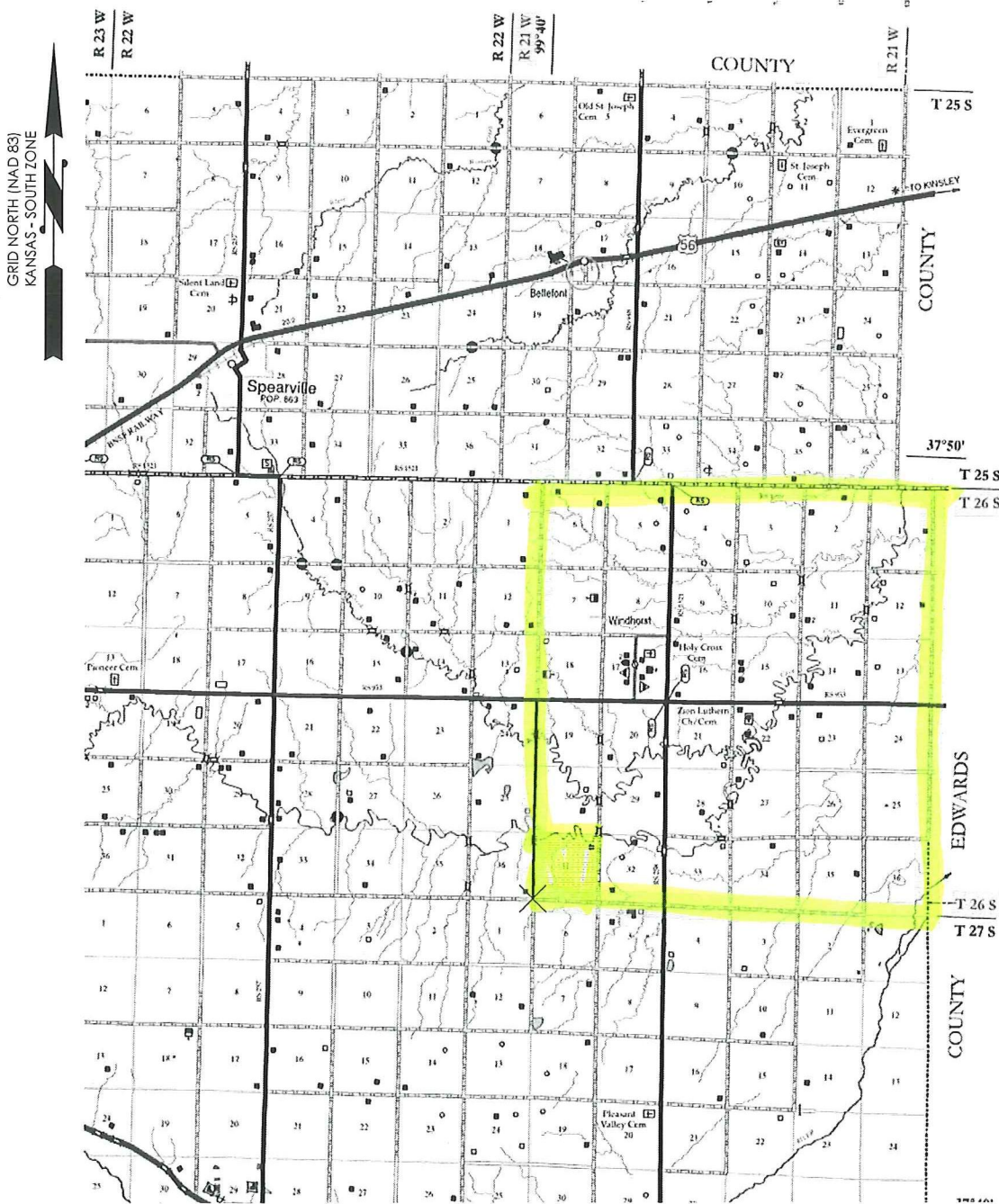
Ronnie Herrmann, Present

12466 Highway 400

Ford, Kansas 67842



VICINITY MAP



SEC. 31 TWP. 26S RNG. 21W
 COUNTY: FORD STATE: KS
 OPERATOR: SANDRIDGE ENERGY, INC.

GRAPHIC SCALE IN MILES



REVISION		SandRidge	
▲	Moved Well (04-23-2012)	"MUNO SWD 1-31" PART OF THE SW 1/4 OF SECTION 31, T-26-S, R-21-W PROPOSED DRILL SITE FORD COUNTY, KANSAS	
		SCALE: 1/2" = 1 MILE	
		PLOT DATE: 04-23-2012	DRAWN BY: S.ANDER SHEET NO.: 3 OF 3