



**TRILOBITE  
TESTING, INC.**

# DRILL STEM TEST REPORT

New Gulf Operating LLC

**8-12s-32w**

6310 102nd St.  
Tulsa OK 74137

**Merle 1-8**

ATTN: Steve Murphy

Job Ticket: 45072

**DST#: 1**

Test Start: 2012.02.25 @ 08:35:00

## GENERAL INFORMATION:

Formation: **Johnson**

Deviated: No Whipstock: ft (KB)

Time Tool Opened: 11:02:15

Time Test Ended: 16:00:45

Test Type: Conventional Bottom Hole (Initial)

Tester: Jace McKinney

Unit No: 46

**Interval: 4554.00 ft (KB) To 4614.00 ft (KB) (TVD)**

Reference Elevations: 3018.00 ft (KB)

Total Depth: 4614.00 ft (KB) (TVD)

3008.00 ft (CF)

Hole Diameter: 7.88 inches Hole Condition: Fair

KB to GR/CF: 10.00 ft

**Serial #: 8675**

**Inside**

Press @ Run Depth: 23.44 psig @ 4555.00 ft (KB)

Capacity: 8000.00 psig

Start Date: 2012.02.25

End Date:

2012.02.25

Last Calib.:

2012.02.25

Start Time: 08:35:01

End Time:

16:00:45

Time On Btm:

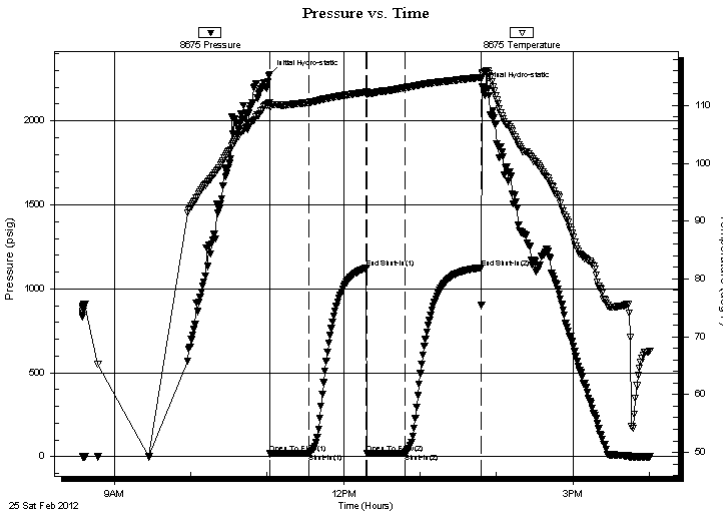
2012.02.25 @ 11:02:00

Time Off Btm:

2012.02.25 @ 13:49:00

**TEST COMMENT:** Built to 1" blow  
No return blow  
No blow  
No return blow

## PRESSURE SUMMARY



Time (Min.)	Pressure (psig)	Temp (deg F)	Annotation
0	2277.12	110.52	Initial Hydro-static
1	18.34	109.69	Open To Flow (1)
31	20.31	110.54	Shut-In(1)
76	1123.88	112.30	End Shut-In(1)
77	21.35	111.85	Open To Flow (2)
107	23.44	113.08	Shut-In(2)
166	1126.10	114.86	End Shut-In(2)
167	2205.40	115.56	Final Hydro-static

## Recovery

Length (ft)	Description	Volume (bbl)
10.00	100% Mud	0.14

## Gas Rates

	Choke (inches)	Pressure (psig)	Gas Rate (Mcf/d)





**TRILOBITE  
TESTING, INC.**

# DRILL STEM TEST REPORT

## FLUID SUMMARY

New Gulf Operating LLC

**8-12s-32w**

6310 102nd St.  
Tulsa OK 74137

**Merle 1-8**

Job Ticket: 45072

**DST#: 1**

ATTN: Steve Murphy

Test Start: 2012.02.25 @ 08:35:00

### Mud and Cushion Information

Mud Type: Gel Chem

Cushion Type:

Oil API:

deg API

Mud Weight: 9.00 lb/gal

Cushion Length:

ft

Water Salinity:

ppm

Viscosity: 51.00 sec/qt

Cushion Volume:

bbbl

Water Loss: 6.40 in<sup>3</sup>

Gas Cushion Type:

Resistivity: 0.00 ohm.m

Gas Cushion Pressure:

psig

Salinity: 3200.00 ppm

Filter Cake: 1.00 inches

### Recovery Information

Recovery Table

Length ft	Description	Volume bbl
10.00	100% Mud	0.140

Total Length: 10.00 ft      Total Volume: 0.140 bbl

Num Fluid Samples: 0

Num Gas Bombs: 0

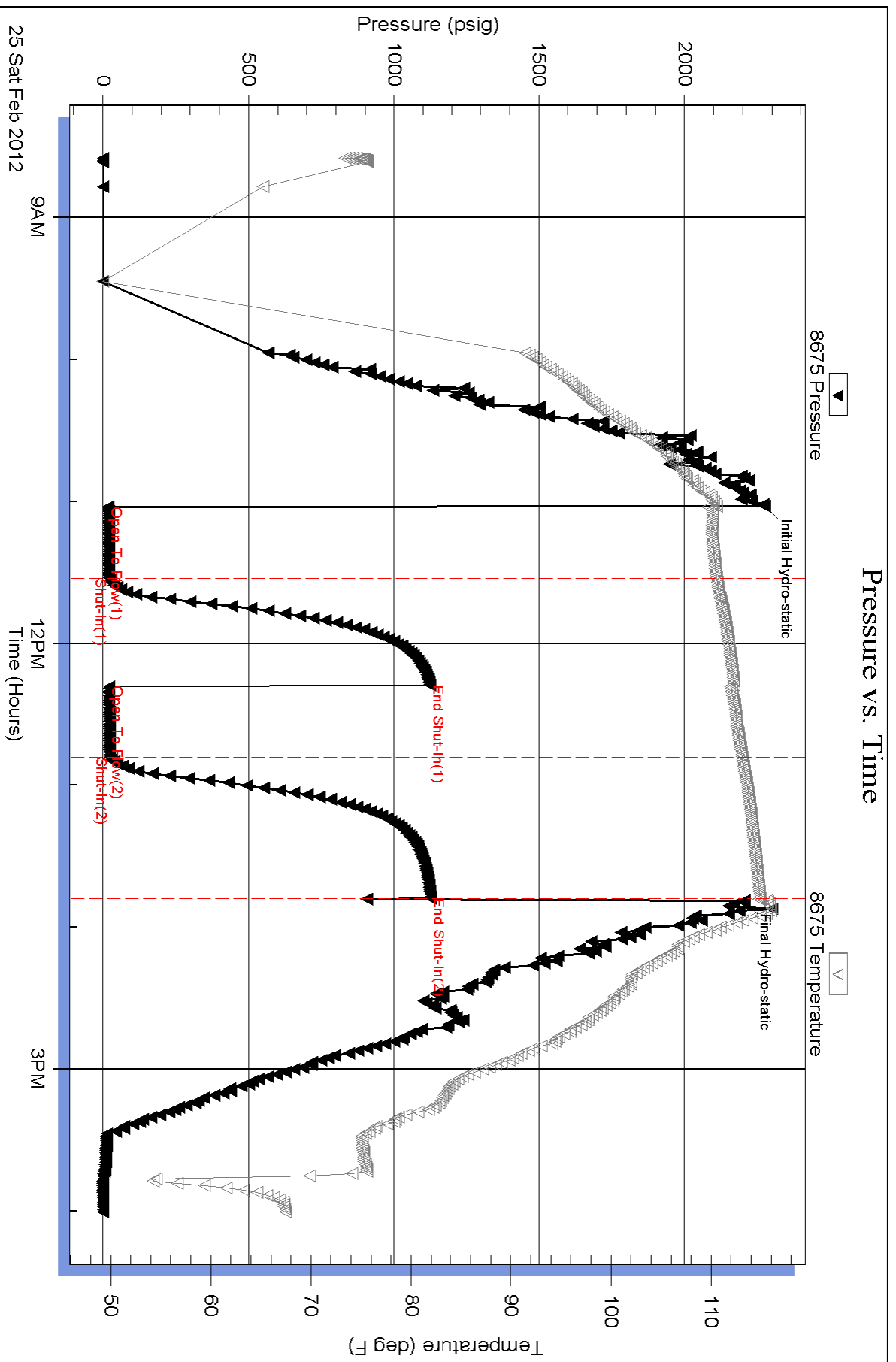
Serial #:

Laboratory Name:

Laboratory Location:

Recovery Comments:

### Pressure vs. Time



Serial #: 8650

Outside New Gulf Operating LLC

Merle 1-8

DST Test Number: 1

