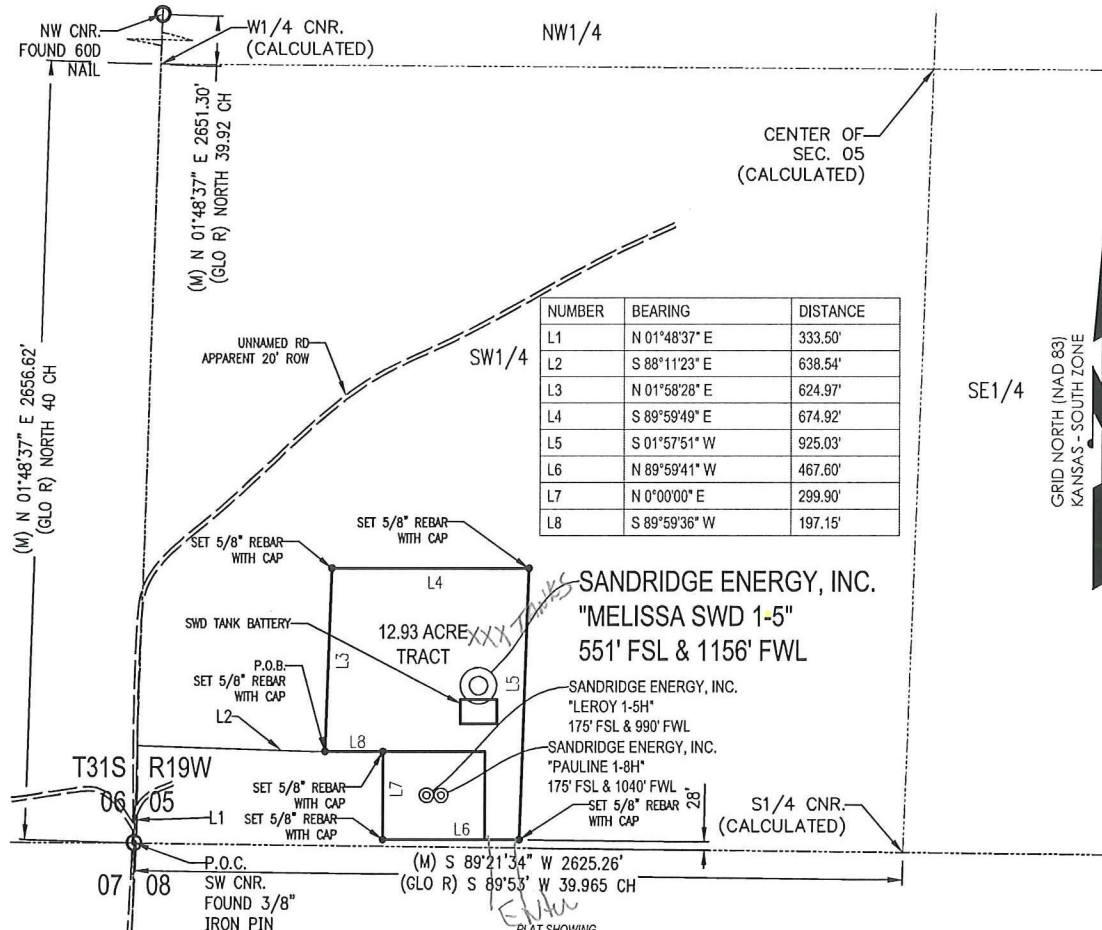




T 31 S - R 19 W



**12.93 ACRE TRACT OF LAND IN THE SW 1/4 OF SECTION 05, T31S-R19W, COMANCHE COUNTY, KANSAS**

**METES AND BOUNDS DESCRIPTION (12.93 ACRE TRACT)**

PART OF THE SW 1/4 OF SECTION 05, TOWNSHIP 31 SOUTH, RANGE 19 WEST, COMANCHE COUNTY, KANSAS, MORE PARTICULARLY DESCRIBED AS FOLLOWS:

COMMENCING AT A FOUND 3/8" IRON PIN AT THE SW CORNER OF SAID SECTION 05; THENCE N 01°48'37" E ALONG THE WEST LINE OF SAID SECTION 05, A DISTANCE OF 333.50 FEET TO A POINT; THENCE S 88°11'23" E, A DISTANCE OF 638.54 FEET TO A SET 5/8" REBAR WITH A CAP MARKED "LS1404," SAID POINT BEING THE POINT OF BEGINNING; THENCE N 01°58'28" E, A DISTANCE OF 624.97 FEET TO A SET 5/8" REBAR WITH A CAP MARKED "LS1404;" THENCE S 89°59'49" E, A DISTANCE OF 674.92 FEET TO A SET 5/8" REBAR WITH A CAP MARKED "LS1404;" THENCE S 01°57'51" W, A DISTANCE OF 925.03 FEET TO A SET 5/8" REBAR WITH A CAP MARKED "LS1404;" THENCE N 89°59'41" W, A DISTANCE OF 467.60 FEET TO A SET 5/8" REBAR WITH A CAP MARKED "LS1404;" THENCE N 00°00'00" E, A DISTANCE OF 299.90 FEET TO A SET 5/8" REBAR WITH A CAP MARKED "LS1404;" THENCE S 89°59'36" W, A DISTANCE OF 197.15 FEET TO THE POINT OF BEGINNING.

SAID TRACT CONTAINING 12.93 ACRES MORE OR LESS OF LAND AS SURVEYED.

**BASIS OF BEARINGS:**

KANSAS COORDINATE SYSTEM 1983 SOUTH ZONE  
 BEARINGS: GRID  
 DISTANCES: US SURVEY FOOT AT GRID  
 COORDINATES: US SURVEY FOOT AT GRID

**SURVEYOR'S CERTIFICATE:**

I, C. ED GRAY, KANSAS LICENSED PROFESSIONAL LAND SURVEYOR, NO. 1404, DO HEREBY CERTIFY THAT THIS PLAT REPRESENTS THE RESULTS OF A SURVEY MADE ON THE GROUND UNDER MY SUPERVISION ON THE DATE OF 04-25-2012.



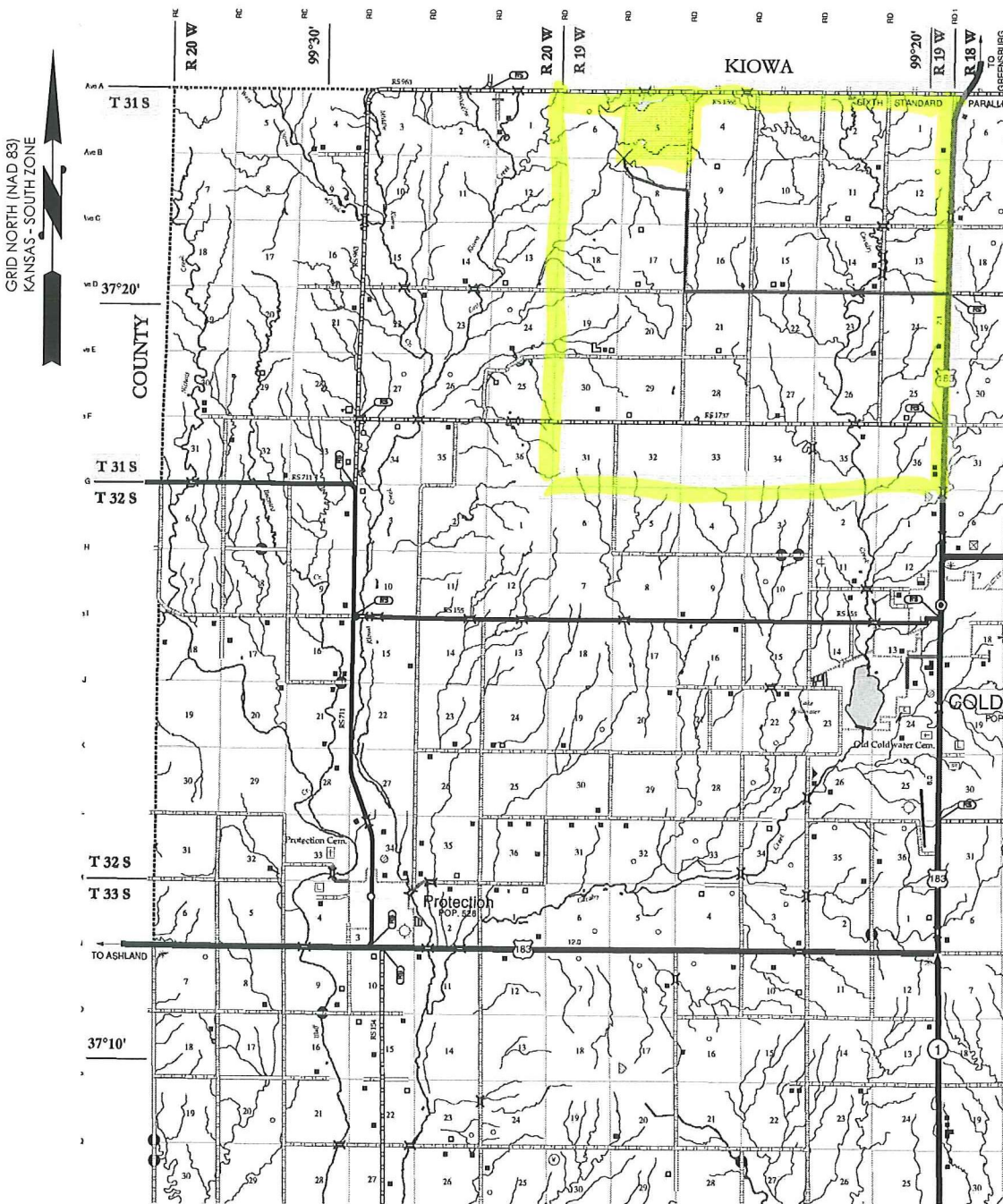
(GLO R)- GENERAL LAND OFFICE RECORD  
 (PERM R)- PERMANENT SURVEY RECORD  
 (M)- MEASURED DATA

GRAPHIC SCALE IN FEET



REVISION		<b>SandRidge</b>	
▲	ADDED BHL (04-25-2012)	PART OF THE SW 1/4 OF SECTION 05, T-31-S, R-19-W PROPOSED DRILL SITE COMANCHE COUNTY, KANSAS	
		SCALE: 1" = 500'	
		PLOT DATE: 04-25-2012	DRAWN BY: S.ANDER
			SHEET NO.: 1 OF 1

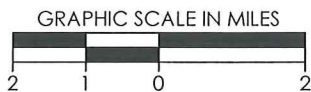
# VICINITY MAP



SEC. 05 TWP. 31S RNG. 19W

COUNTY: COMANCHE STATE: KS

OPERATOR: SANDRIDGE ENERGY, INC.



REVISION		<b>SandRidge</b>	
▲	ADDED BHL (04-25-2012)	"MELISSA SWD 1-5" PART OF THE SW1/4 OF SECTION 05, T-31-S, R-19-W PROPOSED DRILL SITE COMANCHE COUNTY, KANSAS	
		SCALE: 1/2" = 1 MILE	
		PLOT DATE: 04-25-2012	DRAWN BY: S. SANDER
			SHEET NO.: 3 OF 3