

# T31S, R6W, 6th P.M.

## SGOMI

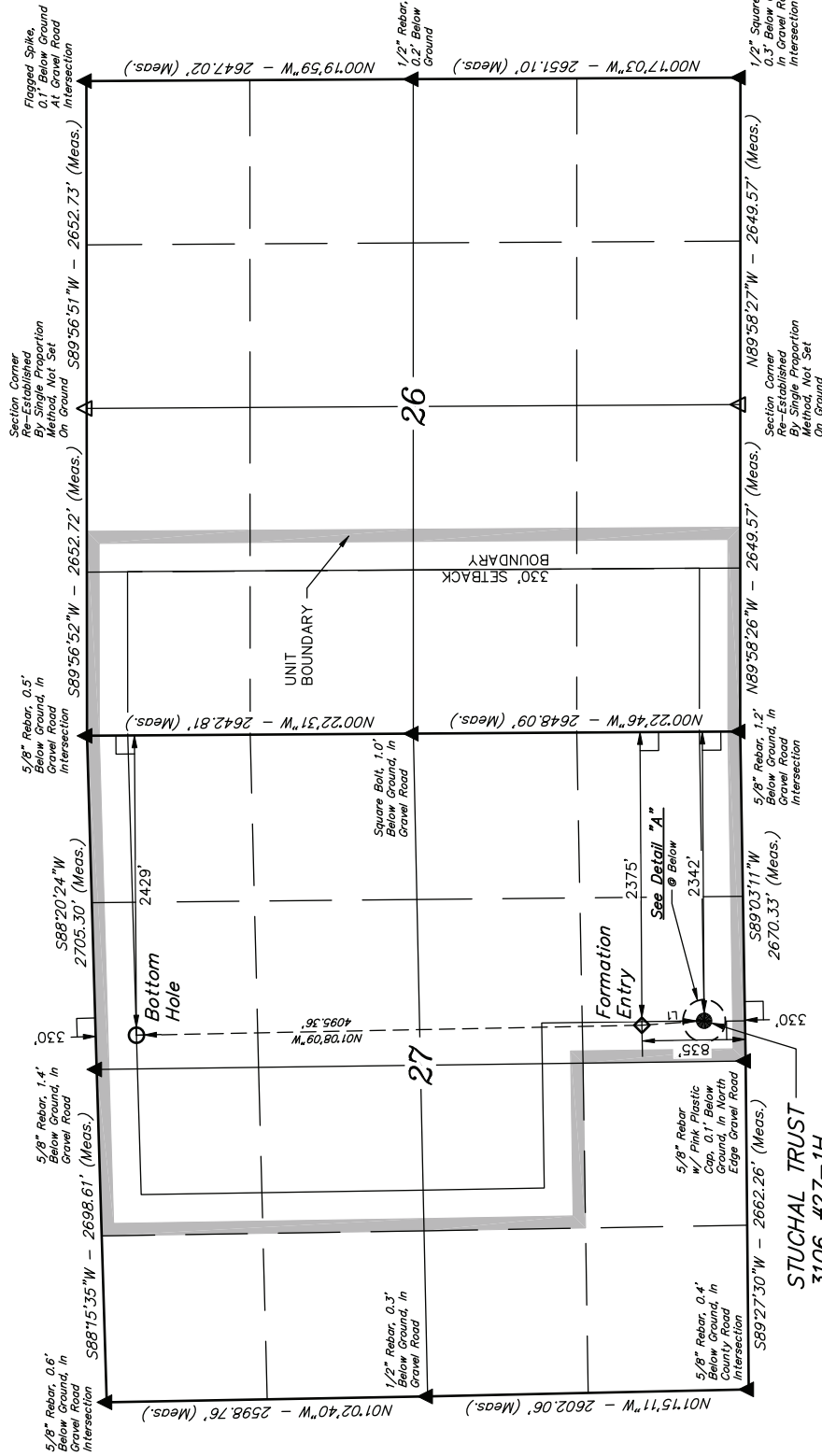
Well location, STUCHAL TRUST 3106 #27-1H, located as shown in the SW 1/4 SE 1/4 of Section 27, T31S, R6W, 6th P.M., Harper County, Kansas.

### BASIS OF ELEVATION

SPOT ELEVATION LOCATED AT THE NORTHEAST CORNER OF SECTION 22, T33S, R7W, 6th P.M. TAKEN FROM THE ANTHONY, QUADRANGLE, KANSAS, HARPER COUNTY, 7.5 MINUTE QUAD (TOPOGRAPHIC MAP) PUBLISHED BY THE UNITED STATES DEPARTMENT OF THE INTERIOR, GEOLOGICAL SURVEY. SAID ELEVATION IS MARKED AS BEING 1348 FEET.

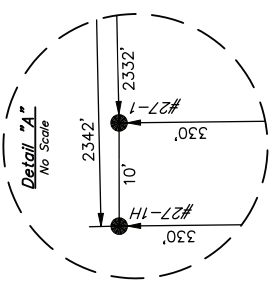
### BASIS OF BEARINGS

BASIS OF BEARINGS IS A G.P.S. OBSERVATION.

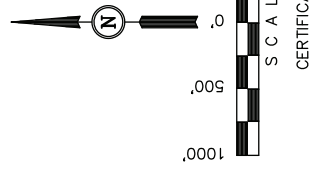


STUCHAL TRUST  
3106 #27-1H  
Elev. Ungraded  
Ground = 1394'

LINE	BEARING	LENGTH
L1	N04°04'52"W	505.73'



- LEGEND:**
- = 90° SYMBOL
  - = PROPOSED WELL HEAD.
  - ▲ = SECTION CORNERS LOCATED.
  - △ = SECTION CORNERS RE-ESTABLISHED. (Not Set on Ground.)



THIS IS TO CERTIFY THAT THE ABOVE PLAT WAS PREPARED FROM FIELD NOTES OF ACTUAL SURVEYS MADE BY ME OR UNDER MY SUPERVISION AND THAT THE SAME ARE TRUE AND CORRECT TO THE BEST OF MY KNOWLEDGE AND BELIEF.

**LOUISIANA SURVEYORS**  
REGISTERED LAND SURVEYOR  
REGISTRATION NO. 1368  
STATE OF MISSISSIPPI

LS-1360

SCALE	DATE SURVEYED:	DATE DRAWN:
1" = 1000'	11-01-11	11-08-11

**UINTEAH ENGINEERING & LAND SURVEYING**  
85 SOUTH 200 EAST - VERNAL, UTAH 84078  
(435) 789-1017

PARTY	REFERENCES
L.S. K.H. C.C.	G.L.O. PLAT

WEATHER	FILE
COOL	SGOMI

NAD 83 (TARGET BOTTOM HOLE)	NAD 83 (FORMATION ENTRY)
LATITUDE = 37°19'33.94" (37.326094)	LATITUDE = 37°18'53.46" (37.314850)
LONGITUDE = 97°57'27.75" (97.957708)	LONGITUDE = 97°57'26.38" (97.957453)
NAD 27 (TARGET BOTTOM HOLE)	NAD 27 (FORMATION ENTRY)
LATITUDE = 37°19'33.88" (37.326078)	LATITUDE = 37°18'53.39" (37.314831)
LONGITUDE = 97°57'26.54" (97.957372)	LONGITUDE = 97°57'25.18" (97.957114)

T31S, R6W, 6th P.M.

SGOMI

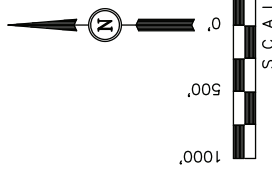
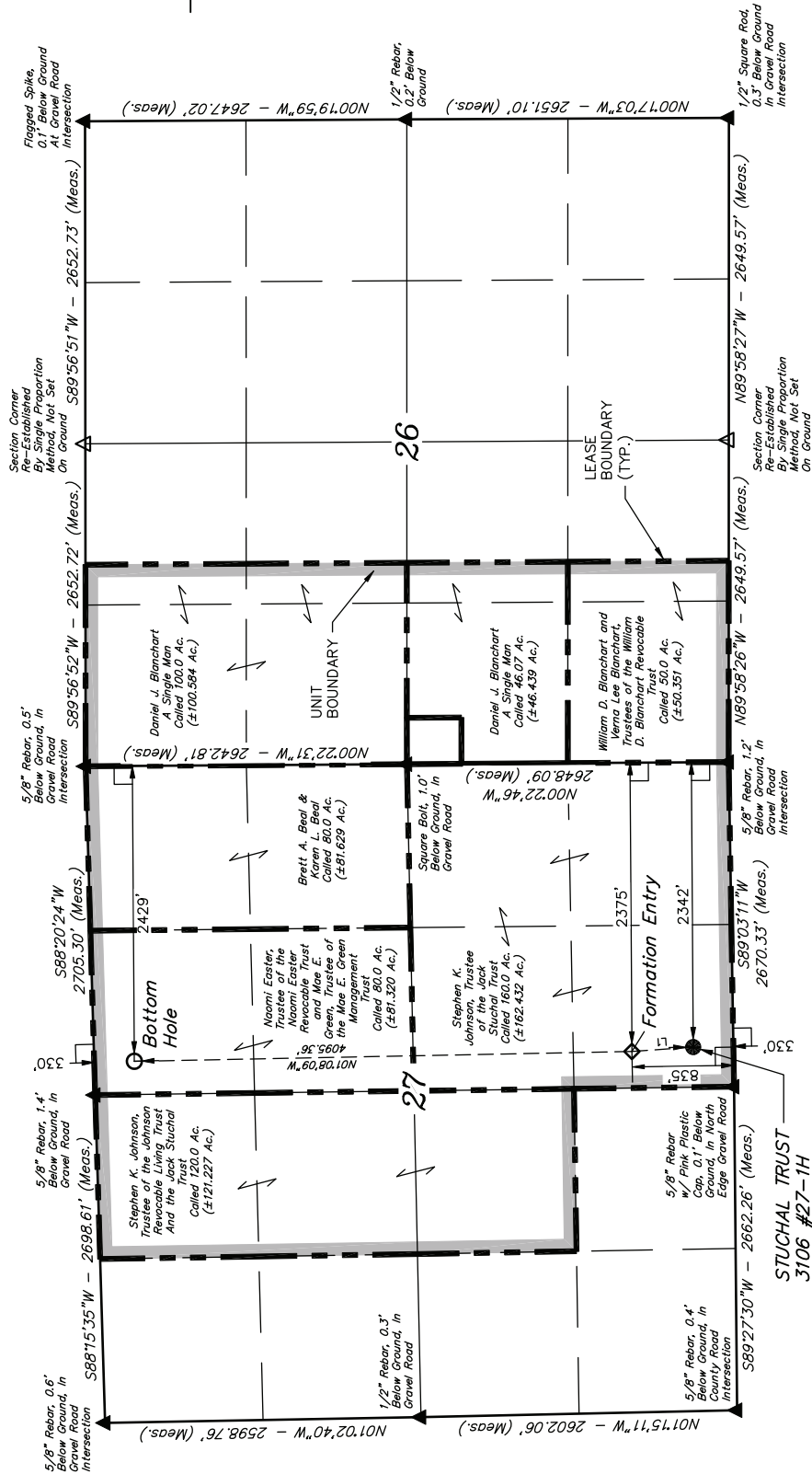
# LEASE BOUNDARY PLAT

(For STUCHAL TRUST 3106 #27-1 & #27-1H)

Located In  
SECTION 27, T31S, R6W, 6th P.M.  
Harper County, Kansas

BASIS OF BEARINGS

BASIS OF BEARINGS IS A G.P.S. OBSERVATION.



CERTIFICATE.  
THIS IS TO CERTIFY THAT THE ABOVE PLAT WAS PREPARED FROM FIELD NOTES OF ACTUAL SURVEYS MADE UNDER MY PERSONAL SUPERVISION AND THAT THE SAME ARE TRUE AND CORRECT TO THE BEST OF MY KNOWLEDGE AND BELIEF.

LINE	BEARING	LENGTH
L1	N04°04'52"W	505.73'

- LEGEND:**
- = 90° SYMBOL
  - = PROPOSED WELL HEAD.
  - ▲ = SECTION CORNERS LOCATED.
  - △ = SECTION CORNERS RE-ESTABLISHED. (Not Set on Ground.)

NAD 83 (FORMATION ENTRY)	NAD 83 (SURFACE LOCATION)
LATITUDE = 37°18'53.46" (37.314850)	LATITUDE = 37°18'48.47" (37.313464)
LONGITUDE = 97°57'26.83" (97.957453)	LONGITUDE = 97°57'26.38" (97.957331)
NAD 27 (FORMATION ENTRY)	NAD 27 (SURFACE LOCATION)
LATITUDE = 37°18'53.39" (37.314831)	LATITUDE = 37°18'48.40" (37.313444)
LONGITUDE = 97°57'25.61" (97.957114)	LONGITUDE = 97°57'25.18" (97.956894)

UINTAH ENGINEERING & LAND SURVEYING  
85 SOUTH 200 EAST - VERNAL, UTAH 84078  
(435) 789-1017

SCALE	DATE SURVEYED:	DATE DRAWN:
1" = 1000'	11-01-11	12-06-11
PARTY	REFERENCES	
L.S. K.H. C.C.	G.L.O. PLAT	
WEATHER	FILE	
COOL	SCOMI	

SGOMI

PLOT PLAN FOR

STUCHAL TRUST 3106 #27-1, #27-1H  
SECTION 27, T31S, R6W, 6th P.M.  
SW 1/4 SE 1/4

FIGURE #1

SCALE: 1" = 60'  
DATE: 12-01-11  
DRAWN BY: C.C.  
REVISED: 03-01-12  
REVISED: 04-16-12

