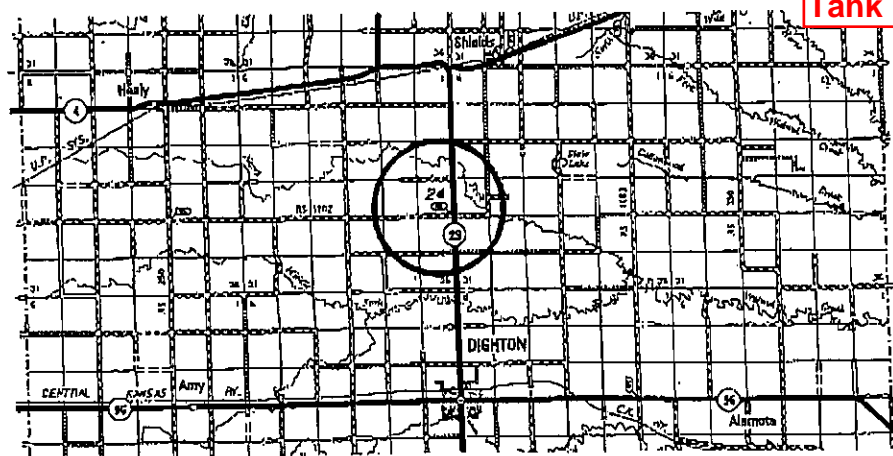
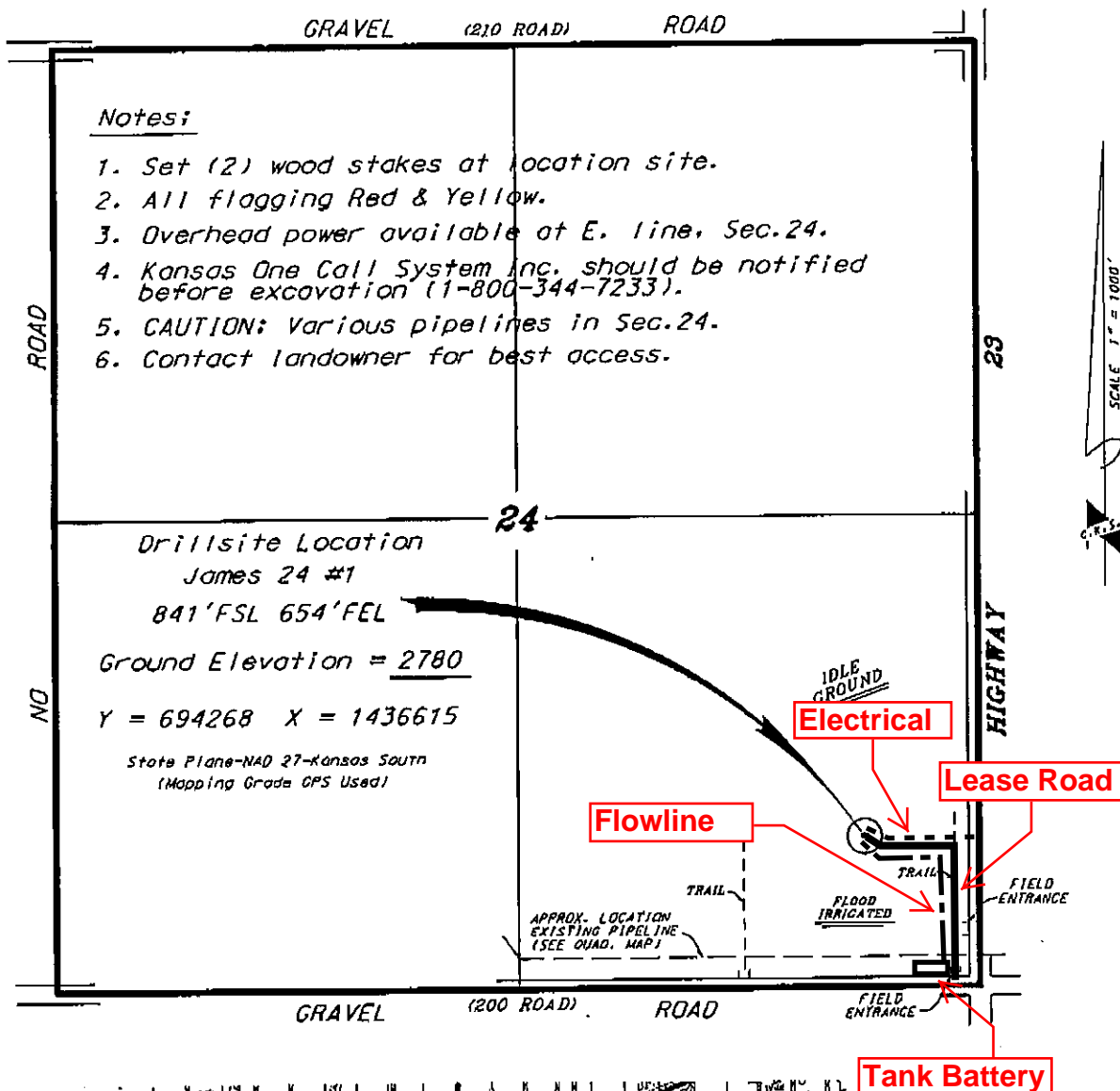


*Ingress and egress to location as shown on this plat is for usage only and may not be legally opened for public use. Contact landowner, tenant and county road department for access.

O'BRIEN RESOURCES, LLC
JAMES LEASE
SE.1/4, SECTION 24, T17S, R29W
LANE COUNTY, KANSAS



Controlling data is based upon the best maps and photographs available to us and upon a regular section of land containing 840 acres.

Approximate section lines were determined using the normal standard of care of oilfield surveyors practicing in the state of Kansas. The surveyor's, which establish the precise section lines, were not necessarily located, and the exact location of the oilfield location in the section is not guaranteed. Therefore, the operator assuming this service and accepting this plot and all other parties relying thereon agree to hold Central Kansas Oilfield Services, Inc., its officers and employees harmless from all taxes, costs and expenses and shall entities released from any liability from incidental or consequential damages.

Elevations derived from National Geodetic Vertical Datum.

DATE April 17, 2012

CENTRAL KANSAS OILFIELD SERVICES, INC. (620)792-1977