



**TRILOBITE
TESTING, INC.**

DRILL STEM TEST REPORT

Abercrombie Energy
10209 W Central Ste 2
Wichita, Ks 67212
ATTN: Mike Maune

24-19-26 Ness, Ks

Vogel 3-24

Job Ticket: 45050

DST#: 1

Test Start: 2012.04.19 @ 04:44:44

GENERAL INFORMATION:

Formation: **Miss**
 Deviated: No Whipstock: ft (KB)
 Time Tool Opened: 07:29:54
 Time Test Ended: 14:23:54
 Interval: **4528.00 ft (KB) To 4585.00 ft (KB) (TVD)**
 Total Depth: 4585.00 ft (KB) (TVD)
 Hole Diameter: 7.88 inches Hole Condition: Good
 Test Type: Conventional Bottom Hole (Initial)
 Tester: Brandon Turley
 Unit No: 60
 Reference Elevations: 2632.00 ft (KB)
 2622.00 ft (CF)
 KB to GR/CF: 10.00 ft

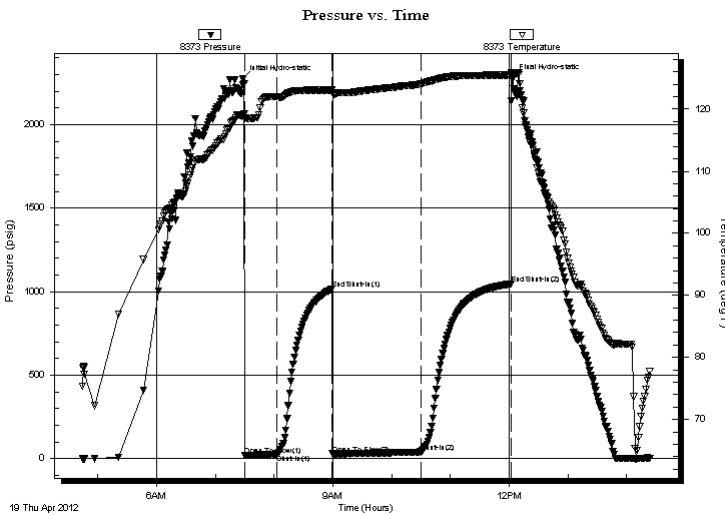
Serial #: 8373

Inside

Press @ Run Depth: 40.89 psig @ 4529.00 ft (KB) Capacity: 8000.00 psig
 Start Date: 2012.04.19 End Date: 2012.04.19 Last Calib.: 2012.04.19
 Start Time: 04:44:44 End Time: 14:23:54 Time On Btm: 2012.04.19 @ 07:28:09
 Time Off Btm: 2012.04.19 @ 12:03:23

TEST COMMENT: IF: Surface blow built to 1 1/2.
 IS: No return.
 FF: Surface blow built to 3 1/2.
 FS: No retrun.

PRESSURE SUMMARY



Time (Min.)	Pressure (psig)	Temp (deg F)	Annotation
0	2271.99	118.93	Initial Hydro-static
2	19.30	118.55	Open To Flow (1)
35	26.56	122.01	Shut-In(1)
91	1014.82	123.04	End Shut-In(1)
92	27.47	122.55	Open To Flow (2)
182	40.89	124.05	Shut-In(2)
274	1046.18	125.51	End Shut-In(2)
276	2273.05	125.79	Final Hydro-static

Recovery

Length (ft)	Description	Volume (bbl)
62.00	gocm 5%g 35%o 60%m	0.87
0.00	31 GIP	0.00

Gas Rates

Choke (inches)	Pressure (psig)	Gas Rate (Mcf/d)



**TRILOBITE
TESTING, INC.**

DRILL STEM TEST REPORT

FLUID SUMMARY

Abercrombie Energy

24-19-26 Ness, Ks

10209 W Central Ste 2
Wichita, Ks 67212

Vogel 3-24

Job Ticket: 45050

DST#: 1

ATTN: Mike Maune

Test Start: 2012.04.19 @ 04:44:44

Mud and Cushion Information

Mud Type: Gel Chem

Cushion Type:

Oil API:

0 deg API

Mud Weight: 9.00 lb/gal

Cushion Length:

ft

Water Salinity:

0 ppm

Viscosity: 45.00 sec/qt

Cushion Volume:

bbbl

Water Loss: 7.60 in³

Gas Cushion Type:

Resistivity: 0.00 ohm.m

Gas Cushion Pressure:

psig

Salinity: 3200.00 ppm

Filter Cake: 1.00 inches

Recovery Information

Recovery Table

Length ft	Description	Volume bbbl
62.00	gocm 5%g 35%o 60%m	0.870
0.00	31 GIP	0.000

Total Length: 62.00 ft Total Volume: 0.870 bbl

Num Fluid Samples: 0

Num Gas Bombs: 0

Serial #:

Laboratory Name:

Laboratory Location:

Recovery Comments:

Pressure vs. Time

