



**TRILOBITE
TESTING, INC.**

DRILL STEM TEST REPORT

Abercrombie Energy
10209 W Central Ste 2
Wichita, Ks 67212
ATTN: Mike Maune

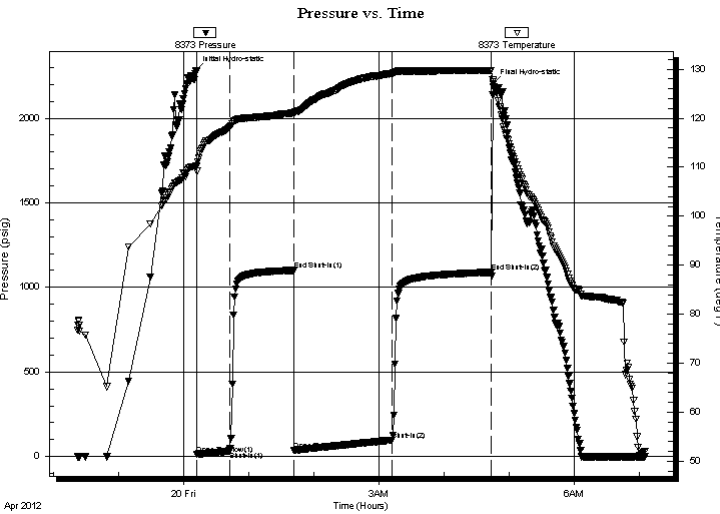
24-19-26 Ness, Ks
Vogel 3-24
Job Ticket: 46501 **DST#: 2**
Test Start: 2012.04.19 @ 22:22:16

GENERAL INFORMATION:

Formation: **Miss**
Deviated: No Whipstock: ft (KB)
Time Tool Opened: 00:12:11
Time Test Ended: 07:05:11
Interval: **4584.00 ft (KB) To 4590.00 ft (KB) (TVD)**
Total Depth: 4590.00 ft (KB) (TVD)
Hole Diameter: 7.88 inches Hole Condition: Good
Test Type: Conventional Bottom Hole (Reset)
Tester: Brandon Turley
Unit No: 60
Reference Elevations: 2632.00 ft (KB)
2622.00 ft (CF)
KB to GR/CF: 10.00 ft

Serial #: 8373 Inside
Press @ Run Depth: 97.54 psig @ 4585.00 ft (KB) Capacity: 8000.00 psig
Start Date: 2012.04.19 End Date: 2012.04.20 Last Calib.: 2012.04.20
Start Time: 22:22:16 End Time: 07:05:11 Time On Btm: 2012.04.20 @ 00:10:56
Time Off Btm: 2012.04.20 @ 04:44:55

TEST COMMENT: IF: BOB in 24 min.
IS: No return.
FF: BOB in 25 min.
FS: Surface blow died in 30 min.



PRESSURE SUMMARY

Time (Min.)	Pressure (psig)	Temp (deg F)	Annotation
0	2282.31	110.18	Initial Hydro-static
2	15.14	109.14	Open To Flow (1)
32	33.60	118.14	Shut-In(1)
91	1100.68	121.08	End Shut-In(1)
91	37.67	120.78	Open To Flow (2)
182	97.54	129.18	Shut-In(2)
273	1089.48	129.74	End Shut-In(2)
274	2202.19	127.45	Final Hydro-static

Recovery

Length (ft)	Description	Volume (bbl)
62.00	mco 10%g 50%o 40%m	0.87
144.00	go 10%g 90%o	2.02
0.00	310 GIP	0.00

* Recovery from multiple tests

Gas Rates

Choke (inches)	Pressure (psig)	Gas Rate (Mcf/d)



**TRILOBITE
TESTING, INC.**

DRILL STEM TEST REPORT

FLUID SUMMARY

Abercrombie Energy

24-19-26 Ness, Ks

10209 W Central Ste 2
Wichita, Ks 67212

Vogel 3-24

Job Ticket: 46501

DST#: 2

ATTN: Mike Maune

Test Start: 2012.04.19 @ 22:22:16

Mud and Cushion Information

Mud Type: Gel Chem

Cushion Type:

Oil API:

39 deg API

Mud Weight: 9.00 lb/gal

Cushion Length:

ft

Water Salinity:

0 ppm

Viscosity: 47.00 sec/qt

Cushion Volume:

bbbl

Water Loss: 6.80 in³

Gas Cushion Type:

Resistivity: 0.00 ohm.m

Gas Cushion Pressure:

psig

Salinity: 2800.00 ppm

Filter Cake: 1.00 inches

Recovery Information

Recovery Table

Length ft	Description	Volume bbl
62.00	mcgo 10%g 50%o 40%m	0.870
144.00	go 10%g 90%o	2.020
0.00	310 GIP	0.000

Total Length: 206.00 ft Total Volume: 2.890 bbl

Num Fluid Samples: 0

Num Gas Bombs: 0

Serial #:

Laboratory Name:

Laboratory Location:

Recovery Comments: 38@50=39

