



TRILOBITE TESTING, INC.

DRILL STEM TEST REPORT

Abercrombie Energy
 10209 W Central Ste 2
 Wichita, Ks 67212
 ATTN: Mike Maune

24-19-26 Ness, Ks
Vogel 3-24
 Job Ticket: 46502 **DST#: 3**
 Test Start: 2012.04.20 @ 16:12:39

GENERAL INFORMATION:

Formation: **Miss**
 Deviated: No Whipstock: ft (KB)
 Time Tool Opened: 17:47:34
 Time Test Ended: 01:25:34
 Interval: **4589.00 ft (KB) To 4595.00 ft (KB) (TVD)**
 Total Depth: 4595.00 ft (KB) (TVD)
 Hole Diameter: 7.88 inches Hole Condition: Good
 Test Type: Conventional Bottom Hole (Reset)
 Tester: Brandon Turley
 Unit No: 60
 Reference Elevations: 2632.00 ft (KB)
 2622.00 ft (CF)
 KB to GR/CF: 10.00 ft

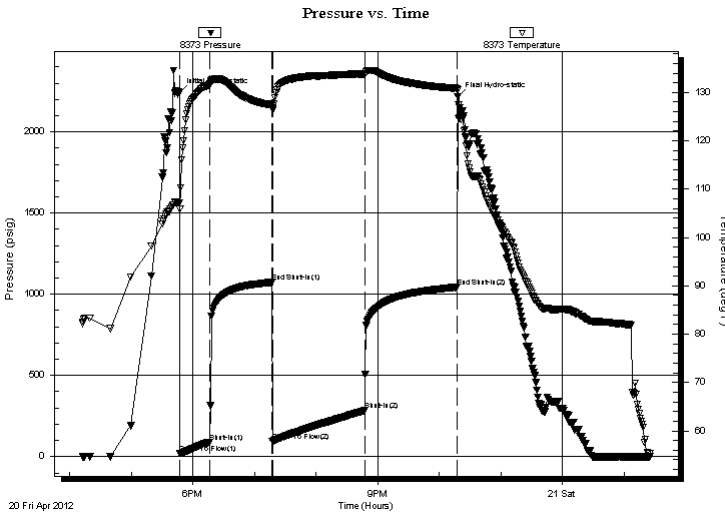
Serial #: 8373

Inside

Press @ Run Depth: 284.52 psig @ 4590.00 ft (KB) Capacity: 8000.00 psig
 Start Date: 2012.04.20 End Date: 2012.04.21 Last Calib.: 2012.04.21
 Start Time: 16:12:39 End Time: 01:25:34 Time On Btm: 2012.04.20 @ 17:47:04
 Time Off Btm: 2012.04.20 @ 22:18:03

TEST COMMENT: IF: BOB in 7 1/2 min.
 IS: Surface blow built to 4 in 60 min.
 FF: BOB in 10 min.
 FS: No return.

PRESSURE SUMMARY



Time (Min.)	Pressure (psig)	Temp (deg F)	Annotation
0	2242.54	107.11	Initial Hydro-static
1	19.60	105.90	Open To Flow (1)
30	91.47	131.65	Shut-In(1)
90	1073.85	127.36	End Shut-In(1)
91	94.75	126.73	Open To Flow (2)
181	284.52	133.74	Shut-In(2)
271	1043.81	130.82	End Shut-In(2)
271	2217.72	130.57	Final Hydro-static

Recovery

Length (ft)	Description	Volume (bbl)
62.00	gocm 20%g 20%o 60%m	0.87
692.00	go 15%g 85%o	9.71
0.00	248 GIP	0.00

* Recovery from multiple tests

Gas Rates

Choke (inches)	Pressure (psig)	Gas Rate (Mcf/d)



**TRILOBITE
TESTING, INC.**

DRILL STEM TEST REPORT

FLUID SUMMARY

Abercrombie Energy

24-19-26 Ness, Ks

10209 W Central Ste 2
Wichita, Ks 67212

Vogel 3-24

Job Ticket: 46502

DST#: 3

ATTN: Mike Maune

Test Start: 2012.04.20 @ 16:12:39

Mud and Cushion Information

Mud Type: Gel Chem

Cushion Type:

Oil API:

39 deg API

Mud Weight: 9.00 lb/gal

Cushion Length:

ft

Water Salinity:

0 ppm

Viscosity: 44.00 sec/qt

Cushion Volume:

bbbl

Water Loss: 7.98 in³

Gas Cushion Type:

Resistivity: 0.00 ohm.m

Gas Cushion Pressure:

psig

Salinity: 2500.00 ppm

Filter Cake: 1.00 inches

Recovery Information

Recovery Table

Length ft	Description	Volume bbl
62.00	gocm 20%g 20%o 60%m	0.870
692.00	go 15%g 85%o	9.707
0.00	248 GIP	0.000

Total Length: 754.00 ft Total Volume: 10.577 bbl

Num Fluid Samples: 0

Num Gas Bombs: 0

Serial #:

Laboratory Name:

Laboratory Location:

Recovery Comments: 37@40=39

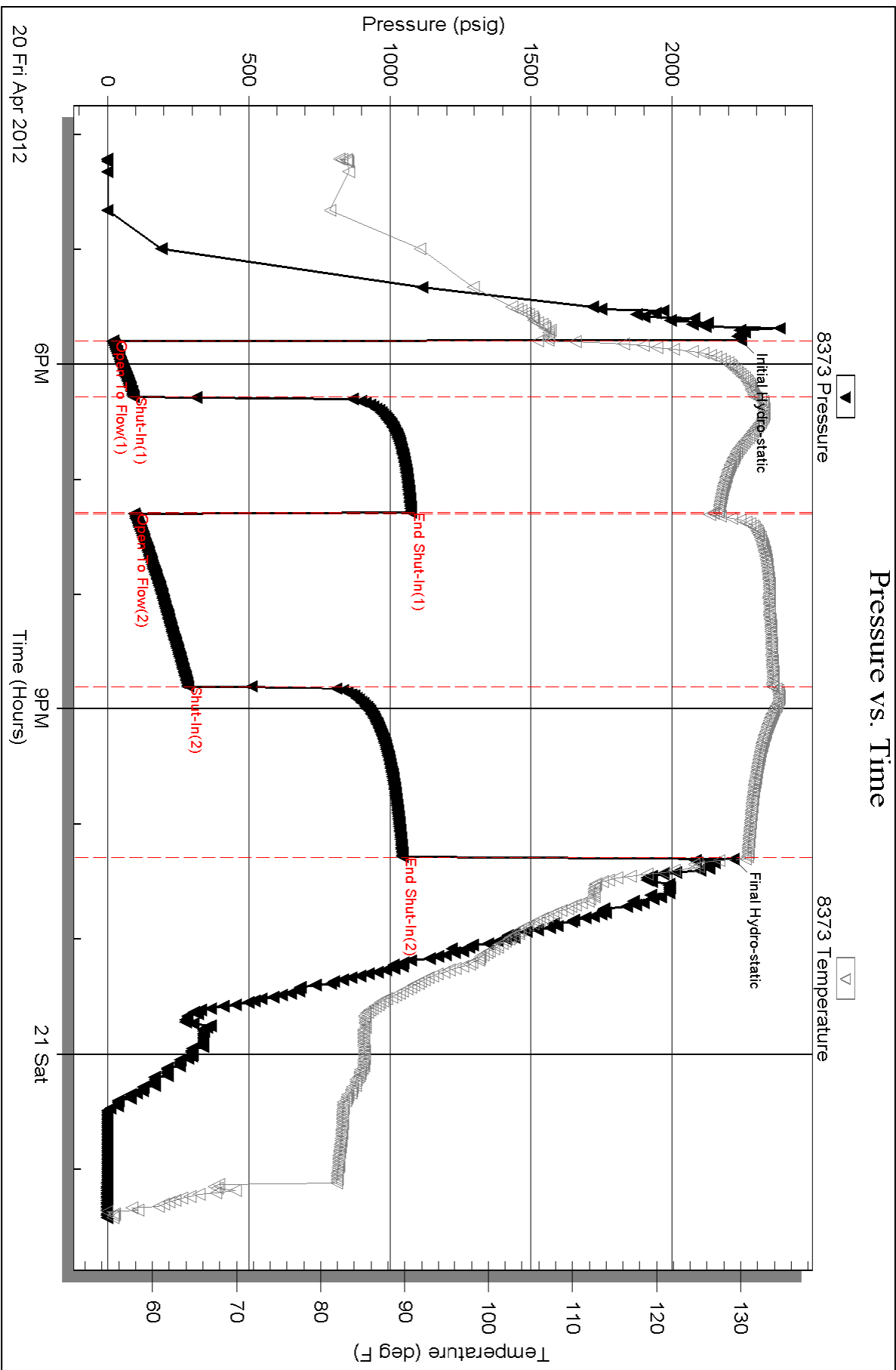
Serial #: 8373

Inside

Abercrombie Energy

Vogel 3-24

DST Test Number: 3



Serial #: 8356

Abercrombie Energy

Vogel 3-24

DST Test Number: 3

