

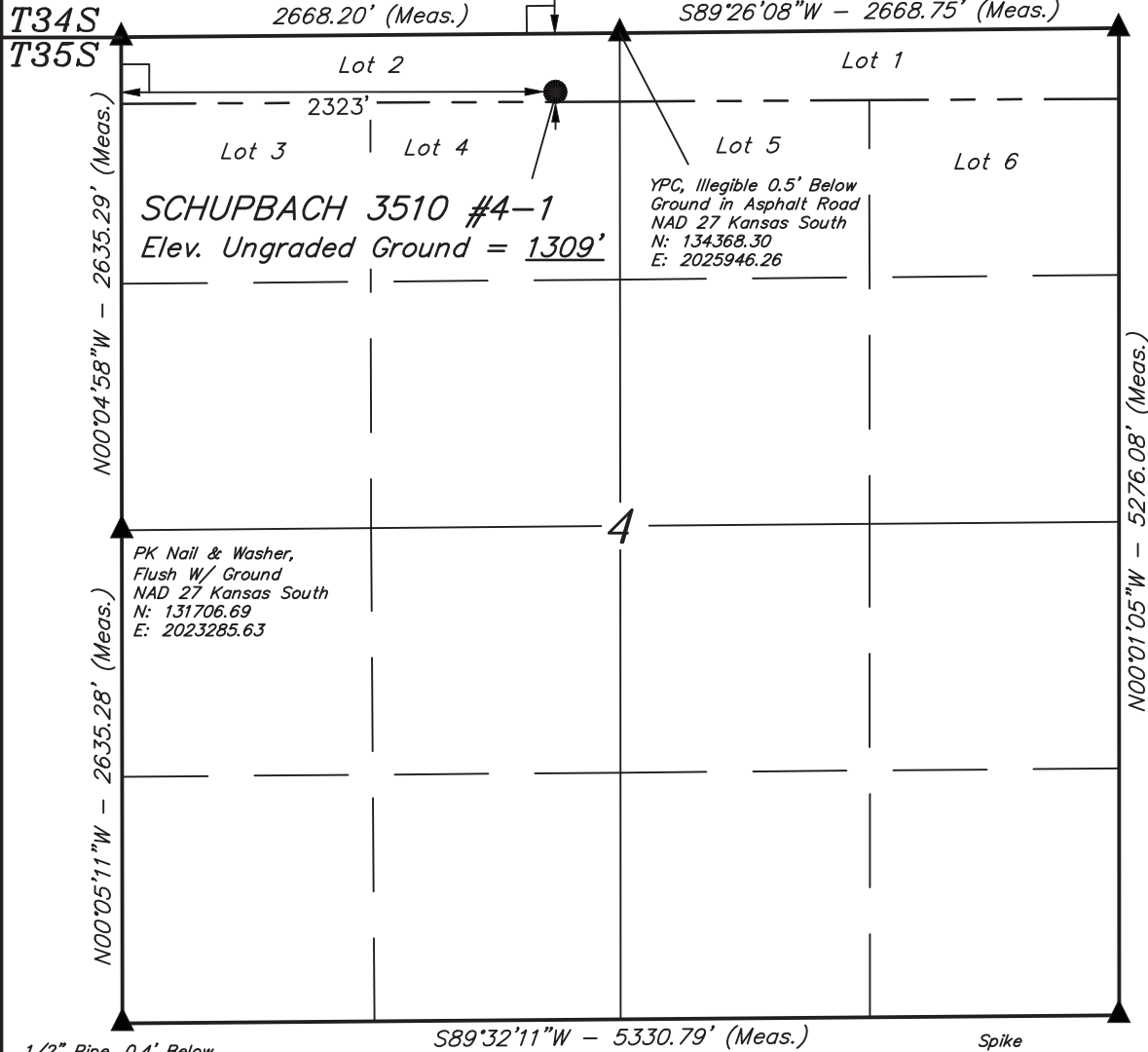
1/2" Pipe 0.5' Below
Ground in Gravel Road
Intersection
NAD 27 Kansas South
N: 134342.10
E: 2023278.06

T35S, R10W, 6th P.M.

Nail & Square Washer 0.2'
Below Ground in Asphalt
Road Intersection
NAD 27 Kansas South
N: 134398.44
E: 2028614.96

SGOMI

Well location, SCHUPBACH 3510 #4-1, located as shown in Lot 2 of Section 4, T35S, R10W, 6th P.M., Barber County, Kansas.

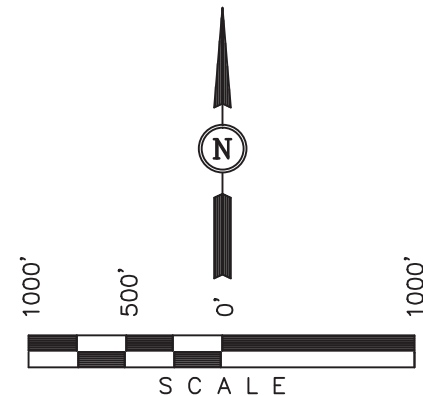


BASIS OF ELEVATION

SPOT ELEVATION LOCATED AT THE SOUTHWEST CORNER OF SECTION 12, T35S, R10W, 6th P.M. TAKEN FROM THE CORWIN, QUADRANGLE, KANSAS, 7.5 MINUTE QUAD (TOPOGRAPHIC MAP) PUBLISHED BY THE UNITED STATES DEPARTMENT OF THE INTERIOR, GEOLOGICAL SURVEY. SAID ELEVATION IS MARKED AS BEING 1274 FEET.

BASIS OF BEARINGS

BASIS OF BEARINGS IS A G.P.S. OBSERVATION.



CERTIFICATE

THIS IS TO CERTIFY THAT THE ABOVE PLAT WAS PREPARED FROM FIELD NOTES OF ACTUAL SURVEYS MADE BY ME OR UNDER MY SUPERVISION AND THAT THE SAME ARE TRUE AND CORRECT TO THE BEST OF MY KNOWLEDGE AND BELIEF.

[Signature]
REGISTERED LAND SURVEYOR
REGISTRATION NO. 1360
STATE OF KANSAS

REVISED: 03-22-12
REVISED: 02-29-12

UINTAH ENGINEERING & LAND SURVEYING
85 SOUTH 200 EAST - VERNAL, UTAH 84078
(435) 789-1017

LEGEND:

- └─┘ = 90° SYMBOL
- = PROPOSED WELL HEAD.
- ▲ = SECTION CORNERS LOCATED.

NAD 83 (#4-1 SURFACE LOCATION)
LATITUDE = 37°02'05.35" (37.034819)
LONGITUDE = 98°24'45.54" (98.412650)
NAD 27 (#4-1 SURFACE LOCATION)
LATITUDE = 37°02'05.26" (37.034794)
LONGITUDE = 98°24'44.28" (98.412300)
STATE PLANE NAD 27 (KANSAS SOUTH)
N: 134054.88 E: 2025601.70

SCALE 1" = 1000'	DATE SURVEYED: 02-15-12	DATE DRAWN: 02-17-12
PARTY D.S. K.S. C.C.	REFERENCES G.L.O. PLAT	
WEATHER COLD	FILE SGOMI	