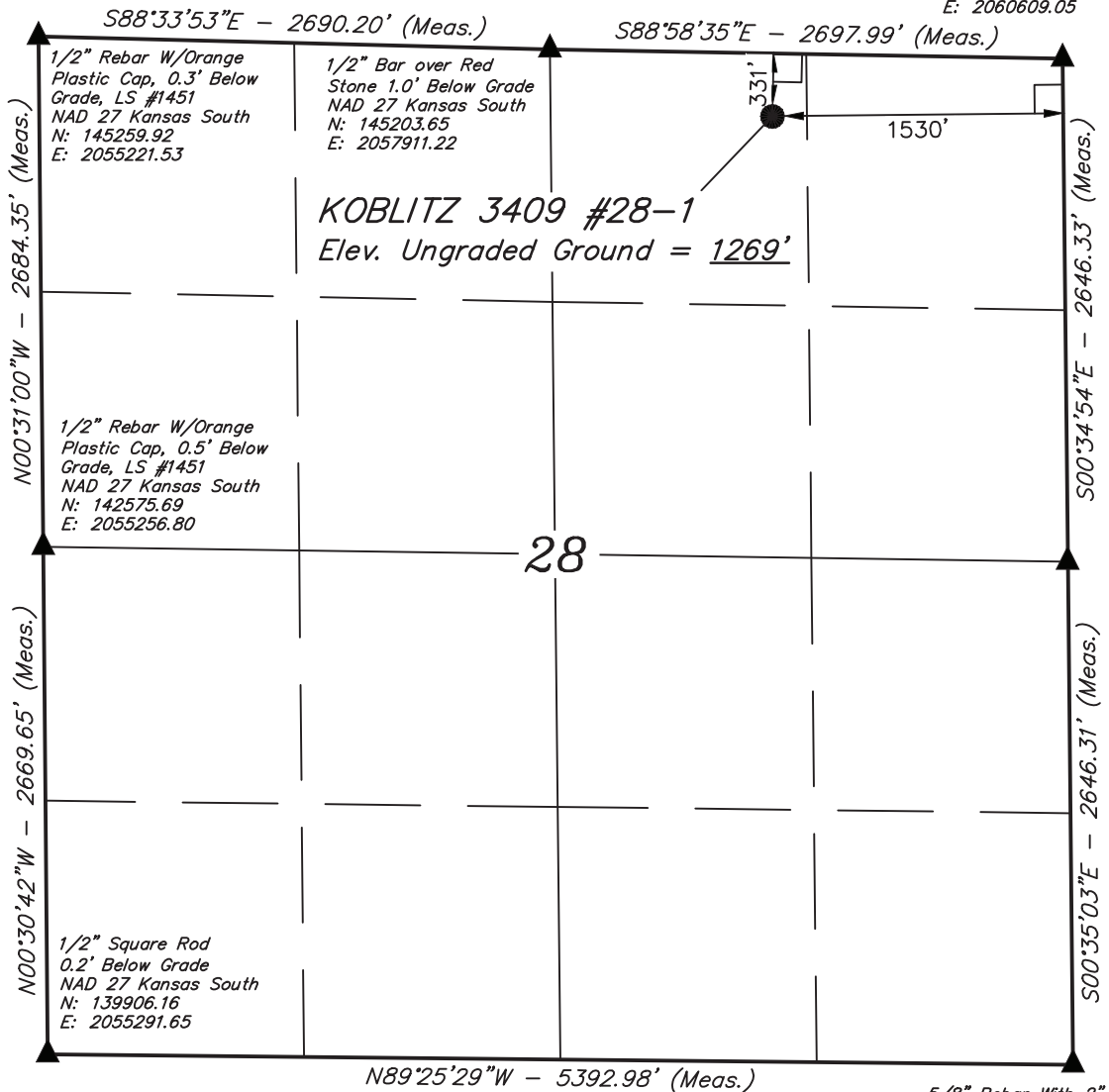


T34S, R9W, 6th P.M.

SGOMI

Nail Flush With Asphalt Surface
 NAD 27 Kansas South
 N: 145166.61
 E: 2060609.05

Well location, KOBLITZ 3409 #28-1, located as shown in the NW 1/4 NE 1/4 of Section 28, T34S, R9W, 6th P.M., Harper County, Kansas.

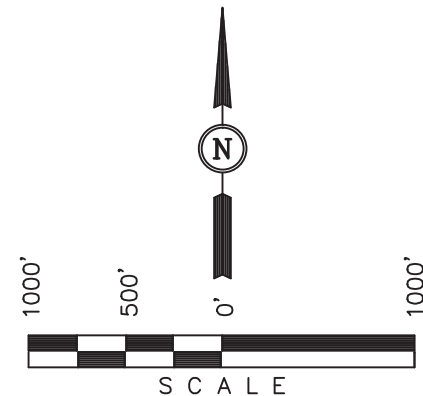


BASIS OF ELEVATION

SPOT ELEVATION LOCATED AT THE NORTHEAST CORNER OF SECTION 22, T33S, R7W, 6th P.M. TAKEN FROM THE ANTHONY, QUADRANGLE, KANSAS, HARPER COUNTY, 7.5 MINUTE QUAD (TOPOGRAPHIC MAP) PUBLISHED BY THE UNITED STATES DEPARTMENT OF THE INTERIOR, GEOLOGICAL SURVEY. SAID ELEVATION IS MARKED AS BEING 1348 FEET.

BASIS OF BEARINGS

BASIS OF BEARINGS IS A G.P.S. OBSERVATION.



CERTIFICATE

THIS IS TO CERTIFY THAT THE ABOVE PLAT WAS PREPARED FROM FIELD NOTES OF ACTUAL SURVEYS MADE BY ME OR UNDER MY SUPERVISION AND THAT THE SAME ARE TRUE AND CORRECT TO THE BEST OF MY KNOWLEDGE AND BELIEF.

Justin D. ...
 REGISTERED LAND SURVEYOR
 REGISTRATION NO. 1451
 STATE OF KANSAS

REVISED: 05-15-12 C.C.

UINTAH ENGINEERING & LAND SURVEYING		
85 SOUTH 200 EAST - VERNAL, UTAH 84078		
(435) 789-1017		
SCALE 1" = 1000'	DATE SURVEYED: 04-12-12	DATE DRAWN: 04-17-12
PARTY L.S. C.M. K.O.	REFERENCES G.L.O. PLAT	
WEATHER WARM	FILE SGOMI	

LEGEND:

- └─┘ = 90° SYMBOL
- = PROPOSED WELL HEAD.
- ▲ = SECTION CORNERS LOCATED.

NAD 83 (#28-1 SURFACE LOCATION)
LATITUDE = 37°03'51.63" (37.064342)
LONGITUDE = 98°17'52.35" (98.297875)
NAD 27 (#28-1 SURFACE LOCATION)
LATITUDE = 37°03'51.54" (37.064317)
LONGITUDE = 98°17'51.09" (98.297525)
STATE PLANE NAD 27 (KANSAS SOUTH)
N: 144856.77 E: 2059083.29

5/8" Rebar With 2" Alum. Cap, 0.4' Below Grade
 NAD 27 Kansas South
 N: 139874.29
 E: 2060684.73