



DRILL STEM TEST REPORT

Prepared For: **Bach Oil Production**

PO Box 723
Alma, NE 68920

ATTN: Bob Peterson

Gaffrey Unit #1

26-1w-19s Phillips,KS

Start Date: 2012.03.02 @ 23:42:00

End Date: 2012.03.03 @ 07:39:15

Job Ticket #: 45611 DST #: 1

Trilobite Testing, Inc
PO Box 362 Hays, KS 67601
ph: 785-625-4778 fax: 785-625-5620

Printed: 2012.03.09 @ 13:50:32



TRILOBITE TESTING, INC.

DRILL STEM TEST REPORT

Bach Oil Production

26-1w-19s Phillips,KS

PO Box 723
Alma, NE 68920

Gaffrey Unit #1

Job Ticket: 45611

DST#: 1

ATTN: Bob Peterson

Test Start: 2012.03.02 @ 23:42:00

GENERAL INFORMATION:

Formation: **LKC "A-G"**

Deviated: No Whipstock: ft (KB)

Time Tool Opened: 02:10:45

Time Test Ended: 07:39:15

Test Type: Conventional Bottom Hole (Initial)

Tester: Kevin Mack

Unit No: 43

Interval: 3378.00 ft (KB) To 3490.00 ft (KB) (TVD)

Reference Elevations: 2170.00 ft (KB)

Total Depth: 3490.00 ft (KB) (TVD)

2165.00 ft (CF)

Hole Diameter: 7.88 inches Hole Condition: Good

KB to GR/CF: 5.00 ft

Serial #: 6799

Inside

Press @ Run Depth: 69.17 psig @ 3379.00 ft (KB)

Capacity: 8000.00 psig

Start Date: 2012.03.02

End Date:

2012.03.03

Last Calib.: 2012.03.03

Start Time: 23:42:05

End Time:

07:39:14

Time On Btm: 2012.03.03 @ 02:10:30

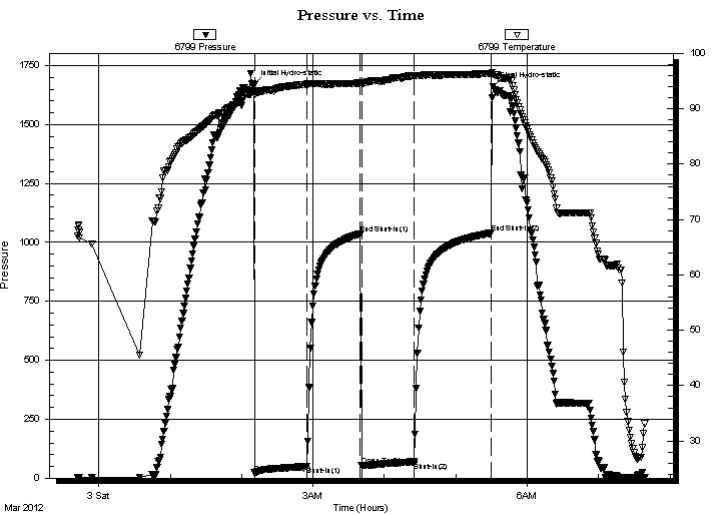
Time Off Btm: 2012.03.03 @ 05:31:30

TEST COMMENT: IF- 1/4" Blow built to 5 1/2"

IS- No Return

FF- Surface blow built to 4"

FS- No Return



PRESSURE SUMMARY

Time (Min.)	Pressure (psig)	Temp (deg F)	Annotation
0	1668.09	93.23	Initial Hydro-static
1	22.39	92.59	Open To Flow (1)
45	50.65	94.45	Shut-In(1)
90	1037.03	94.66	End Shut-In(1)
91	53.17	94.51	Open To Flow (2)
135	69.17	96.00	Shut-In(2)
200	1039.97	96.34	End Shut-In(2)
201	1661.65	96.17	Final Hydro-static

Recovery

Length (ft)	Description	Volume (bbl)
90.00	OSM 100M (oil spots)	0.99

Gas Rates

	Choke (inches)	Pressure (psig)	Gas Rate (Mcf/d)



**TRILOBITE
TESTING, INC.**

DRILL STEM TEST REPORT

TOOL DIAGRAM

Bach Oil Production

26-1w-19s Phillips,KS

PO Box 723
Alma, NE 68920

Gaffrey Unit #1

Job Ticket: 45611

DST#: 1

ATTN: Bob Peterson

Test Start: 2012.03.02 @ 23:42:00

Tool Information

Drill Pipe:	Length: 3330.00 ft	Diameter: 3.80 inches	Volume: 46.71 bbl	Tool Weight: 2500.00 lb
Heavy Wt. Pipe:	Length: 0.00 ft	Diameter: 0.00 inches	Volume: 0.00 bbl	Weight set on Packer: 25000.00 lb
Drill Collar:	Length: 30.00 ft	Diameter: 2.25 inches	Volume: 0.15 bbl	Weight to Pull Loose: 50000.00 lb
			<u>Total Volume: 46.86 bbl</u>	Tool Chased 0.00 ft
Drill Pipe Above KB:	11.00 ft			String Weight: Initial 45000.00 lb
Depth to Top Packer:	3378.00 ft			Final 45000.00 lb
Depth to Bottom Packer:	ft			
Interval between Packers:	112.00 ft			
Tool Length:	141.00 ft			
Number of Packers:	2	Diameter: 6.75 inches		

Tool Comments:

Tool Description

Length (ft) Serial No. Position Depth (ft) Accum. Lengths

Tool Description	Length (ft)	Serial No.	Position	Depth (ft)	Accum. Lengths
Change Over Sub	1.00			3350.00	
Shut In Tool	5.00			3355.00	
Hydraulic tool	5.00			3360.00	
Jars	5.00			3365.00	
Safety Joint	3.00			3368.00	
Packer	5.00			3373.00	29.00 Bottom Of Top Packer
Packer	5.00			3378.00	
Stubb	1.00			3379.00	
Recorder	0.00	8648	Inside	3379.00	
Recorder	0.00	6799	Inside	3379.00	
Perforations	9.00			3388.00	
Change Over Sub	1.00			3389.00	
Drill Pipe	95.00			3484.00	
Change Over Sub	1.00			3485.00	
Bullnose	5.00			3490.00	112.00 Bottom Packers & Anchor

Total Tool Length: 141.00



**TRILOBITE
TESTING, INC.**

DRILL STEM TEST REPORT

FLUID SUMMARY

Bach Oil Production

26-1w-19s Phillips,KS

PO Box 723
Alma, NE 68920

Gaffrey Unit #1

Job Ticket: 45611

DST#: 1

ATTN: Bob Peterson

Test Start: 2012.03.02 @ 23:42:00

Mud and Cushion Information

Mud Type: Gel Chem

Cushion Type:

Oil API:

deg API

Mud Weight: 9.00 lb/gal

Cushion Length:

ft

Water Salinity:

ppm

Viscosity: 56.00 sec/qt

Cushion Volume:

bbbl

Water Loss: 6.78 in³

Gas Cushion Type:

Resistivity: 0.00 ohm.m

Gas Cushion Pressure:

psig

Salinity: 800.00 ppm

Filter Cake: 1.00 inches

Recovery Information

Recovery Table

Length ft	Description	Volume bbl
90.00	OSM 100M (oil spots)	0.989

Total Length: 90.00 ft Total Volume: 0.989 bbl

Num Fluid Samples: 0

Num Gas Bombs: 0

Serial #:

Laboratory Name:

Laboratory Location:

Recovery Comments:

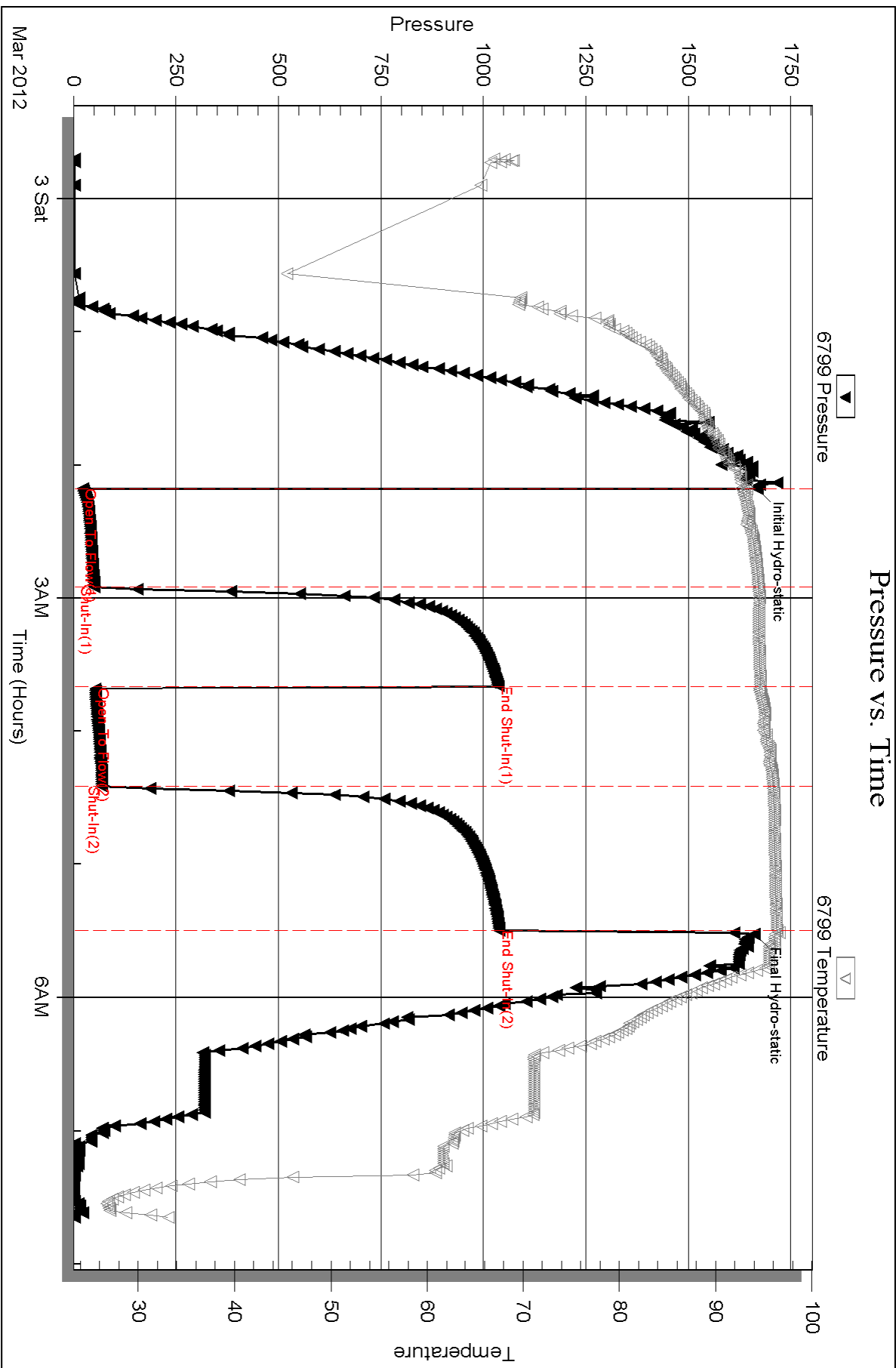
Serial #: 6799

Inside

Bach Oil Production

Gaffrey Unit #1

DST Test Number: 1



Triobite Testing, Inc

Ref. No: 45611

Printed: 2012.03.09 @ 13:50:34

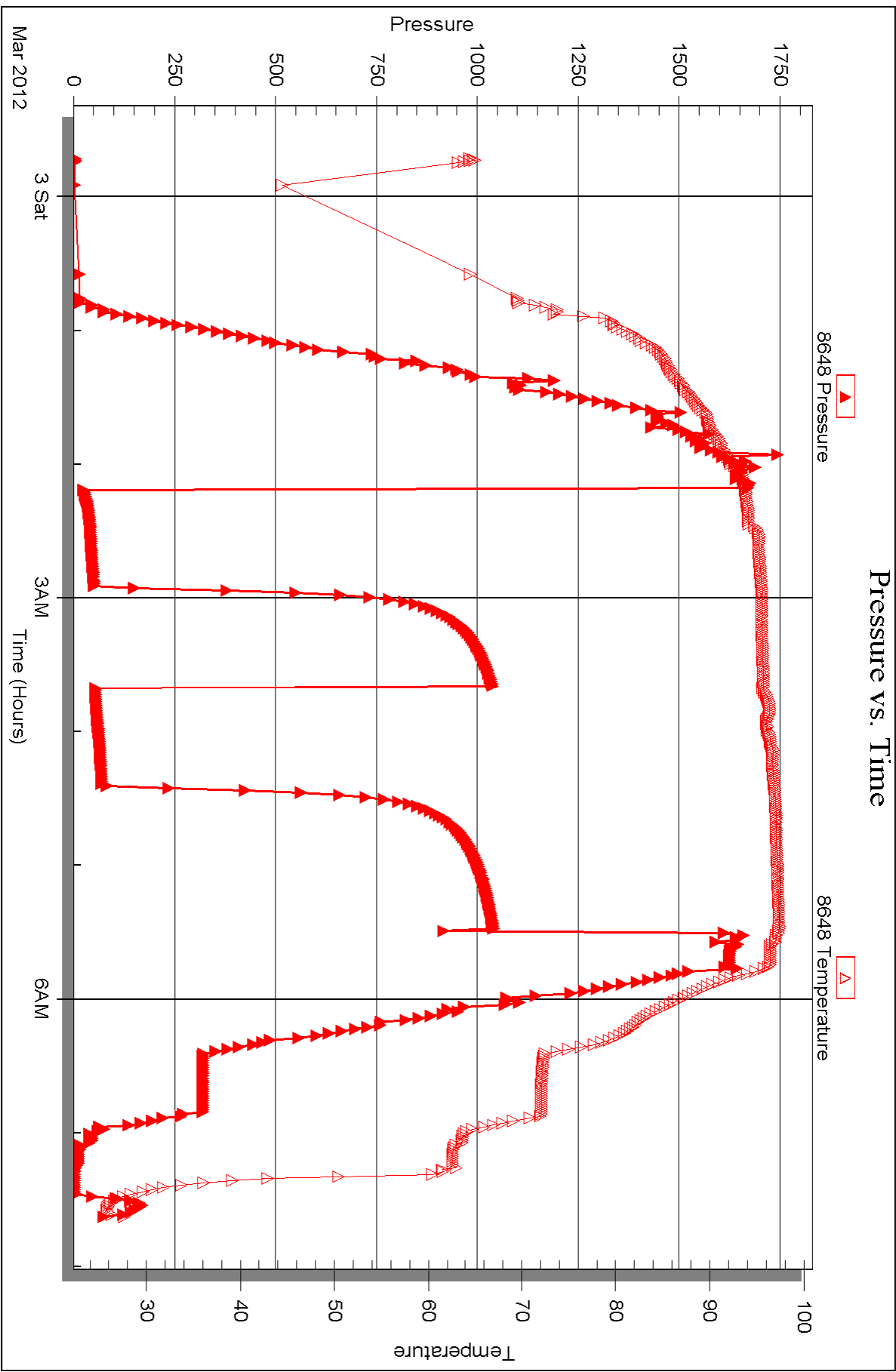
Serial #: 8648

Inside

Bach Oil Production

Gatfrey Unit #1

DST Test Number: 1





DRILL STEM TEST REPORT

Prepared For: **Bach Oil Production**

PO Box 723
Alma, NE 68920

ATTN: Bob Peterson

Gaffrey Unit #1

26-1w-19s Phillips,KS

Start Date: 2012.03.03 @ 14:40:00

End Date: 2012.03.03 @ 21:31:45

Job Ticket #: 45612 DST #: 2

Trilobite Testing, Inc

PO Box 362 Hays, KS 67601

ph: 785-625-4778 fax: 785-625-5620

Printed: 2012.03.09 @ 13:48:55



**TRILOBITE
TESTING, INC.**

DRILL STEM TEST REPORT

Bach Oil Production

26-1w-19s Phillips,KS

PO Box 723
Alma, NE 68920

Gaffrey Unit #1

Job Ticket: 45612

DST#: 2

ATTN: Bob Peterson

Test Start: 2012.03.03 @ 14:40:00

GENERAL INFORMATION:

Formation: **LKC "I"**

Deviated: No Whipstock: ft (KB)

Time Tool Opened: 16:52:45

Time Test Ended: 21:31:45

Test Type: Conventional Bottom Hole (Initial)

Tester: Kevin Mack

Unit No: 43

Interval: 3518.00 ft (KB) To 3545.00 ft (KB) (TVD)

Reference Elevations: 2170.00 ft (KB)

Total Depth: 3545.00 ft (KB) (TVD)

2165.00 ft (CF)

Hole Diameter: 7.88 inches Hole Condition: Good

KB to GR/CF: 5.00 ft

Serial #: 6799

Inside

Press @ Run Depth: 23.66 psig @ 3519.00 ft (KB)

Capacity: 8000.00 psig

Start Date: 2012.03.03

End Date:

2012.03.03

Last Calib.: 2012.03.03

Start Time: 14:40:05

End Time:

21:31:44

Time On Btm: 2012.03.03 @ 16:52:00

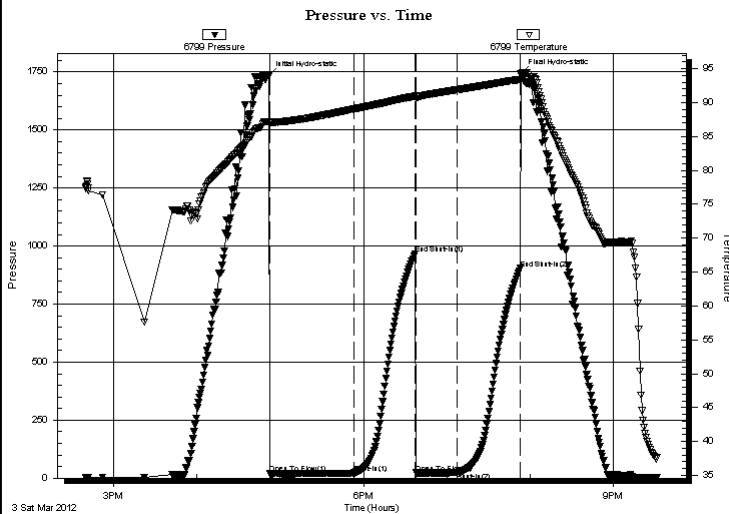
Time Off Btm: 2012.03.03 @ 19:53:15

TEST COMMENT: IF- Surface blow built to 1"

IS- No Return

FF- No Blow

FS- No Return



PRESSURE SUMMARY

Time (Min.)	Pressure (psig)	Temp (deg F)	Annotation
0	1735.77	87.23	Initial Hydro-static
1	18.70	86.97	Open To Flow (1)
61	22.33	89.05	Shut-In(1)
105	965.08	90.95	End Shut-In(1)
106	22.81	90.80	Open To Flow (2)
136	23.66	91.91	Shut-In(2)
181	903.44	93.42	End Shut-In(2)
182	1744.18	94.09	Final Hydro-static

Recovery

Length (ft)	Description	Volume (bbl)
10.00	MCO 90o 10M	0.05

Gas Rates

	Choke (inches)	Pressure (psig)	Gas Rate (Mcf/d)



**TRILOBITE
TESTING, INC.**

DRILL STEM TEST REPORT

TOOL DIAGRAM

Bach Oil Production

26-1w-19s Phillips,KS

PO Box 723
Alma, NE 68920

Gaffrey Unit #1

Job Ticket: 45612

DST#: 2

ATTN: Bob Peterson

Test Start: 2012.03.03 @ 14:40:00

Tool Information

Drill Pipe:	Length: 3489.00 ft	Diameter: 3.80 inches	Volume: 48.94 bbl	Tool Weight: 2500.00 lb
Heavy Wt. Pipe:	Length: 0.00 ft	Diameter: 0.00 inches	Volume: 0.00 bbl	Weight set on Packer: 25000.00 lb
Drill Collar:	Length: 30.00 ft	Diameter: 2.25 inches	Volume: 0.15 bbl	Weight to Pull Loose: 50000.00 lb
			<u>Total Volume: 49.09 bbl</u>	Tool Chased ft
Drill Pipe Above KB:	30.00 ft			String Weight: Initial 48000.00 lb
Depth to Top Packer:	3518.00 ft			Final 48000.00 lb
Depth to Bottom Packer:	ft			
Interval between Packers:	27.00 ft			
Tool Length:	56.00 ft			
Number of Packers:	2	Diameter: 6.75 inches		

Tool Comments:

Tool Description	Length (ft)	Serial No.	Position	Depth (ft)	Accum. Lengths
------------------	-------------	------------	----------	------------	----------------

Change Over Sub	1.00			3490.00	
Shut In Tool	5.00			3495.00	
Hydraulic tool	5.00			3500.00	
Jars	5.00			3505.00	
Safety Joint	3.00			3508.00	
Packer	5.00			3513.00	29.00 Bottom Of Top Packer
Packer	5.00			3518.00	
Stubb	1.00			3519.00	
Recorder	0.00	8648	Inside	3519.00	
Recorder	0.00	6799	Inside	3519.00	
Perforations	21.00			3540.00	
Bullnose	5.00			3545.00	27.00 Bottom Packers & Anchor

Total Tool Length: 56.00



TRILOBITE
TESTING, INC.

DRILL STEM TEST REPORT

FLUID SUMMARY

Bach Oil Production

26-1w-19s Phillips,KS

PO Box 723
Alma, NE 68920

Gaffrey Unit #1

Job Ticket: 45612

DST#: 2

ATTN: Bob Peterson

Test Start: 2012.03.03 @ 14:40:00

Mud and Cushion Information

Mud Type: Gel Chem

Cushion Type:

Oil API:

deg API

Mud Weight: 9.00 lb/gal

Cushion Length:

ft

Water Salinity:

ppm

Viscosity: 44.00 sec/qt

Cushion Volume:

bbbl

Water Loss: 7.97 in³

Gas Cushion Type:

Resistivity: 0.00 ohm.m

Gas Cushion Pressure:

psig

Salinity: 1000.00 ppm

Filter Cake: 1.00 inches

Recovery Information

Recovery Table

Length ft	Description	Volume bbl
10.00	MCO 90o 10M	0.049

Total Length: 10.00 ft Total Volume: 0.049 bbl

Num Fluid Samples: 0

Num Gas Bombs: 0

Serial #:

Laboratory Name:

Laboratory Location:

Recovery Comments:

Serial #: 6799

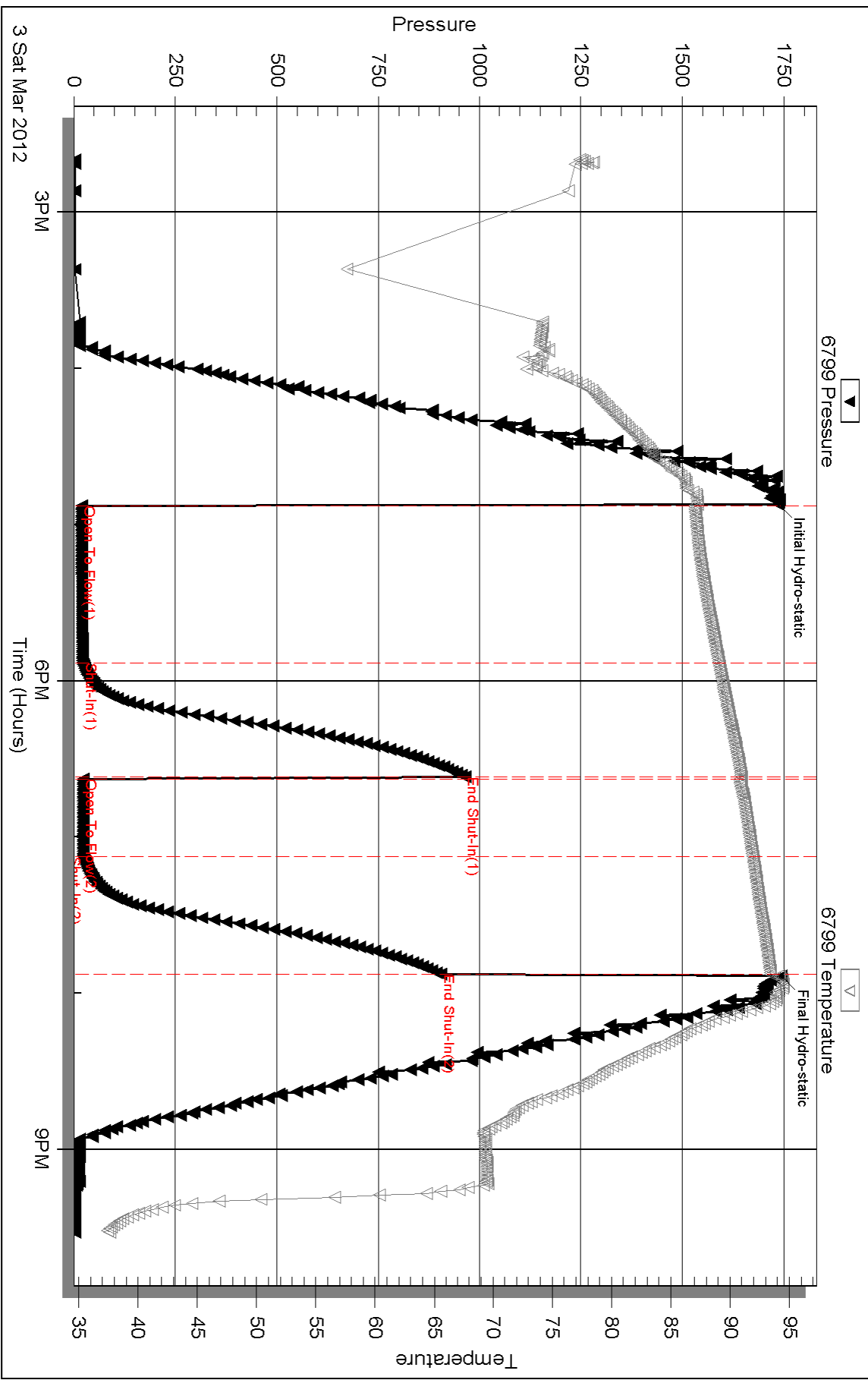
Inside

Bach Oil Production

Gaffrey Unit #1

DST Test Number: 2

Pressure vs. Time



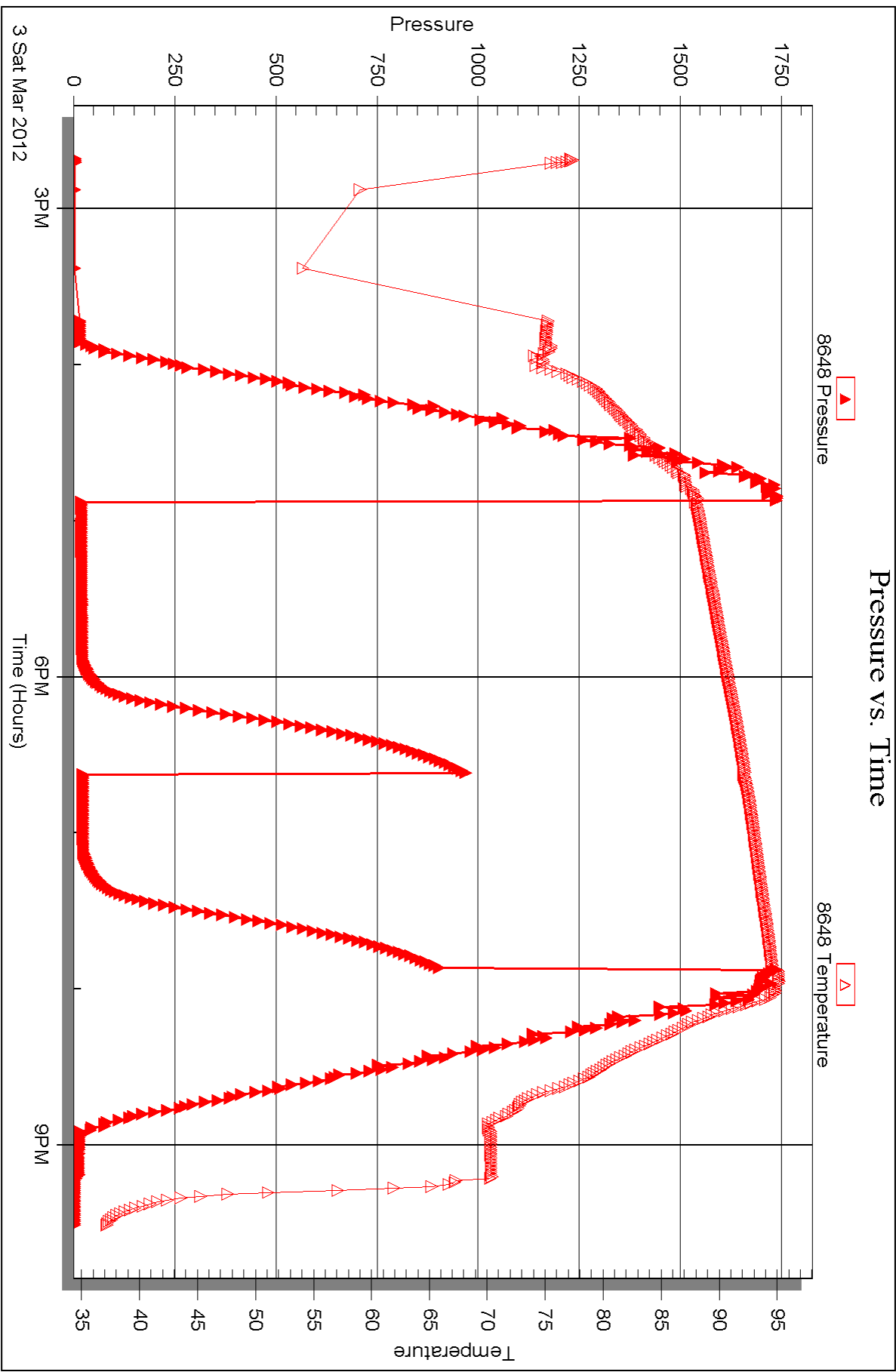
Serial #: 8648

Inside

Bach Oil Production

Gaffrey Unit #1

DST Test Number: 2





DRILL STEM TEST REPORT

Prepared For: **Bach Oil Production**

PO Box 723
Alma, NE 68920

ATTN: Bob Peterson

Gaffrey Unit #1

26-1w-19s Phillips,KS

Start Date: 2012.03.04 @ 09:38:00

End Date: 2012.03.04 @ 16:45:15

Job Ticket #: 45613 DST #: 3

Trilobite Testing, Inc
PO Box 362 Hays, KS 67601
ph: 785-625-4778 fax: 785-625-5620

Printed: 2012.03.09 @ 13:48:10



TRILOBITE TESTING, INC.

DRILL STEM TEST REPORT

Bach Oil Production

26-1w-19s Phillips,KS

PO Box 723
Alma, NE 68920

Gaffrey Unit #1

Job Ticket: 45613

DST#: 3

ATTN: Bob Peterson

Test Start: 2012.03.04 @ 09:38:00

GENERAL INFORMATION:

Formation: **Marmaton**

Deviated: No Whipstock: ft (KB)

Time Tool Opened: 11:46:15

Time Test Ended: 16:45:15

Test Type: Conventional Bottom Hole (Initial)

Tester: Kevin Mack

Unit No: 43

Interval: 3585.00 ft (KB) To 3695.00 ft (KB) (TVD)

Reference Elevations: 2170.00 ft (KB)

Total Depth: 3695.00 ft (KB) (TVD)

2165.00 ft (CF)

Hole Diameter: 7.88 inches Hole Condition: Good

KB to GR/CF: 5.00 ft

Serial #: 6799 Inside

Press @ Run Depth: 77.01 psig @ 3586.00 ft (KB)

Capacity: 8000.00 psig

Start Date: 2012.03.04

End Date:

2012.03.04

Last Calib.: 2012.03.04

Start Time: 09:38:05

End Time:

16:45:14

Time On Btm: 2012.03.04 @ 11:45:30

Time Off Btm: 2012.03.04 @ 15:04:15

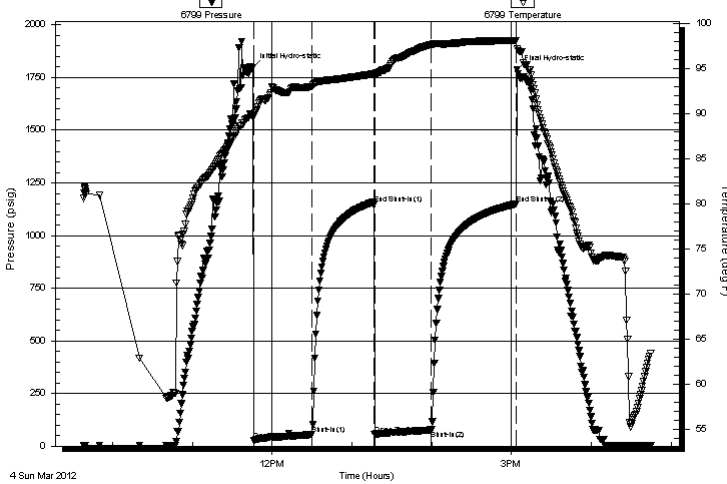
TEST COMMENT: IF- 1/2" Blow built to 6 1/2"

IS- No Return

FF- Surface blow built to 5 1/4"

FS- No Return

Pressure vs. Time



PRESSURE SUMMARY

Time (Min.)	Pressure (psig)	Temp (deg F)	Annotation
0	1797.52	89.86	Initial Hydro-static
1	26.97	89.76	Open To Flow (1)
45	54.85	93.03	Shut-In(1)
91	1148.31	94.43	End Shut-In(1)
92	57.65	94.41	Open To Flow (2)
135	77.01	97.70	Shut-In(2)
198	1150.54	98.16	End Shut-In(2)
199	1788.50	97.21	Final Hydro-static

Recovery

Length (ft)	Description	Volume (bbl)
60.00	MW 40M 60W	0.57
60.00	Mud 100M	0.84

Gas Rates

	Choke (inches)	Pressure (psig)	Gas Rate (Mcf/d)



**TRILOBITE
TESTING, INC.**

DRILL STEM TEST REPORT

TOOL DIAGRAM

Bach Oil Production

26-1w-19s Phillips,KS

PO Box 723
Alma, NE 68920

Gaffrey Unit #1

Job Ticket: 45613

DST#: 3

ATTN: Bob Peterson

Test Start: 2012.03.04 @ 09:38:00

Tool Information

Drill Pipe:	Length: 3548.00 ft	Diameter: 3.80 inches	Volume: 49.77 bbl	Tool Weight: 2500.00 lb
Heavy Wt. Pipe:	Length: 0.00 ft	Diameter: 0.00 inches	Volume: 0.00 bbl	Weight set on Packer: 25000.00 lb
Drill Collar:	Length: 30.00 ft	Diameter: 2.23 inches	Volume: 0.14 bbl	Weight to Pull Loose: 55000.00 lb
			<u>Total Volume: 49.91 bbl</u>	Tool Chased 0.00 ft
Drill Pipe Above KB:	22.00 ft			String Weight: Initial 50000.00 lb
Depth to Top Packer:	3585.00 ft			Final 52000.00 lb
Depth to Bottom Packer:	ft			
Interval between Packers:	110.00 ft			
Tool Length:	139.00 ft			
Number of Packers:	2	Diameter: 6.75 inches		

Tool Comments:

Tool Description

Tool Description	Length (ft)	Serial No.	Position	Depth (ft)	Accum. Lengths
Change Over Sub	1.00			3557.00	
Shut In Tool	5.00			3562.00	
Hydraulic tool	5.00			3567.00	
Jars	5.00			3572.00	
Safety Joint	3.00			3575.00	
Packer	5.00			3580.00	29.00 Bottom Of Top Packer
Packer	5.00			3585.00	
Stubb	1.00			3586.00	
Recorder	0.00	8648	Inside	3586.00	
Recorder	0.00	6799	Inside	3586.00	
Perforations	7.00			3593.00	
Change Over Sub	1.00			3594.00	
Drill Pipe	95.00			3689.00	
Change Over Sub	1.00			3690.00	
Bullnose	5.00			3695.00	110.00 Bottom Packers & Anchor

Total Tool Length: 139.00



**TRILOBITE
TESTING, INC.**

DRILL STEM TEST REPORT

FLUID SUMMARY

Bach Oil Production

26-1w-19s Phillips,KS

PO Box 723
Alma, NE 68920

Gaffrey Unit #1

Job Ticket: 45613

DST#: 3

ATTN: Bob Peterson

Test Start: 2012.03.04 @ 09:38:00

Mud and Cushion Information

Mud Type: Gel Chem

Cushion Type:

Oil API:

deg API

Mud Weight: 9.00 lb/gal

Cushion Length:

ft

Water Salinity:

15000 ppm

Viscosity: 44.00 sec/qt

Cushion Volume:

bbbl

Water Loss: 7.98 in³

Gas Cushion Type:

Resistivity: 0.00 ohm.m

Gas Cushion Pressure:

psig

Salinity: 1000.00 ppm

Filter Cake: 1.00 inches

Recovery Information

Recovery Table

Length ft	Description	Volume bbbl
60.00	MW 40M 60W	0.566
60.00	Mud 100M	0.842

Total Length: 120.00 ft Total Volume: 1.408 bbl

Num Fluid Samples: 0

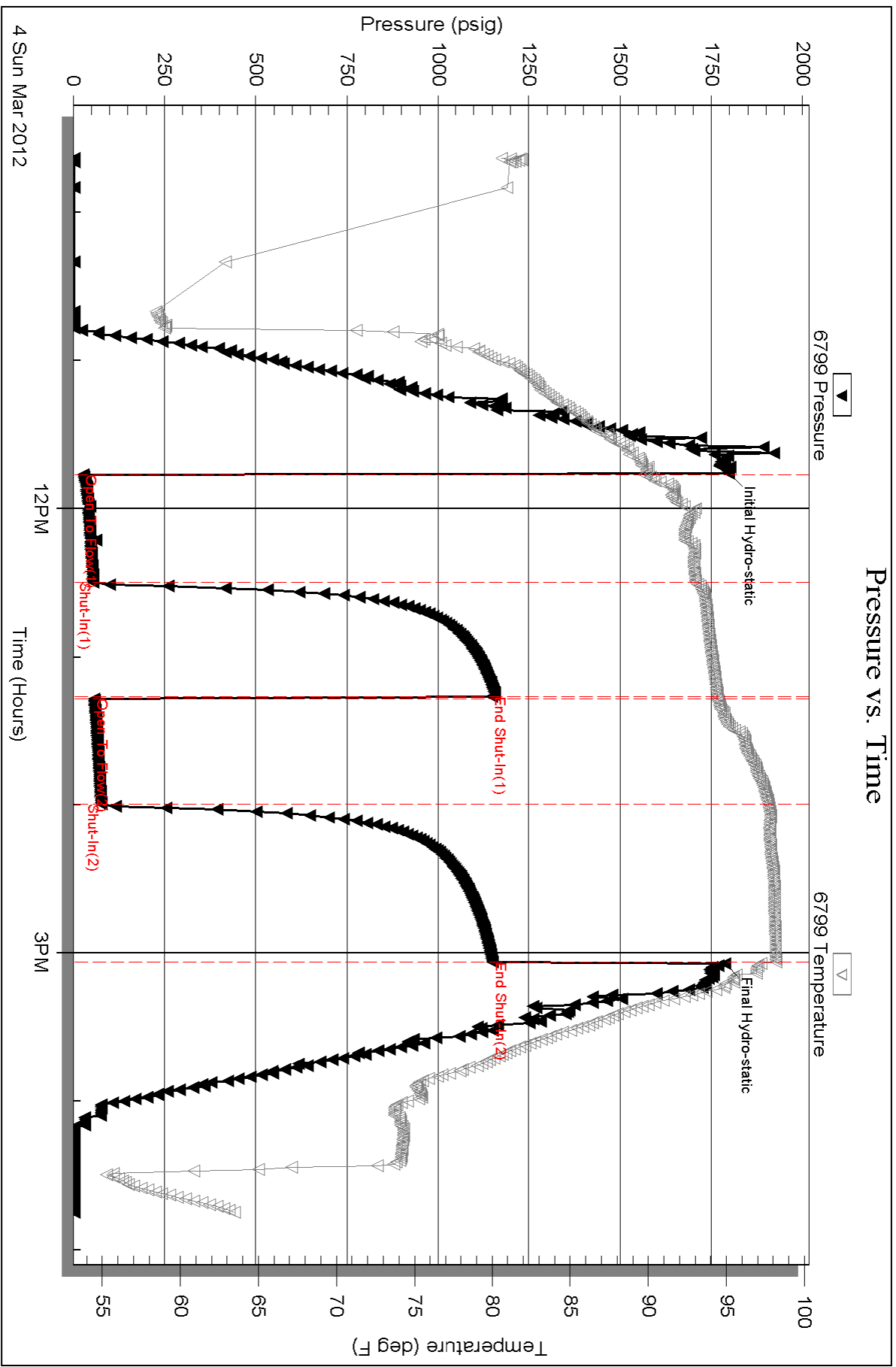
Num Gas Bombs: 0

Serial #:

Laboratory Name:

Laboratory Location:

Recovery Comments: RW .48@67 de. = 15000 ppm



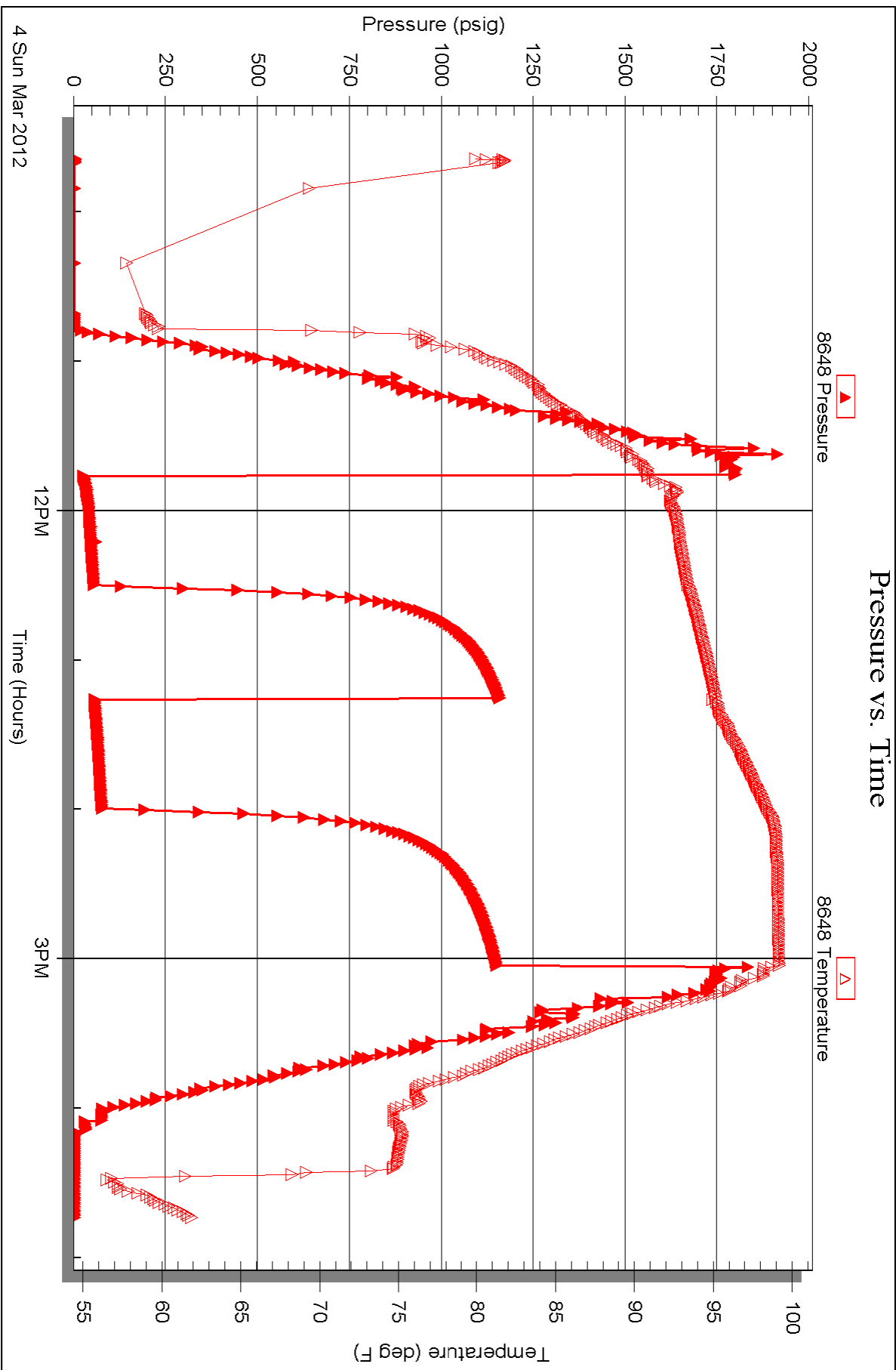
Serial #: 8648

Inside

Bach Oil Production

Garfrey Unit #1

DST Test Number: 3





TRILOBITE TESTING INC.

P.O. Box 1733 • Hays, Kansas 67601

RECEIVED
MAR 07 2012

Test Ticket

NO. 45611

BY: _____

Well Name & No. Gaffrey Unit #1 Test No. 1 Date 3-2-12
 Company Bach Oil Production Elevation 2170 KB 2165 GL
 Address PO Box 723 Alma, NE 68920
 Co. Rep / Geo. Bob P. Rig Murfin #16
 Location: Sec. 26 Twp. 1W Rge. 19 Co. Phillips State KS

Interval Tested 3378-3490 Zone Tested LKC "A-6"
 Anchor Length 112 Drill Pipe Run 3330 Mud Wt. 8.8
 Top Packer Depth 3374 Drill Collars Run 30' Vis 56
 Bottom Packer Depth 3378 Wt. Pipe Run Ø WL 6.8
 Total Depth 3390 Chlorides 800 ppm System LCM 3#
 Blow Description IF - 1/4" Blow built to 5 1/2"
IS - NO Return
FF - Surface Blow built to 4"
FS - NO Return

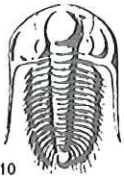
Rec	Feet of	%gas	spots	%oil	%water	%mud
90	OSM				100	
		%gas		%oil	%water	%mud
		%gas		%oil	%water	%mud
		%gas		%oil	%water	%mud

Rec Total 90 BHT 96 Gravity - API RW - @ - °F Chlorides - ppm

(A) Initial Hydrostatic <u>1668</u>	<input checked="" type="checkbox"/> Test <u>1125'</u>	T-On Location <u>11:30 PM</u>
(B) First Initial Flow <u>22</u>	<input checked="" type="checkbox"/> Jars <u>250'</u>	T-Started <u>11:42 PM</u>
(C) First Final Flow <u>50</u>	<input checked="" type="checkbox"/> Safety Joint <u>75'</u>	T-Open <u>2:10 AM</u>
(D) Initial Shut-In <u>1037</u>	<input checked="" type="checkbox"/> Circ Sub <u>NIL</u>	T-Pulled <u>6:25 AM</u>
(E) Second Initial Flow <u>53</u>	<input type="checkbox"/> Hourly Standby	T-Out <u>7:38 AM</u>
(F) Second Final Flow <u>69</u>	<input checked="" type="checkbox"/> Mileage <u>132 RT 184.80</u>	Comments _____
(G) Final Shut-In <u>1039</u>	<input type="checkbox"/> Sampler	<input type="checkbox"/> Ruined Shale Packer
(H) Final Hydrostatic <u>1661</u>	<input type="checkbox"/> Straddle	<input type="checkbox"/> Ruined Packer
Initial Open <u>45</u>	<input type="checkbox"/> Shale Packer	<input type="checkbox"/> Extra Copies
Initial Shut-In <u>45</u>	<input type="checkbox"/> Extra Packer	Sub Total <u>Ø</u>
Final Flow <u>45</u>	<input type="checkbox"/> Extra Recorder	Total <u>1634.80</u>
Final Shut-In <u>60</u>	<input type="checkbox"/> Day Standby	MP/DST Disc't _____
	<input type="checkbox"/> Accessibility	
	Sub Total <u>1634.80</u>	

Approved By _____ Our Representative [Signature]

TriLOBITE TESTING Inc. shall not be liable for damaged of any kind of the property or personnel of the one for whom a test is made, or for any loss suffered or sustained, directly or indirectly, through the use of its equipment, or its statements or opinion concerning the results of any test, tools lost or damaged in the hole shall be paid for at cost by the party for whom the test is made.



TRILOBITE TESTING INC.

P.O. Box 1733 • Hays, Kansas 67601

RECEIVED Test Ticket

MAR 07 2012

NO. 45612

4/10

BY: _____

Well Name & No. Gaffney Unit #1 Test No. 2 Date 3-3-12
 Company Buch Oil Production Elevation 2170 KB 2165 GL
 Address PO Box 723 Alma, NE 68920
 Co. Rep / Geo. Bob P. Rig Muffin #16
 Location: Sec. 26 Twp. 1W Rge. 19 Co. Phillips State KS

Interval Tested 3518-3545 Zone Tested LKC "I"
 Anchor Length 27' Drill Pipe Run _____ Mud Wt. 9.1
 Top Packer Depth 3514 Drill Collars Run 30' Vis 44
 Bottom Packer Depth 3518 Wt. Pipe Run Ø WL 8.0
 Total Depth 3545 Chlorides 1,000 ppm System LCM 2.5#
 Blow Description IF - Weak surface blow built to 1"
IS - No Return
FF - No Blow
FS - NO Return

Rec	Feet of	%gas	%oil	%water	%mud
<u>10</u>	<u>MCO</u>	<u>90</u>		<u>10</u>	
Rec	Feet of	%gas	%oil	%water	%mud
Rec	Feet of	%gas	%oil	%water	%mud
Rec	Feet of	%gas	%oil	%water	%mud
Rec	Feet of	%gas	%oil	%water	%mud

Rec Total 10 BHT 93 Gravity - API RW - @ - °F Chlorides - ppm

(A) Initial Hydrostatic <u>1735</u>	<input checked="" type="checkbox"/> Test <u>1125</u>	T-On Location <u>2:12 PM</u>
(B) First Initial Flow <u>18</u>	<input checked="" type="checkbox"/> Jars <u>250</u>	T-Started <u>2:40 PM</u>
(C) First Final Flow <u>22</u>	<input checked="" type="checkbox"/> Safety Joint <u>75</u>	T-Open <u>4:52 PM</u>
(D) Initial Shut-In <u>965</u>	<input checked="" type="checkbox"/> Circ Sub <u>NIC</u>	T-Pulled <u>7:52 PM</u>
(E) Second Initial Flow <u>22</u>	<input type="checkbox"/> Hourly Standby _____	T-Out <u>9:30 PM</u>
(F) Second Final Flow <u>23</u>	<input checked="" type="checkbox"/> Mileage <u>132 RT 184.80</u>	Comments _____
(G) Final Shut-In <u>963</u>	<input type="checkbox"/> Sampler _____	
(H) Final Hydrostatic <u>1744</u>	<input type="checkbox"/> Straddle _____	<input type="checkbox"/> Ruined Shale Packer _____
Initial Open <u>4560</u>	<input type="checkbox"/> Shale Packer _____	<input type="checkbox"/> Ruined Packer _____
Initial Shut-In <u>45</u>	<input type="checkbox"/> Extra Packer _____	<input type="checkbox"/> Extra Copies _____
Final Flow <u>30</u>	<input type="checkbox"/> Extra Recorder _____	Sub Total <u>Ø</u>
Final Shut-In <u>45</u>	<input type="checkbox"/> Day Standby _____	Total <u>11634.80</u>
	<input type="checkbox"/> Accessibility _____	MP/DST Disc't _____
	Sub Total <u>11634.80</u>	

Approved By _____ Our Representative [Signature]

TriLOBite Testing Inc. shall not be liable for damaged of any kind of the property or personnel of the one for whom a test is made, or for any loss suffered or sustained, directly or indirectly, through the use of its equipment, or its statements or opinion concerning the results of any test, tools lost or damaged in the hole shall be paid for at cost by the party for whom the test is made.



TRILOBITE TESTING INC.

P.O. Box 1733 • Hays, Kansas 67601

RECEIVED Test Ticket

MAR 07 2012

NO. 45613

4/10

BY: _____

Well Name & No. Gaffrey Unit #1 Test No. 3 Date 3-4-12
 Company Buck Oil Production Elevation 2170 KB 2165 GL
 Address PO Box 723 Almay NE 68920
 Co. Rep / Geo. Bob P. Rig Murphy #16
 Location: Sec. 26 Twp. 1w Rge. 19 Co. Phillips State KS

Interval Tested 3585-3695 Zone Tested Marm.
 Anchor Length 110' Drill Pipe Run 3548' Mud Wt. 9.1
 Top Packer Depth 3581 Drill Collars Run 30' Vis 44
 Bottom Packer Depth 3585 Wt. Pipe Run Ø WL 8.0
 Total Depth 3695 Chlorides 1,000 ppm System LCM 2.5-#
 Blow Description IF - 1/2" Blow built to 6 1/2"
IS - No Return
FF - Surface blow built to 5 1/4"
FS - No Return

Rec	Feet of	%gas	%oil	%water	%mud
<u>60</u>	<u>Mud</u>			<u>100</u>	
<u>60</u>	<u>MW</u>		<u>60</u>	<u>40</u>	
Rec	Feet of	%gas	%oil	%water	%mud
Rec	Feet of	%gas	%oil	%water	%mud
Rec	Feet of	%gas	%oil	%water	%mud

Rec Total 120 BHT 98 Gravity — API RW .48 @ 67 °F Chlorides 15,000 ppm
 (A) Initial Hydrostatic 1797 Test 1125 T-On Location 7:40 AM
 (B) First Initial Flow 26 Jars 250 T-Started 9:38 AM
 (C) First Final Flow 54 Safety Joint 75' T-Open 11:45 AM
 (D) Initial Shut-In 1148 Circ Sub N/C T-Pulled 3:00 PM
 (E) Second Initial Flow 57 Hourly Standby _____ T-Out 4:45 PM
 (F) Second Final Flow 77 Mileage 132 RT 184.80 Comments _____
 (G) Final Shut-In 1150 Sampler _____
 (H) Final Hydrostatic 1788 Straddle _____ Ruined Shale Packer _____
 Shale Packer _____ Ruined Packer _____
 Extra Packer _____ Extra Copies _____
 Initial Open 45 Extra Recorder _____ Sub Total Ø
 Initial Shut-In 45 Day Standby _____ Total 11034.80
 Final Flow 45 Accessibility _____ MP/DST Disc't _____
 Final Shut-In 60 Sub Total 11034.80

Approved By _____ Our Representative

Trilobite Testing Inc. shall not be liable for damaged of any kind of the property or personnel of the one for whom a test is made, or for any loss suffered or sustained, directly or indirectly, through the use of its equipment, or its statements or opinion concerning the results of any test, tools lost or damaged in the hole shall be paid for at cost by the party for whom the test is made.