

KEVIN L. KESSLER
CONSULTING PETROLEUM GEOLOGIST
 (316) 522-7338

OPERATOR : MULL DRILLING COMPANY INC.
LEASE : STEFFENS WELL # : 2 - 25
LOCATION : 620' FNL & 520' FEL
SEC: 25 TWP : 15 S RGE : 27 W
COUNTY : GOVE STATE : KANSAS

ELEVATION
KB : 2469
GL : 2460
MEASUREMENTS FROM
KB

CONTRACTOR : DUKE RIG # 4
COMM: 02 / 29 / 2012 **COMP : 03 / 09 / 2012**
RTD : 4450 **LOG TD : 4453**
SAMPLES SAVED FROM : 3600 **TO: RTD**
GEOLOGICAL SUPERVISION FROM : 3600 **TO : RTD**
MUD UP : 3500 **TYPE MUD : CHEMICAL**

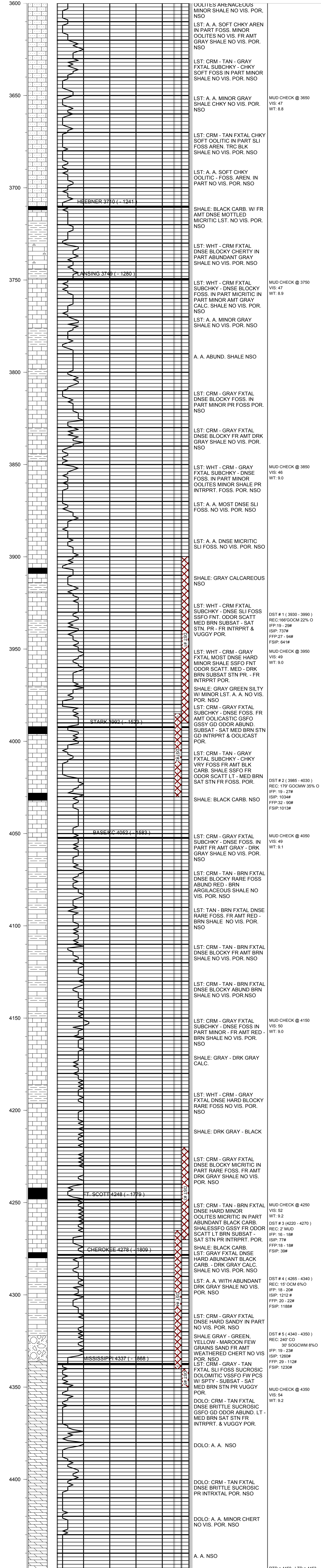
CASING RECORD
SURFACE :
8 5/8" @ 237'
PRODUCTION :
5 1/2" @ 4450

ELECTRICAL SURVEYS:
DIL
CNL / CDL
MICRO
SONIC

FORMATION	TOP	LOG	DATUM	TOP	SAMPLE	DATUM	STRUCT. COMP.
HEEBNER	3710		- 1241	3710		- 1241	+ 01
LANSING	3749		- 1280	3749		- 1280	+ 02
STARK	3994		- 1525	3992		- 1523	- 01
BASE/ KC	4052		- 1583	4052		- 1583	- 01
FT. SCOTT	4250		- 1781	4248		- 1779	- 03
CHEROKEE	4278		- 1809	4278		- 1809	- 03
MISSISSIPPI	4337		- 1868	4337		- 1868	- 03

REFERENCE WELL FOR STRUCTURAL COMPARISON :

MULL DRILLING CO. INC. # 1-25 STEFFENS SEC.25 - T 15 S - R 27 W GOVE COUNTY KANSAS



MUD CHECK @ 3650
 VIS: 47
 WT: 8.8

MUD CHECK @ 3750
 VIS: 47
 WT: 8.9

MUD CHECK @ 3850
 VIS: 46
 WT: 9.0

MUD CHECK @ 3950
 VIS: 49
 WT: 9.0

MUD CHECK @ 4050
 VIS: 49
 WT: 9.1

MUD CHECK @ 4150
 VIS: 50
 WT: 9.0

MUD CHECK @ 4250
 VIS: 52
 WT: 9.2

MUD CHECK @ 4350
 VIS: 54
 WT: 9.2

DST # 1 (3930 - 3990)
 REC: 166' GOCM 22% O
 IFF: 19 - 29#
 ISIP: 737#
 FFP: 27 - 94#
 FSIP: 641#

DST # 2 (3985 - 4030)
 REC: 179' GOCMW 35% O
 IFF: 19 - 27#
 ISIP: 1034#
 FFP: 32 - 90#
 FSIP: 1013#

DST # 3 (4220 - 4270)
 REC: 2' MUD
 IFF: 16 - 18#
 ISIP: 77#
 FFP: 18 - 18#
 FSIP: 39#

DST # 4 (4265 - 4340)
 REC: 15' OCM 6% O
 IFF: 18 - 20#
 ISIP: 1212#
 FFP: 20 - 22#
 FSIP: 1188#

DST # 5 (4340 - 4350)
 REC: 240' CO
 30' SOGOWM 8% O
 IFF: 19 - 23#
 ISIP: 1260#
 FFP: 29 - 112#
 FSIP: 1230#

RTD = 4450 LTD = 4453

COMMENTS:

5 1/2" PRODUCTION CASING WAS SET TO
 FURTHER TEST THE PRODUCTIVITY OF THIS WELL

KEVIN L. KESSLER