

KEVIN L. KESSLER
CONSULTING PETROLEUM GEOLOGIST
 (316) 522-7338

OPERATOR : MULL DRILLING COMPANY INC.
LEASE : SIMPSON - MAST UNIT WELL # : 1 - 10
LOCATION : 80' FSL & 1193' FWL
SEC: 20 TWP : 16 S RGE : 23 W
COUNTY : NESS STATE : KANSAS

ELEVATION
KB : 2507
GL : 2502
 MEASUREMENTS FROM
KB

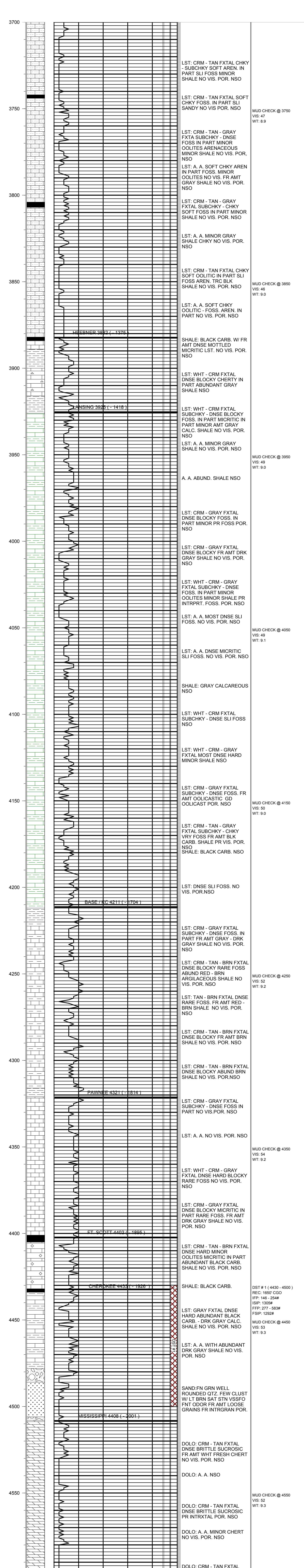
CONTRACTOR : W W DRILLING RIG # 10
COMM : 03 / 01 / 2012 **COMP : 03 / 07 / 2012**
RTD : 4600 **LOG TD : 4598**
SAMPLES SAVED FROM : 3700 **TO: RTD**
GEOLOGICAL SUPERVISION FROM : 3700 **TO : RTD**
MUD UP : 3600 **TYPE MUD : CHEMICAL**

CASING RECORD
SURFACE :
8 5/8" @ 233'
PRODUCTION :
5 1/2" @ 4600'

ELECTRICAL SURVEYS:
DIL
CNL / CDL
MICRO
SONIC

FORMATION	TOP	LOG	DATUM	TOP	SAMPLE	DATUM	STRUCT. COMP.
HEEBNER	3882		- 1375	3882		- 1375	+ 04
LANSING	3925		- 1418	3925		- 1418	+ 03
BASE / KC	4211		- 1704	4211		- 1704	+ 05
PAWNEE	4321		- 1814	4321		- 1814	+ 02
FORT SCOTT	4402		- 1895	4402		- 1895	+ 06
CHEROKEE	4433		- 1926	4433		- 1926	+ 03
MISSISSIPPI	4508		- 2001	4508		- 2001	+ 06

REFERENCE WELL FOR STRUCTURAL COMPARISON :
GRAND MESA # 1 - 29 DIETTERICH - MISHLER 29 - T 16 S - R 23 W NESS COUNTY KANSAS



COMMENTS:

**5 1/2" PRODUCTION CASING WAS SET TO FURTHER EVALUATE
 THE PRODUCTIVITY OF THIS WELL**

KEVIN L. KESSLER