



# TEMPORARY ABANDONMENT WELL APPLICATION

OPERATOR: License# \_\_\_\_\_  
 Name: \_\_\_\_\_  
 Address 1: \_\_\_\_\_  
 Address 2: \_\_\_\_\_  
 City: \_\_\_\_\_ State: \_\_\_\_\_ Zip: \_\_\_\_\_ + \_\_\_\_\_  
 Contact Person: \_\_\_\_\_  
 Phone: ( \_\_\_\_\_ ) \_\_\_\_\_  
 Contact Person Email: \_\_\_\_\_  
 Field Contact Person: \_\_\_\_\_  
 Field Contact Person Phone: ( \_\_\_\_\_ ) \_\_\_\_\_

API No. 15- \_\_\_\_\_  
 Spot Description: \_\_\_\_\_  
 \_\_\_\_\_ Sec. \_\_\_\_\_ Twp. \_\_\_\_\_ S. R. \_\_\_\_\_  E  W  
 \_\_\_\_\_ feet from  N /  S Line of Section  
 \_\_\_\_\_ feet from  E /  W Line of Section  
 GPS Location: Lat: \_\_\_\_\_, Long: \_\_\_\_\_  
 County: \_\_\_\_\_ (e.g. xx.xxxxx) (e.g. -xxx.xxxxx)  
 Lease Name: \_\_\_\_\_ Well #: \_\_\_\_\_  
 Elevation: \_\_\_\_\_  GL  KB  
 Well Type: (check one)  Oil  Gas  OG  WSW  Other: \_\_\_\_\_  
 SWD Permit #: \_\_\_\_\_  ENHR Permit #: \_\_\_\_\_  
 Gas Storage Permit #: \_\_\_\_\_  
 Spud Date: \_\_\_\_\_ Date Shut-In: \_\_\_\_\_

	Conductor	Surface	Production	Intermediate	Liner	Tubing
Size						
Setting Depth						
Amount of Cement						
Top of Cement						
Bottom of Cement						

Casing Fluid Level: \_\_\_\_\_ How Determined? \_\_\_\_\_ Date: \_\_\_\_\_  
 Casing Squeeze(s): \_\_\_\_\_ to \_\_\_\_\_ w / \_\_\_\_\_ sacks of cement, \_\_\_\_\_ to \_\_\_\_\_ w / \_\_\_\_\_ sacks of cement. Date: \_\_\_\_\_  
 (top) (bottom) (top) (bottom)  
 Do you have a valid Oil & Gas Lease?  Yes  No  
 Depth and Type:  Junk in Hole at \_\_\_\_\_ (depth)  Tools in Hole at \_\_\_\_\_ (depth) Casing Leaks:  Yes  No Depth of casing leak(s): \_\_\_\_\_  
 Type Completion:  ALT. I  ALT. II Depth of:  DV Tool: \_\_\_\_\_ w / \_\_\_\_\_ sacks of cement  Port Collar: \_\_\_\_\_ w / \_\_\_\_\_ sack of cement  
 (depth) (depth)  
 Packer Type: \_\_\_\_\_ Size: \_\_\_\_\_ Inch Set at: \_\_\_\_\_ Feet  
 Total Depth: \_\_\_\_\_ Plug Back Depth: \_\_\_\_\_ Plug Back Method: \_\_\_\_\_

**Geological Data:**

Formation Name	Formation Top	Formation Base	Completion Information
1. _____	At: _____	to _____ Feet	Perforation Interval _____ to _____ Feet or Open Hole Interval _____ to _____ Feet
2. _____	At: _____	to _____ Feet	Perforation Interval _____ to _____ Feet or Open Hole Interval _____ to _____ Feet

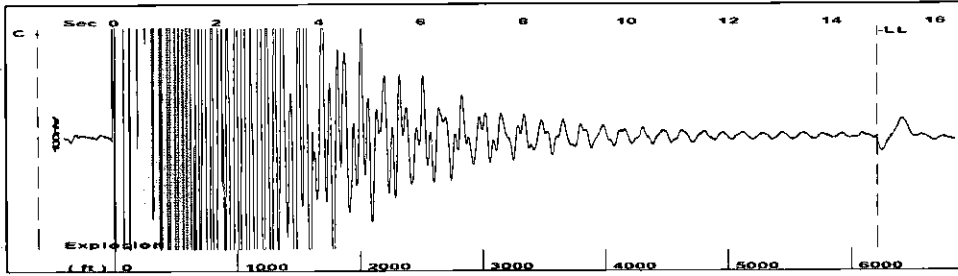
Submitted Electronically

<b>Do NOT Write in This Space - KCC USE ONLY</b>	Date Tested: _____	Results: _____	Date Plugged: _____	Date Repaired: _____	Date Put Back in Service: _____
	Review Completed by: _____	Comments: _____	TA Approved: Yes <input type="checkbox"/> Denied <input type="checkbox"/>		

**Mail to the Appropriate KCC Conservation Office:**

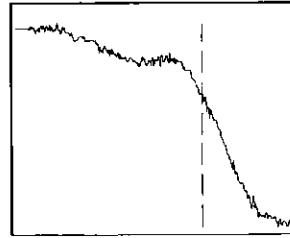
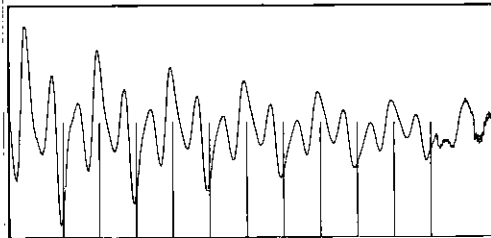
	KCC District Office #1 - 210 E. Frontview, Suite A, Dodge City, KS 67801	Phone 620.225.8888
	KCC District Office #2 - 3450 N. Rock Road, Building 600, Suite 601, Wichita, KS 67226	Phone 316.630.4000
	KCC District Office #3 - 1500 SW Seventh Steet, Chanute, KS 66720	Phone 620.432.2300
	KCC District Office #4 - 2301 E. 13th Street, Hays, KS 67601-2651	Phone 785.625.0550
	Underground Porosity Gas Storage (UPGS) 8200 E. 34th Street Circle N., Suite 1003, Wichita, KS 67226	Phone 316.734.4933

Group: Beat 5 (Liberal) Well: BOLES F-4 (acquired on: 05/17/12 13:21:10)



Filter Type High Pass Automatic Collar Count Yes Time 14.887 sec  
 Manual Acoustic Velo 834.211 ft/s Manual JTS/sec 13.1579 Joints 195.882 Jts  
 Depth 6209.45 ft

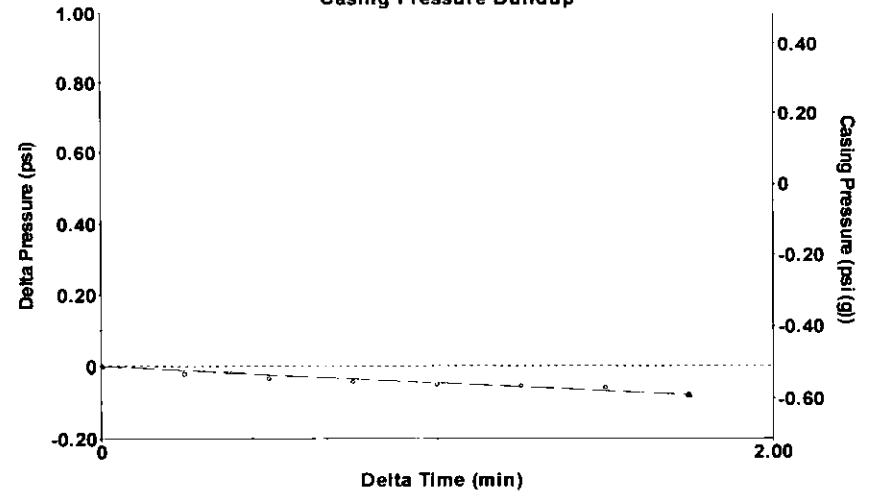
[ 0.5 to 1.5 (Sec) ]



Analysis Method: Manual

Group: Beat 5 (Liberal) Well: BOLES F-4 (acquired on: 05/17/12 13:21:10)

Casing Pressure Buildup



Change in Pressure -0.08 psi PT8150  
 Range 0 - ? psi  
 Change in Time 1.75 min

Group: Beat 5 (Liberal) Well: BOLES F-4 (acquired on: 05/17/12 13:21:10)

Production  
 Current Potential  
 Oil 0 0.0 BBL/D  
 Water 10 11.5 BBL/D  
 Gas 16.0 18.4 Mscf/D  
 IPR Method Vogel  
 PBHP/SBHP 0.30  
 Production Efficiency 87.0

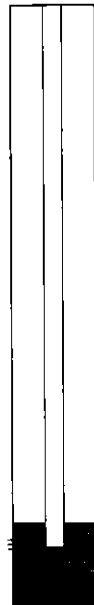
Oil 29 deg.API  
 Water 1.05 Sp.Gr.H2O  
 Gas 0.72 Sp.Gr.AIR

Acoustic Velocity 834.211 ft/s

Formation Submergence  
 Total Gaseous Liquid Column HT (TVD) 344 ft  
 Equivalent Gas Free Liquid HT (TVD) 344 ft

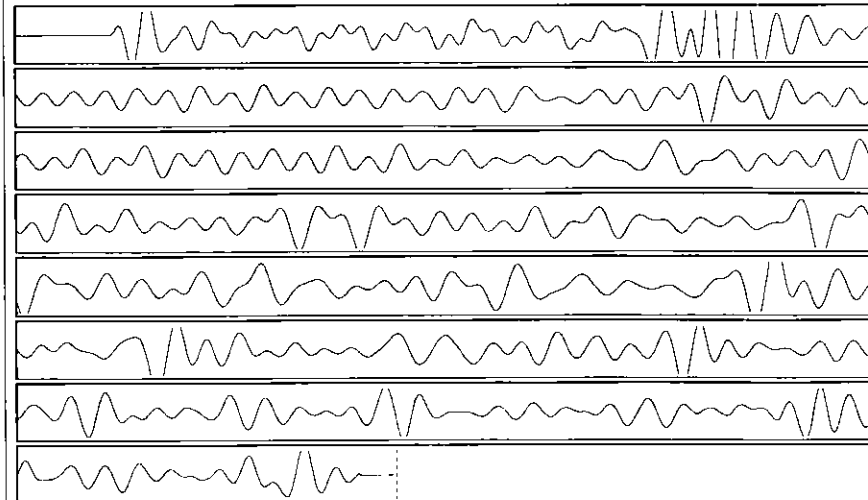
Acoustic Test

Casing Pressure -0.5 psi (g)  
 Casing Pressure Buildup -0.078 psi  
 1.75 min  
 Gas/Liquid Interface Pressure 1.8 psi (g)  
 Liquid Level Depth 6209.45 ft  
 Pump Intake Depth 6553.00 ft  
 Formation Depth 6509.00 ft



Producing  
 Annular Gas Flow 0 Mscf/D  
 % Liquid 100 %  
 Pump Intake 158.0 psi (g)  
 Producing BHP 138.0 psi (g)  
 Static BHP 500.0 psi (g)

Group: Beat 5 (Liberal) Well: BOLES F-4 (acquired on: 05/17/12 13:21:10)



Acoustic Velocity - \* - ft/s Joints counted 1  
 Joints Per Second - \* - jts/sec Joints to liquid level - \* -  
 Depth to liquid level - \* - ft Filter Width 11.1579 15.1579  
 Automatic Collar Count Yes Time to 1st Collar - \* - - \* -