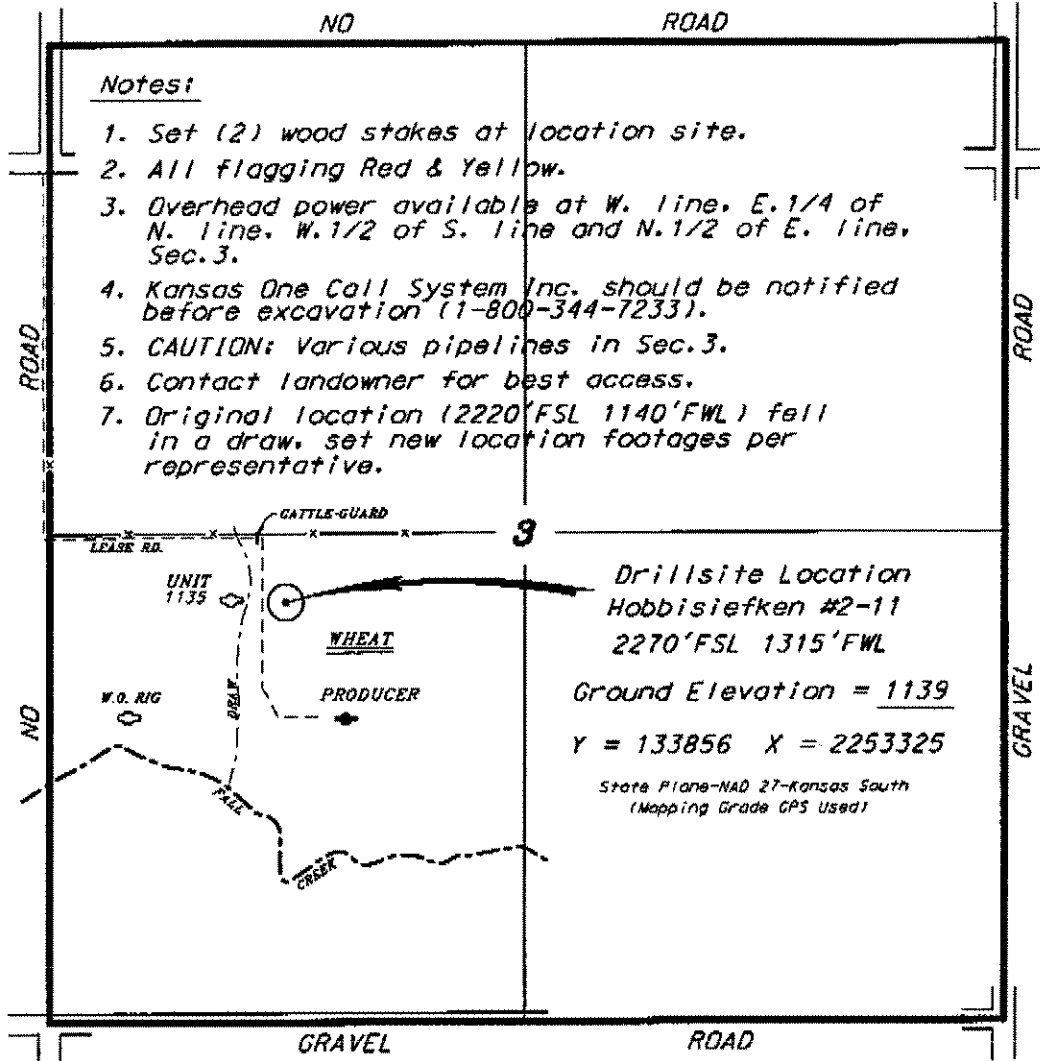


ATLAS OPERATING, LLC
 HOBBSIEFKEN LEASE
 SW.1/4, SECTION 3, T35S, R3W
 SUMNER COUNTY, KANSAS

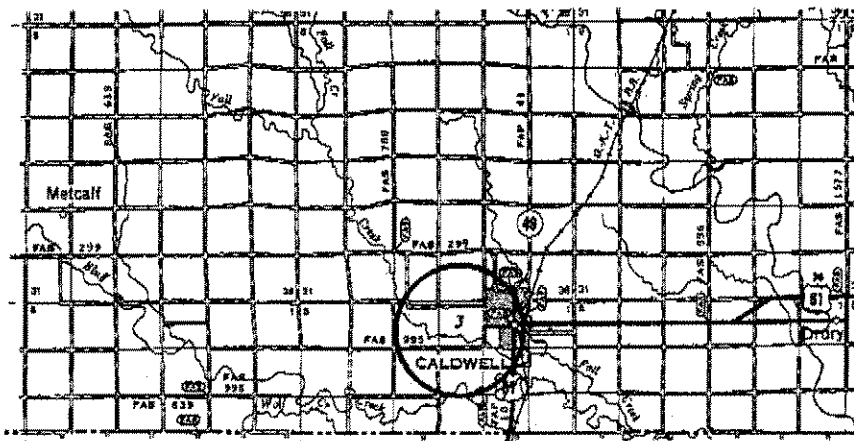
Notes:

1. Set (2) wood stakes at location site.
2. All flagging Red & Yellow.
3. Overhead power available at W. line, E. 1/4 of N. line, W. 1/2 of S. line and N. 1/2 of E. line, Sec. 3.
4. Kansas One Call System Inc. should be notified before excavation (1-800-344-7233).
5. CAUTION: Various pipelines in Sec. 3.
6. Contact landowner for best access.
7. Original location (2220'FSL 1140'FWL) fell in a draw, set new location footages per representative.

*Ingress and egress to location as shown on this plat is per usage only and may not be legally opened for public use. Contact landowner, tenant and county road department for access.



Drillsite Location
 Hobbisiefken #2-11
 2270'FSL 1315'FWL
 Ground Elevation = 1139
 Y = 133856 X = 2253325
 State Plane-NAD 27-Kansas South
 (Mapping Grade GPS Used)



• Controlling data is based upon the best maps and photographs available to us and upon a regular section of land containing 240 acres.
 • Approximate section lines were determined using the normal standard of care of oilfield surveyors practicing in the state of Kansas. The section corners, which establish the precise section lines, were not necessarily located, and the exact location of the drillsite location in the section is not guaranteed. Therefore, the operator securing this service and accepting this plat and all other parties relying thereon agree to hold Central Kansas Oilfield Services, Inc., its officers and employees harmless from all losses, costs and expenses and avoid written releases from any liability from incidental or consequential damages.
 • Elevations derived from National Geodetic Vertical Datum.

Date March 2, 2012

