

GEOLOGIST'S REPORT
DRILLING TIME AND SAMPLE LOG

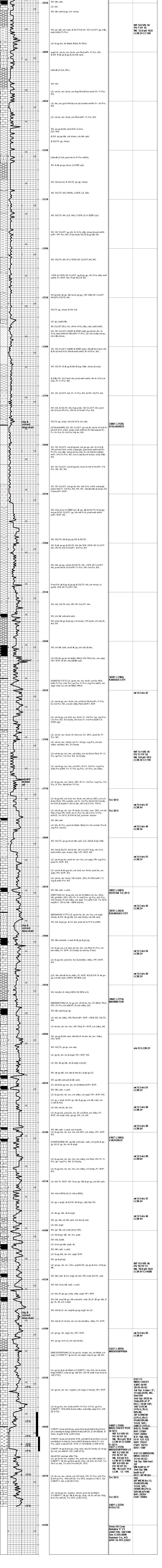
COMPANY VESS OIL CORPORATION LEASE NETAHLA 'C' #1 FIELD GERBERLING LOCATION 2640' FNL 330' FWL SECTION 5 TOWNSHIP 34S RANGE 04W COUNTY SUMNER STATE KANSAS		ELEVATIONS KB 1252' GL 1242' Measurements Are All From KB API 15-191-22637-00-00	
CONTRACTOR VAL ENERGY, INC. SPUD 02/24/2012 COMP 03/06/2012 RTD 4481' (-3229) LTD 4481' (-3229) LOG-TECH: CASERD HOLE GRN NO TOE LOGS		CASING SURFACE 2 1/2" 845/8" 24# RT LS CSG, Set @ 290' w/225 1x Class A PRODUCTION 106 Jts 5412' 158' ft J-55 csg set @ 4480'	

FORMATION TOPS	LOG	SAMPLES	CHRONOLOGY
ELGIN	NP	NP	
OREAD	2903' (1852)	2903' (1651)	02/23/2012: MRU VAL ENERGY DRIL #2 SPUD MOUSEHOLE @ 6:45 PM, RIG RATHOLE
HEEBNER	2939' (1892)	2939' (1687)	02/24/2012: SPUD 12 1/4" HOLE @ 4:30 AM, TD @ 2907 @ 2:30 PM, SHS 1 1/4" I.D.E.O. RUN 7 JTS @ 2:45 PM, 24# RT LS CASING, TALLY = 276' SET @ 2907 KB, CONSOLIDATED CEMENTED W/225 SX CLASS A 2 1/2" I.D. 3" CC, CIRC. 17 BBL TO PIT, PLUS DOWN @ 8:16 PM.
STALNAKER	3409' (2148)	3389' (2128)	02/26/2012: DRLO @ 3:00 @ 7 AM 02/27/2012: DRLO @ 2:10 @ 7 AM 02/28/2012: DRLO @ 2:26 @ 7 AM DISPLACED MUD, MW @ 9.5 VLS 41
LAYTON	NP	NP	
KANSAS CITY	3639' (2386)	3639' (2386)	02/28/2012: DRLO @ 3:00 @ 7 AM 02/26/2012: DRLO @ 3:00 @ 7 AM
HERTHA	3859' (2803)	3859' (2803)	02/27/2012: DRLO @ 2:10 @ 7 AM 02/28/2012: DRLO @ 2:26 @ 7 AM
BKANSAS CITY	3876' (2823)	3876' (2824)	02/28/2012: DRLO @ 2:26 @ 7 AM DISPLACED MUD, MW @ 9.5 VLS 41
MARMATON	3966' (2716)	3966' (2714)	VIS 41, WL 12, LCM 2#, CL 9200 03/01/2012: DRLO @ 2:35 @ 7 AM
CHEROKEE	4107' (2856)	4107' (2856)	VIS 55, WL 10, LCM 2#, CL 9200
MISSISSIPPIAN	4322' (3070)	4322' (3070)	03/03/2012: CIRC @ 4:40 FOR DST #2, 03/04/2012: DOWN FOR REPAIRS @ 4:42 03/05/2012: DOWN FOR REPAIRS @ 4:42
MISS CHERT POROSITY	4400' (3148)	4400' (3148)	FIXED BY 3:00 PM RECOND. MUD, CL 50K 03/06/2012: TD @ 4481' @ 8:30 AM
BMISS POR	4429' (3174)	4422' (3176)	MW @ 9.5 VLS 46, CL 10K, CIRC ON BOTTOM, SHORT TRIP 7 STANDS, CIRC BEFORE LAY DOWN.
MISS LIME	4429' (3174)	4422' (3176)	
RIDLTD	4481' (3229)	4481' (3229)	

REMARKS:

BAN 106 JTS 5412' OD 16.56 FT L66 NEW CASING (TALLY= 4882.24)
 PLUS FLOAT SHOE = 100' TOTAL 4982.24, SET @ 4480' LB, STOP AND
 CIRCULATE MUD @ 5:15 ON WAY IN HOLE, WASH IT TO BOTTOM, CIRC
 FOR 20 MINUTES, HOOK UP ROTATING HEAD, CIRC AND ROTATE
 15 MINUTES, LOST CIRCULATION, PUMP MUD, BASIC MIX AND PUMP 500 GAL
 MUD FLASH PUMP 20 SX FROM MIX AS SCAVENGER, PLS 5X AA, NO
 CIRCULATION, DISPLACE @ 8 BPM, CAUGHT PRESSURE @ 90 BBL, LIFT
 PRESSURE TO 2000, LAND @ 1000 @ 12:35 AM, 03/07/2012
 RELEASES LT HEAD, SET SLIP AND CUT OFF CASING, PLUS RATHOLE
 20 SX, MOUSEHOLE 16 SX

Respectfully submitted,
 Roger L. Martin, Geologist (Wellsite)



VAL ENERGY, INC.
NETAHLA 'C' #1
2640' FNL 330' FWL
Sumner Co., KS
API# 15-191-22637