



James C. Musgrove
Petroleum Geologist

Office
(620) 588-4250

212 Main St. • P.O. Box 215 • Claflin, KS 67525

Home
(620) 587-3444

GEOLOGIST'S REPORT

DRILLING TIME AND SAMPLE LOG

COMPANY <u>Blue Ridge Petroleum</u>	ELEVATIONS
LEASE <u>Antenen #2-12</u>	KB <u>2510</u>
FIELD <u>WCV NORTH</u>	DF _____
LOCATION <u>SW-SW-NW-NE (1030' FNL 2580' FEL)</u>	GL <u>2500</u>
SEC <u>12</u> TWP <u>19S</u> RGE <u>26W</u>	Measurements Are All From <u>-KB-</u>
COUNTY <u>NESS</u> STATE <u>Kansas</u>	
CONTRACTOR <u>Southwind Drilling Co.</u>	CASING
SPUD <u>2-20-2012</u> COMP <u>2-28-2012</u>	SURFACE <u>8 5/8" @ 219'</u>
RTD <u>4550</u> LTD <u>4550</u>	PRODUCTION <u>5 1/2" @ 4549'</u>
MUD UP <u>3600</u> TYPE MUD <u>Chemical displaced</u>	ELECTRICAL SURVEYS
	By <u>Superior Well Services</u>
	<u>DIL, CDL/CVL, MEL, Son-</u>
SAMPLES SAVED FROM <u>3600</u> TO _____	
DRILLING TIME KEPT FROM <u>3600</u> TO _____	
SAMPLES EXAMINED FROM <u>3700</u> TO _____	
GEOLOGICAL SUPERVISION FROM <u>3850</u> TO _____	
GEOLOGIST ON WELL <u>Jim Musgrove</u>	

FORMATION TOPS	LOG	SAMPLES			
anhydrite	1777 + 733	Mississippian 4468	-	1958	
Base anhydrite	1812	Miss			
Heebner	3808 - 1258	Dolomite 4474	-	1964	
Toronto	3827 - 1317	RTD 4550	-	2040	
Wansing	3850 - 1340	RTD 4550	-		
Stark Sh.	4098 - 1588				
Base Kansas City	4195 - 1687				
Marmaton	4219 - 1709				
Pawnee	4304 - 1794				
E.T. Scott	4365 - 1855				
Cherokee Shale	4390 - 1880				

REMARKS

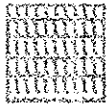
7505

5 1/2" production was set & cemented.

Respectfully submitted;

James C. Morrison
Petroleum Geologist

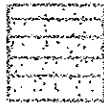
LEGEND



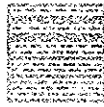
Anhydrite



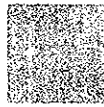
Salt



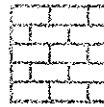
Sandstone



Shale



Carb sil



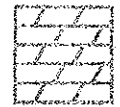
Limestone



Col. Lime



Chert



Dolomite

LOG 7792

LITHOLOGY

DEPTH

DRILLING TIME
(Logarithmic Scale)

.5 1 2 3 4 5 10 15 20 30

SAMPLE DESCRIPTIONS

REMARKS

20

40

60

80

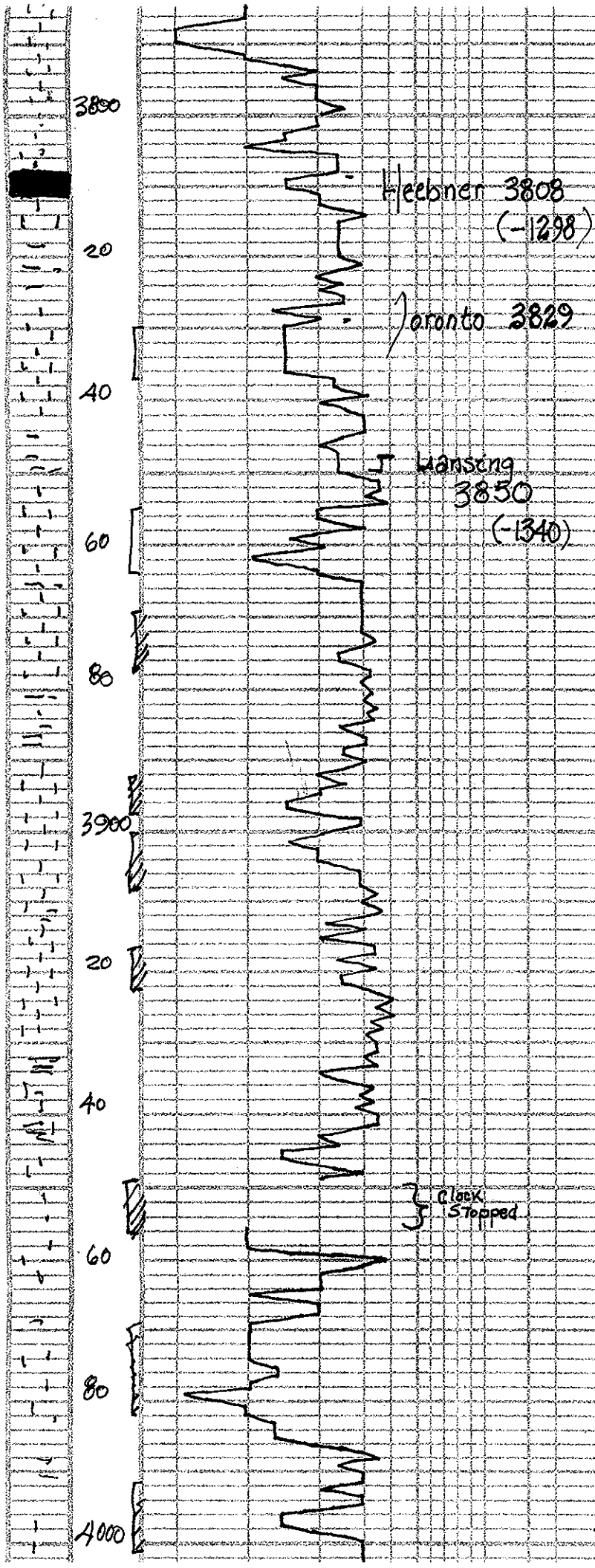
3800

~ ls; grey; wh; foss; green
scat g' + loose fossil
fragments n/s

ls; tan; foss; chky + tan
gm; gran ls; scat g'

aa; few slaty dolomite??

Ar. ara 1



few slightly dolomitic??

Jr. gry Δ

blk carb sh.

2510 KB -

LS, wh, few foss, cherty
+ wh/gry Darcy Δ

Jr. litogeom cherty LS??

LS, tan, (xh) few foss,
poor of + tan-gry Δ

LS, gry-tan, few Δy
(dense)

LS, tan, yellow (??) ool,
dense, poor vis o, n/s

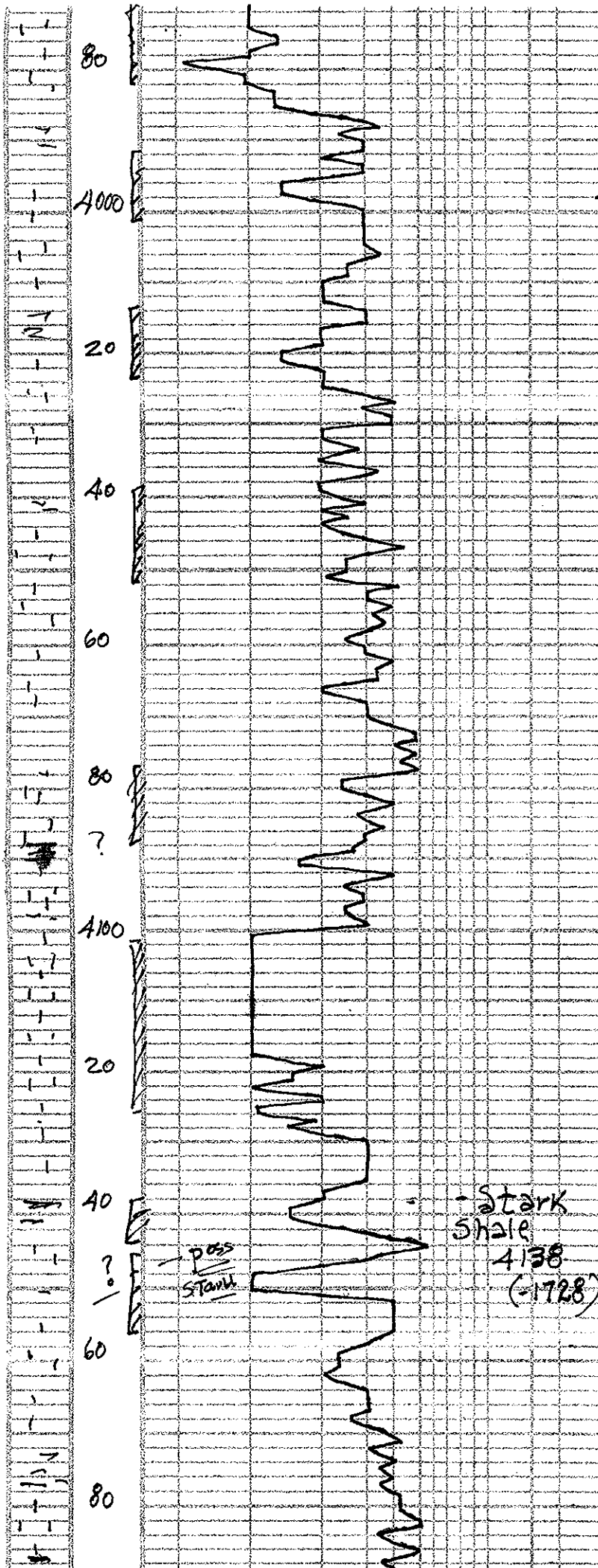
LS, wh/gry - cherty
dense, poor vis o,

blk carb sh.

LS, wh/gry, foss, cherty
+ gry wh Δ

LS, wh/gry, finely com
fr. com, cherty n/s

LS, wh/gry, foss, ool,
cherty poor vis o



ls, wh, gry, finely com,
fr. com, Chiky, vis

ls, wh, gry, (foss/ool)
Chiky, poor vis. o
fr. wh Δ

fr. blk sh

ls,

ls, wh, tan, f. red xly, foss,
spang calcite cement
+ gry / oolite Δ

ls, few ool. ? ?? gry sh
xly, no ool

} }

ls, wh, gry, few Chiky
+ wh, tan, ool; opaque Δ

ls, gry, wh, highly ool, oom
good g
+ shug wh. chik

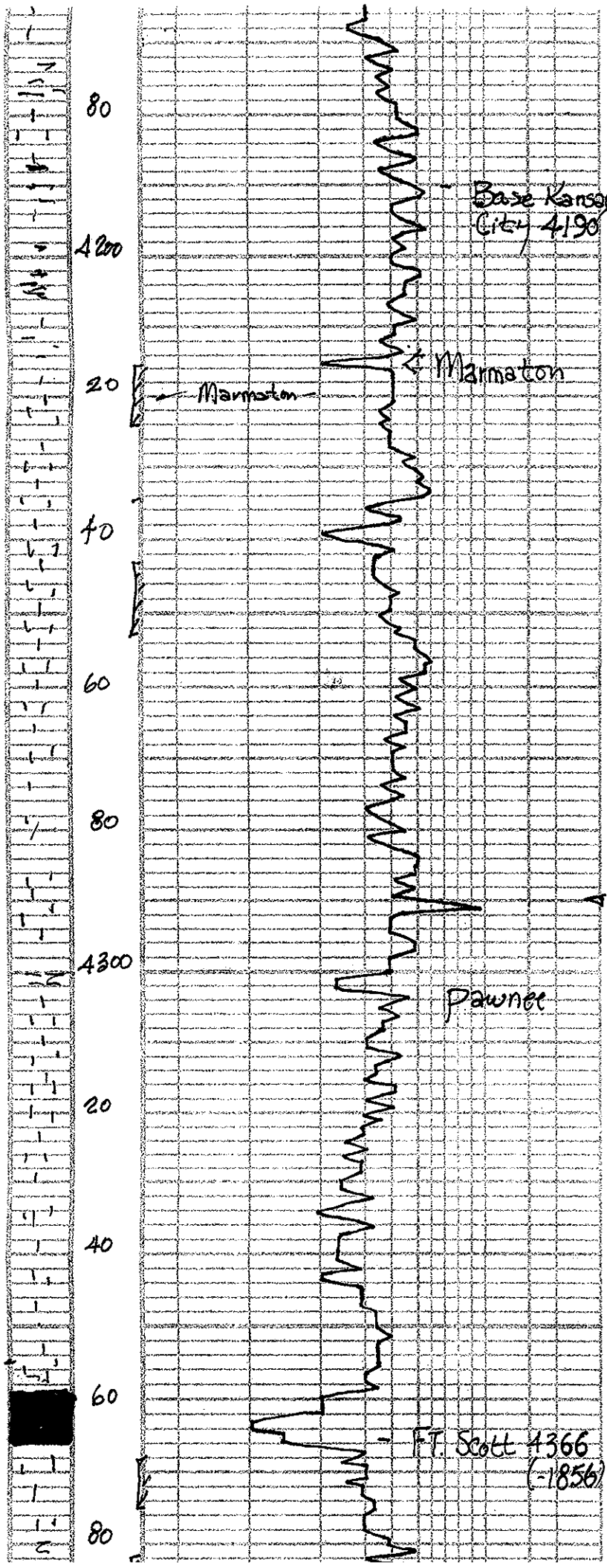
} }

blk carb sh.

ls, tan, brown, highly ool,
dense; few fr.

ls, tan, brown Δy (dense)

shug blk carb sh.



2- Slug blk carb sh.

~ grey/green sh.

ls, grey, wh/ tan, ool
cherty - A'y (dense)

~ blk carb sh. ?!

ls, wh/ grey, (foss ool), poor
cherty n/s

ls, wh/ grey - cherty, ool, wh
part (dense)

ls, wh/ grey, cherty - dense

~ ls + grey/blk grey shaley
n/s

~ Slug black carb. sh.

ls, tan, brown, foss/ool
cherty n/s

