

**R 8 W T31S, R7W, 6th P.M.**

**SGOMI**

Well location, HOSTETLER 3107 #30-2H, located as shown in the SE 1/4 SW 1/4 of Section 30, T31S, R7W, 6th P.M., Harper County, Kansas.

**BASIS OF ELEVATION**

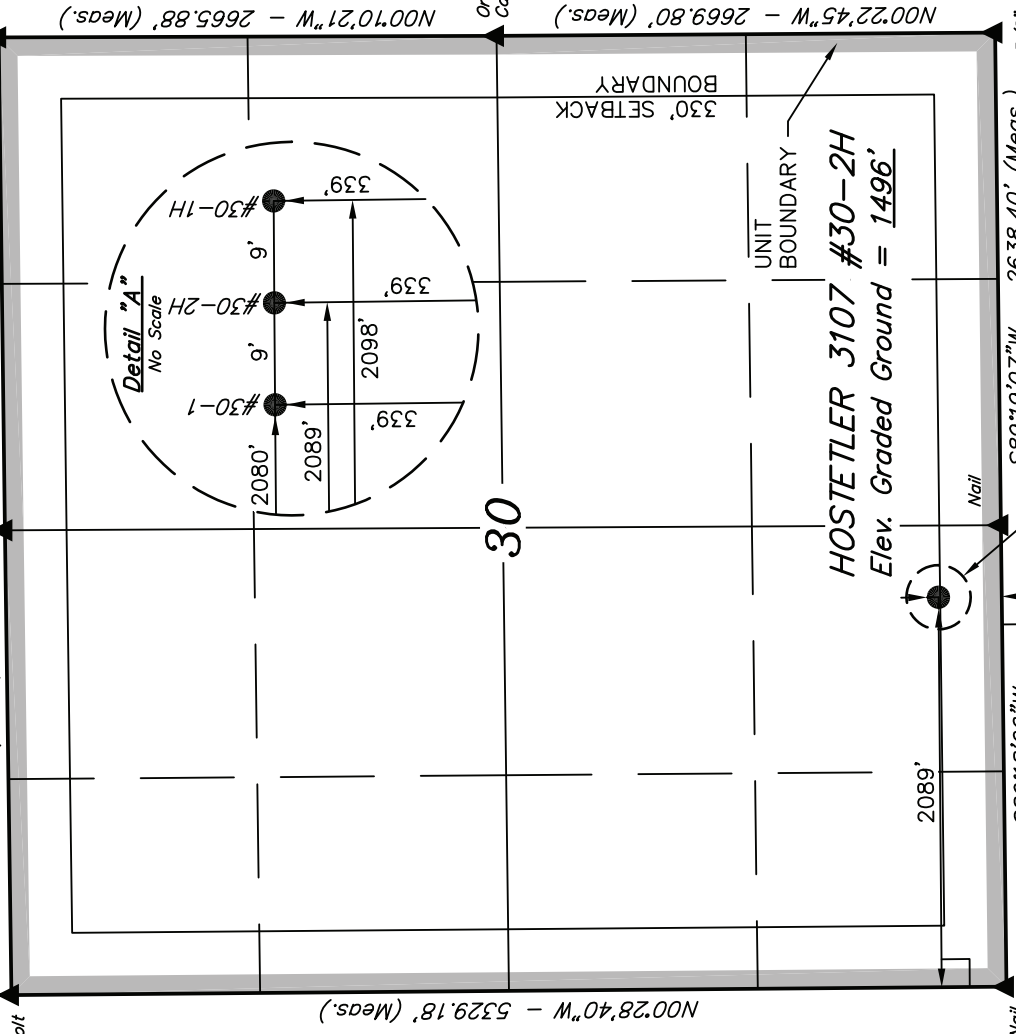
SPOT ELEVATION LOCATED AT THE NORTHEAST CORNER OF SECTION 22, T33S, R7W, 6th P.M. TAKEN FROM THE ANTHONY, QUADRANGLE, KANSAS, HARPER COUNTY, 7.5 MINUTE QUAD (TOPOGRAPHIC MAP) PUBLISHED BY THE UNITED STATES DEPARTMENT OF THE INTERIOR, GEOLOGICAL SURVEY. SAID ELEVATION IS MARKED AS BEING 1348 FEET.

**BASIS OF BEARINGS**

BASIS OF BEARINGS IS A G.P.S. OBSERVATION.

5/8" Bolt N00°28'40"W - 5329.18' (Meas.)

Orange Plastic Cap S89°12'34"W 2489.19' (Meas.) S89°16'01"W - 2640.57' (Meas.) 1/2" Rebar



Orange Plastic Cap

30

**HOSTETLER 3107 #30-2H**  
Elev. Graded Ground = 1496'

**LEGEND:**

- = 90° SYMBOL
- = PROPOSED WELL HEAD.
- ▲ = SECTION CORNERS LOCATED.

5/8" Nail S89°18'06"W 2472.53' (Meas.)

5/8" Rebar S89°19'07"W - 2638.40' (Meas.)  
See Detail "A" @ Above Right

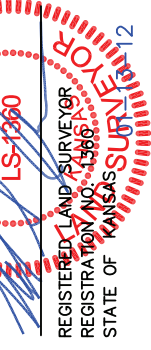
Orange Plastic Cap

N00°22'45"W - 2669.80' (Meas.)



**CERTIFICATE**

THIS IS TO CERTIFY THAT THE ABOVE PLAT WAS PREPARED FROM FIELD NOTES OF ACTUAL SURVEYS MADE BY ME OR UNDER MY SUPERVISION AND THAT THE SAME ARE TRUE AND CORRECT TO THE BEST OF MY KNOWLEDGE AND BELIEF.



REVISED: 01-13-12

<b>UNTAH ENGINEERING &amp; LAND SURVEYING</b>	
85 SOUTH 200 EAST - VERNAL, UTAH 84078 (435) 789-1017	
SCALE 1" = 1000'	DATE SURVEYED: 11-09-11
PARTY L.S. K.H. C.C.	DATE DRAWN: 12-14-11
WEATHER COOL	REFERENCES G.L.O. PLAT
	FILE SGOMI